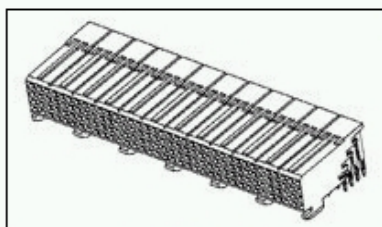
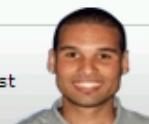


5536507-4 Product Details

Have a Question?

Chat with a Product Information Specialist



5536507-4

TE Internal Number: 5536507-4

Active

2mm Centerline Futurebus+ Connectors

Always EU RoHS/ELV Compliant (Statement of Compliance)

Product Highlights:

- Module Type = Signal
- 192 Signal Positions
- Connector
- Housing
- Free-Board Application

[View all Features](#)

Quick Links

- ▶ [Check Pricing & Availability](#)
- ▶ [Search for Tooling](#)
- ▶ [View Mating Products \(10\)](#)
- ▶ [Product Feature Selector](#)
- ▶ [Contact Us About This Product](#)

[Add to My Part List](#) [Request Sample](#) [Find Similar Products](#) [Buy Product](#)

Documentation & Additional Information

Documents are temporarily unavailable. We are working hard to correct the problem. Please try again later.

Additional Information:

- [Product Line Information](#)

Additional Product Images:

- [Line Drawing](#)

Related Products:

- [Tooling](#)
- [Mating Products \(10\)](#)

Product Features (Please use the Product Drawing for all design activity)

Product Type Features:

- [Product Type](#) = Connector
- [Connector Type](#) = Housing
- [PCB Mount Angle](#) = Right Angle
- [Post Type](#) = Solder Post

Mechanical Attachment:

- [Module Type](#) = Signal

Electrical Characteristics:

- [Voltage Rating \(VAC\)](#) = 30

Termination Related Features:

- [Termination Post Length \(mm \[in\]\)](#) = 2.73 [0.107]

Body Related Features:

- [Number of Signal Positions](#) = 192
- [Sequencing](#) = No
- [Number of Rows](#) = 4
- [Post Plating](#) = Tin
- [Centerline, Matrix \(mm \[in\]\)](#) = 2.00 x 2.00 [.079 x .079]

Contact Related Features:

- [Contact Gender](#) = Receptacle
- [Contact Base Material](#) = Phosphor Bronze
- [Contact Plating, Mating Area, Material](#) = Gold (30)

Housing Related Features:

- [Housing Gender](#) = Receptacle
- [Housing Material](#) = Liquid Crystal Polymer (LCP)

Industry Standards:

- [RoHS/ELV Compliance](#) = RoHS compliant, ELV compliant
- [Lead Free Solder Processes](#) = Wave solder capable to 240°C, Wave solder capable to 260°C, Wave solder capable to 265°C, Reflow solder capable to 245°C, Reflow solder capable to 260°C, Pin-in-Paste capable to 245°C, Pin-in-Paste capable to 260°C
- [RoHS/ELV Compliance History](#) = Always was RoHS compliant

Conditions for Usage:

- [Applies To](#) = Printed Circuit Board

Operation/Application:

- [Application](#) = Free-Board

Other:

- [Brand](#) = AMP

BOOKMARK

Corporate Information

[Who We Are](#)
[Investors](#)
[News Room](#)
[Supplier Portal](#)
[Careers](#)

Quick Links

[Check Distributor Inventory](#)
[Cross Reference](#)
[Find Documents & Drawings](#)
[Product Compliance Support Center](#)
[Site Map](#)

Customer Support

[Email or Chat with Us](#)
[Find a Phone Number](#)
[Search Knowledge Base](#)
[Manage Your Account](#)

Sign up for our eNewsletter

Enter your email address

Follow us on: