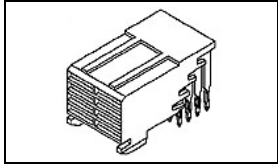


## 5536607-1 Product Details



**5536607-1**

TE Internal Number: 5536607-1



Active

### 2mm Centerline Futurebus+ Connectors

 Always EU RoHS/ELV Compliant (Statement of Compliance)

#### Product Highlights:

- Module Type = Power
- 8 Power Positions
- Connector
- Connector Assembly
- Free-Board Application

### Documentation & Additional Information

#### Product Drawings:

- [Z-PACK 2mm FB, POWER MODULE, RCPT. ASS'Y. 4 ROW, 2.7...](#) (PDF, English)

#### Catalog Pages/Data Sheets:

- [POWER\\_CONNECTORS\\_CATALOG\\_SEC01\\_BOARD\\_TO\\_BOARD](#) (PDF, English)

#### Product Specifications:

- None Available

#### Application Specifications:

- None Available

#### Instruction Sheets:

- None Available

#### CAD Files: (CAD Format & Compression Information)

- [2D Drawing](#) (DXF, Version A)
- [3D Model](#) (IGES, Version A)
- [3D Model](#) (STEP, Version A)

#### Additional Information:

- [Product Line Information](#)

#### Related Products:

- [Tooling](#)

### Product Features (Please use the Product Drawing for all design activity)

#### Product Type Features:

- [Module Type](#) = Power
- [Product Type](#) = Connector
- [Connector Type](#) = Connector Assembly
- [PCB Mounting Orientation](#) = Right Angle
- [Post Type](#) = Solder Post

#### Electrical Characteristics:

- Voltage Rating (VAC) = 30

#### Termination Features:

- [Termination Post Length \(mm \[in\]\)](#) = 2.73 [0.107]

#### Body Features:

- [Sequencing](#) = No
- [Post Plating](#) = Tin

#### Contact Features:

- [Contact Type](#) = Socket
- [Contact Base Material](#) = Phosphor Bronze
- [Contact Plating, Mating Area, Material](#) = Gold, Gold or Gold Flash over Palladium Nickel

#### Housing Features:

- [Connector Style](#) = Receptacle
- [Centerline, Matrix \(mm \[in\]\)](#) = 2.00 x 2.00 [.079 x .079]
- [Housing Material](#) = Liquid Crystal Polymer (LCP)

#### Configuration Features:

- [Number of Power Positions](#) = 8
- [Number of Rows](#) = 4

#### Industry Standards:

- [RoHS/ELV Compliance](#) = RoHS compliant, ELV compliant
- [Lead Free Solder Processes](#) = Wave solder capable to 240°C, Wave solder capable to 260°C, Wave solder capable to 265°C, Reflow solder capable to 245°C, Reflow solder capable to 260°C, Pin-in-Paste capable to 245°C, Pin-in-Paste capable to 260°C
- [RoHS/ELV Compliance History](#) = Always was RoHS compliant

#### Conditions for Usage:

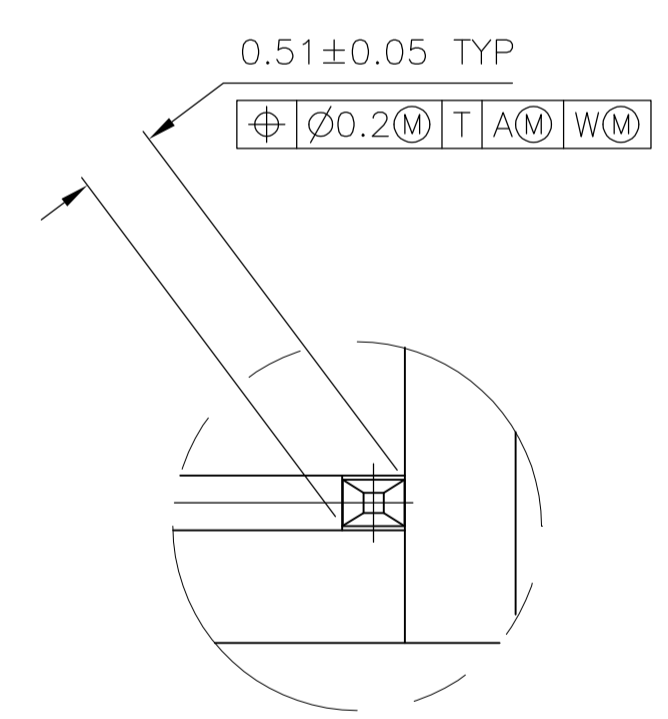
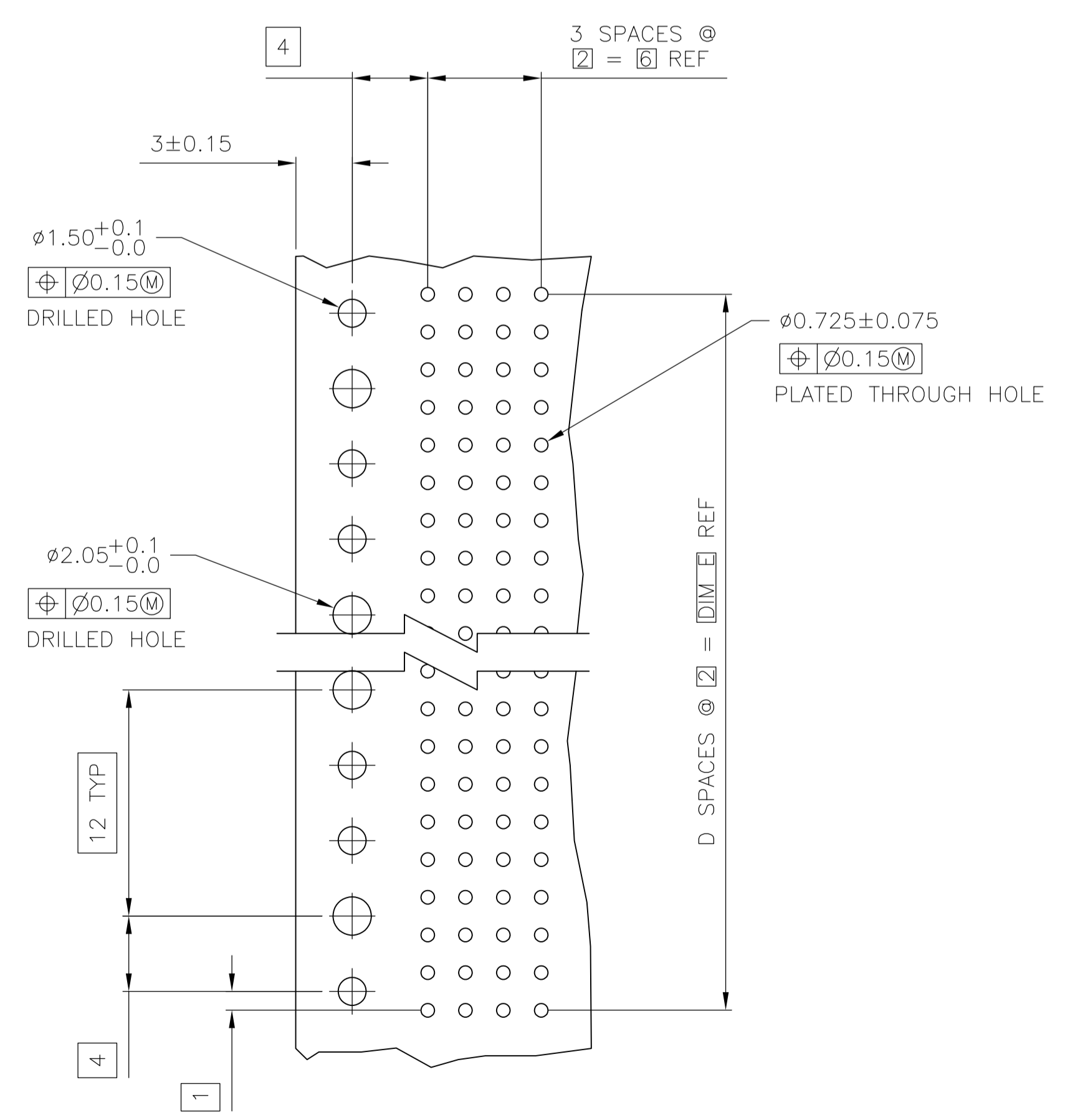
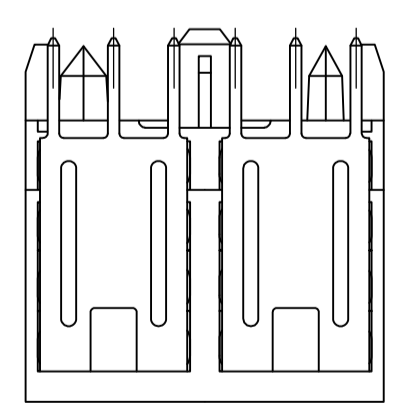
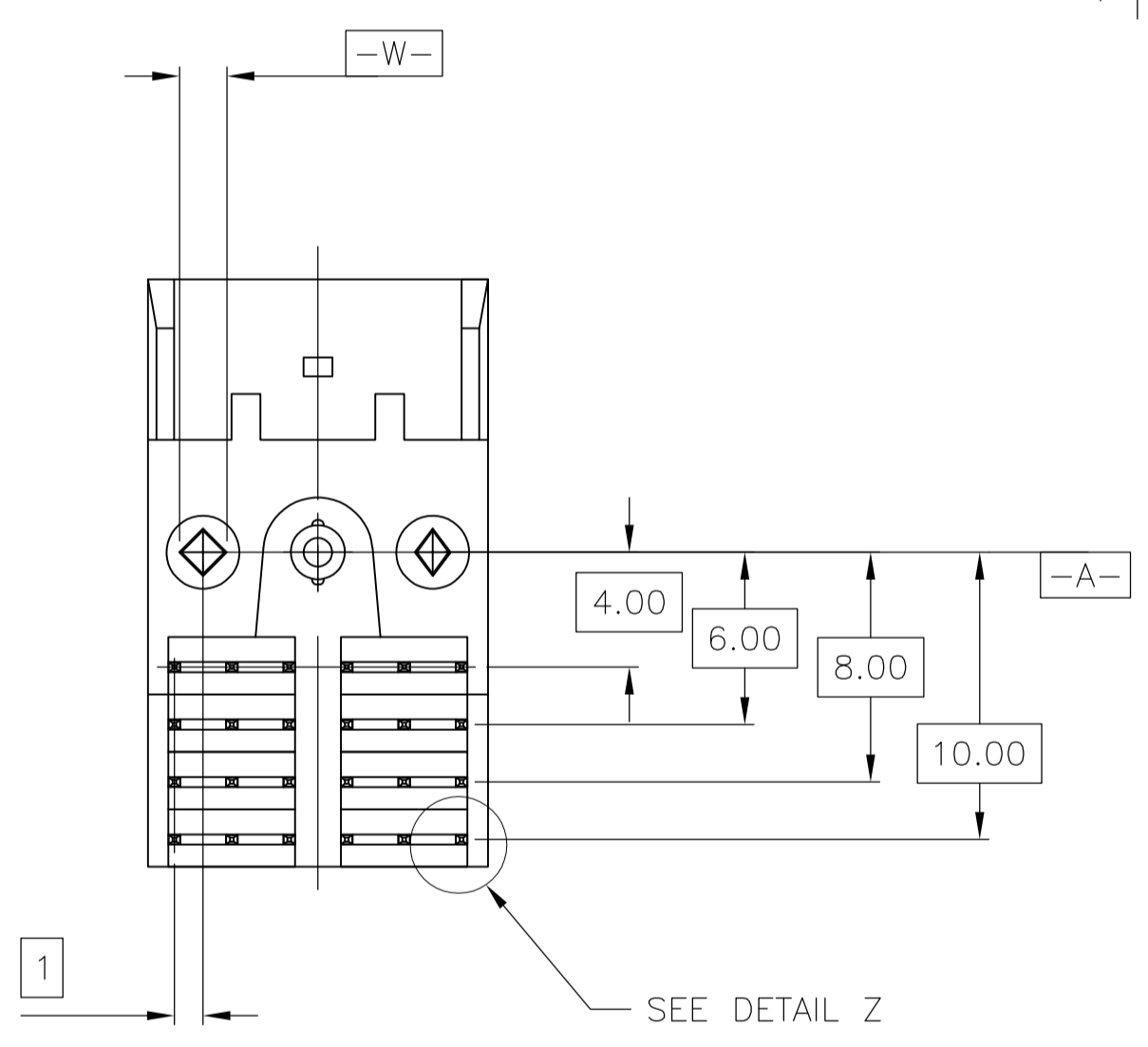
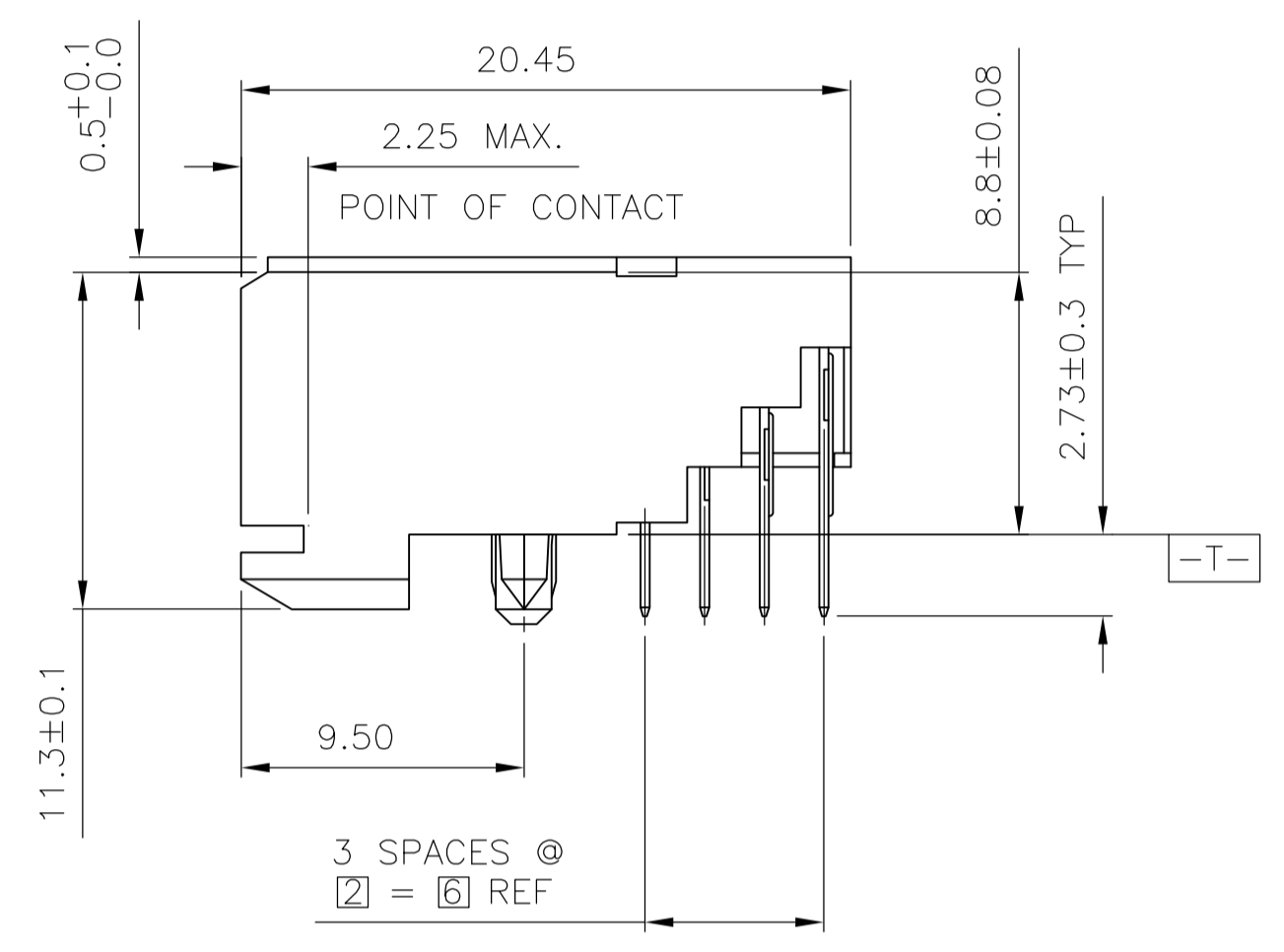
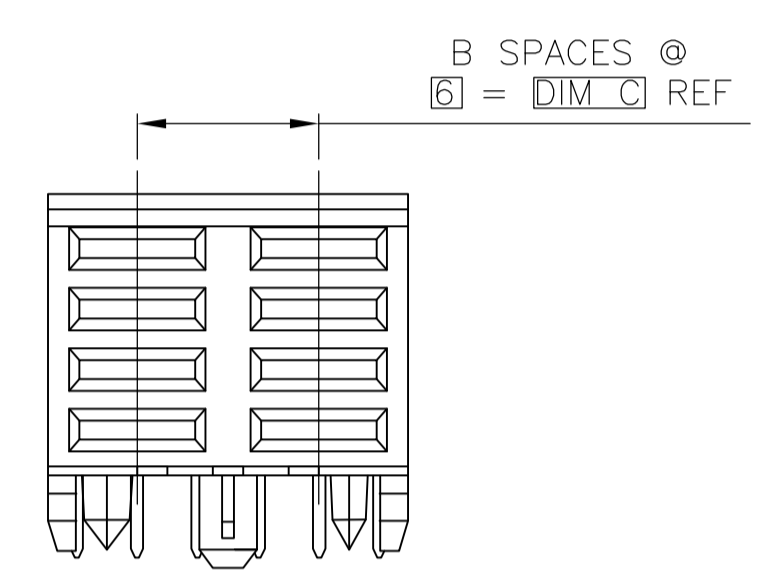
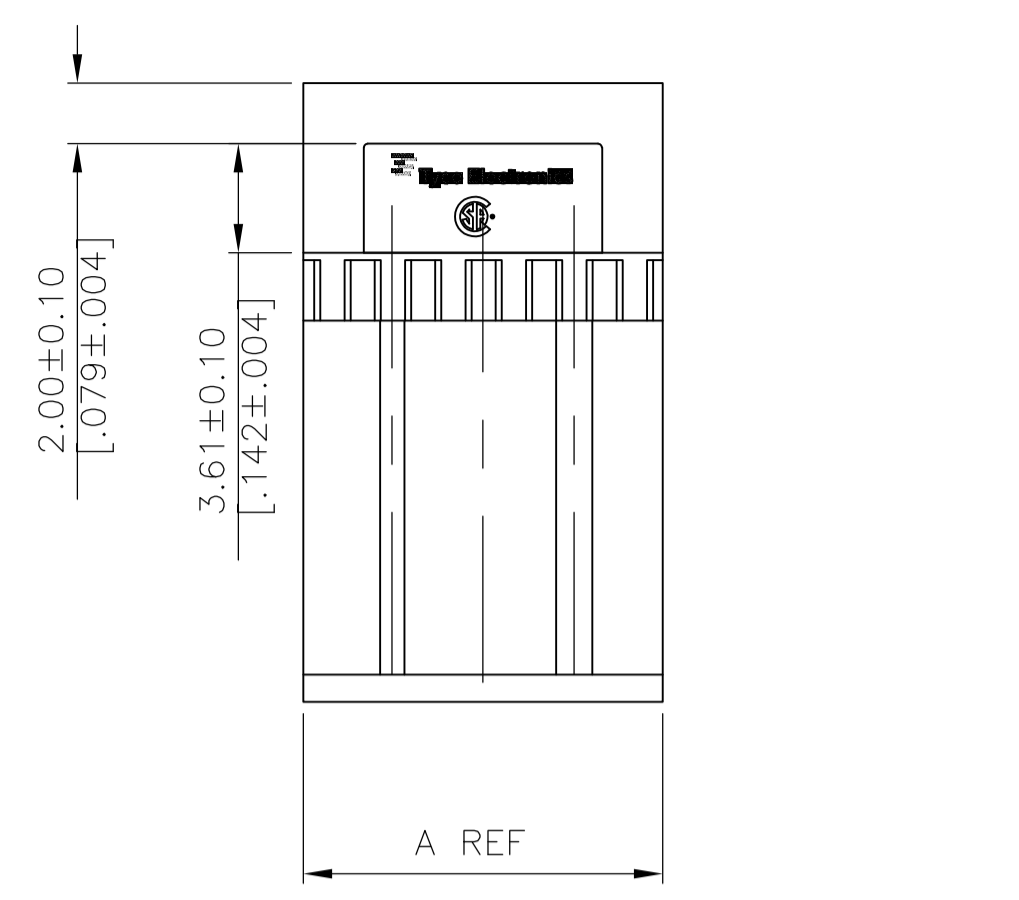
- [Applies To](#) = Printed Circuit Board

#### Operation/Application:

- [Application](#) = Free-Board

#### Other:

- [Brand](#) = AMP



DETAIL Z  
SCALE 20:1

RECOMMENDED CIRCUIT PATTERN  
PER IPC-D300 TYPE II, CLASS C  
(COMPONENT SIDE)

- 1 HOUSING MATERIAL: LIQUID CRYSTAL POLYMER.
- 2 CONTACT MATERIAL: PHOSPHOR-BRONZE.
- 3 CONTACT FINISH:(D)  
UNDERPLATE (ENTIRE CONTACT):  
0.00127 MIN NICKEL PER SAE-AMS-QQ-N-290  
ON MATING SURFACES:  
FLASH GOLD PER ASTM B 488, OVER  
0.00076 MIN PALLADIUM-NICKEL OVER UNDERPLATE, OR  
0.00076 MIN GOLD [ER ASTM B 488 OVER UNDERPLATE.  
ON LEADS:  
0.00381 MIN MATTE TIN PER ASTM B 545 OVER UNDERPLATE.  
LUBRICATION (MIN MATING SURFACES):  
SURFACE CONDITIONER AFTER PLATING.

10	5	6	1	11.88	3	8	5536607-1
E	D	C	B	A	FINISH	NO OF POSN	PART NUMBER
THIS DRAWING IS A CONTROLLED DOCUMENT.		D.R. BENDER 08/10/92		STE TE Connectivity			
DIMENSIONS: mm		TOLERANCES UNLESS OTHERWISE SPECIFIED:		NAME: Z-PACK 2mm FB, POWER MODULE, RCPT. ASS'Y. 4 ROW, 2.73 mm LEAD LENGTH			
0 PLC ± -		1 PLC ± -		PRODUCT SPEC			
1 PLC ± -		2 PLC ± .13		APPLICATION SPEC			
2 PLC ± -		3 PLC ± -		SIZE: A1			
3 PLC ± -		4 PLC ± -		CAGE CODE: 00779			
4 PLC ± -		ANGLES ± -		DRAWING NO: 5536607			
MATERIAL		FINISH		WEIGHT		RESTRICTED TO	
1		2		A1		CUSTOMER DRAWING	
3		SCALE: 4:1		SHEET 1 OF 1		REV A3	