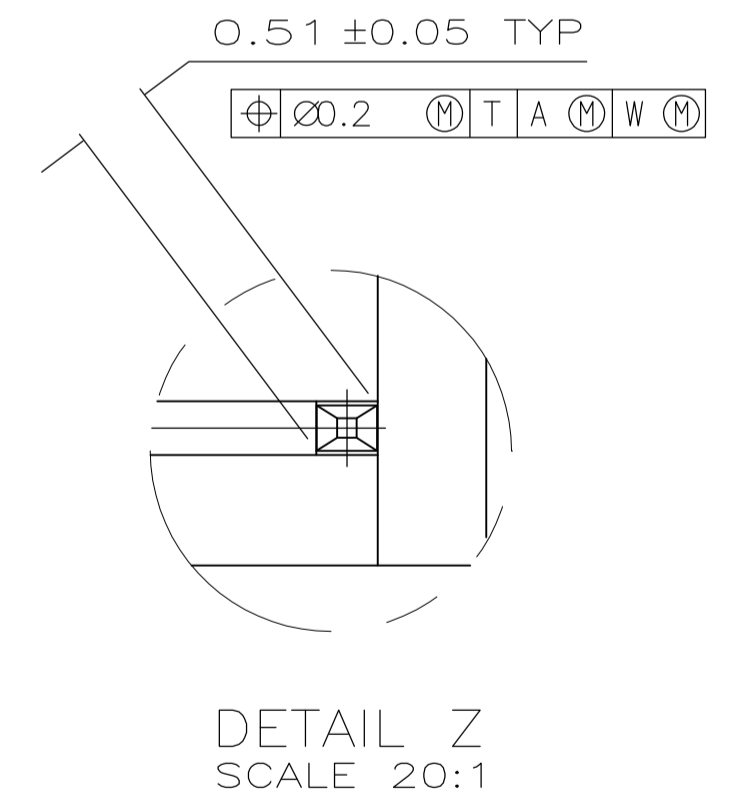


RECOMMENDED CIRCUIT PATTERN
 PER IPC-D300 TYPE II, CLASS C
 (COMPONENT SIDE)

- ① HOUSING MATERIAL: LIQUID CRYSTAL POLYMER.
- ② CONTACT MATERIAL: PHOSPHOR-BRONZE.
- ③ CONTACT FINISH:(D)
 UNDERPLATE (ENTIRE CONTACT):
 0.00127 MIN NICKEL PER SAE-AMS-QQ-N-290
 ON MATING SURFACES:
 FLASH GOLD PER ASTM B 488, OVER
 0.00076 MIN PALLADIUM-NICKEL OVER UNDERPLATE, OR
 0.00076 MIN GOLD PER ASTM B 488 OVER UNDERPLATE.
 ON LEADS:
 0.00381 MIN MATTE TIN PER ASTM B 545 OVER UNDERPLATE.
 LUBRICATION (MIN MATING SURFACES):
 SURFACE CONDITIONER AFTER PLATING.



10	5	6	1	11.88	③	8	5536607-1
E	D	C	B	A	FINISH	NO OF POSN	PART NUMBER
THIS DRAWING IS A CONTROLLED DOCUMENT.		DIN 08/10/92 D.R.BENDER		Tyco Electronics Corporation Harrisburg, PA 17105-3608			
DIMENSIONS: mm		TOLERANCES UNLESS OTHERWISE SPECIFIED:		Tyco Electronics Corporation			
0 PLC ± -		1 PLC ± -		NAME: Z-PACK 2mm FB, POWER MODULE, RCPT. ASSY.			
2 PLC ± .13		3 PLC ± .13		PRODUCT SPEC: -			
4 PLC ± -		ANGLES ± -		APPLICATION SPEC: -			
MATERIAL: ① ② ③		FINISH: ③		SIZE: A1		CAGE CODE: 00779	
CUSTOMER DRAWING		SCALE: 4:1		DRAWING NO: 5536607		RESTRICTED TO: -	
				SHEET 1 OF 1		REV A1	