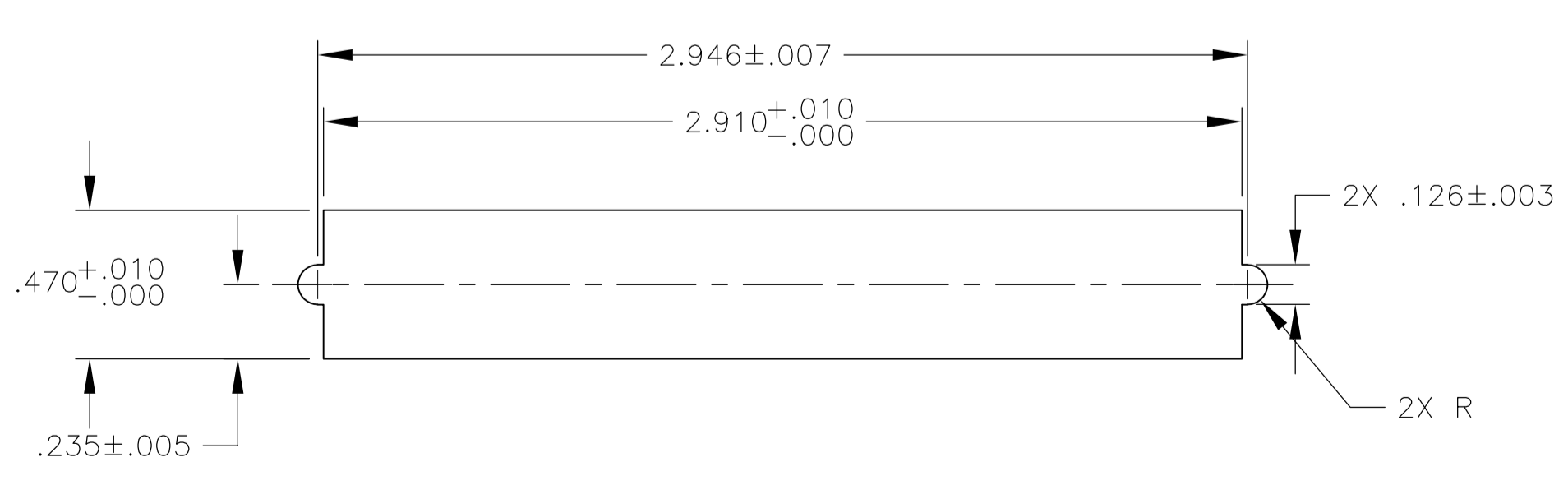
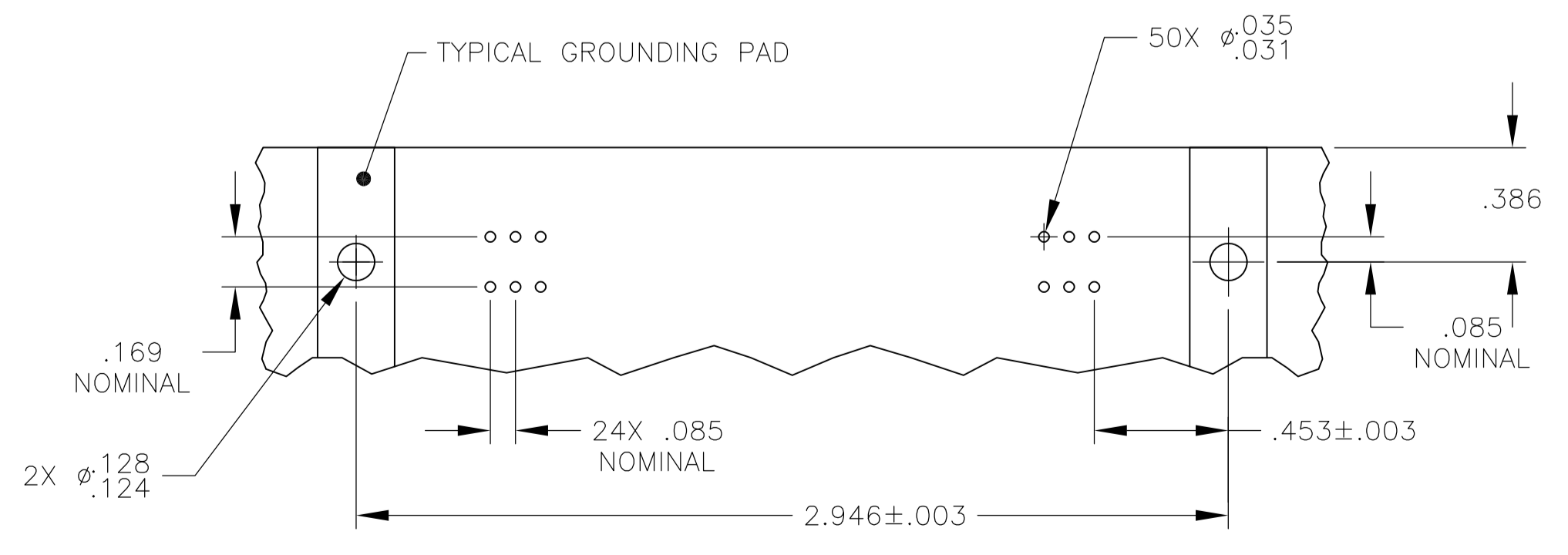
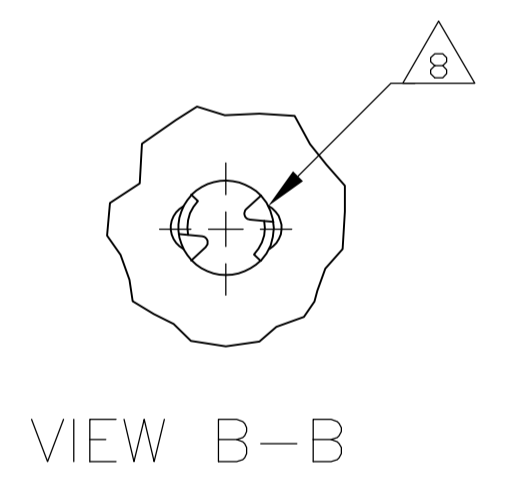
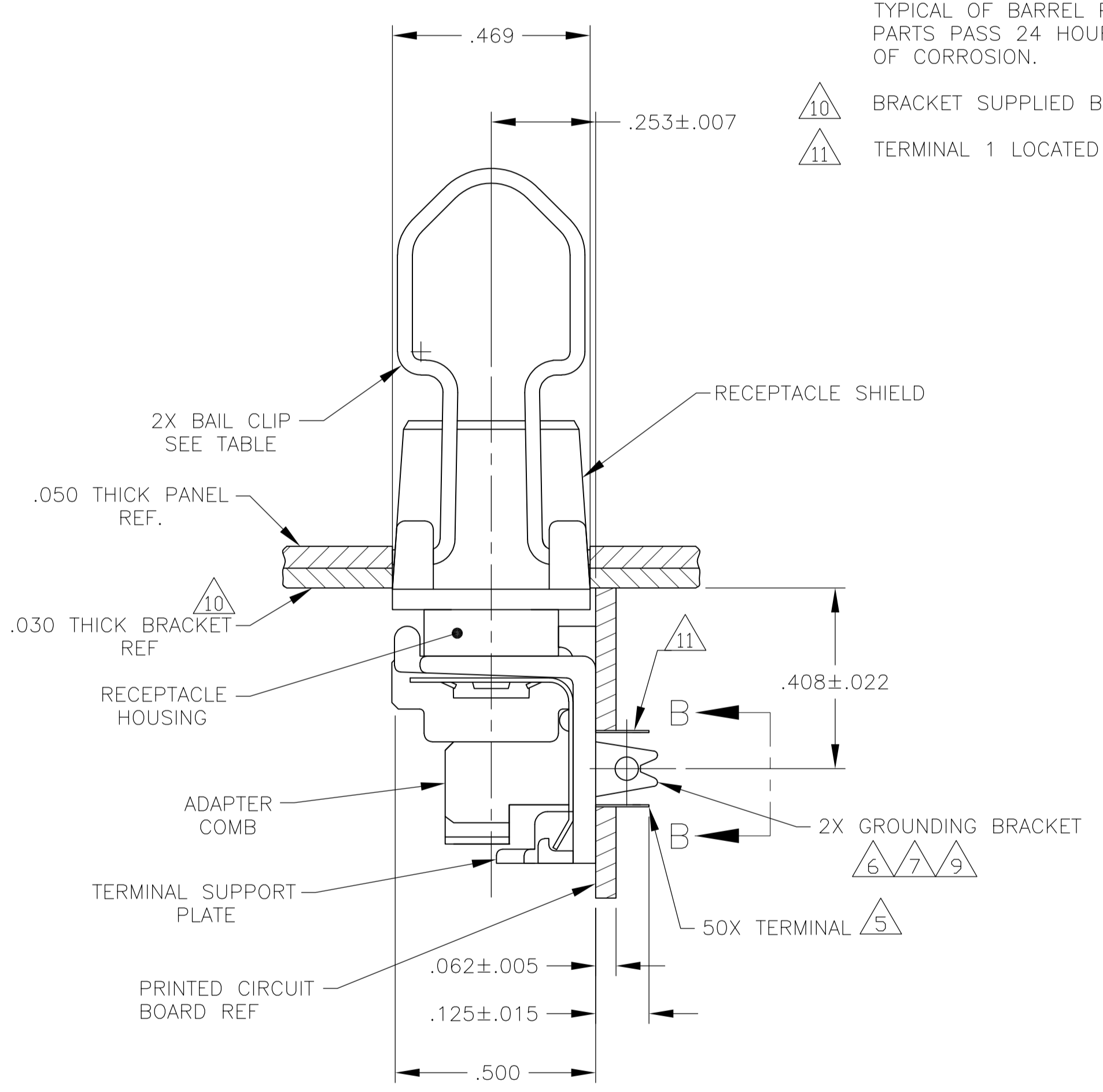
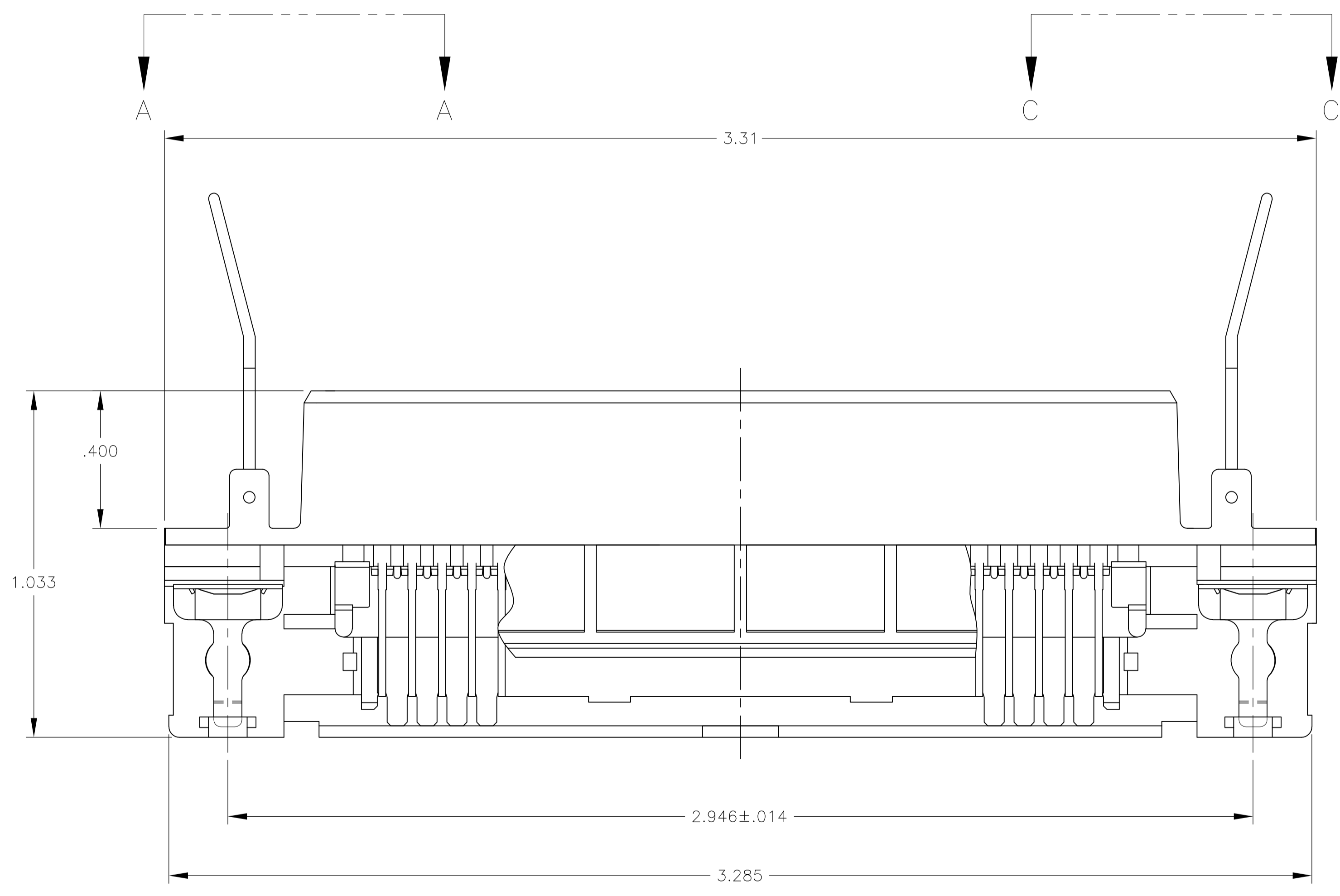
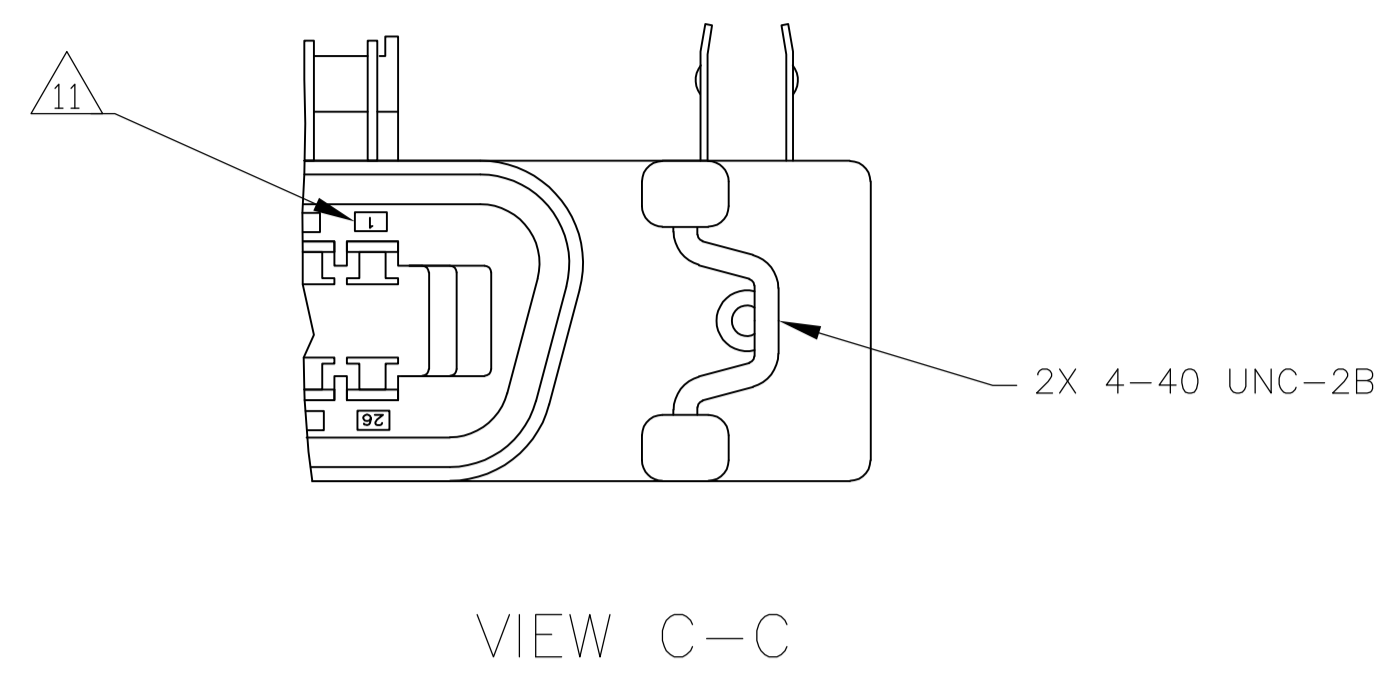
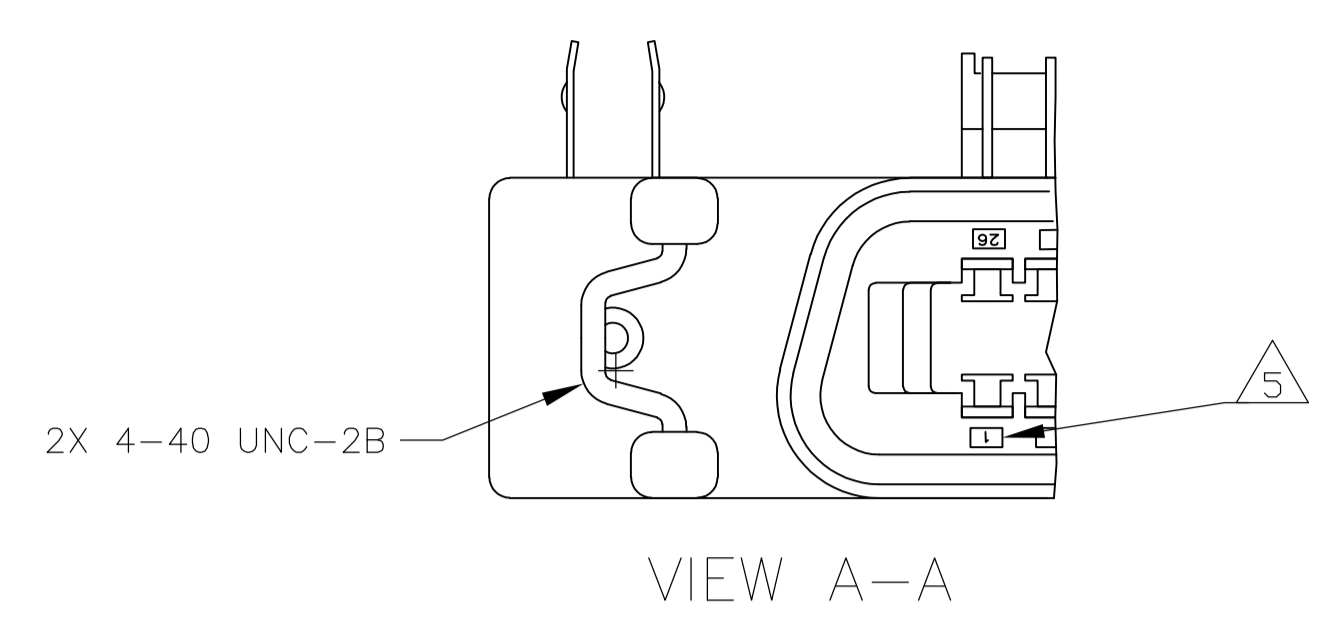


LOC		DIST		REVISIONS			
GP	00	REV	DATE	BY	CHK	APPV	
L		REVISED PER ECO-09-021037	22SEP2009	CR	PR		



- 1 MATERIAL:
HOUSING & ADAPTER COMB: POLYESTER, BLACK.
BAIL CLIPS: PASSIVATED STAINLESS STEEL.
RECEPTACLE SHIELD: BRIGHT NICKEL PLATED OVER COPPER PLATED ZINC.
TERMINALS - HIGH STRENGTH COPPER ALLOY PLATED WITH EITHER .000030 MIN GOLD PLATE OR GOLD FLASH OVER PALLADIUM NICKEL PLATE, .000030 MIN TOTAL ON MATING SURFACE. 3.05 μ m [.000120] MIN TIN-LEAD PLATE ON TAILS. ALL OVER 1.27 μ m [.000050] MIN NICKEL UNDERPLATE OVER ENTIRE TERMINAL.
GROUND BRACKET: TIN LEAD PLATED CARBON STEEL.
- 2. THE CONTACT SURFACES OF THE TERMINALS ARE COATED WITH LUBRICANT.
- 3. CENTER-TO-CENTER SPACING OF TERMINALS IS .085 NOMINAL.
- 4 ALL DIMENSIONS SHOWN ARE MAXIMUM UNLESS OTHERWISE SPECIFIED.
- 5 TERMINAL 1 LOCATED IN THIS ROW FOR STANDARD ORIENTATION.
- 6 GROUNDING BRACKET RETAINS CONNECTOR IN .062 THICK PC BOARD WITHOUT ADDITIONAL HARDWARE.
- 7 GROUNDING BRACKET LOCATES CONNECTOR FLUSH WITH TOP OF PC BOARD AND SPRING LOCKS BENEATH.
- 8 CYLINDRICAL SHAPE OFFERS 180° OF SOLDERING SURFACE.
- 9 SURFACE AREA OF GROUNDING BRACKET BELOW PC BOARD SHALL PASS SOLDERABILITY REQUIREMENTS IN ACCORDANCE WITH AMP SPEC 109-11-2. DISCOLORATION SCRATHES, SPOTS AND OTHER COSMETIC DEFICIENCIES TYPICAL OF BARREL PLATING PROCESSES ARE ACCEPTABLE PROVIDING PARTS PASS 24 HOUR EXPOSURE AT 95% RH AT 40°C WITHOUT EVIDENCE OF CORROSION.
- 10 BRACKET SUPPLIED BY CUSTOMER.
- 11 TERMINAL 1 LOCATED IN THIS ROW FOR REVERSE ORIENTATION.

ORIENTATION	DESCRIPTION	PART NUMBER
REVERSE, VIEW C-C \triangle 11	AS SHOWN	555149-3
STANDARD, VIEW A-A \triangle 5	WITHOUT BAIL CLIPS	555149-2
STANDARD, VIEW A-A \triangle 5	AS SHOWN	555149-1

THIS DRAWING IS A CONTROLLED DOCUMENT.		DIN Z. REAM 15/FEB/07		Tyco Electronics Corporation Harrisburg, PA 17105-3608																										
DIMENSIONS: INCHES		TOLERANCES UNLESS OTHERWISE SPECIFIED:		APVD W. MILLHIMES 15/FEB/07																										
<table border="1"> <tr><td>0 PLC</td><td>±</td><td>4</td></tr> <tr><td>1 PLC</td><td>±</td><td></td></tr> <tr><td>2 PLC</td><td>±</td><td></td></tr> <tr><td>3 PLC</td><td>±</td><td></td></tr> <tr><td>4 PLC</td><td>±</td><td></td></tr> </table>		0 PLC	±	4	1 PLC	±		2 PLC	±		3 PLC	±		4 PLC	±		<table border="1"> <tr><td>SIZE</td><td>CAGE CODE</td><td>DRAWING NO</td><td>RESTRICTED TO</td></tr> <tr><td>A1</td><td>00779</td><td>555149</td><td></td></tr> </table>		SIZE	CAGE CODE	DRAWING NO	RESTRICTED TO	A1	00779	555149		<table border="1"> <tr><td>NAME</td><td>RCPT ASSY, LPF, EXT SHLD, RTANG, 50 POSN, BD LK, BAIL LK, CHAMP</td></tr> </table>		NAME	RCPT ASSY, LPF, EXT SHLD, RTANG, 50 POSN, BD LK, BAIL LK, CHAMP
0 PLC	±	4																												
1 PLC	±																													
2 PLC	±																													
3 PLC	±																													
4 PLC	±																													
SIZE	CAGE CODE	DRAWING NO	RESTRICTED TO																											
A1	00779	555149																												
NAME	RCPT ASSY, LPF, EXT SHLD, RTANG, 50 POSN, BD LK, BAIL LK, CHAMP																													
MATERIAL \triangle 1		FINISH \triangle 1		CUSTOMER DRAWING																										
		SCALE 4:1		SHEET 1 OF 1 REV																										