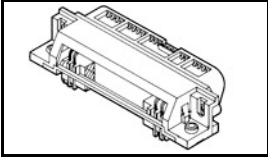


## 5552726-1 Product Details

[Share](#) [Print](#) [Email](#)




5552726-1

TE Internal Number: 5552726-1

 Active

[View 3D PDF](#)

### 2.16 [.085] PCB Connectors & Cable Assemblies

 Always EU RoHS/ELV Compliant  
(Statement of Compliance)

#### Product Highlights:

- Connector
- Connector Style = Plug
- 2.16 mm Centerline
- CHAMP Product Line
- 50 Positions

[View all Features](#)

#### Quick Links

- ▶ [Pricing & Availability](#)
- ▶ [Search for Tooling](#)
- ▶ [Product Feature Selector](#)
- ▶ [Contact Us About This Product](#)

[Add to My Part List](#)

[Request Sample](#)

[Find Similar Products](#)

[Buy Product](#)

### Documentation & Additional Information

#### Product Drawings:

- [PLUG ASSEMBLY, 50 POSITION, RIGHT ANGLE, SELF TAPPIN...](#) (PDF, English)

#### Catalog Pages/Data Sheets:

- None Available

#### Product Specifications:

- None Available

#### Application Specifications:

- None Available

#### Instruction Sheets:

- None Available

#### CAD Files: (CAD Format & Compression Information)

- [2D Drawing](#) (DXF, Version 0)
- [3D Model](#) (IGES, Version 0)
- [3D Model](#) (STEP, Version 0)

[List all Documents](#)

#### Additional Information:

- [Product Line Information](#)

#### Related Products:

- [Tooling](#)

### Product Features (Please use the Product Drawing for all design activity)

#### Product Type Features:

- Product Type = Connector
- Product Line = CHAMP
- [PCB Mount Style](#) = Right Angle
- [Orientation](#) = Standard
- [Profile](#) = Standard
- Mating Connector Lock = Without
- [PCB Mount Retention](#) = With
- [PCB Mount Retention Type](#) = Self-Tapping
- [Grounded](#) = No
- Color = Black

#### Mechanical Attachment:

- [Panel Mount Retention](#) = With
- Panel Attachment Style = Rear Mount
- Comb Material = Thermoplastic

#### Contact Features:

- [Contact Plating, Mating Area, Material](#) = Gold
- Contact Base Material = Copper Alloy
- Solder Tail Contact Plating = Tin

#### Housing Features:

- Connector Style = Plug
- Centerline (mm [in]) = 2.16 [0.085]
- Housing Material = Thermoplastic - GF
- UL Flammability Rating = UL 94V-0

#### Configuration Features:

- [Number of Positions](#) = 50
- [Shielded](#) = No

#### Industry Standards:

- [RoHS/ELV Compliance](#) = RoHS compliant, ELV

**Dimensions:**

- Panel Thickness (mm [in]) = 1.57 [0.062]

**Body Features:**

- Bracket Material = Thermoplastic
- Plate Material = Thermoplastic

compliant

- [Lead Free Solder Processes](#) = Wave solder capable to 240°C, Wave solder capable to 260°C, Wave solder capable to 265°C
- RoHS/ELV Compliance History = Always was RoHS compliant

**Other:**

- Brand = AMP
- Comment = For filtered connector, order P/N 93532-2.

**Corporate Information**

[About TE](#)  
[Investors](#)  
[News Room](#)  
[Supplier Portal](#)  
[Careers](#)  
[Terms & Conditions](#)  
[Privacy Policy](#)

**Quick Links**

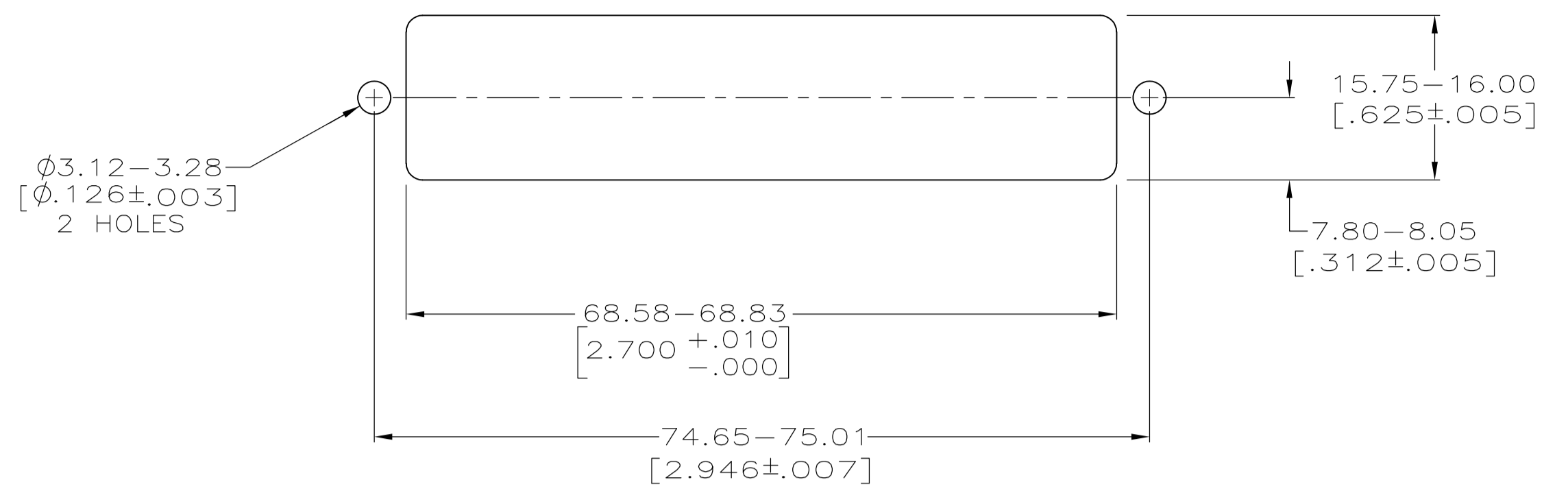
[Distributor Inventory](#)  
[Product Cross Reference](#)  
[Documents & Drawings](#)  
[Product Compliance Support Center](#)  
[Site Map](#)

**Customer Support**

[Email or Chat With Us](#)  
[Find a Phone Number](#)  
[Knowledge Base](#)  
[Manage Your Account](#)

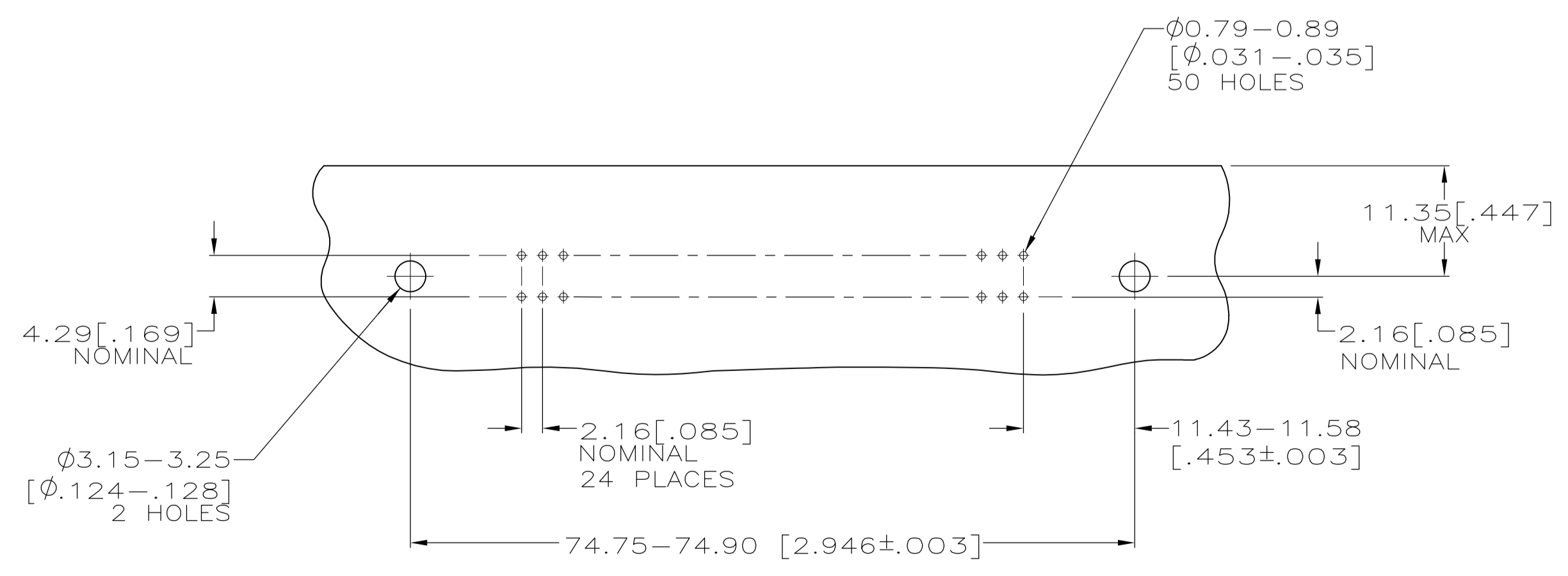
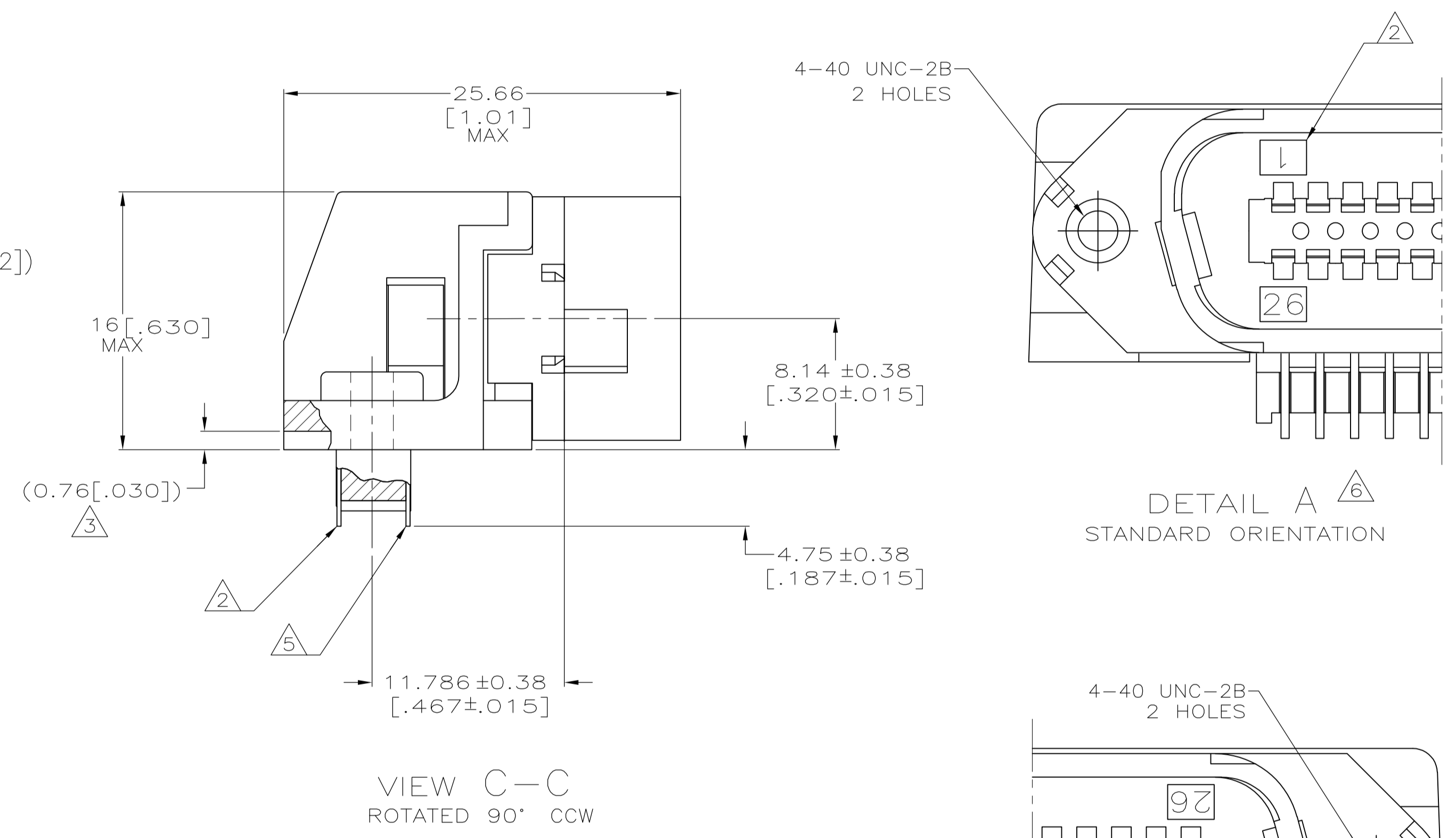
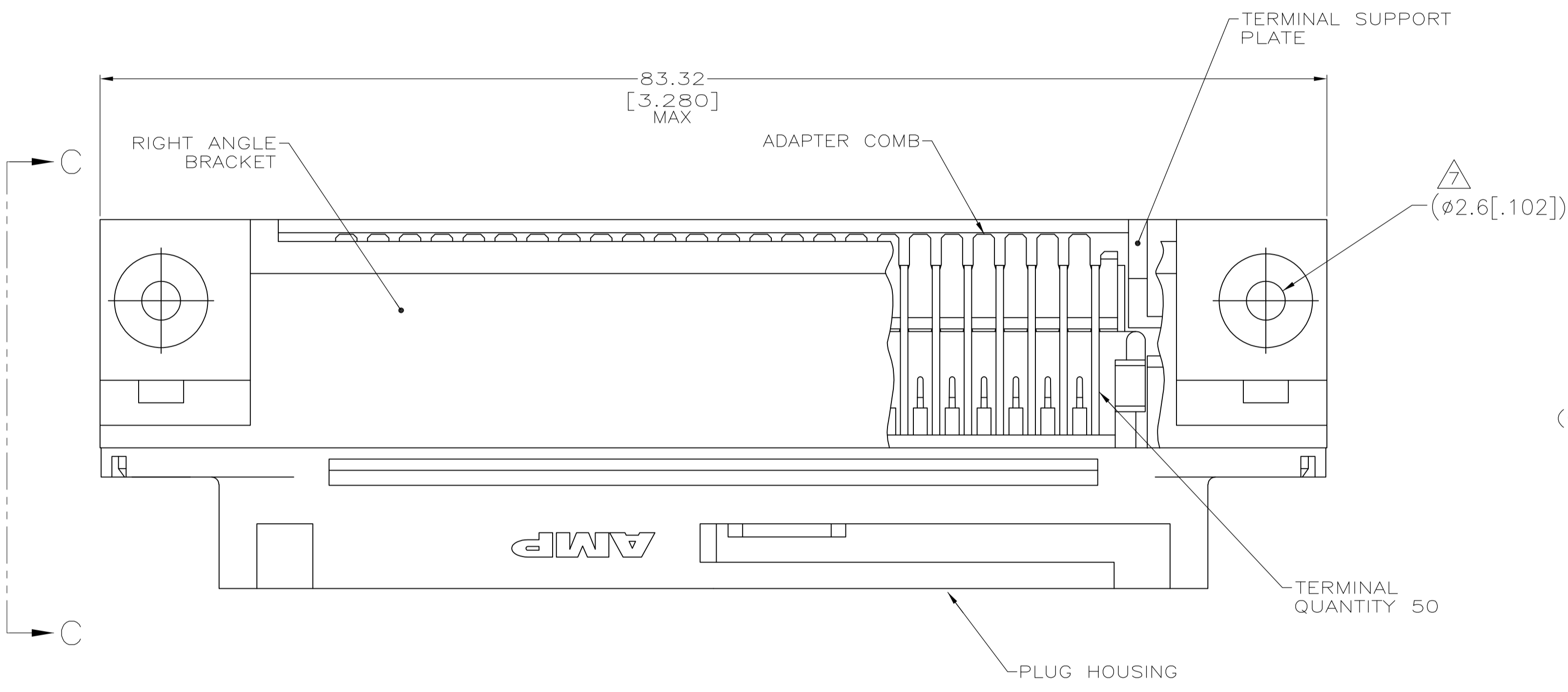
**Keep Me Informed**

LOC		DIST		REVISIONS			
P	LTR	DATE	DMN	APVD			
B		REVISED PER ECO-08-007327	08APR08	BM	WM		



SUGGESTED REAR PANEL MOUNTING CUTOUT DIMENSIONS SCALE 2:1

- 1 MATERIAL: HOUSING, BRACKET, PLATE & COMB - THERMOPLASTIC, BLACK, 94V-0 RATED. TERMINALS - HIGH STRENGTH COPPER ALLOY PLATED WITH EITHER  $0.76\mu\text{m}$  [.000030] MIN GOLD PLATE OR GOLD FLASH OVER PALLADIUM NICKEL PLATE,  $0.76\mu\text{m}$  [.000030] MIN TOTAL ON MATING SURFACE.  $3.05\mu\text{m}$  [.000120] MIN TIN PLATE ON TAILS. ALL OVER  $1.27\mu\text{m}$  [.000050] MIN NICKEL UNDERPLATE OVER ENTIRE TERMINAL.
- 2 TERMINAL 1 IS LOCATED IN THIS ROW FOR STANDARD ORIENTATION, 5552726-1 ONLY.
- 3 TERMINAL SUPPORT PLATE CLEARANCE FOR TERMINAL STRAIN RELIEF AND FLUX REMOVAL.
- 4 MAXIMUM PANEL THICKNESS: 1.57 [.062].
- 5 TERMINAL 1 IS LOCATED IN THIS ROW FOR REVERSE ORIENTATION, 5552726-3 ONLY.
- 6 DETAILS "A" AND "B" ARE VIEWED FROM MATING SIDE OF RECEPTACLE ASSEMBLY.
- 7 FOR USE WITH A NO.4 BT TYPE SELF-TAPPING SCREW.



SUGGESTED PRINTED CIRCUIT BOARD MOUNTING DIMENSIONS SCALE 2:1

TYPE OF MOUNTING	DESCRIPTION	PART NUMBER
SELF TAPPING 7	SEE DETAIL B 5	5552726-3
SELF TAPPING 7	SEE DETAIL A 5	5552726-1

THIS DRAWING IS A CONTROLLED DOCUMENT.		DIN B1 MCMASTER 10AUG05	Tyco Electronics Corporation Tyco Electronics Corporation Harrisburg, PA 17105-3608	
DIMENSIONS: mm [INCHES]		CHK W. MILLIMES 10AUG05	NAME PLUG ASSEMBLY, 50 POSITION, RIGHT ANGLE, SELF TAPPING, CHAMP®	
TOLERANCES UNLESS OTHERWISE SPECIFIED:		APVD W. WALSLEY 10AUG05	PRODUCT SPEC	
0 PLC ± -	1 PLC ± -	APPLICATION SPEC		
2 PLC ± -	3 PLC ± 0.13 [.005]	SIZE CAGE CODE DRAWING NO		
4 PLC ± -	ANGLES ± -	RESTRICTED TO		
MATERIAL 1	FINISH 1	WEIGHT -	A1 00779 5552726	SCALE 4:1 SHEET 1 OF 1 REV B
CUSTOMER DRAWING		SCALE 4:1 SHEET 1 OF 1 REV B		