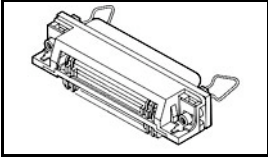


5555149-1 Product Details

[Share](#) [Print](#) [Email](#)




5555149-1

TE Internal Number: 5555149-1

 Active

[View 3D PDF](#)

2.16 [.085] PCB Connectors & Cable Assemblies

 Always EU RoHS/ELV Compliant
(Statement of Compliance)

Product Highlights:

- Connector
- Connector Style = Receptacle
- 2.16 mm Centerline
- CHAMP Product Line
- 50 Positions

[View all Features](#)

Quick Links

- ▶ [Pricing & Availability](#)
- ▶ [Search for Tooling](#)
- ▶ [Product Feature Selector](#)
- ▶ [Contact Us About This Product](#)

[Add to My Part List](#)

[Request Sample](#)

[Find Similar Products](#)

[Buy Product](#)

Documentation & Additional Information

Product Drawings:

- [RCPT ASSY, LPF, EXT SHLD, RTANG, 50 POSN, BD LK, BAI...](#) (PDF, English)

Catalog Pages/Data Sheets:

- None Available

Product Specifications:

- None Available

Application Specifications:

- None Available

Instruction Sheets:

- None Available

CAD Files: (CAD Format & Compression Information)

- [2D Drawing](#) (DXF, Version 0)
- [3D Model](#) (IGES, Version 0)
- [3D Model](#) (STEP, Version 0)

[List all Documents](#)

Additional Information:

- [Product Line Information](#)

Related Products:

- [Tooling](#)

Product Features (Please use the Product Drawing for all design activity)

Product Type Features:

- Product Type = Connector
- Product Line = CHAMP
- [PCB Mount Style](#) = Right Angle
- [Orientation](#) = Standard
- [Profile](#) = Low
- Mating Connector Lock = With
- Mating Connector Lock Type = Bail Lock
- [PCB Mount Retention](#) = With
- [PCB Mount Retention Type](#) = Boardlock(s)
- [Grounded](#) = Yes
- Color = Black
- Screw Size = 4-40

Mechanical Attachment:

- [Panel Mount Retention](#) = With

Contact Features:

- [Contact Plating, Mating Area, Material](#) = Gold
- Contact Base Material = Copper Alloy
- Solder Tail Contact Plating = Tin

Housing Features:

- Connector Style = Receptacle
- Centerline (mm [in]) = 2.16 [0.085]
- Housing Material = Polyester

Configuration Features:

- [Number of Positions](#) = 50
- [Shielded](#) = Yes

Industry Standards:

- [RoHS/ELV Compliance](#) = RoHS compliant, ELV compliant

- Panel Attachment Style = Rear Mount
- Comb Material = Polyester
- Bail-Clip Material = Stainless Steel
- Bail-Clip Finish = Passivated

Dimensions:

- PCB Thickness, Recommended (mm [in]) = 1.57 [0.062]

Body Features:

- Plate Material = Polyester
- Shield Material = Die Cast Metal
- Shield Plating = Bright Nickel over Copper
- Ground Bracket Material = Carbon Steel
- Ground Bracket Plating = Tin

- [Lead Free Solder Processes](#) = Wave solder capable to 260°C, Wave solder capable to 240°C, Wave solder capable to 265°C
- RoHS/ELV Compliance History = Always was RoHS compliant

Operation/Application:

- Application = SCSI

Packaging Features:

- Packaging Quantity = 270

Other:

- Brand = AMP
- Comment = Maximum PC Board Thickness 1.57 [.062]; SCSI- Applicable.; Compatible with IBM PC AT and PC XT.

Corporate Information

- [About TE](#)
- [Investors](#)
- [News Room](#)
- [Supplier Portal](#)
- [Careers](#)
- [Terms & Conditions](#)
- [Privacy Policy](#)

Quick Links

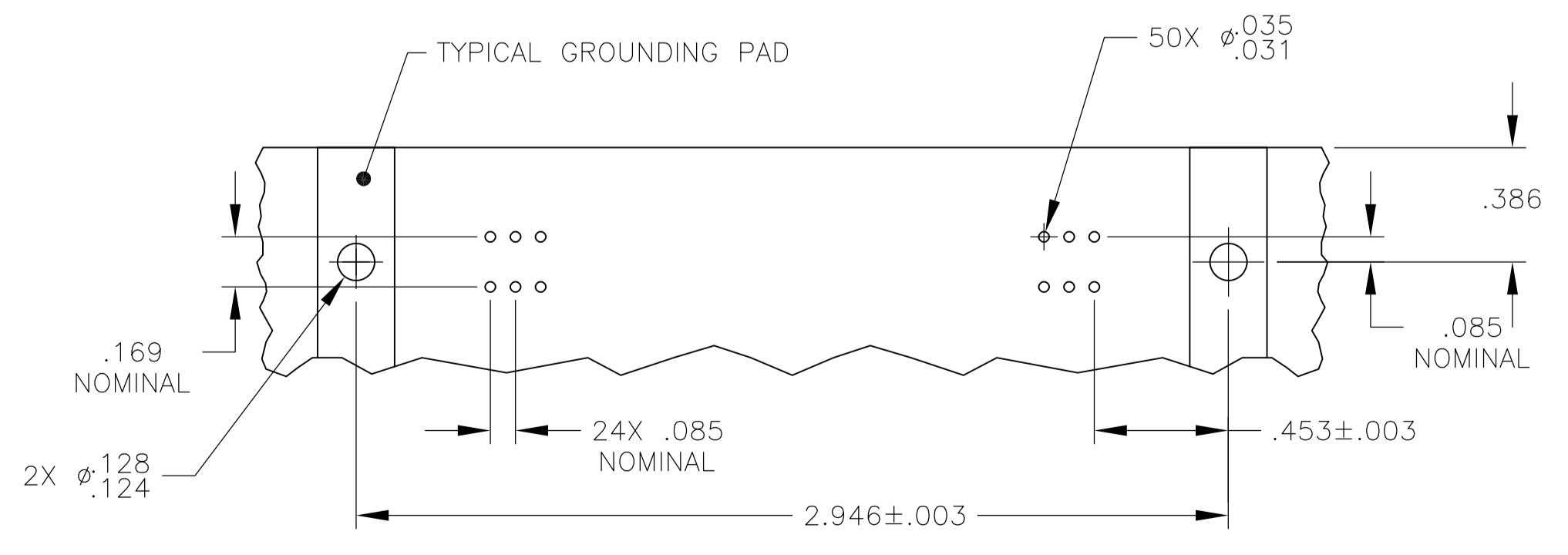
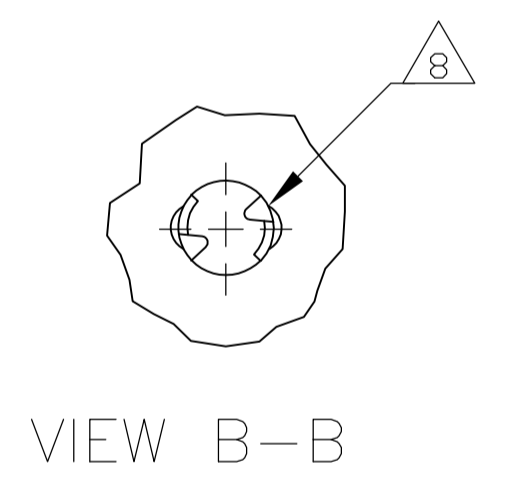
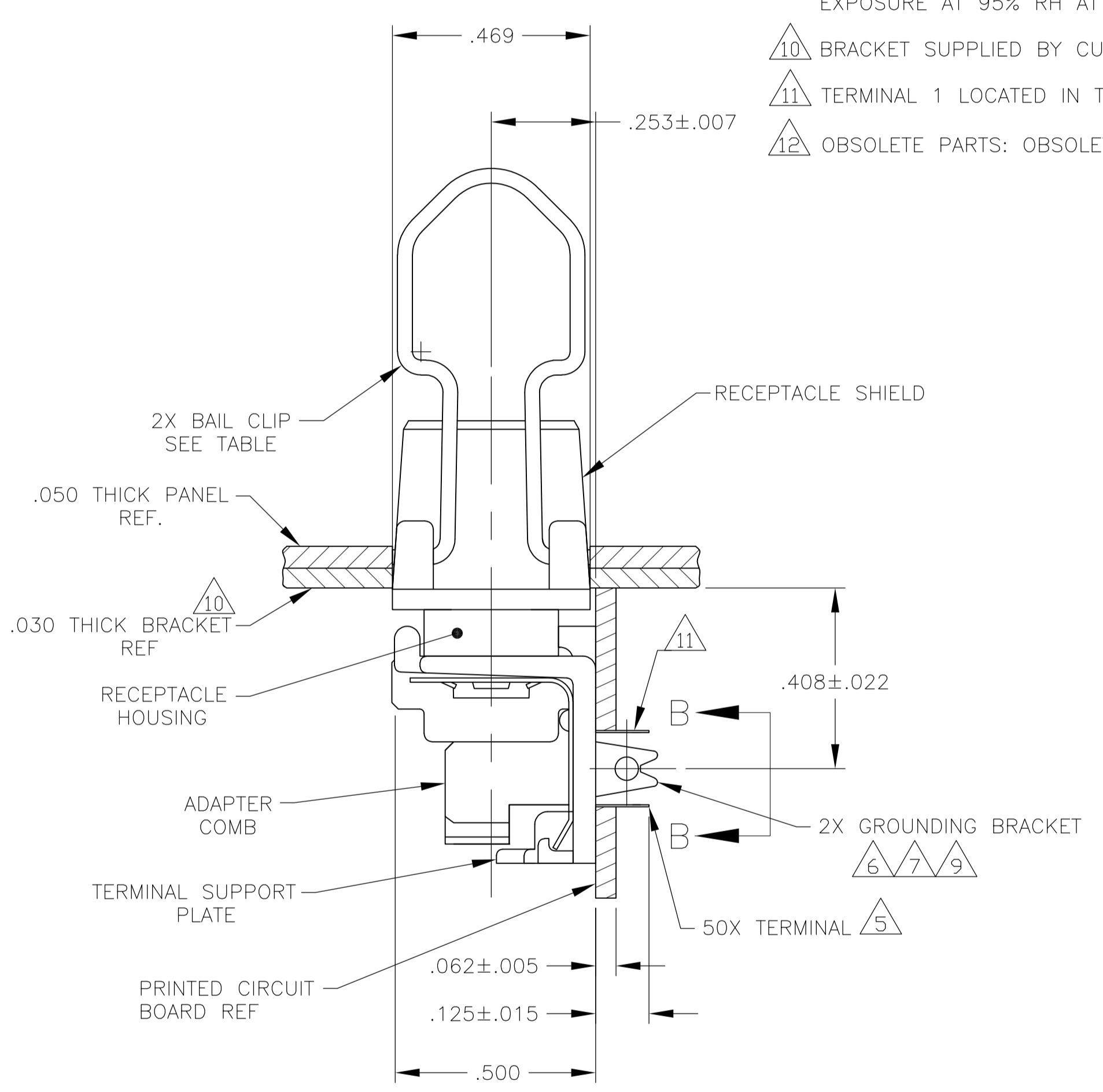
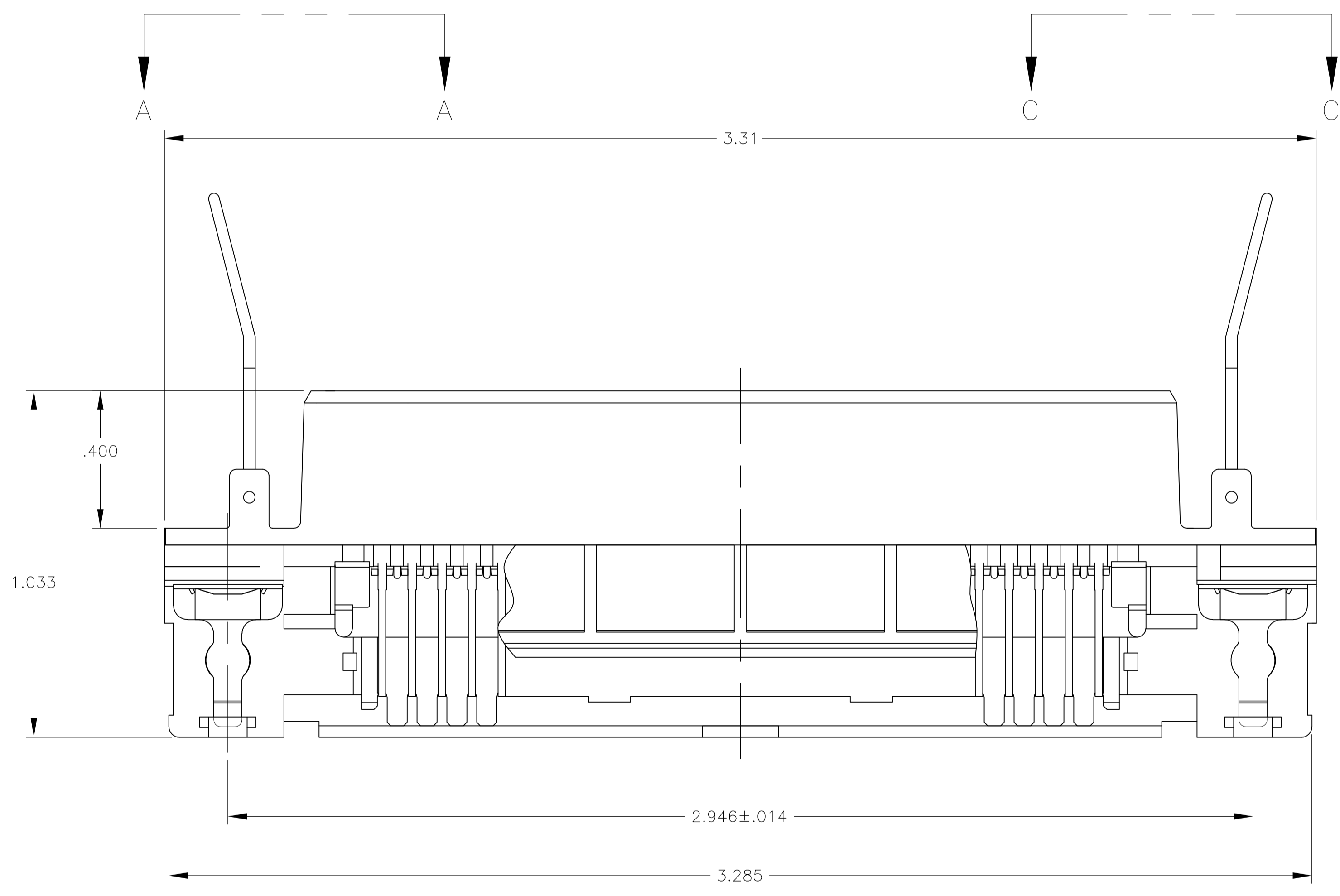
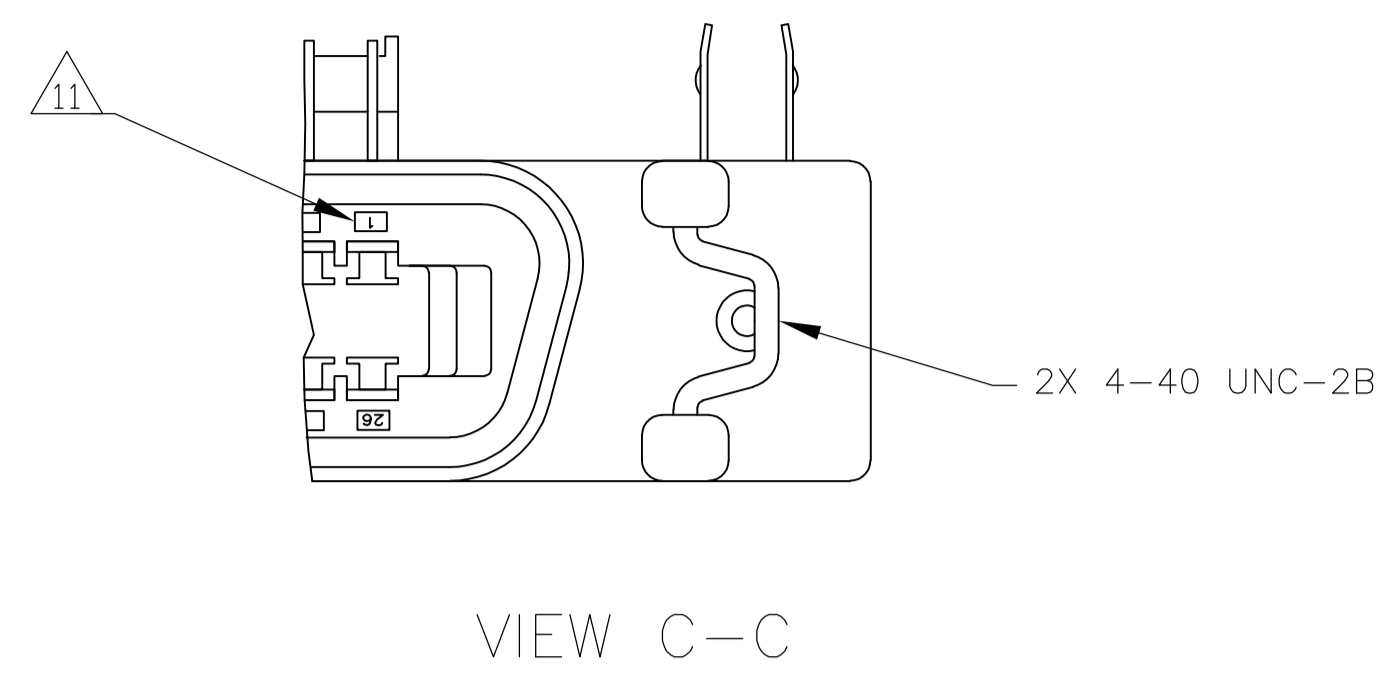
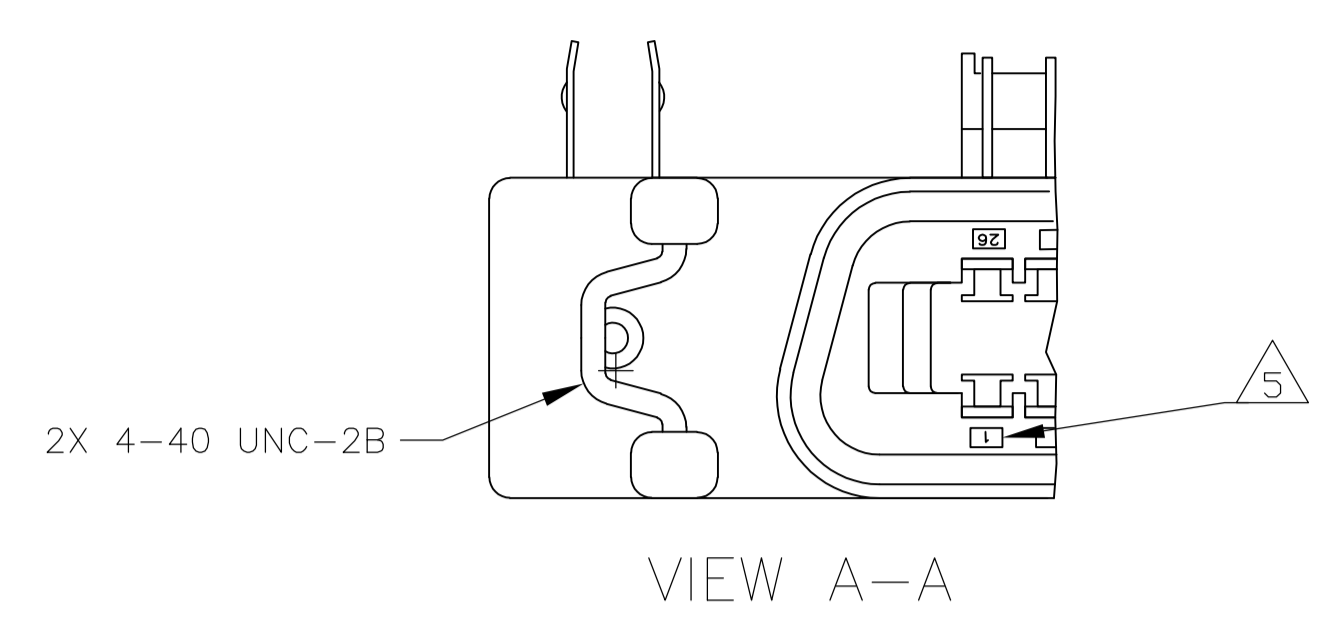
- [Distributor Inventory](#)
- [Product Cross Reference](#)
- [Documents & Drawings](#)
- [Product Compliance Support Center](#)
- [Site Map](#)

Customer Support

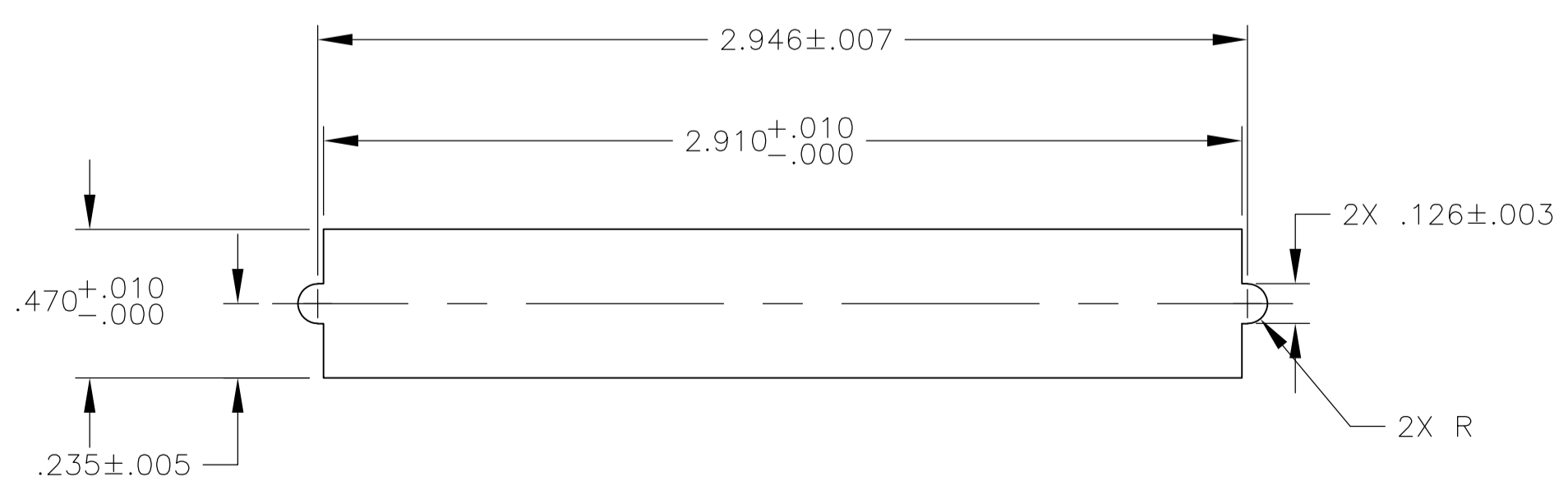
- [Email or Chat With Us](#)
- [Find a Phone Number](#)
- [Knowledge Base](#)
- [Manage Your Account](#)

Keep Me Informed





SUGGESTED PRINTED BOARD MOUNTING DIMENSIONS SCALE 2:1



SUGGESTED BRACKET MOUNTING CUTOUT DIMENSIONS SCALE 2:1

- 1 MATERIAL:
 HOUSING & ADAPTER COMB - POLYESTER, BLACK.
 BAIL CLIPS - PASSIVATED STAINLESS STEEL.
 RECEPTACLE SHIELD - BRIGHT NICKEL PLATED OVER COPPER ZINC.
 TERMINALS - HIGH STRENGTH COPPER ALLOY PLATED WITH EITHER .000030 MIN GOLD PLATE OR GOLD FLASH OVER PALLADIUM NICKEL PLATE, .000030 MIN TOTAL ON MATING SURFACE, .000120 MIN TIN PLATE ON TAILS, ALL OVER .000050 MIN NICKEL UNDERPLATE OVER ENTIRE TERMINAL.
 GROUND BRACKET - TIN PLATED CARBON STEEL.
2. THE CONTACT SURFACES OF THE TERMINALS ARE COATED WITH LUBRICANT.
3. CENTER-TO-CENTER SPACING OF TERMINALS IS .085 NOMINAL.
4. ALL DIMENSIONS SHOWN ARE MAXIMUM UNLESS OTHERWISE SPECIFIED.
- 5 TERMINAL 1 LOCATED IN THIS ROW FOR STANDARD ORIENTATION.
- 6 GROUNDING BRACKET RETAINS CONNECTOR IN .062 THICK PC BOARD WITHOUT ADDITIONAL HARDWARE.
- 7 GROUNDING BRACKET LOCATES CONNECTOR FLUSH WITH TOP OF PC BOARD AND SPRING LOCKS BENEATH.
- 8 CYLINDRICAL SHAPE OFFERS 180° OF SOLDERING SURFACE.
- 9 SURFACE AREA OF GROUNDING BRACKET BELOW PC BOARD SHALL PASS SOLDERABILITY REQUIREMENTS IN ACCORDANCE WITH AMP SPEC 109-11-2. DISCOLORATION SCRATHES, SPOTS AND OTHER COSMETIC DEFICIENCIES TYPICAL OF BARREL PLATING PROCESSES ARE ACCEPTABLE PROVIDING PARTS PASS 24 HOUR EXPOSURE AT 95% RH AT 40°C WITHOUT EVIDENCE OF CORROSION.
- 10 BRACKET SUPPLIED BY CUSTOMER.
- 11 TERMINAL 1 LOCATED IN THIS ROW FOR REVERSE ORIENTATION.
- 12 OBSOLETE PARTS: OBSOLETE CIS STREAMLINING PER D.RENAUD/D.SINISI

OBSOLETE	REVERSE, VIEW C-C	AS SHOWN	5555149-3
	STANDARD, VIEW A-A	WITHOUT BAIL CLIPS	5555149-2
		AS SHOWN	5555149-1
	ORIENTATION	DESCRIPTION	PART NUMBER

THIS DRAWING IS A CONTROLLED DOCUMENT.		DIN B	MCMAS	28JULY05	TE Connectivity	
DIMENSIONS: INCHES		0 PLC	1 PLC	2 PLC	3 PLC	4 PLC
TOLERANCES UNLESS OTHERWISE SPECIFIED:		±	±	±	±	±
MATERIAL		FINISH	WEIGHT	SIZE	CAGE CODE	DRAWING NO
CUSTOMER DRAWING		SCALE	4:1	SHEET	1 OF 1	REV