



Have a Question?
Chat with a Product
Information Specialist

What can we help you find?

[Products](#) [Industries](#) [Resources](#) [About TE](#) [My Account](#) [Innovation](#) [Support Center](#)

5555153-1 Product Details

Share Print Email



5555153-1

TE Internal Number: 5555153-1

Active

View 3D PDF

PCB Mounted Jacks - Single Port, Multi-port and Stacked

Always EU RoHS/ELV Compliant (Statement of Compliance)

Product Highlights:

- Connector
- Preloaded
- Single Port Configuration
- 1 x 1 Jack Configuration
- Jack Type = RJ45

[View all Features](#)

Quick Links

- ▶ [Pricing & Availability](#)
- ▶ [Search for Tooling](#)
- ▶ [Product Feature Selector](#)
- ▶ [Contact Us About This Product](#)

[Add to My Part List](#) [Request Sample](#) [Find Similar Products](#) [Buy Product](#)

Documentation & Additional Information

Product Drawings:

- [MODULAR JACK ASSEMBLY, SHIELDED, 8 POSITION, LOW PRO...](#) (PDF, English)

Catalog Pages/Data Sheets:

- [1-1773464-9_MODULAR JACKS_SINGLE_PORT_PCB_MOUNT](#) (PDF, English)
- [82066 - Modular Jacks and MRJ21 Product catalog - Si...](#) (PDF, English)

Product Specifications:

- [Modular Plugs, Thru-Hole and Surface Mount Jacks, Da...](#) (PDF, English)

Application Specifications:

- [Modular Jacks](#) (PDF, English)

Instruction Sheets:

- None Available

CAD Files: [\(CAD Format & Compression Information\)](#)

- [2D Drawing](#) (DXF, Version C)
- [3D Model](#) (IGES, Version C)
- [3D Model](#) (STEP, Version C)

[List all Documents](#)

Additional Information:

- [Product Line Information](#)

Additional Product Images:

- [Panel Cutout](#)

Related Products:

- [Tooling](#)

Product Features (Please use the Product Drawing for all design activity)

Product Type Features:

- Product Type = Connector
- Jack Type = RJ45
- PCB Mounting Orientation = Side Entry (Right Angle)
- PCB Mount Style = Through Hole
- Termination Method to PC Board = Solder
- Performance Category = Cat 3
- LED = Without
- Grounding Options = PCB Ground
- Panel Stops = With
- Keyed = No
- Profile = Low
- Color = Black
- Shield Material = Copper Alloy
- Latch Style = Standard

Mechanical Attachment:

- Panel Mount Retention = With
- Flanged = No

Electrical Characteristics:

- Shielded = Yes

Termination Features:

- Solder Tail Contact Plating = Tin over Nickel

Dimensions:

- Height (mm [in]) = 12.70 [0.500]
- PCB Tail Length (mm [in]) = 3.80 [0.150]
- PCB Thickness, Recommended (mm [in]) = 1.57 [0.062]

Contact Features:

- Contact Plating, Mating Area, Material = Gold (50)
- Contact Base Material = Phosphor Bronze

Housing Features:

- Housing Material = PBT - GF
- UL Flammability Rating = UL 94V-0

Configuration Features:

- Preloaded = Yes
- Port Configuration = Single
- Jack Configuration = 1 x 1
- Number of Positions = 8
- Number of Contacts Loaded = 8
- Number of PCB Ground Tabs = 2

Industry Standards:

- RoHS/ELV Compliance = RoHS compliant, ELV compliant
- Lead Free Solder Processes = Wave solder capable to 240°C, Wave solder capable to 260°C, Wave solder capable to 265°C
- RoHS/ELV Compliance History = Always was RoHS compliant

Packaging Features:

- Packaging Method = Tray
- Packaging Quantity = Bulk

Product Availability:

- Region = Asia, North America

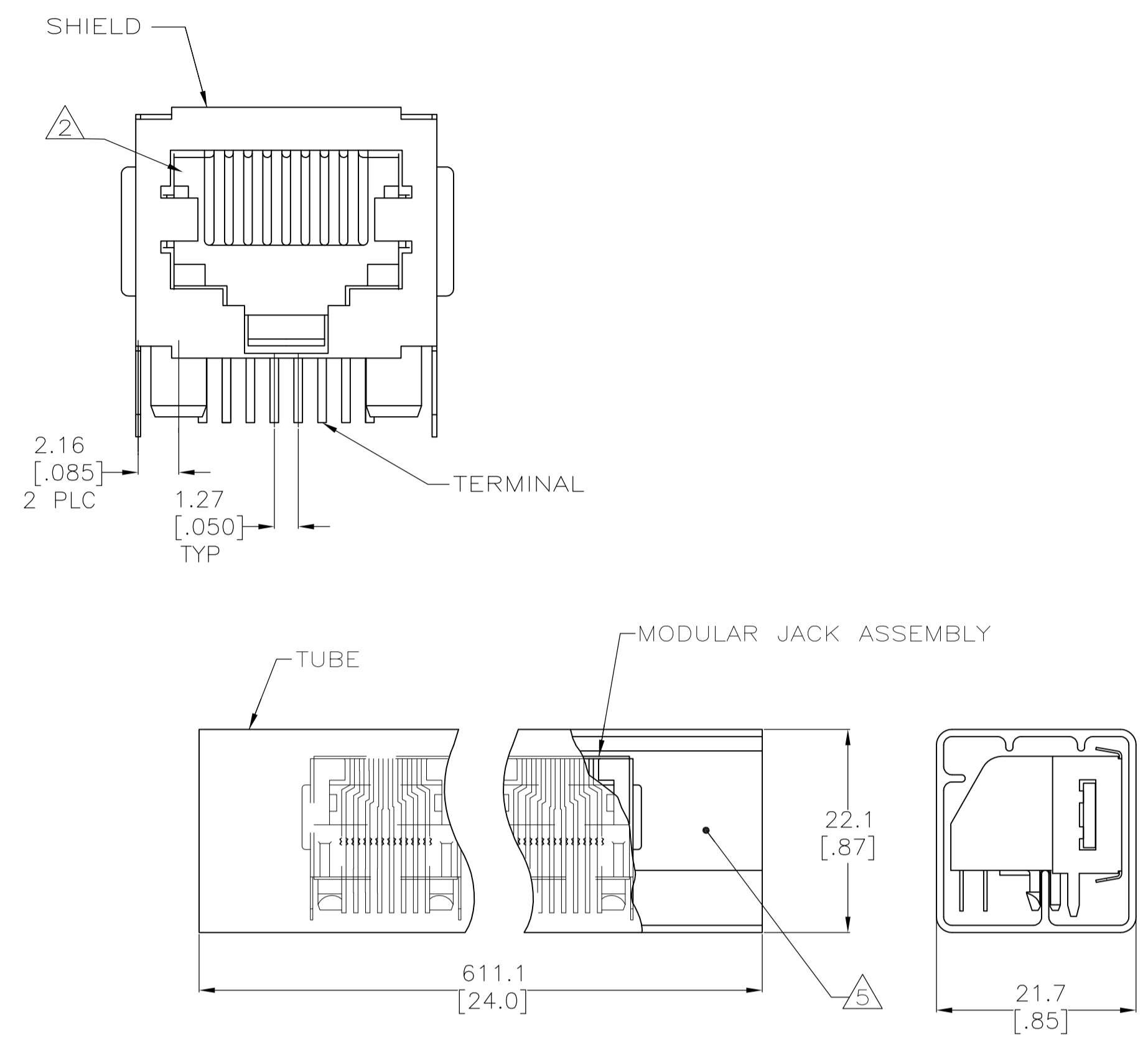
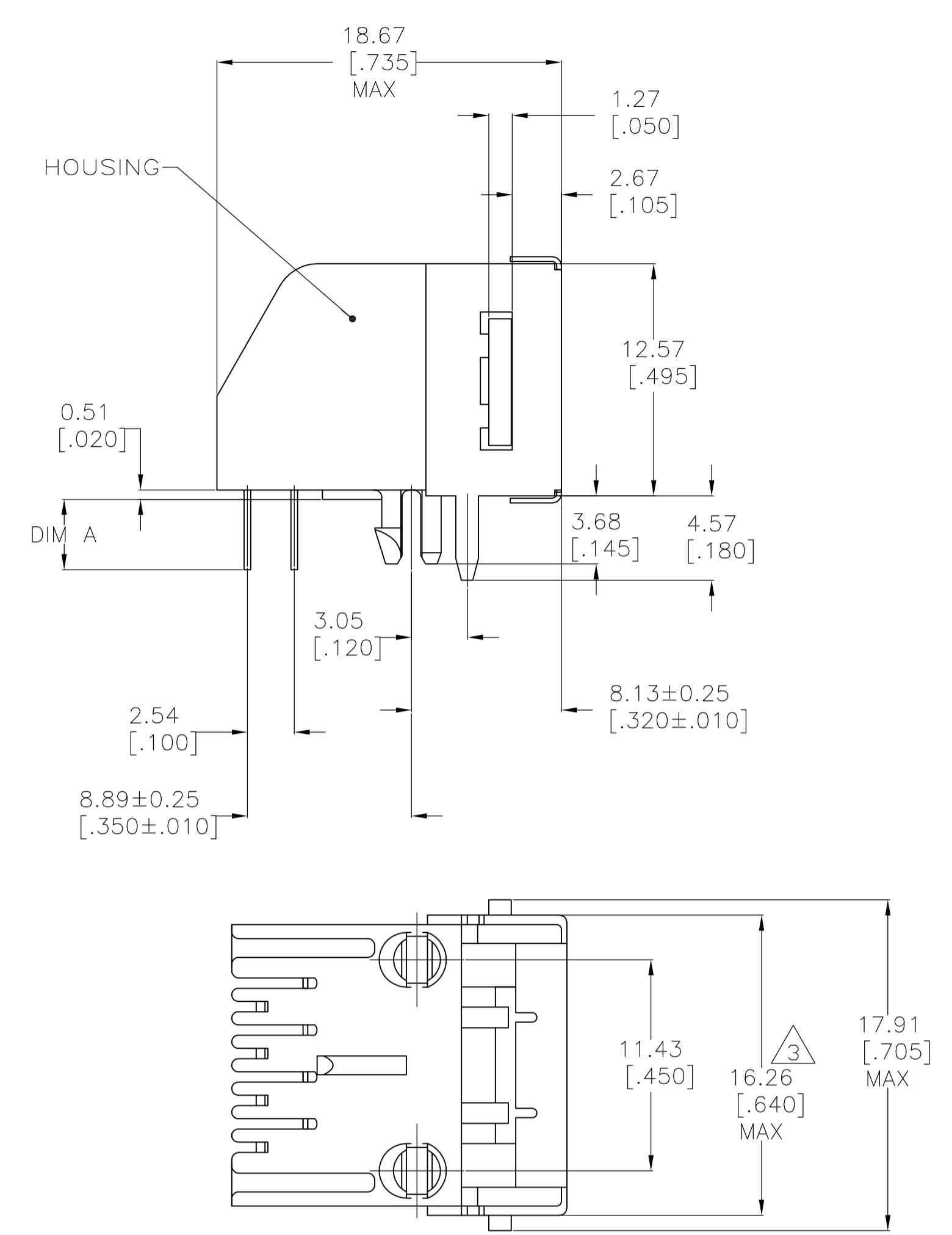
Other:

Body Features:

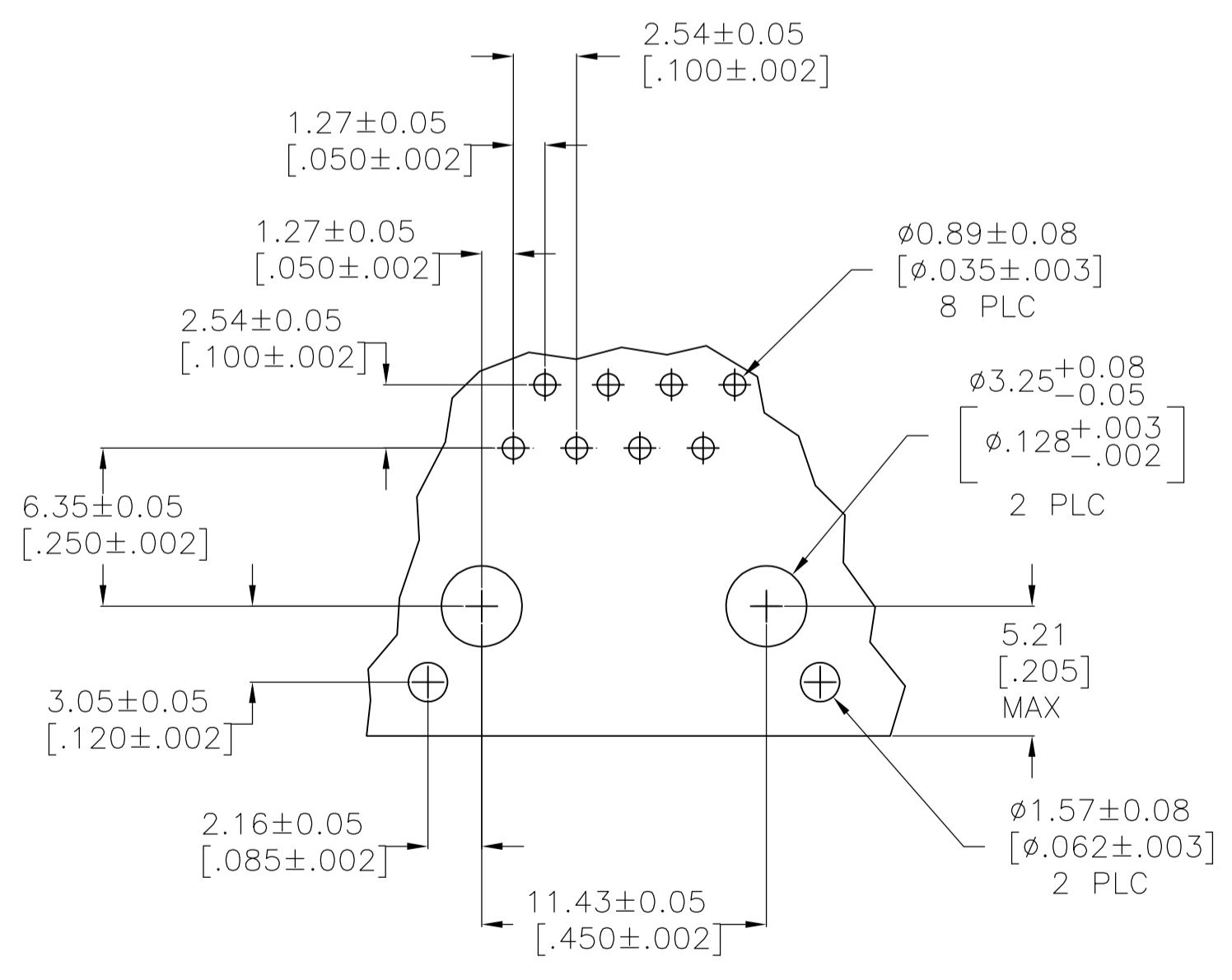
- Inverted Jack Face = No
- Shield Plating = Tin
- PCB Ground Tab Location (mm [in]) = 3.05 [0.120]

- Brand = AMP

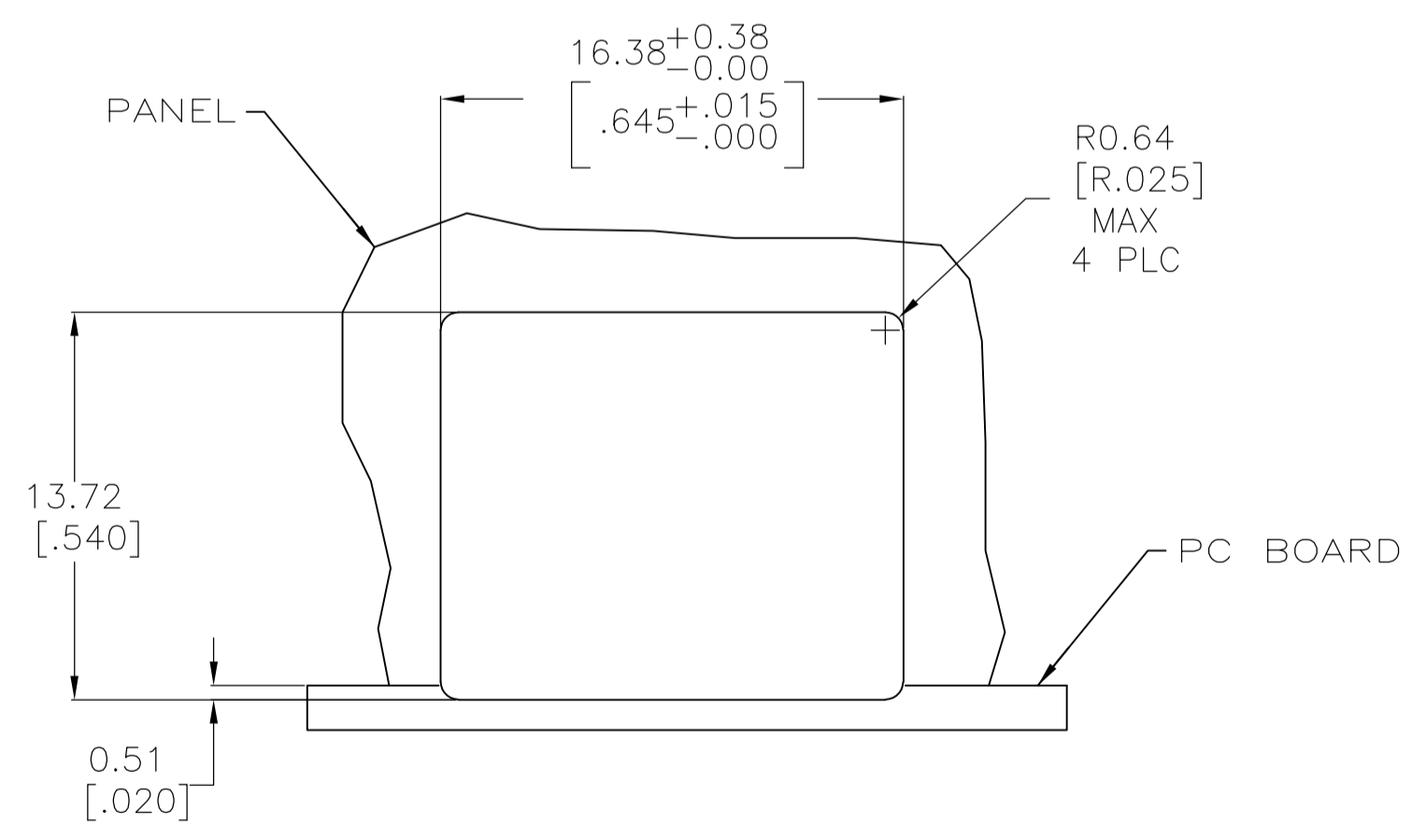
LOC		DIST		REVISIONS			
GP	00	REV	DATE	BY	CHK	APPV	
D1	REVISED PER ECO-11-005140	28MAR11	RK	HMR			



DETAIL B
SCALE 2:1



RECOMMENDED PRINTED CIRCUIT BOARD LAYOUT
(COMPONENT SIDE)



RECOMMENDED PANEL CUTOUT

1. MATERIAL:
 HOUSING - PBT POLYESTER, COLOR: BLACK
 TERMINAL - 0.36[.014] THICK PHOS BRONZE PLATED WITH 1.27 μ m [.000050] THICK HARD GOLD IN LOCALIZED GOLD PLATE AREA AND 2.03 μ m [.000080] THICK MATTE TIN IN SOLDER AREA OVER 1.27 μ m [.000050] THICK NICKEL UNDERPLATE
 SHIELD - 0.25 [.010] THICK COPPER ALLOY PLATED WITH 3.0 μ m [.000120] MINIMUM THICK REFLOWED TIN
- △2 CAVITY CONFORMS TO FCC RULES AND REGULATIONS PART 68, SUBPART F.
 - △3 DIMENSIONS MEASURED ALONG FRONT EDGES OF MATING FACE
 - △4 BULK PACKAGED IN A TRAY
 - △5 32 ASSEMBLIES PACKAGED PER TUBE. SEE DETAIL B

1.78-2.79 [.09±.02]	△4	5555153-6
2.54-3.05 [.11±.01]	△4	5555153-5
3.30-4.32 [.15±.02]	△5	5555153-3
3.30-4.32 [.15±.02]	△4	5555153-1
DIM A	PACKAGED	PART NUMBER

THIS DRAWING IS A CONTROLLED DOCUMENT.

DIMENSIONS: mm [INCHES]	TOLERANCES UNLESS OTHERWISE SPECIFIED: 0 PLC ± - 1 PLC ± - 2 PLC ± 0.13[.005] 3 PLC ± - 4 PLC ± - ANGLES ± -	APPROVED: S. FLICKINGER DATE: 05NOV2007	NAME: MODULAR JACK ASSEMBLY, SHIELDED, 8 POSITION, LOW PROFILE, RIGHT ANGLE, PANEL GROUND WITH PANEL STOPS
MATERIAL: SEE NOTE 1	FINISH: SEE NOTE 1	WEIGHT: -	SIZE: A1

CUSTOMER DRAWING SCALE 4:1 SHEET 1 OF 1 REV D1