

---

**Connector, Standard Edge**

---

**1. SCOPE****1.1. Content**

This specification covers performance, tests and quality requirements for the AMP\* Standard Edge connector. This connector is a multi-contact, edge board type assembly having contacts of various lengths for plug-on, wrap or solder applications.

**1.2. Qualification**

When tests are performed on subject product line, procedures specified in AMP 109 series specifications shall be used. All inspections shall be performed using the applicable inspection plan and product drawing.

**2. APPLICABLE DOCUMENTS**

The following documents form a part of this specification to the extent specified herein. Unless otherwise specified, the latest edition of the document applies. In the event of conflict between the requirements of this specification and the product drawing, the product drawing shall take precedence. In the event of conflict between the requirements of this specification and the referenced documents, this specification shall take precedence.

**2.1. AMP Specifications**

- A. 109-1: General Requirements for Test Specifications
- B. 109 Series: Test Specifications as indicated in Figure 1. (Comply with MIL-STD-202, MIL-STD-1344 and EIA RS-364)
- C. Corporate Bulletin 401-76: Cross-reference between AMP Test Specifications and Military or Commercial Documents
- D. 501-227: Test Report

**2.2. Military Standard**

MIL-STD-275: Printed Wiring for Electronic Equipment

**3. REQUIREMENTS****3.1. Design and Construction**

Product shall be of the design, construction and physical dimensions specified on the applicable product drawing.

**3.2. Materials**

- A. Contact: Phosphor bronze, gold plating
- B. Housing: Polyester

### 3.3. Ratings

- A. Voltage: 400 volts (rms) at sea level
- B. Current: 3 amperes maximum with not more than 6 adjacent or opposing circuits carrying this current
- C. Temperature: -55 to 85°C

### 3.4. Performance and Test Description

Product is designed to meet the electrical, mechanical and environmental performance requirements specified in Figure 1. All tests are performed at ambient temperature unless otherwise specified.

### 3.5. Test Requirements and Procedures Summary

Test Description	Requirement	Procedure								
Examination of product.	Meets requirements of product drawing.	Visual, dimensional and functional per applicable quality inspection plan.								
Termination resistance, dry circuit.	10 milliohms maximum.	AMP Spec 109-6-1. Subject mated contacts assembled in housing to 50 mv open circuit at 100 ma maximum. See Figure 3.								
Dielectric withstanding voltage.	<table border="0"> <tr> <td>Test Voltage</td> <td>Centerline</td> </tr> <tr> <td>RMS</td> <td>Spacing</td> </tr> <tr> <td>1000</td> <td>.100</td> </tr> <tr> <td>1500</td> <td>.125</td> </tr> </table> 5 milliamperes maximum leakage.	Test Voltage	Centerline	RMS	Spacing	1000	.100	1500	.125	AMP Spec 109-29-1. Test between adjacent contacts of unmated connector assemblies.
Test Voltage	Centerline									
RMS	Spacing									
1000	.100									
1500	.125									
Insulation resistance.	5000 megohms minimum.	AMP Spec 109-28-4. Test between adjacent contacts of unmated connector assemblies.								

#### MECHANICAL

Vibration, random.	No discontinuities greater than 1 microsecond.	AMP Spec 109-21-5, Condition C. Subject mated connectors to 9 G's rms for 3 minutes. See Figure 4.
Physical shock.	No discontinuities greater than 1 microsecond.	AMP Spec 109-26-1. Subject mated connectors to 50 G's half-sine shock pulses of 11 milliseconds duration. 3 shocks in each direction applied along 3 mutually perpendicular planes, 18 total shocks. See Figure 4.

Figure 1 (cont)

Test Description	Requirement	Procedure
Mating force.	19 ounces maximum per contact pair.	AMP Spec 109-42, Condition A. Measure force necessary to mate connector with daughter card from point of initial contact using free floating fixtures at a rate of .5 inch per minute. Calculate force per contact.
Unmating force.	1.25 ounces minimum per contact pair.	AMP Spec 109-42, Condition A. Measure force necessary to unmate assemblies at a rate of .5 inch per minute. Calculate force per contact.
Contact retention.	Contact shall not dislodge from normal locking position.	AMP Spec 109-30. Apply axial load of 8 pounds to contacts.
Durability.	See Note.	AMP Spec 109-27. Mate and unmate connector assemblies using daughter card for 250 cycles for 30 min gold plating and 100 cycles for 15 min gold plating at maximum rate of 500 cycles per hour. See Figure 5.

**ENVIRONMENTAL**

Thermal shock.	See Note.	AMP Spec 109-22. Subject unmated connectors to 5 cycles between -55 and 85°C.
Humidity, steady state.	See Note.	AMP Spec 109-23-2. Subject unmated connectors to steady state humidity at 40°C and 90-95% RH for 4 days.
Mixed flowing gas.	See Note.	AMP Spec 109-85-2. Subject mated connectors to environmental class II for 14 days.
Temperature life.	See Note.	AMP Spec 109-43. Subject mated connectors to temperature life at 85°C for 500 hours.

**NOTE**

*Shall meet visual requirements, show no physical damage and shall meet requirements of additional tests as specified in Test Sequence in Figure 2.*

Figure 1 (end)

**3.6. Connector Qualification and Requalification Tests and Sequences**

Test or Examination	Test Group (a)			
	1	2	3	4
	Test Sequence (b)			
Examination of product	1,9	1,5	1,5	1,9
Termination resistance, dry circuit	3,7	2,4	2,4	
Dielectric withstanding voltage				4,8
Insulation resistance				3,7
Vibration	5			
Physical shock	6			
Mating force	2			
Unmating force	8			
Contact retention				2
Durability	4			
Thermal shock				5
Humidity, steady state				6
Mixed flowing gas			3(c)	
Temperature life		3(c)		

- NOTE**
- (a) See Para 4.1.A.
  - (b) Numbers indicate sequence in which tests are performed.
  - (c) Precondition with 5 cycles durability.

Figure 2

**4. QUALITY ASSURANCE PROVISIONS**

**4.1. Qualification Testing**

**A. Sample Selection**

Connector housings and contacts shall be prepared in accordance with applicable Instruction Sheets and shall be selected at random from current production. All test groups shall consist of 10 connectors of greatest number of positions available. 5 connectors from each of 2 different plating configurations. Test groups 1, 2 and 3 shall be soldered to printed circuit boards. Where individual contact measurements are required, a minimum of 30 randomly selected contacts distributed among the 5 connectors shall be measured.

**B. Test Sequence**

Qualification inspection shall be verified by testing samples as specified in Figure 2.

**4.2. Requalification Testing**

If changes significantly affecting form, fit or function are made to the product or manufacturing process, product assurance shall coordinate requalification testing, consisting of all or part of the original testing sequence as determined by development/product, quality and reliability engineering.

**4.3. Acceptance**

Acceptance is based on verification that the product meets the requirements of Figure 1. Failures attributed to equipment, test setup or operator deficiencies shall not disqualify the product. When product failure occurs, corrective action shall be taken and samples resubmitted for qualification. Testing to confirm corrective action is required before resubmittal.

**4.4. Quality Conformance Inspection**

The applicable AMP quality inspection plan will specify the sampling acceptable quality level to be used. Dimensional and functional requirements shall be in accordance with the applicable product drawing and this specification.

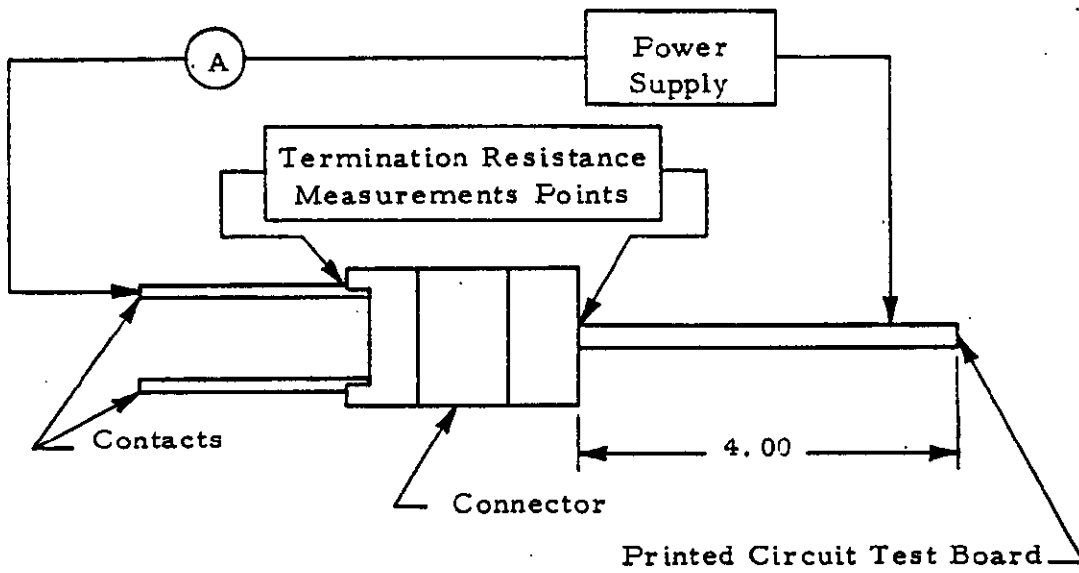


Figure 3  
Termination Resistance Measurement Points

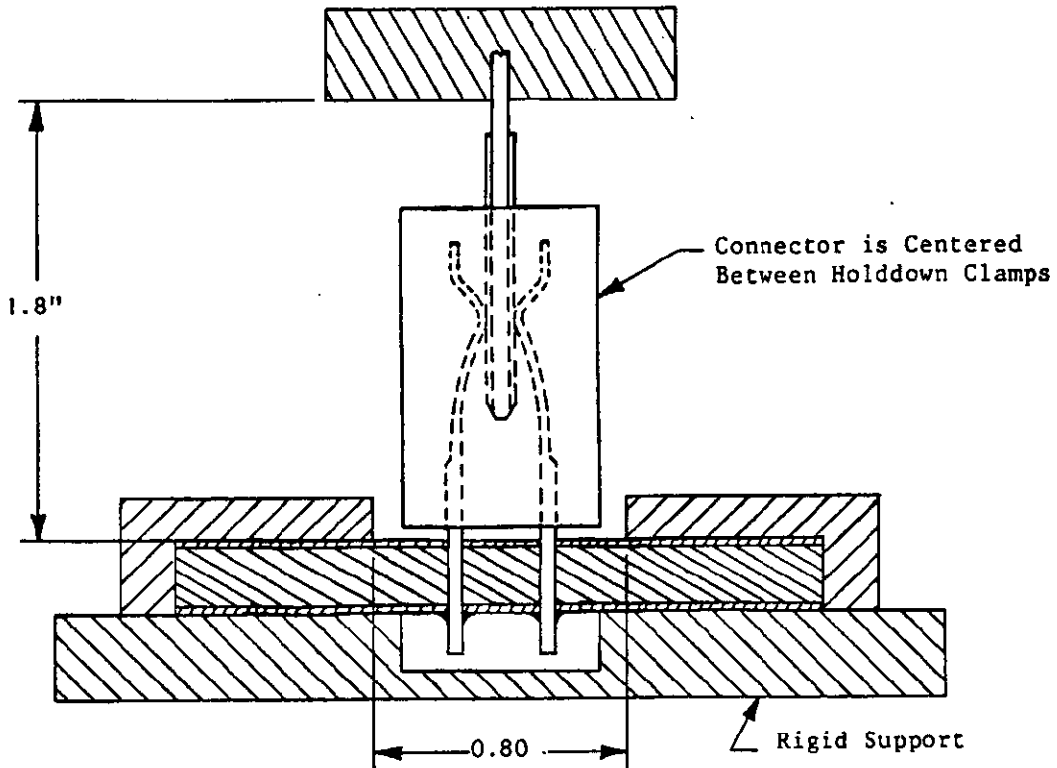
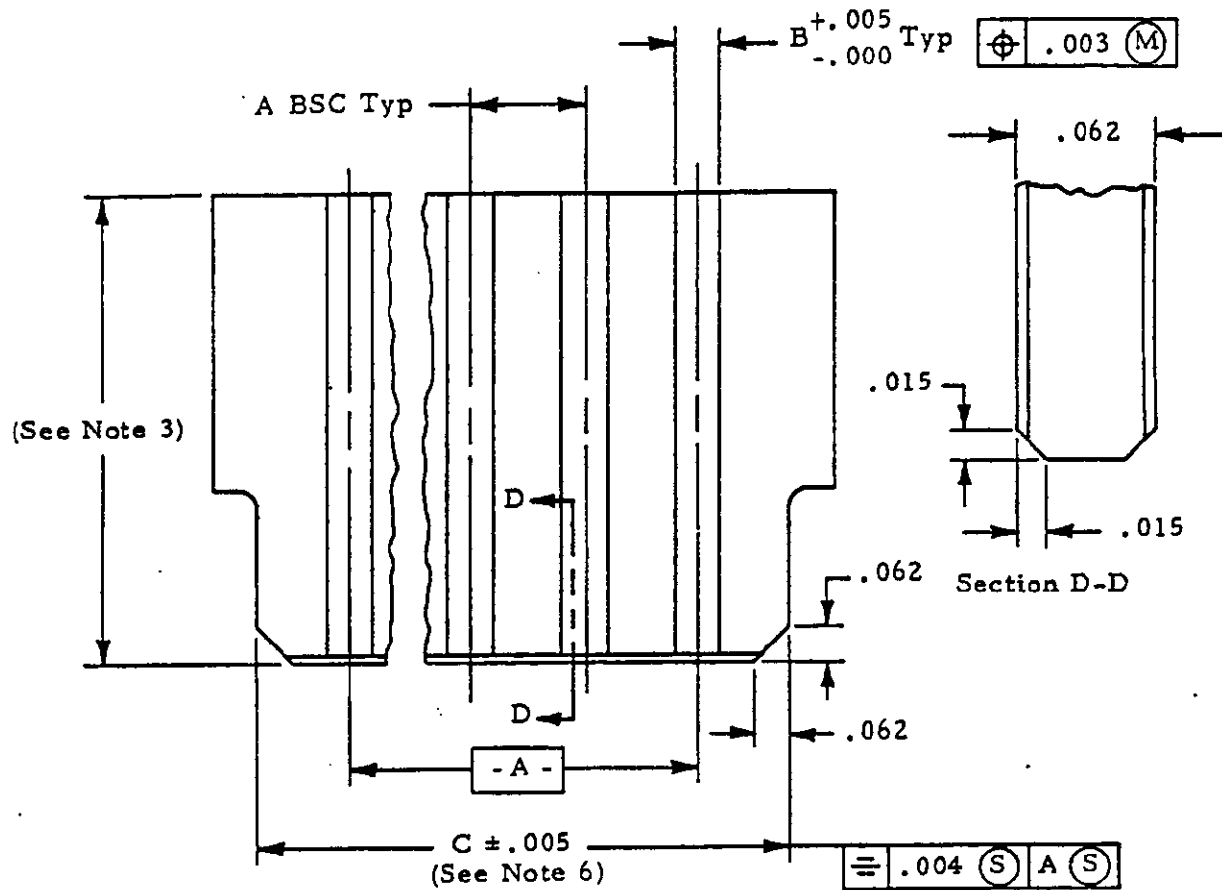


Figure 4  
Vibration & Physical Shock



Connector Contact Spacing	A BSC Dimension	B Dimension
.100	.100	.052
.125	.125	.078

- NOTE**
- (1) Dimensions are in inches.
  - (2) Unless otherwise specified, tolerance is  $\pm .005$ .
  - (3) Test card shall extend  $4.00 \pm .02$  from receptacle after insertion. See Figure 3.
  - (4) Number of contacts shall be same as on corresponding printed wiring connector.
  - (5) Printed circuit test board shall be 2 ounces copper and gold over nickel plating per MIL-STD-275.
  - (6) Dimension shall be minimum connector card slot length minus  $.008$ .
  - (7) Conductor configuration optional beyond card slot depth.
  - (8) Printed wiring shall be identical on both sides.

Figure 5  
Printed Circuit Board