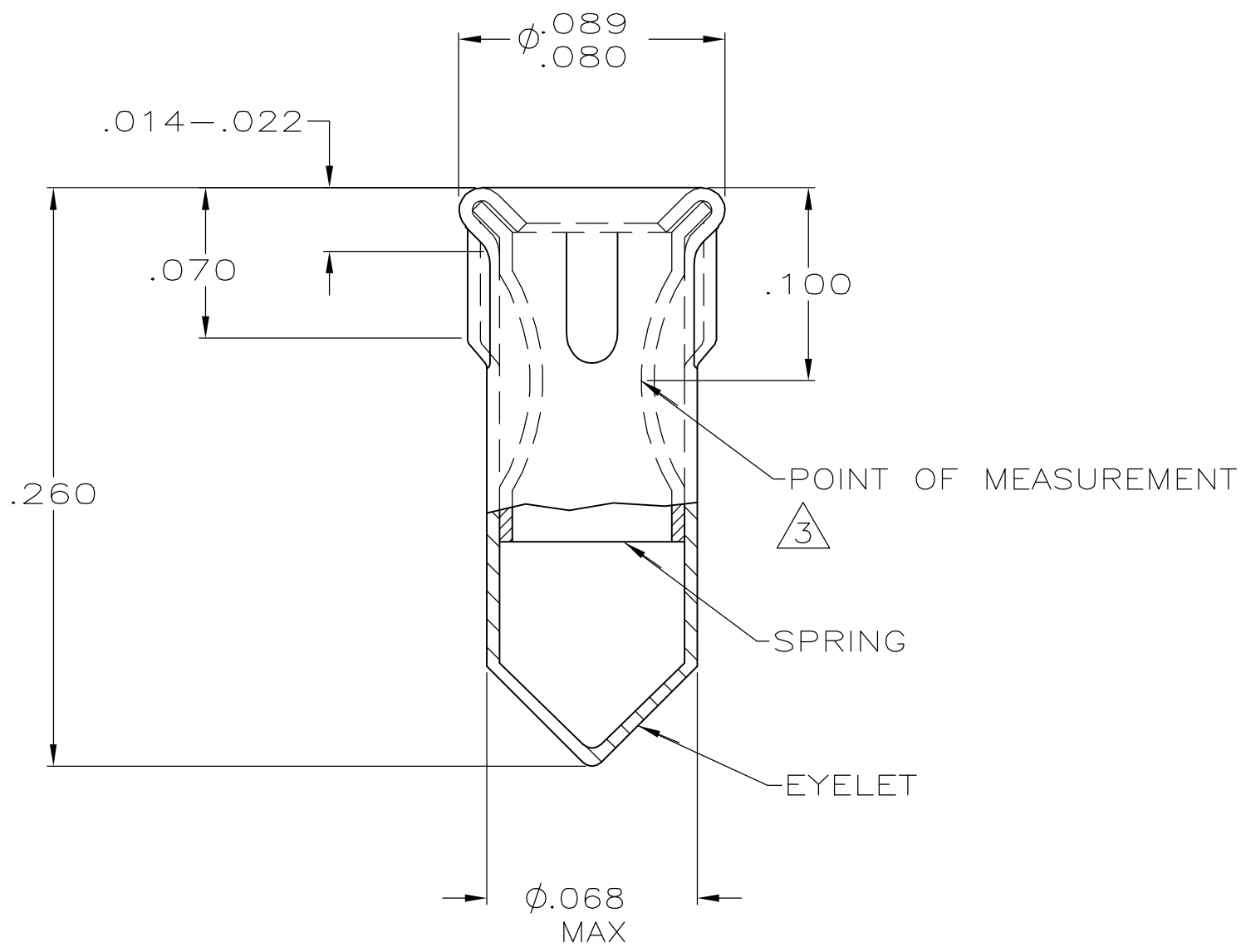
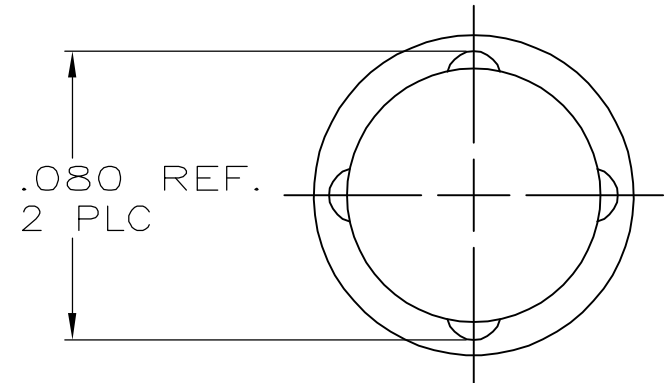


THIS DRAWING IS UNPUBLISHED. RELEASED FOR PUBLICATION
 © COPYRIGHT - BY TYCO ELECTRONICS CORPORATION. ALL RIGHTS RESERVED.

LOC	DIST	REVISIONS			
P	LTR	DESCRIPTION	DATE	DWN	APVD
AG	53	A	REVISED PER ECO-06-001742	31JAN06	JDP JGH



- 1 MATERIAL: EYELET-COPPER PER ASTM B 152
 SPRING-BERYLLIUM COPPER
 PER ASTM B 194
- 2 TIN PLATE PER ASTM B 545 .000100
 MIN THICK.
- 3 GOLD PLATE PER ASTM B 488 .000030
 MIN THICK.
- 4. RECOMMENDED HOLE SIZE FOR MACHINE
 INSERTION .069-.075.



.037-.041	.100-.210	2	2	5645500-2
		3		5645500-1
DIA	LENGTH	SPRING	EYELET	PART NUMBER
PIN		FINISH		

THIS DRAWING IS A CONTROLLED DOCUMENT.		DWN G. ATTADIA - 20APR2005 DOCK5	Tyco Electronics Corporation Harrisburg, PA 17105-3608		
DIMENSIONS: INCHES		CHK J. HAVENER 20APR2005	NAME		
TOLERANCES UNLESS OTHERWISE SPECIFIED:		APVD J. HAVENER 20APR2005	PRODUCT SPEC		
0 PLC ± - 1 PLC ± - 2 PLC ± - 3 PLC ± .010 4 PLC ± - ANGLES ± -		APPLICATION SPEC		SOCKET, MSS, SERIES 4	
MATERIAL	FINISH	WEIGHT	SIZE	CAGE CODE	DRAWING NO
1	SEE TABLE	-	A3	00779	C-5645500
CUSTOMER DRAWING			SCALE	SHEET	REV
			NTS	1 OF 1	A