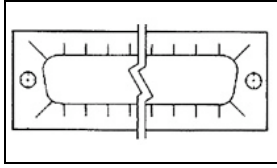


## 5747024-3 Product Details



**5747024-3**

TE Internal Number: 5747024-3



Active

### Hardware (AMPLIMITE)

 Always EU RoHS/ELV Compliant (Statement of Compliance)

#### Product Highlights:

- Accessory Type = EMI/RFI Gasket
- 9 Positions
- Shell Size = 1
- Packaging Method = Individual
- RoHS compliant, ELV compliant

### Documentation & Additional Information

#### Product Drawings:

- [RFI GASKET, SIZE 1, AMPLIMITE](#) (PDF, English)

#### Catalog Pages/Data Sheets:

- [AMPLIMITE Subminiature D Connectors - Cable Connectors](#) (PDF, English)

#### Product Specifications:

- None Available

#### Application Specifications:

- None Available

#### Instruction Sheets:

- None Available

#### CAD Files:

- None Available

#### Additional Information:

- [Product Line Information](#)

#### Related Products:

- [Tooling](#)

### Product Features (Please use the Product Drawing for all design activity)

#### Product Type Features:

- [Accessory Type](#) = EMI/RFI Gasket
- [Shell Size](#) = 1

#### Body Features:

- Body Plating = Bright Tin
- Body Material = Brass

#### Configuration Features:

- [Number of Positions](#) = 9

#### Industry Standards:

- [Government/Industry Qualification](#) = No
- [RoHS/ELV Compliance](#) = RoHS compliant, ELV compliant
- [Lead Free Solder Processes](#) = Not relevant for lead free process
- [RoHS/ELV Compliance History](#) = Always was RoHS compliant

#### Packaging Features:

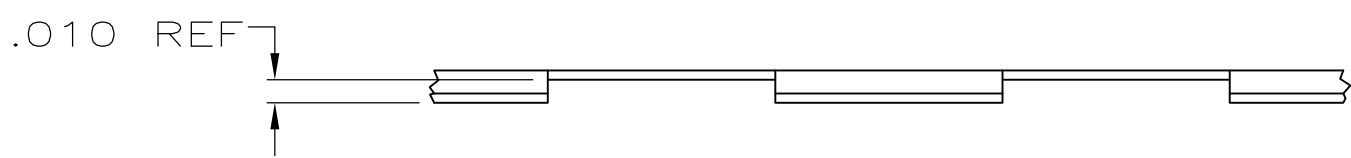
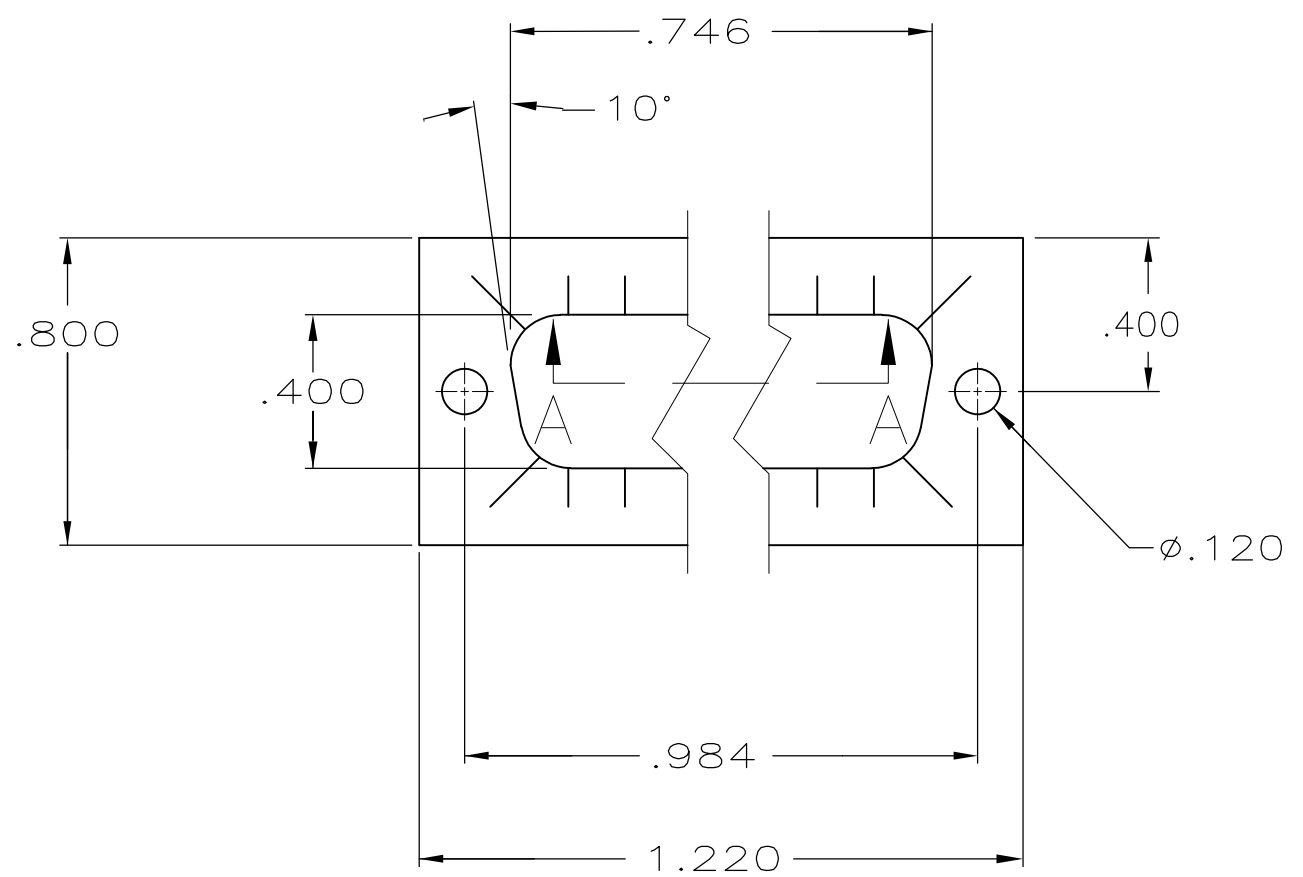
- [Packaging Method](#) = Individual

#### Other:

- Brand = AMP


THIS DRAWING IS UNPUBLISHED. RELEASED FOR PUBLICATION  
 © COPYRIGHT - By - ALL RIGHTS RESERVED.

LOC	DIST	REVISIONS					
GP	00	P	LTR	DESCRIPTION	DATE	DWN	APVD
			A1	REVISED PER ECO-11-004835	11MAR11	RK	HMR



VIEW A-A  
SCALE 8:1

5747024-3  
PART NO

THIS DRAWING IS A CONTROLLED DOCUMENT.		DWN	B. MCMASTER	24MAY04	 TE Connectivity NAME RFI GASKET, SIZE 1, AMPLIMITE							
DIMENSIONS: INCHES		CHK	J. GERACE	24MAY04								
TOLERANCES UNLESS OTHERWISE SPECIFIED:		APVD	M. WALMSLEY	24MAY04								
0 PLC ± - 1 PLC ± - 2 PLC ± - 3 PLC ± .010 4 PLC ± - ANGLES ± 2°		PRODUCT SPEC	-									
MATERIAL: BRASS, .006 THICK		FINISH	TIN OVER NICKEL		APPLICATION SPEC	-						
		WEIGHT	-		SIZE	A3	CAGE CODE	00779	DRAWING NO	C-5747024	RESTRICTED TO	-
CUSTOMER DRAWING					SCALE	2:1		SHEET	1 OF 1		REV	A1