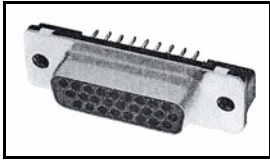


## 5748831-1 Product Details

[Share](#) [Print](#) [Email](#)




**5748831-1**

TE Internal Number: 5748831-1

 Active

[View 3D PDF](#)

### Standard Board Mount Connectors

 Always EU RoHS/ELV Compliant  
(Statement of Compliance)

### Product Highlights:

- 78 Positions
- Connector Style = Receptacle
- PCB Mounting Orientation = Vertical
- Product Series = HD-22
- With Mating Connector Lock

[View all Features](#)

### Quick Links

- ▶ [Pricing & Availability](#)
- ▶ [Search for Tooling](#)
- ▶ [Product Feature Selector](#)
- ▶ [Contact Us About This Product](#)

[Add to My Part List](#)

[Request Sample](#)

[Find Similar Products](#)

[Buy Product](#)

### Documentation & Additional Information

#### Product Drawings:

- [AMPLIMITE HD-22 78 POS RECEPTACLE, VERTICAL](#) (PDF, English)

#### Catalog Pages/Data Sheets:

- [AMPLIMITE Subminiature D Connectors - Straight Poste...](#) (PDF, English)

#### Product Specifications:

- [AMPLIMITE\\* HD-22 Front Metal Shell, PCB Mounted Conn...](#) (PDF, English)

#### Application Specifications:

- [AMPLIMITE HD-22 Straight Front Metal Shell Connectors](#) (PDF, English)

#### Instruction Sheets:

- None Available

#### CAD Files: (CAD Format & Compression Information)

- [2D Drawing](#) (DXF, Version A)
- [3D Model](#) (IGES, Version A)
- [3D Model](#) (STEP, Version A)

[List all Documents](#)

#### Additional Information:

- [Product Line Information](#)

#### Additional Product Images:

- [Product Photo](#)

#### Related Products:

- [Tooling](#)

### Product Features (Please use the Product Drawing for all design activity)

#### Product Type Features:

- PCB Mounting Orientation = Vertical
- Product Series = HD-22
- Mating Connector Lock = With
- Mating Connector Lock Type = Threaded Insert, 4-40 UNC
- PCB Mount Retention = Without
- Shell Type = Front Metal Shell
- Shell Size = 5
- Grounding Indents = Without
- Grounding Straps = Without
- PCB Mount Style = Through Hole
- Color Code = None
- Sealed = No
- Post Size (mm [in]) = 0.66 [.026]

#### Contact Features:

- Contact Plating, Mating Area, Material = Gold (30)
- Solder Tail Contact Plating = Tin over Nickel
- Contact Shape = Round
- Contact Base Material = Phosphor Bronze

#### Housing Features:

- Connector Style = Receptacle
- UL Flammability Rating = UL 94V-0
- Housing Material = Thermoplastic - GF

#### Configuration Features:

- Number of Positions = 78

#### Industry Standards:

- RoHS/ELV Compliance = RoHS compliant, ELV compliant

<p><b>Mechanical Attachment:</b></p> <ul style="list-style-type: none"> <li>Panel Mount Retention = Without</li> </ul> <p><b>Termination Features:</b></p> <ul style="list-style-type: none"> <li>Grounding Clips = Without</li> <li>Termination Post Length (mm [in]) = 3.18 [0.125]</li> </ul> <p><b>Dimensions:</b></p> <ul style="list-style-type: none"> <li>PCB Thickness, Recommended (in [mm]) = 0.093 [2.36]</li> </ul> <p><b>Body Features:</b></p> <ul style="list-style-type: none"> <li>Shell Material = Steel</li> <li>Shell Plating = Nickel</li> </ul>	<ul style="list-style-type: none"> <li>Lead Free Solder Processes = Wave solder capable to 260°C, Wave solder capable to 240°C, Wave solder capable to 265°C</li> <li>RoHS/ELV Compliance History = Always was RoHS compliant</li> </ul> <p><b>Operation/Application:</b></p> <ul style="list-style-type: none"> <li>Application = Standard</li> </ul> <p><b>Other:</b></p> <ul style="list-style-type: none"> <li>Brand = AMP</li> <li>Comment = All connectors are preloaded with size 22 DF posted contacts</li> </ul>
--	---

### Corporate Information

- [About TE](#)
- [Investors](#)
- [News Room](#)
- [Supplier Portal](#)
- [Careers](#)
- [Terms & Conditions](#)
- [Privacy Policy](#)

### Quick Links

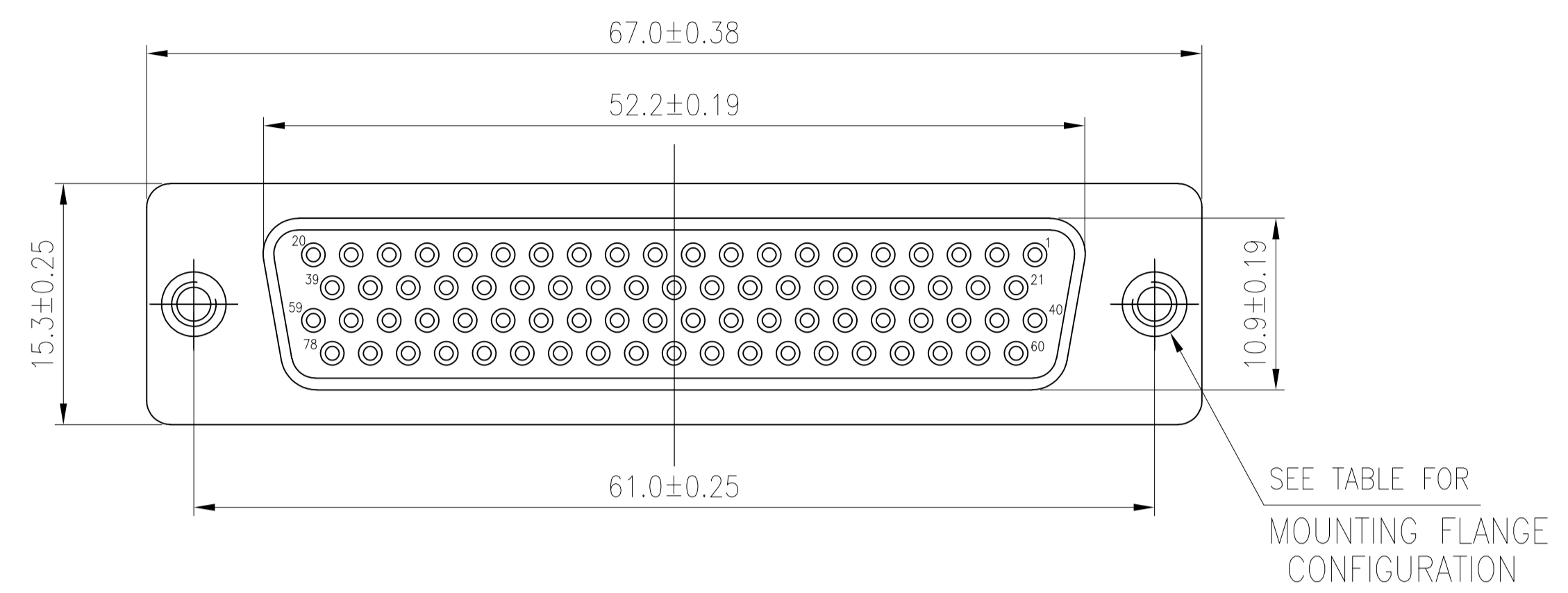
- [Distributor Inventory](#)
- [Product Cross Reference](#)
- [Documents & Drawings](#)
- [Product Compliance Support Center](#)
- [Site Map](#)

### Customer Support

- [Email or Chat With Us](#)
- [Find a Phone Number](#)
- [Knowledge Base](#)
- [Manage Your Account](#)

### Keep Me Informed



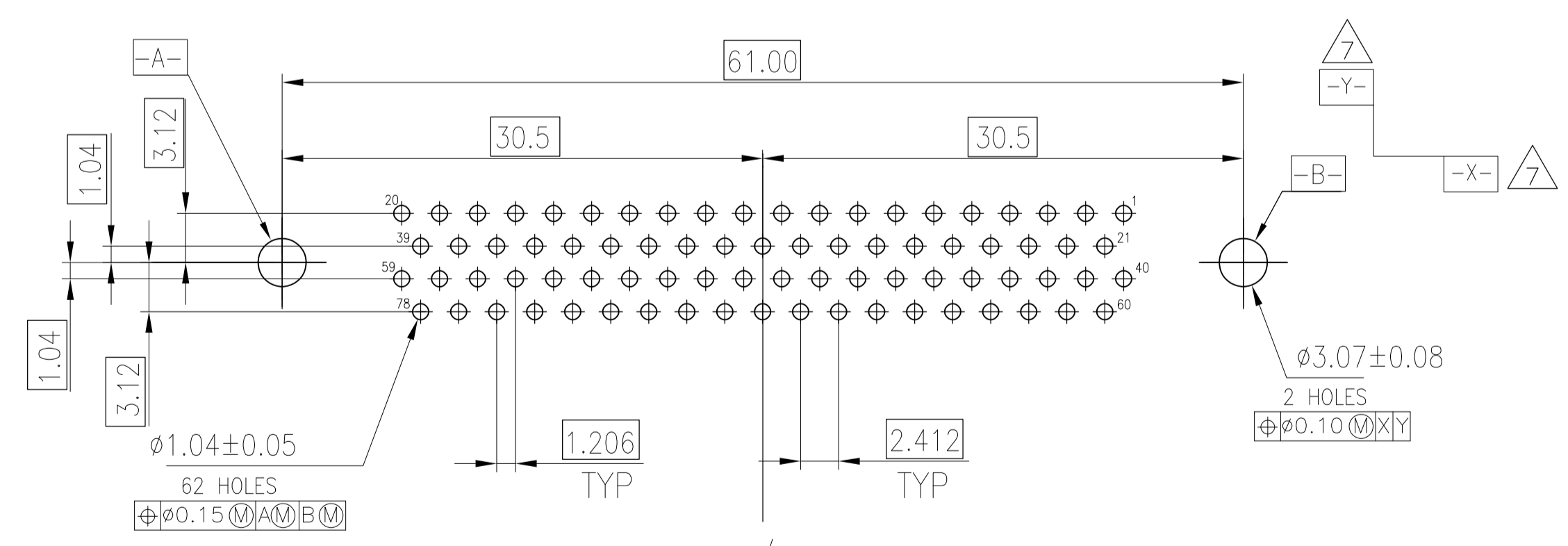
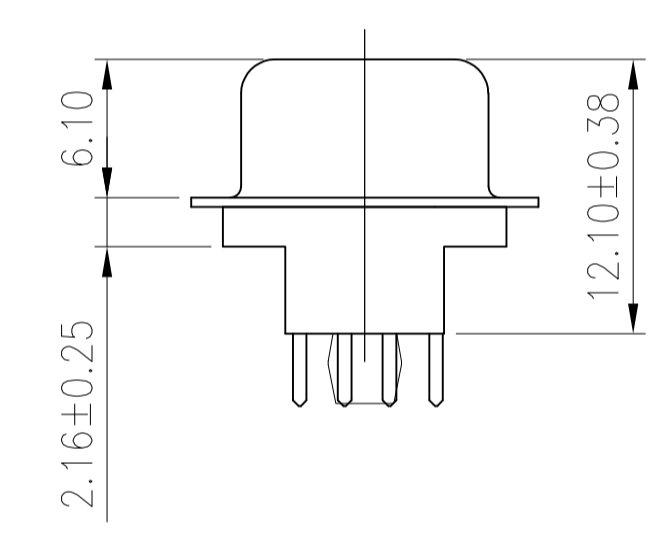
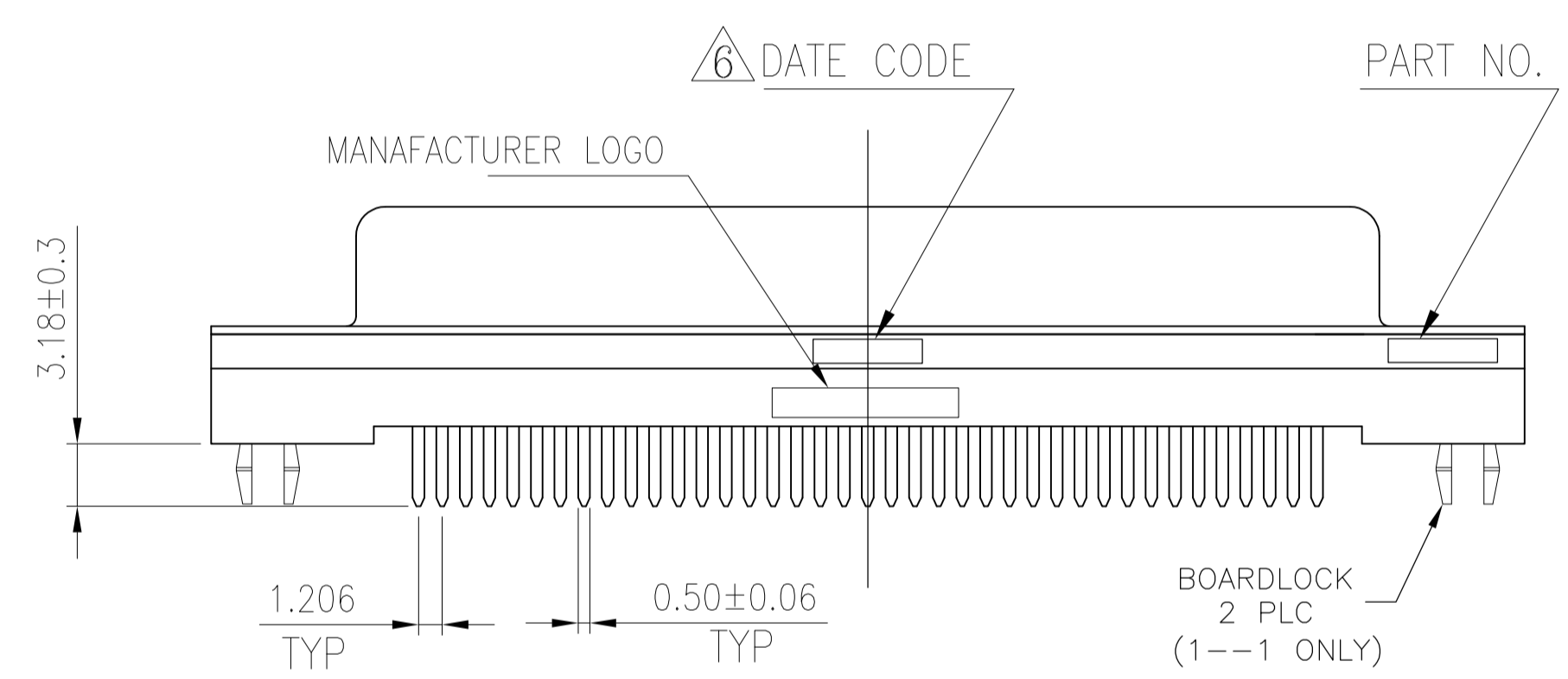


- HOUSING MATERIAL: PBT, GLASS FILLED, BLACK, UL 94V-0 RATED.
- CONTACT MATERIAL: PHOSPHOR BRONZE.
- CONTACT FINISH: GOLD PLATE IN MATING AREA (SEE TABLE), 120μ" MIN TIN PLATE ON SOLDER TAIL, BOTH OVER 50μ" MIN NICKEL UNDERPLATE.
- THREADED INSERTS AND BOARDLOCKS: BRASS, 100u" MIN TIN PLATE OVER 50u" MIN NICKEL UNDERPLATE.
- FEMALE SCREWLOCKS: BRASS, 50u" MIN NICKEL PLATE OVER 50u" MIN COPPER UNDERPLATE.

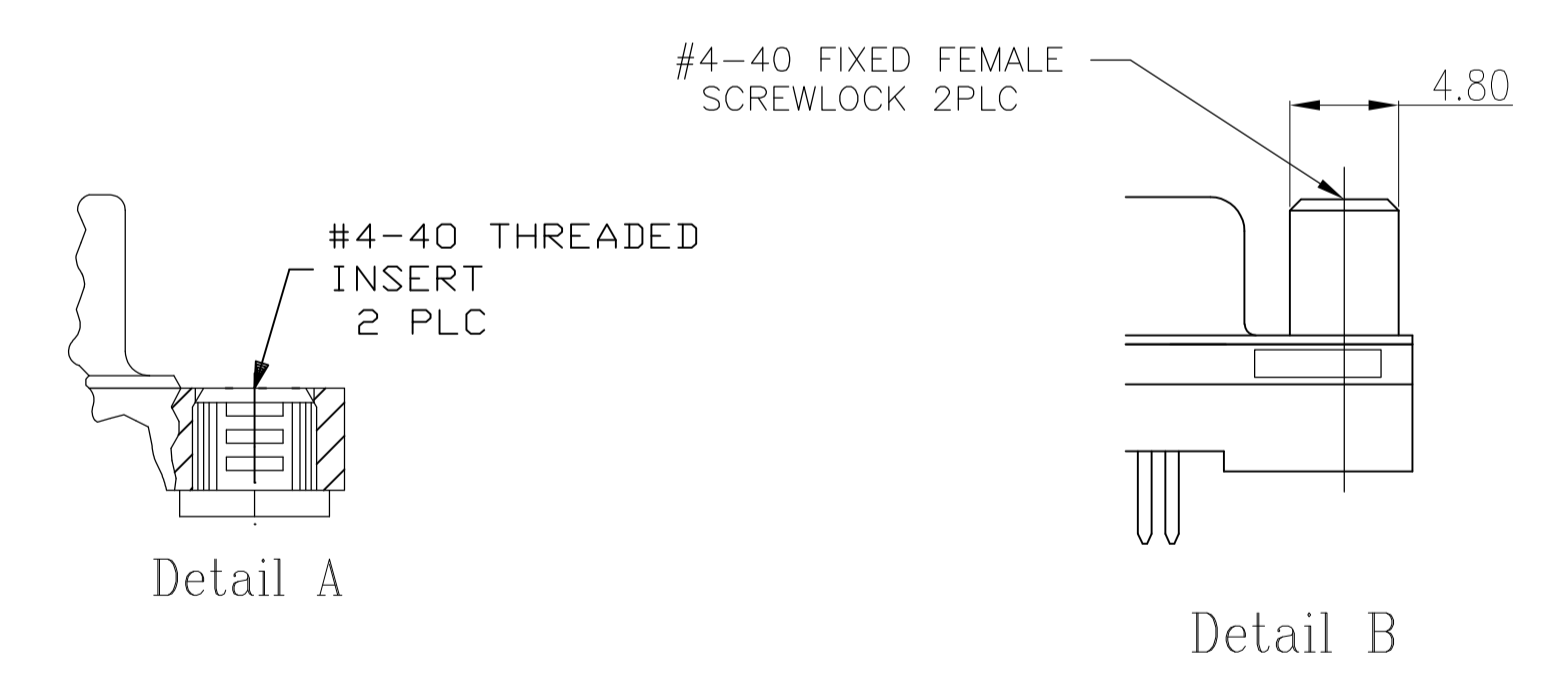
△6 Four digit date code in this format.

01	45
Year	Manufacturing Week

△7 DATUMS [-X-] & [-Y-] TO BE ESTABLISHED BY CUSTOMER.



RECOMMENDED PCB LAYOUT



	YES	Tray	Detail B	30μ" MIN	1-5748831-1
OBSOLETE	NO	Tray	Detail A	Gold flash	1-5748831-0
OBSOLETE	NO	Tray	Detail A	15μ" MIN	5748831-9
	NO	Tray	Detail A	30μ" MIN	5748831-1
BOARDLOCKS	Packaging	Mounting Flange Configuration	Contact Mating Area Finish	Part NO.	

THIS DRAWING IS A CONTROLLED DOCUMENT.

DIMENSIONS: mm	TOLERANCES UNLESS OTHERWISE SPECIFIED:	DIN B1 MCMMASTER 21SEP05	TE Connectivity
	0 PLC ± -	CIK S. BOLASH 21SEP05	
	1 PLC ± 0.30	APVD M. WALMSLEY 21SEP05	NAME AMPLIMITE HD-22
	2 PLC ± 0.20		PRODUCT SPEC 78 POS RECEPTACLE, VERTICAL
	3 PLC ± 0.10		APPLICATION SPEC
	4 PLC ± ± Z'		SIZE CAGE CODE DRAWING NO
MATERIAL	FINISH	WEIGHT	A1 00779 C=5748831
		CUSTOMER DRAWING	SCALE 3:1 SHEET 1 OF 1 REV B1