



Have a Question?
 Chat with a Product
 Information Specialist

What can we help you find?

[Products](#) |
 [Industries](#) |
 [Resources](#) |
 [About TE](#) |
 [My Account](#) |
 [Innovation](#) |
 [Support Center](#)

5749621-7 Product Details

[Share](#) |
 [Print](#) |
 [Email](#)



5749621-7

TE Internal Number: 5749621-7

Active

View 3D PDF

.050 Series Cable Connectors (SCSI)

Always EU RoHS/ELV Compliant (Statement of Compliance)

Product Highlights:

- Connector
- Connector Style = Plug
- 68 Positions
- Wire/Cable Type = Round Jacketed Cable
- Applies To Cable

[View all Features](#)

Quick Links

- ▶ [Pricing & Availability](#)
- ▶ [Search for Tooling](#)
- ▶ [View Mating Products \(17\)](#)
- ▶ [View Accessories \(2\)](#)
- ▶ [Product Feature Selector](#)
- ▶ [Contact Us About This Product](#)

[Add to My Part List](#) |
 [Request Sample](#) |
 [Find Similar Products](#) |
 [Buy Product](#)

Documentation & Additional Information

Product Drawings:

- [KIT, PLUG ASSEMBLY, 1.27\[.050\] SERIES, AMPLIMITE](#) (PDF, English)

Catalog Pages/Data Sheets:

- [AMPLIMITE Subminiature D Connectors - .050 Series Co...](#) (PDF, English)

Product Specifications:

- [Connector, AMPLIMITE, Shielded, .050 Series](#) (PDF, English)

Application Specifications:

- [AMPLIMITE .050 Series Cable End Insulation Displacem...](#) (PDF, English)

Instruction Sheets:

- [Manual Arbor Frame Assembly 58024-1](#) (PDF, English)
- [Repair Tool 58430-1 for AMPLIMITE .050 Series Connectors](#) (PDF, English)
- [AMPLIMITE .050 Series Connectors \(Round-to-Flat Cable\)](#) (PDF, English)
- [Installation and Use of Mass Termination Tooling](#) (PDF, English)
- [Cover Lacing Fixture 91293-1 for AMPLIMITE .050 Seri...](#) (PDF, English)
- [Manual Miniature Applicator Frame Assembly 91295-1](#) (PDF, English)
- [Cover Closing Kits 543508-1 and 543526-1 and Staple ...](#) (PDF, English)
- [Tooling Kit 768900-1](#) (PDF, English)

CAD Files: (CAD Format & Compression Information)

- [2D Drawing \(DXF, Version O1\)](#)
- [3D Model \(IGES, Version O1\)](#)
- [3D Model \(STEP, Version O1\)](#)

[List all Documents](#)

Related Products:

- [Tooling](#)
- [Mating Products \(17\)](#)
- [Accessories \(2\)](#)

Product Features (Please use the Product Drawing for all design activity)

Product Type Features:

- **Product Type** = Connector
- **Wire/Cable Type** = Round Jacketed Cable
- **Wire Insulation Diameter (mm [in])** = 0.74 - 0.91 [0.029 - 0.036]
- **Mating Connector Lock** = Without
- **Detent** = Without
- **Rails** = Without
- **Termination Cover** = With
- **Product Series** = Series III
- **Termination Method to Wire/Cable** = Insulation Displacement Crimp (IDC)
- **Termination Cover Type** = Standard
- **Termination Cover Method** = Unassembled
- **Color** = Black

Mechanical Attachment:

- **Panel Mount Retention** = Without

Electrical Characteristics:

- **Shielded** = Yes

Termination Features:

- **Solder Tail Contact Plating** = Tin over Nickel

Contact Features:

- **Contact Base Material** = Phosphor Bronze
- **Contact Plating, Mating Area, Material** = Gold Flash over Palladium Nickel, Gold (30)

Housing Features:

- **Connector Style** = Plug
- **Housing Material** = Thermoplastic - GF
- **UL Flammability Rating** = UL 94V-0

Configuration Features:

- **Number of Positions** = 68

Industry Standards:

- **RoHS/ELV Compliance** = RoHS compliant, ELV compliant
- **Lead Free Solder Processes** = Not relevant for lead free process
- **RoHS/ELV Compliance History** = Always was RoHS compliant

Conditions for Usage:

- **Applies To** = Cable

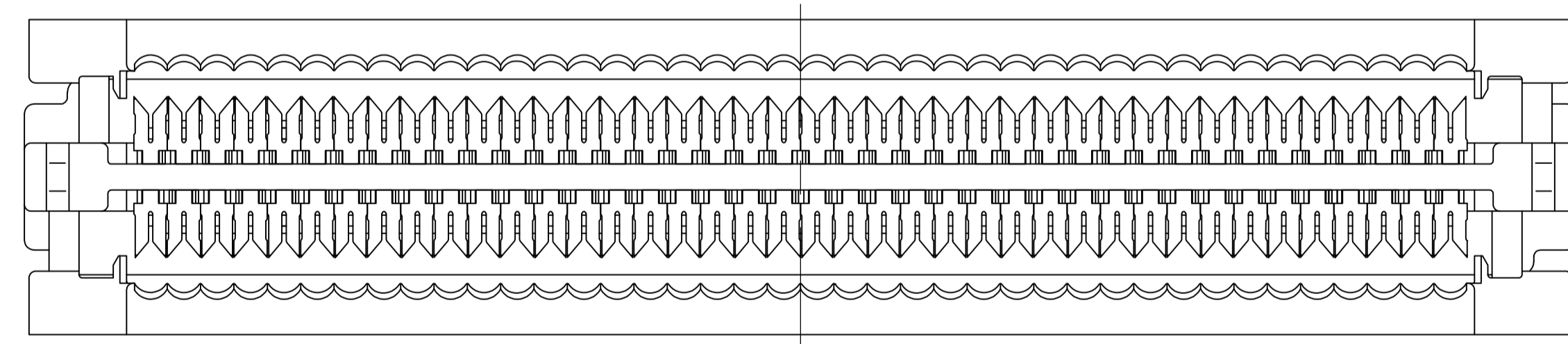
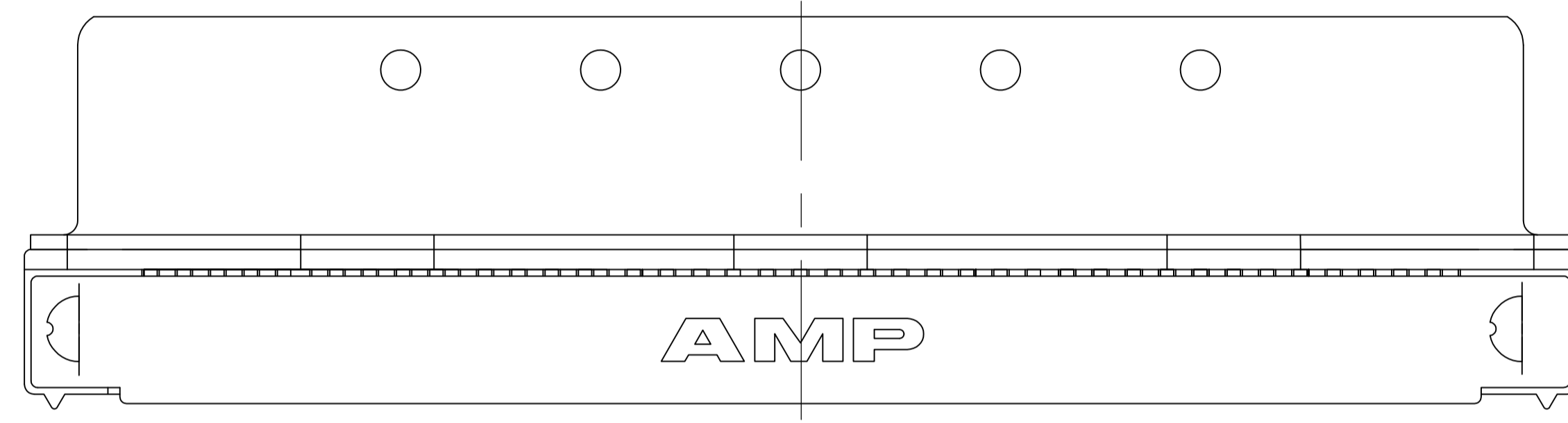
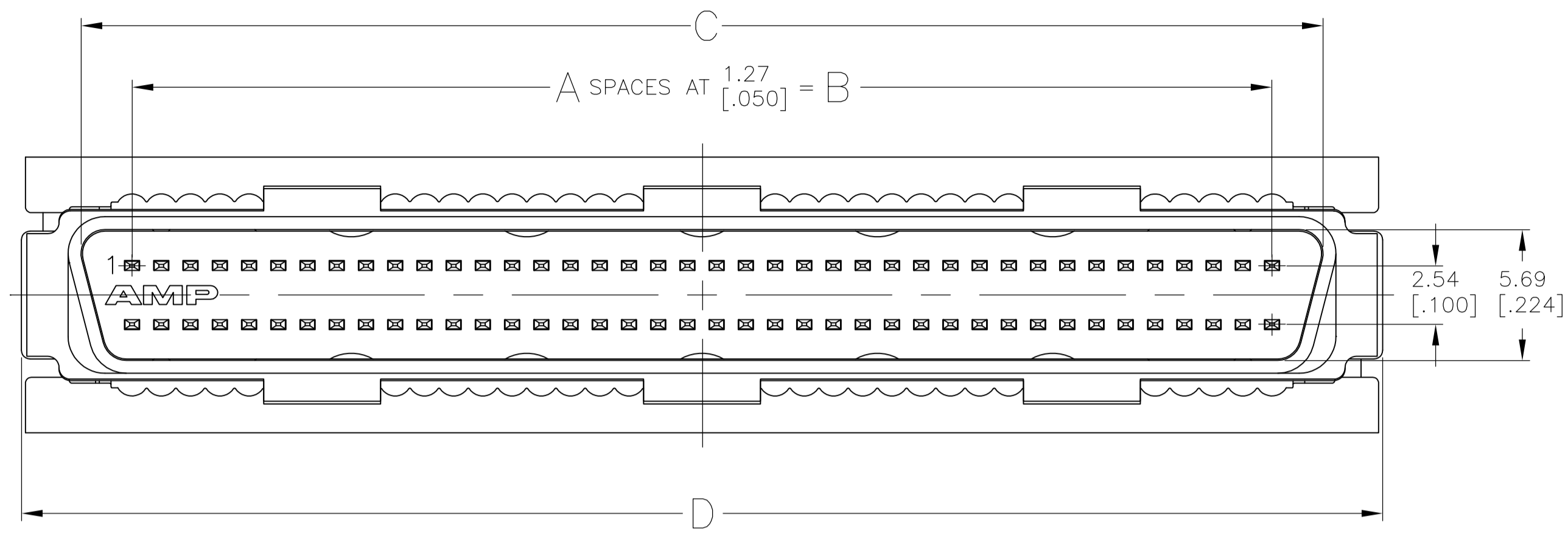
Other:

- **Brand** = AMP
- **Comment** = Plug connector requires backshell kit for complete

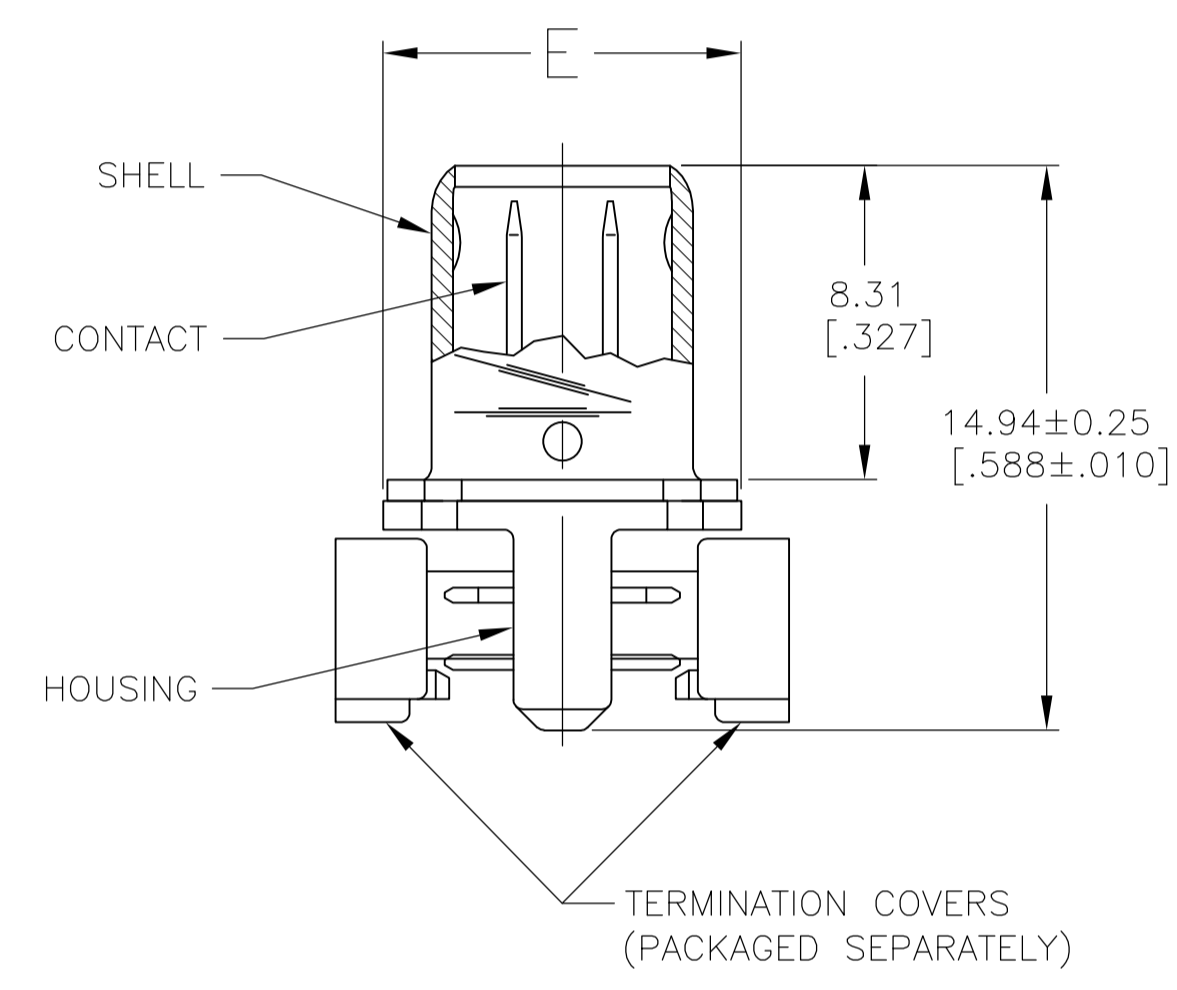
Body Features:

- Wire Range (mm [AWG]) = 0.05-0.092 [30-28]
- Plug Shell Material = Steel
- Plug Shell Plating = Tin-Nickel Alloy

assembly



- 1 HOUSING AND TERMINATION COVERS: THERMOPLASTIC, UL94V-0 RATED, COLOR BLACK.
SHELL: STEEL.
PIN CONTACTS: PHOSPHOR BRONZE.
- 2 2.54µm [.000100] MIN TIN-NICKEL OVER 3.81µm [.000150] MIN NICKEL OVER 2.54µm [.000100] MIN COPPER.
- 3 5.08µm [.000200] MIN TIN OVER 1.27µm [.000050] MIN COPPER. LUBRICATED AFTER PLATING.
- 4 EITHER 0.76µm [.000030] MIN GOLD PLATE OR GOLD FLASH OVER PALLADIUM NICKEL PLATE, 0.76µm [.000030] MIN TOTAL IN LOCALIZED PLATE AREA, 3.00µm [.000118] MIN TIN IN TERMINATION AREA, ALL OVER 1.27µm [.000050] MIN NICKEL.
5. RECOMMENDED WIRE: 28 AWG OR 30 AWG, SOLID OR 7 STRAND, PVC INSULATION WITH A 0.74 - 0.91 [.029 - .036] INSULATION DIAMETER.



SUPERCEDED BY 5749621-9	9.47 [.373]	71.86 [2.829]	66.60 [2.622]	62.23 [2.450]	49	4	2	100	1-5749621-8
SUPERCEDED BY 5749621-5	7.44 [.293]	40.11 [1.579]	34.85 [1.372]	30.48 [1.200]	24	4	2	50	1-5749621-7
SUPERCEDED BY 5749621-7	7.44 [.293]	51.54 [2.029]	46.28 [1.822]	41.91 [1.650]	33	4	3	68	1-5749621-6
	9.47 [.373]	84.54 [3.329]	79.31 [3.122]	74.93 [2.950]	59	4	2	120	1-5749621-0
	9.47 [.373]	71.86 [2.829]	66.60 [2.622]	62.23 [2.450]	49	4	2	100	5749621-9
	9.47 [.373]	59.16 [2.329]	53.90 [2.122]	49.53 [1.950]	39	4	2	80	5749621-8
	7.44 [.293]	51.54 [2.029]	46.28 [1.822]	41.91 [1.650]	33	4	2	68	5749621-7
	7.44 [.293]	40.11 [1.579]	34.85 [1.372]	30.48 [1.200]	24	4	2	50	5749621-5
	7.44 [.293]	33.76 [1.329]	28.50 [1.122]	24.13 [.950]	19	4	2	40	5749621-4
	7.44 [.293]	26.14 [1.029]	20.88 [.822]	16.51 [.650]	13	4	2	28	5749621-3
	7.44 [.293]	24.87 [.979]	19.61 [.772]	15.24 [.600]	12	4	2	26	5749621-2
	7.44 [.293]	21.06 [.829]	15.80 [.622]	11.43 [.450]	9	4	2	20	5749621-1
	E	D	C	B	A	CONTACT FINISH	SHELL FINISH	NO OF POS	PART NUMBER

**COPYRIGHT 2005
TE CONNECTIVITY CORP
ALL RIGHTS RESERVED**

THIS DRAWING IS A CONTROLLED DOCUMENT.

DIMENSIONS: INCHES	TOLERANCES UNLESS OTHERWISE SPECIFIED:	DIN J. GERACE 17FEB05	TE Connectivity
0 PLC ± -	1 PLC ± -	17FEB05	
2 PLC ± 0.13[.005]	3 PLC ± -	APVD M. WALMSLEY 17FEB05	NAME
4 PLC ± -	ANGLES ± -	PRODUCT SPEC	KIT, PLUG ASSEMBLY, 1.27[.050] SERIES, AMPLIMITE
MATERIAL	FINISH	APPLICATION SPEC	SIZE
	SEE TABLE	114-40029	CAGE CODE
		WEIGHT	DRAWING NO
			00779
		CUSTOMER DRAWING	SCALE 5:1
			SHEET 1 OF 1
			REV D1