

## 5750678-1 Product Details




5750678-1

TE Internal Number: 5750678-1

 Active

### Standard Board Mount Connectors

 Always EU RoHS/ELV Compliant  
(Statement of Compliance)

### Product Highlights:

- 9 Positions
- Connector Style = Receptacle
- PCB Mounting Orientation = Vertical
- Product Series = HD 20
- Without Mating Connector Lock

## Documentation & Additional Information

### Product Drawings:

- [RECEPTACLE ASSEMBLY, SIZE 1, 9 POSN, VERTICAL, FRONT...](#) (PDF, English)

### Catalog Pages/Data Sheets:

- [AMPLIMITE Subminiature D Connectors - Straight Poste...](#) (PDF, English)

### Product Specifications:

- [AMPLIMITE HD-20 PCB Mounted Connector](#) (PDF, English)

### Application Specifications:

- [AMPLIMITE HD-20 Straight Solder Contact Tine, Front ...](#) (PDF, English)

### Instruction Sheets:

- None Available

### CAD Files: (CAD Format & Compression Information)

- [2D Drawing](#) (DXF, Version A)
- [3D Model](#) (IGES, Version A)
- [3D Model](#) (STEP, Version A)

### Additional Information:

- [Product Line Information](#)

### Related Products:

- [Tooling](#)
- [Mating Products](#) (8)

## Product Features (Please use the Product Drawing for all design activity)

### Product Type Features:

- [PCB Mounting Orientation](#) = Vertical
- [Product Series](#) = HD 20
- [Mating Connector Lock](#) = Without
- [PCB Mount Retention](#) = With
- [PCB Mount Retention Type](#) = 4-40 Retention Screwlocks
- [Shell Type](#) = Front Metal Shell
- [Shell Size](#) = 1
- [Grounding Indents](#) = Without
- [Grounding Straps](#) = Without
- [PCB Mount Style](#) = Through Hole
- [Color Code](#) = None
- Sealed = No
- Profile = Standard
- Post Size (mm [in]) = 0.66 [.026]
- Mounting Hole Diameter (mm [in]) = 3.07 [.121]
- Shell Material = Steel

### Mechanical Attachment:

- [Panel Mount Retention](#) = Without

### Termination Features:

### Body Features:

- [Shell Plating](#) = Tin
- [Female Screwlock Material](#) = Zinc

### Contact Features:

- [Contact Plating, Mating Area, Material](#) = Gold (30)
- [Contact Shape](#) = Round
- [Contact Base Material](#) = Phosphor Bronze

### Housing Features:

- [Connector Style](#) = Receptacle
- [UL Flammability Rating](#) = UL 94V-0
- [Housing Material](#) = Thermoplastic - GF

### Configuration Features:

- [Number of Positions](#) = 9

### Industry Standards:

- [RoHS/ELV Compliance](#) = RoHS compliant, ELV compliant
- [Lead Free Solder Processes](#) = Wave solder capable to 240°C, Wave solder capable to 260°C, Wave solder capable to 265°C
- [RoHS/ELV Compliance History](#) = Always was RoHS

- Grounding Clips = Without
- Termination Post Length (mm [in]) = 3.18 [0.125]
- Solder Tail Contact Plating = Tin over Nickel

**Dimensions:**

- PCB Thickness, Recommended (in [mm]) = 0.062 [1.57]

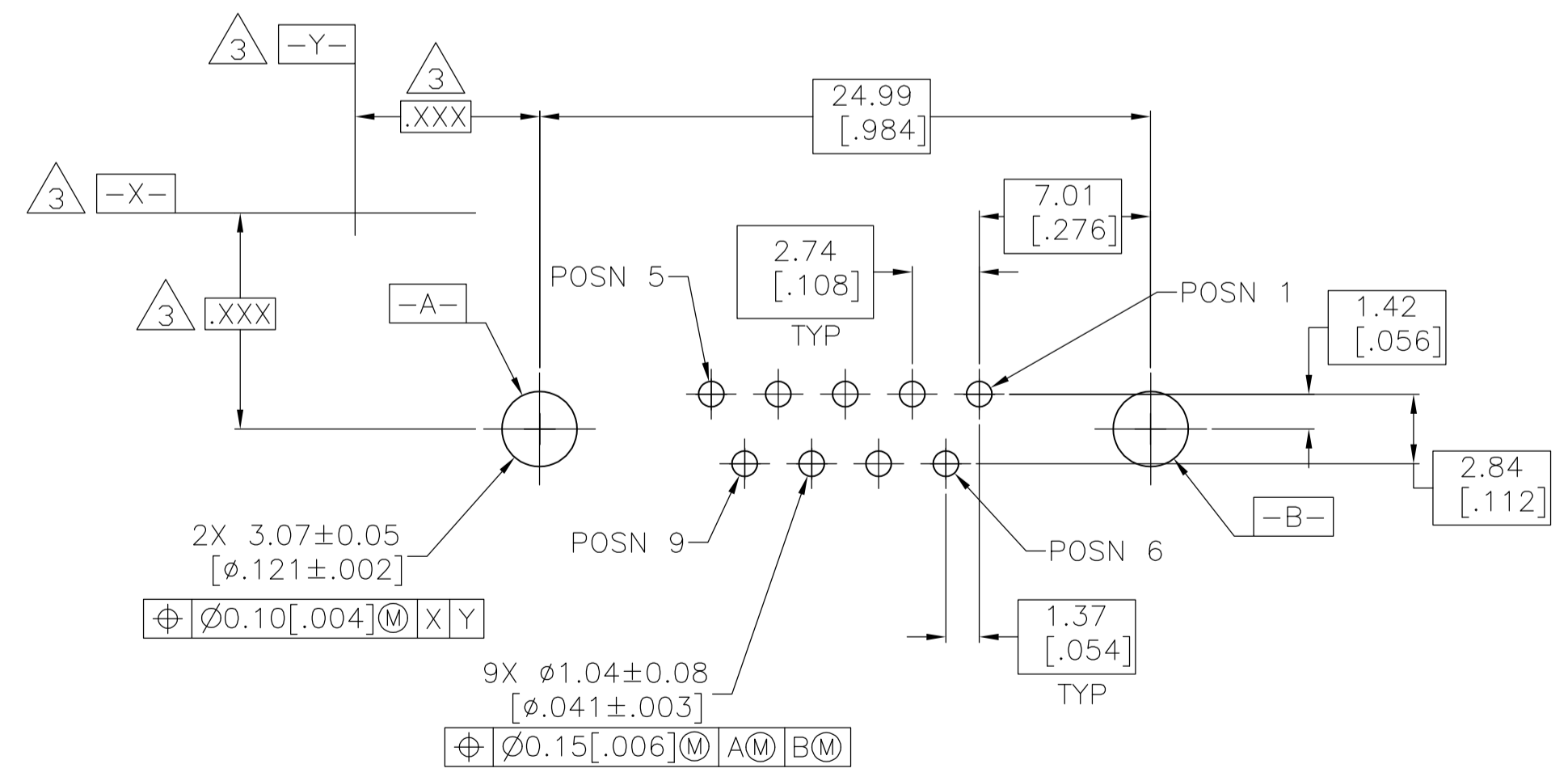
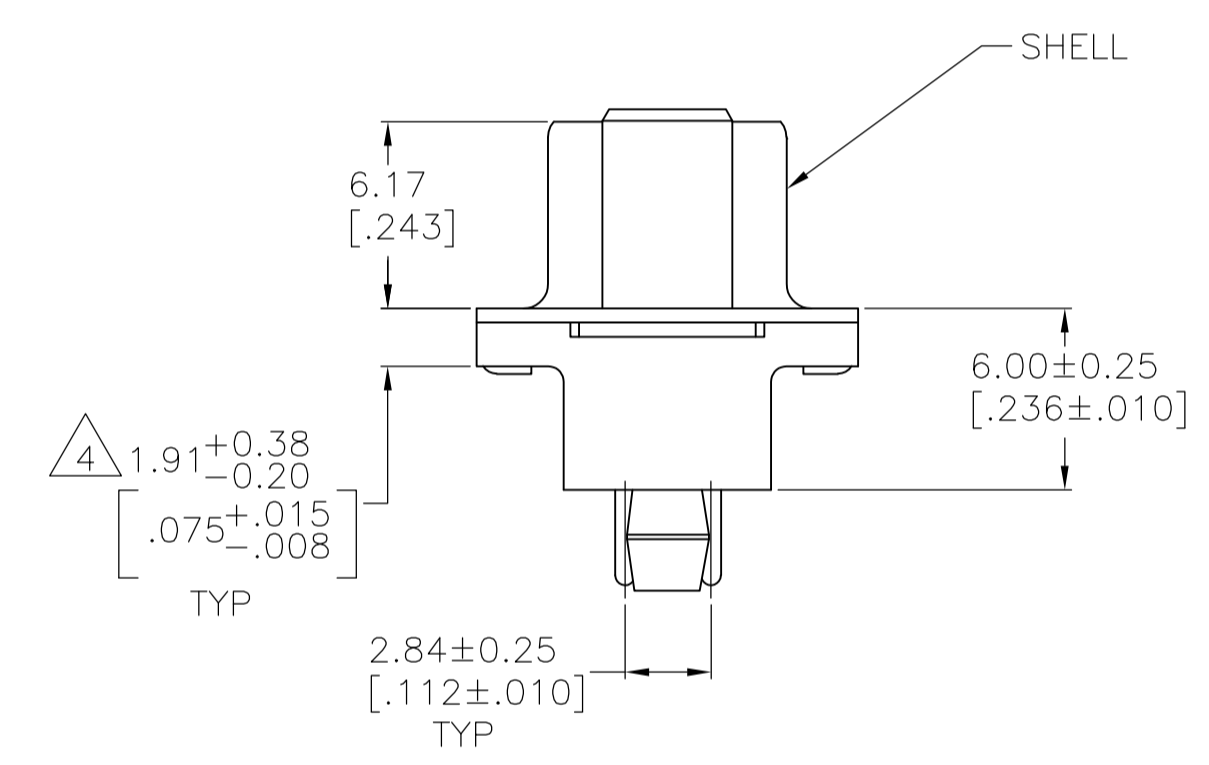
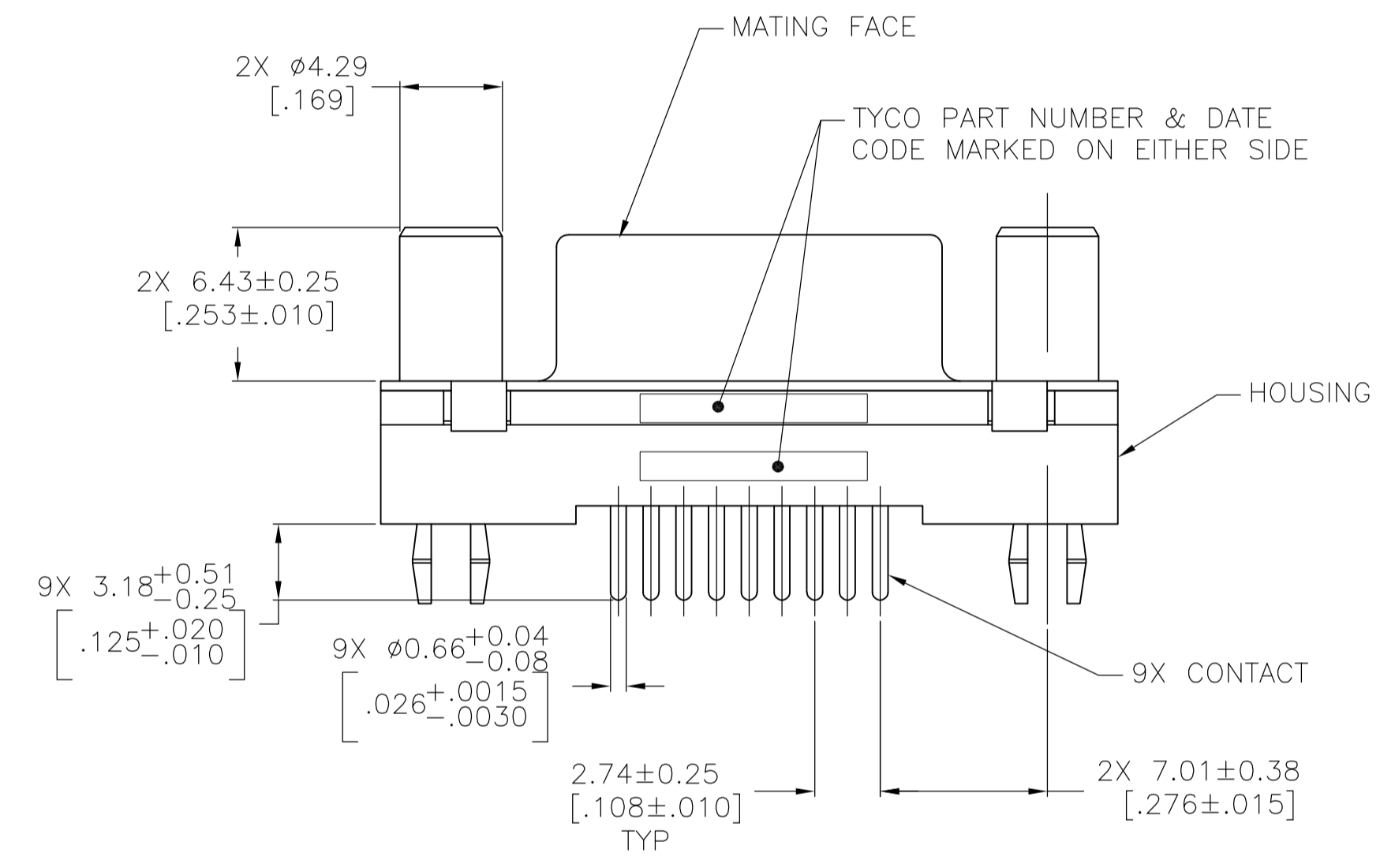
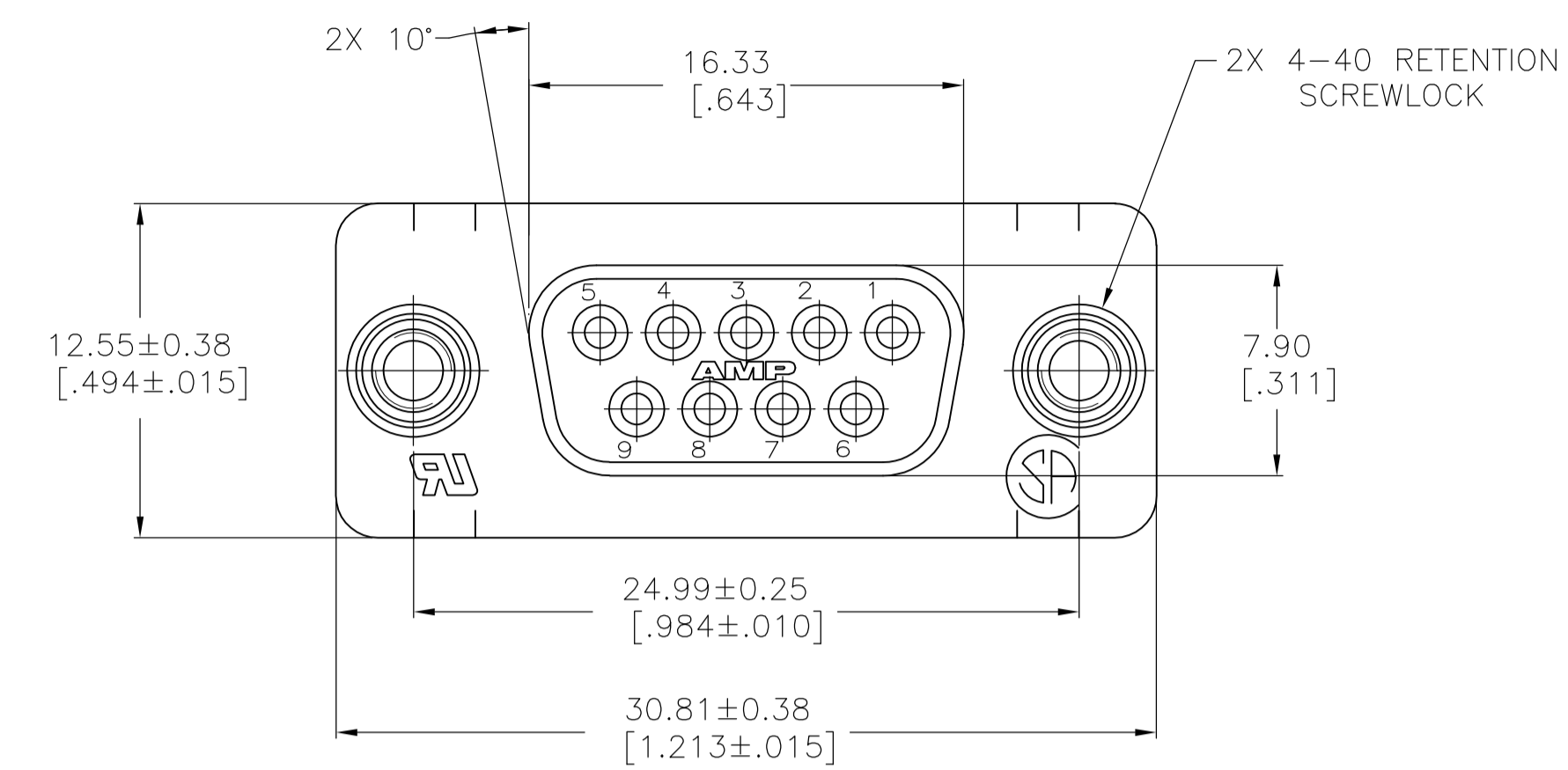
- RoHS/ELV Compliance History = Always was RoHS compliant

**Operation/Application:**

- Application = Standard

**Other:**

- Brand = AMP
- Comment = All receptacle assemblies are preloaded with size 20 DF posted socket contacts.

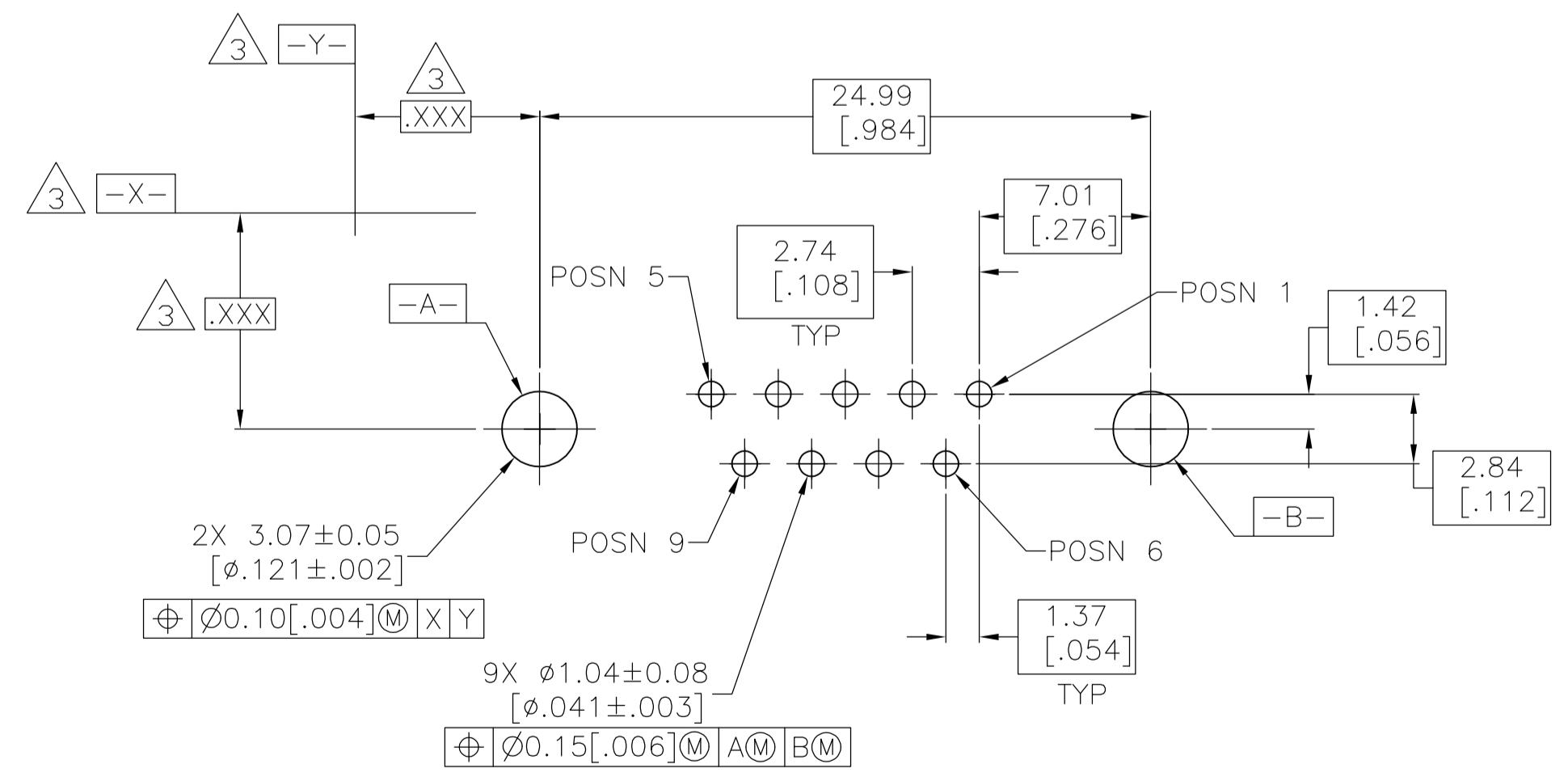
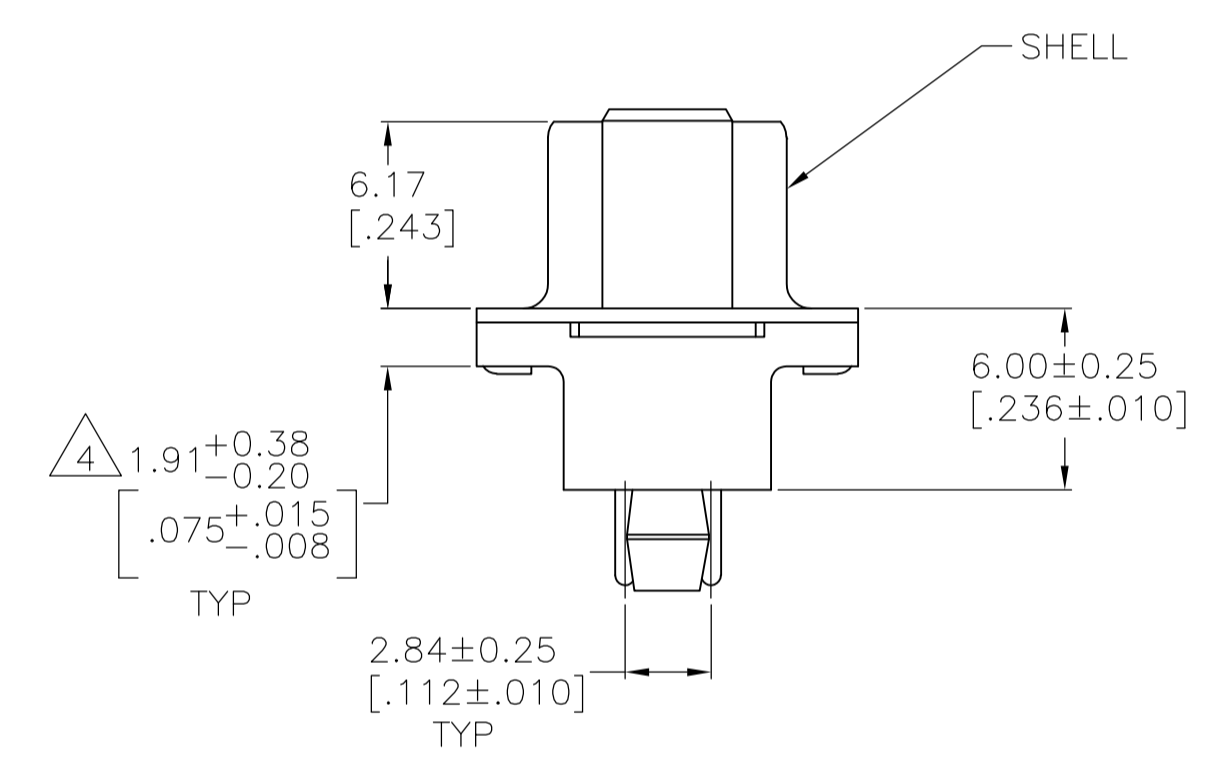
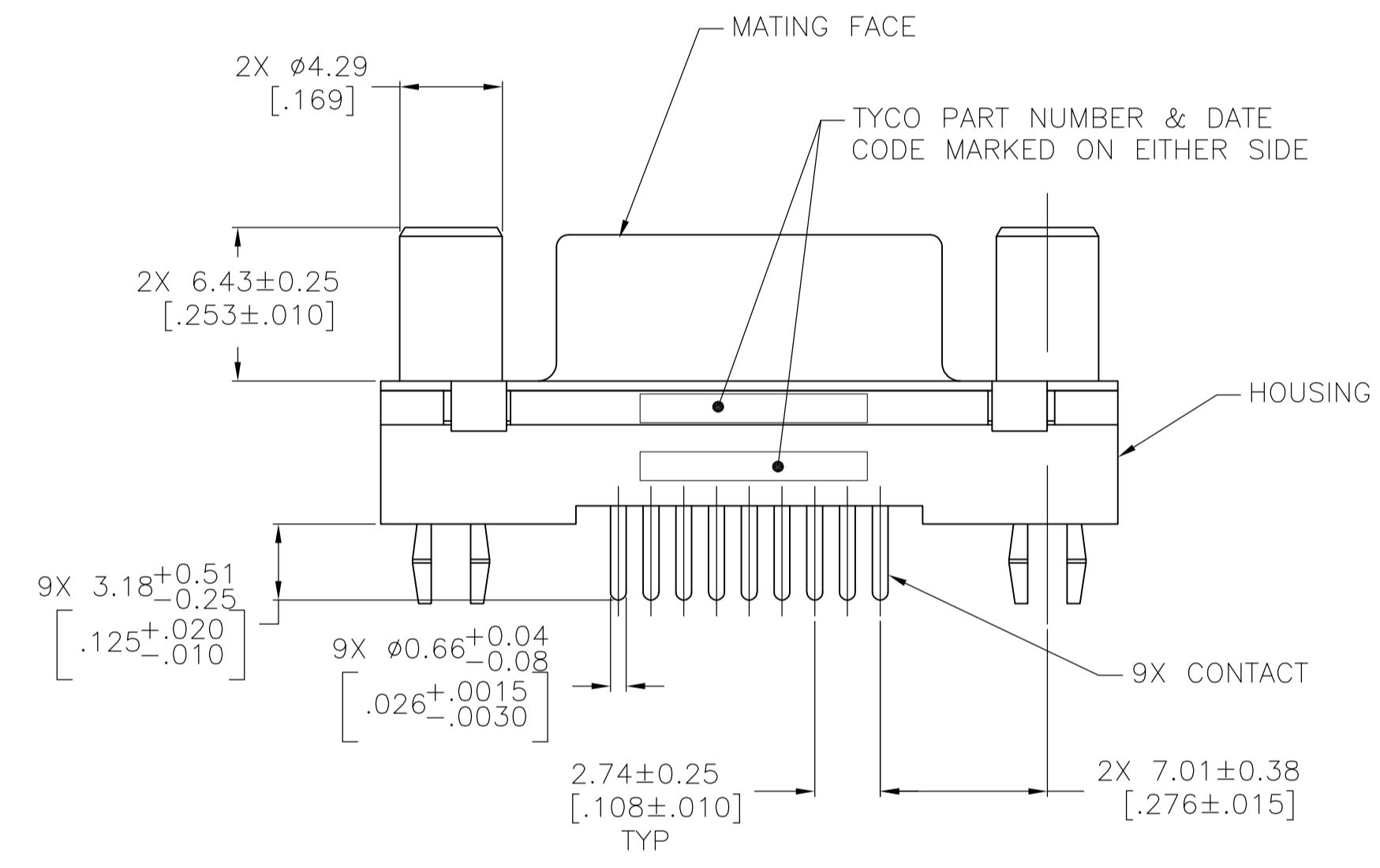
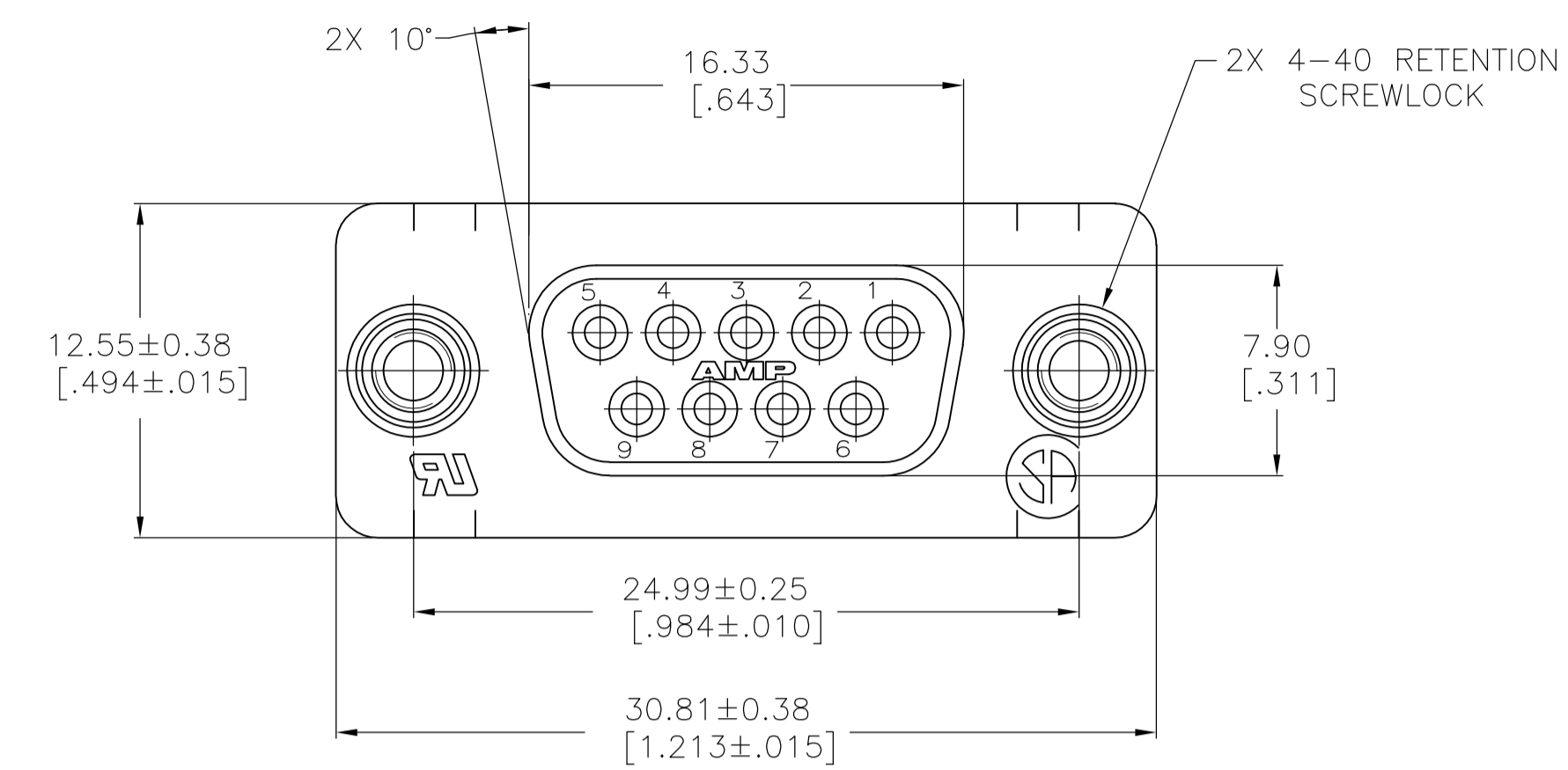


PC BOARD MOUNTING DIMENSIONS  
CONNECTOR SIDE OF BOARD  
1.57[.062] PC BOARD THICKNESS

- 1 MATERIAL:  
HOUSING: PBT, UL 94V-0 RATED, BLACK.  
SHELL: CARBON STEEL.  
CONTACTS: PHOSPHOR BRONZE.  
SCREWLOCKS: BRASS.
- 2 FINISH:  
SHELL: 5.08µm [.000200] MIN TIN OVER 2.54µm [.000100] MIN COPPER.  
CONTACTS: 0.76µm [.000030] MIN GOLD FOR A LENGTH OF 1.40 [.055] MIN FROM MATING END, 2.54µm [.000100] MIN TIN ON OPPOSITE END FOR A LENGTH OF 3.68 [.145] MIN, BOTH OVER 1.27µm [.000050] MIN NICKEL.  
SCREWLOCKS: 2.54µm [.000100] MIN TIN OVER 1.27µm [.000050] MIN NICKEL OVER COPPER FLASH.
- 3 DATUMS AND BASIC DIMENSIONS ESTABLISHED BY CUSTOMER.
- 4 2.79[.110] MAX IN SHELL TAB CLINCH AREAS.

5750678-1  
PART NUMBER

THIS DRAWING IS A CONTROLLED DOCUMENT.		DIN B MCMASTER 12AUG05	TE Connectivity
DIMENSIONS: mm [INCHES]		CHK S BOLASH 12AUG05	
TOLERANCES UNLESS OTHERWISE SPECIFIED:		APVD M WALMSLEY 12AUG05	NAME
0 PLC ± -	1 PLC ± -	2 PLC ± 0.13 [.005]	RECEPTACLE ASSEMBLY, SIZE 1, 9 POSN, VERTICAL, FRONT METAL SHELL, AMPLIMITE HD-20
3 PLC ± -	4 PLC ± -	ANGLES ± -	PRODUCT SPEC 108-40025
MATERIAL 1	FINISH 2	WEIGHT -	APPLICATION SPEC 114-40023
CUSTOMER DRAWING		SCALE 4:1	RESTRICTED TO
		SHEET 1 OF 1	REV A1



PC BOARD MOUNTING DIMENSIONS  
CONNECTOR SIDE OF BOARD  
1.57[.062] PC BOARD THICKNESS

- 1 MATERIAL:  
HOUSING: PBT, UL 94V-0 RATED, BLACK.  
SHELL: CARBON STEEL.  
CONTACTS: PHOSPHOR BRONZE.  
SCREWLOCKS: BRASS.
- 2 FINISH:  
SHELL: 5.08µm [.000200] MIN TIN OVER 2.54µm [.000100] MIN COPPER.  
CONTACTS: 0.76µm [.000030] MIN GOLD FOR A LENGTH OF 1.40 [.055] MIN FROM MATING END, 2.54µm [.000100] MIN TIN ON OPPOSITE END FOR A LENGTH OF 3.68 [.145] MIN, BOTH OVER 1.27µm [.000050] MIN NICKEL.  
SCREWLOCKS: 2.54µm [.000100] MIN TIN OVER 1.27µm [.000050] MIN NICKEL OVER COPPER FLASH.
- 3 DATUMS AND BASIC DIMENSIONS ESTABLISHED BY CUSTOMER.
- 4 2.79[.110] MAX IN SHELL TAB CLINCH AREAS.

5750678-1  
PART NUMBER

THIS DRAWING IS A CONTROLLED DOCUMENT.		DIN B MCMASTER 12AUG05	TE Connectivity
DIMENSIONS: mm [INCHES]		CHK S BOLASH 12AUG05	
TOLERANCES UNLESS OTHERWISE SPECIFIED:		APVD M WALMSLEY 12AUG05	NAME
0 PLC ± -	1 PLC ± -	PRODUCT SPEC	RECEPTACLE ASSEMBLY, SIZE 1, 9 POSN, VERTICAL, FRONT METAL
2 PLC ± 0.13 [.005]	3 PLC ± -	APPLICATION SPEC	SHELL, AMPLIMITE HD-20
4 PLC ± -	ANGLES ± -	SIZE	114-40023
MATERIAL	FINISH	WEIGHT	SCALE 4:1
1	2	A1 00779 C=5750678	SHEET 1 OF 1
CUSTOMER DRAWING		RESTRICTED TO	REV A1