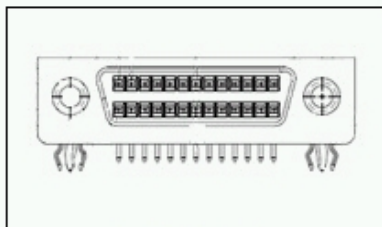
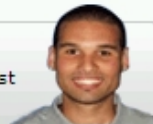


## 5750823-1 Product Details

### Have a Question?

Chat with a Product Information Specialist



**5750823-1**

TE Internal Number: 5750823-1

 **Active**

### .050 Series Board Mount Connectors

 [Always EU RoHS/ELV Compliant \(Statement of Compliance\)](#)

#### Product Highlights:

- Connector
- Housing Gender = Receptacle
- 26 Positions
- Right Angle Mount Angle
- Through Hole Contact Termination Type

[View all Features](#)

### Quick Links

- ▶ [Check Pricing & Availability](#)
- ▶ [Search for Tooling](#)
- ▶ [Product Feature Selector](#)
- ▶ [Contact Us About This Product](#)

[Add to My Part List](#)
 [Request Sample](#)
 [Find Similar Products](#)
 [Buy Product](#)

### Documentation & Additional Information

Documents are temporarily unavailable. We are working hard to correct the problem. Please try again later.

#### Additional Information:

- [Product Line Information](#)

#### Related Products:

- [Tooling](#)

### Product Features (Please use the Product Drawing for all design activity)

#### Product Type Features:

- [Product Type](#) = Connector
- Mount Angle = Right Angle
- PCB Mount Retention = With
- [PCB Mount Polarization](#) = Without
- [Shell Type](#) = Full Metal
- [Product Series](#) = Slimline
- Shell Material = Carbon Steel
- Bracket Material = Zinc

#### Mechanical Attachment:

- Mating Alignment = Without
- Panel Attachment Style = Rear Mount
- Mating Retention Type = Threaded Insert, 4-40 UNC
- Bracket Plating = Tin over Copper, Tin-lead over Copper
- Boardlock Material = Copper Alloy
- Boardlock Plating = Tin

#### Electrical Characteristics:

- [Shielded](#) = Yes

#### Termination Related Features:

- [Termination Post Length \(mm \[in\]\)](#) = 2.54 [0.100]

#### Body Related Features:

- [Number of Positions](#) = 26
- PCB Mount Retention Type = Boardlock(s)
- Mating Retention = With
- Centerline (mm [in]) = 1.27 [0.050]
- Post Plating = Tin over Nickel
- Shell Plating = Tin over Copper

#### Contact Related Features:

- [Contact Termination Type](#) = Through Hole
- [Contact Plating, Mating Area, Material](#) = Gold (30)
- Contact Base Material = Phosphor Bronze

#### Housing Related Features:

- Housing Gender = Receptacle
- Housing Material = Thermoplastic - GF
- UL Flammability Rating = UL 94V-0

#### Industry Standards:

- [RoHS/ELV Compliance](#) = RoHS compliant, ELV compliant
- [Lead Free Solder Processes](#) = Reflow solder capable to 245°C, Reflow solder capable to 260°C
- RoHS/ELV Compliance History = Always was RoHS compliant

#### Conditions for Usage:

- PCB Thickness, Recommended (mm [in]) = 1.57 [0.062]

#### Other:

- Brand = AMP

 BOOKMARK 

### Corporate Information

[Who We Are](#)  
[Investors](#)  
[News Room](#)  
[Supplier Portal](#)  
[Careers](#)


### Quick Links

[Check Distributor Inventory](#)  
[Cross Reference](#)  
[Find Documents & Drawings](#)  
[Product Compliance Support Center](#)  
[Site Map](#)

### Customer Support

[Email or Chat with Us](#)  
[Find a Phone Number](#)  
[Search Knowledge Base](#)  
[Manage Your Account](#)

### Sign up for our eNewsletter

Enter your email address 

Follow us on: 