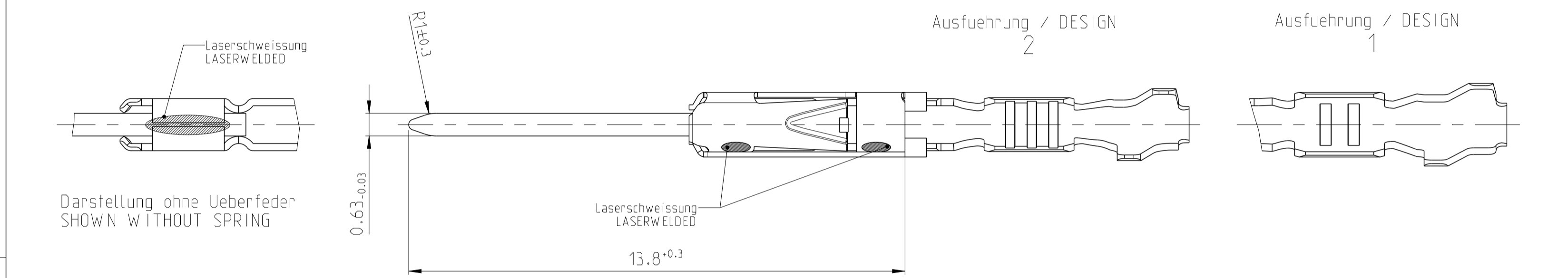
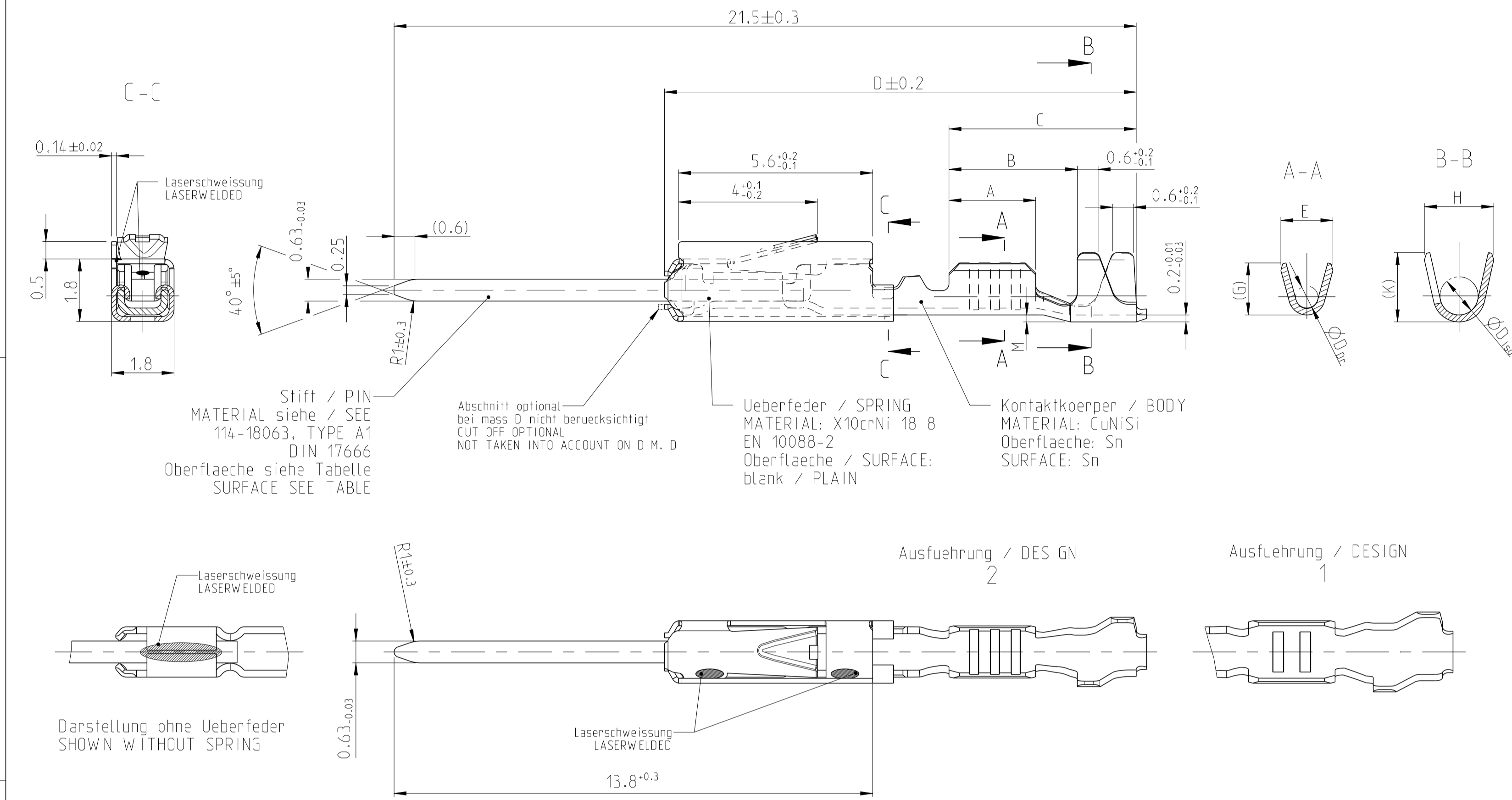
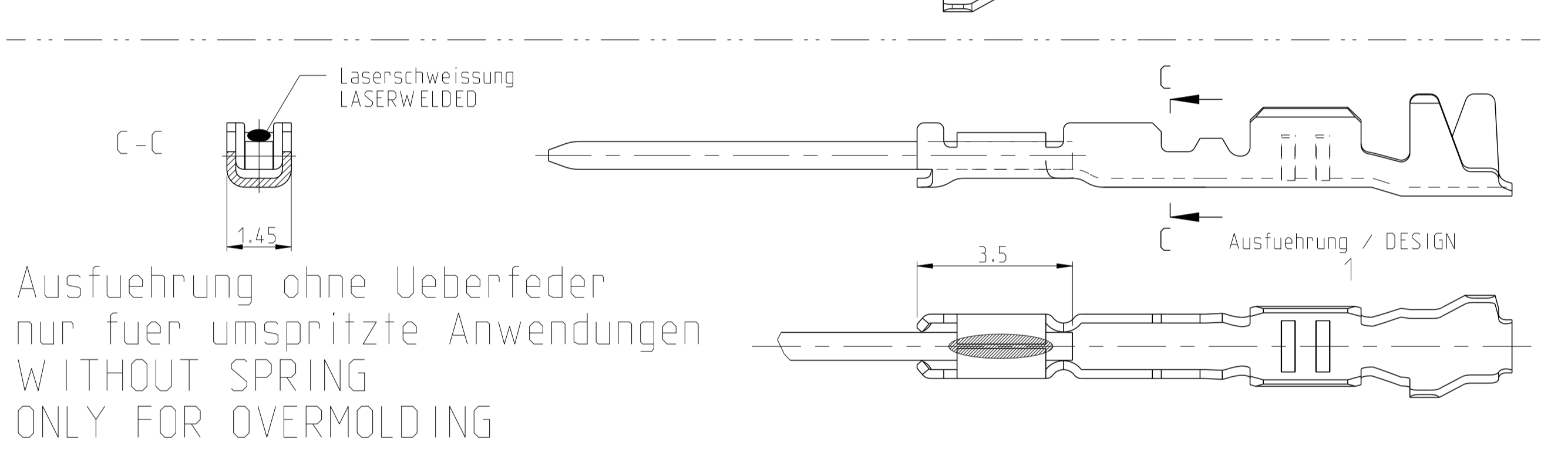
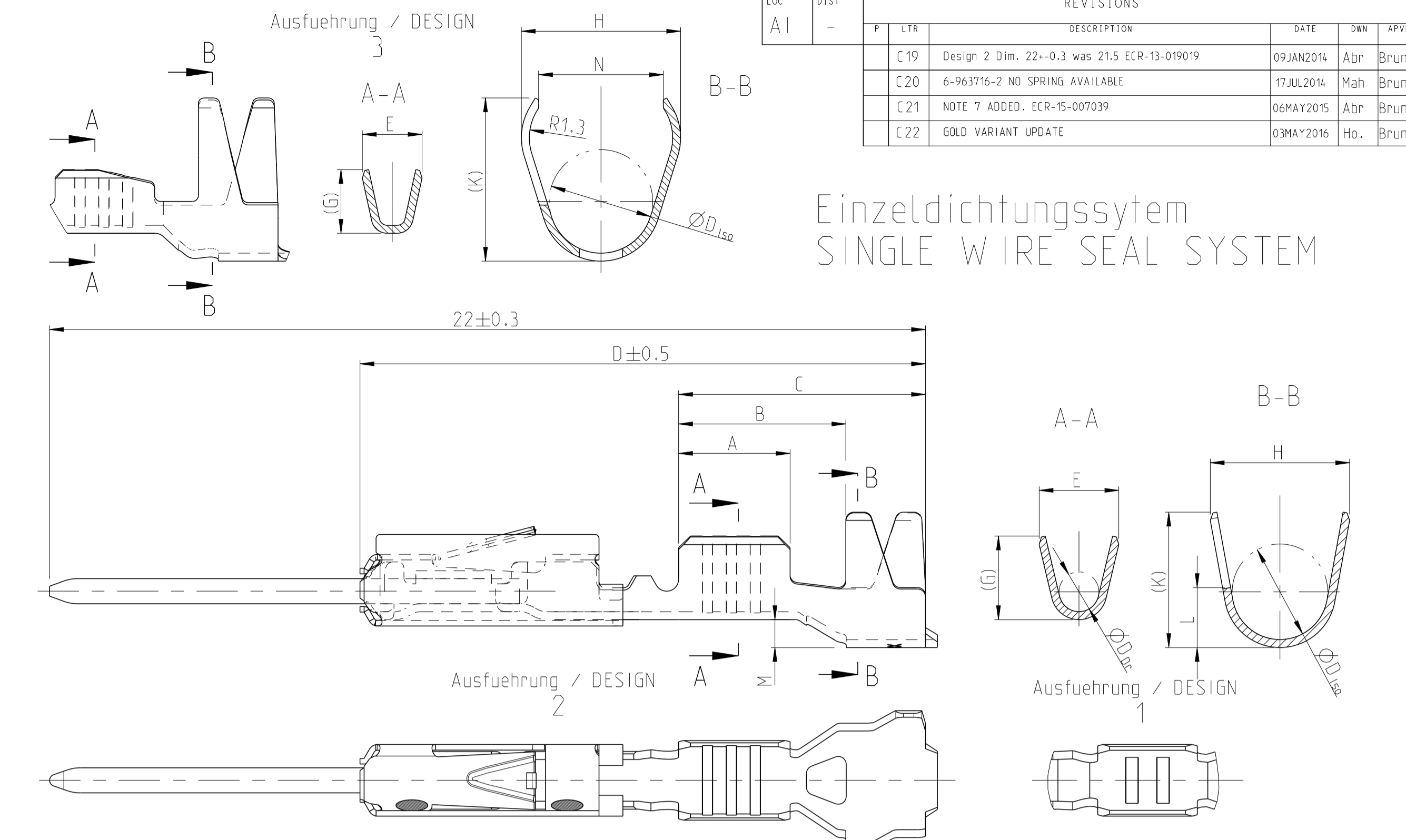


Normale Anwendung  
 USUAL APPLICATION



Ausfuehrung / DESIGN 3

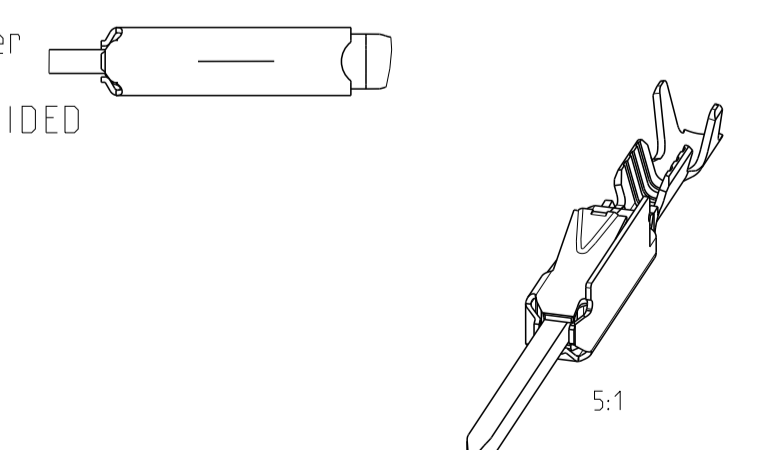


LOC	DIST	REVISIONS					
A1	-	P	LTM	DESCRIPTION	DATE	OWN	APVD
		C19		Design 2 Dim. 22-0.3 was 21.5 ECR-13-019019	09JAN2014	Abt	Brun
		C20		6-963716-2 NO SPRING AVAILABLE	17JUL2014	Mgh	Brun
		C21		NOTE 7 ADDED. ECR-15-007039	06MAY2015	Abt	Brun
		C22		GOLD VARIANT UPDATE	03MAY2016	Ho.	Brun

Bestell-Nr. Ausfuehrung ORDER NO. DESIGN 2	Bestell-Nr. Ausfuehrung ORDER NO. DESIGN 3	Rev	Bestell-Nr. Ausfuehrung ORDER NO. DESIGN 1	Rev	Ueberfeder vorhanden SPRING AVAILABLE	VERSION	DGB Wire Size Range mm <sup>2</sup>	Oberflaeche SURFACE	Laenge LENGTH mm	Drahtcrimp WIRE CRIMP mm	Iso-crimp INSU-CRIMP mm	Gewicht WEIGHT g	Verarbeitung Spez. APPLICATION SPEC.	DGB Wire Size Range mm <sup>2</sup>	Isolations Ø INSULATION DIA. mm	fuer Kammer Ø3.45 FOR CAVITY DIA. 3.45 mm	Blindstopfen RUBBER PLUG	fuer Kammer Ø4 FOR CAVITY DIA. 4 mm	Blindstopfen RUBBER PLUG
5-965908-2	F		965908-2	E	ja / YES	Einzelichtungssystem SINGLE WIRE SEAL SYSTEM	0.50-0.75	Au	A = 2.8 B = 4.2 C = 6.2 D = 14.3 M = 0.7	E = 2 Dr = 1	H = 3.5 K = 3.4 L = 1.5 D <sub>ISO</sub> = 2.4	0.18	114-18025	0.75	1.4-1.9	967067-1 gruen GREEN	967056-1 blau / BLUE	963142-1 schwarz BLACK	963143-1 weiss / WHITE
5-965908-1	D		965908-1	C	ja / YES		0.25-0.35	Sn	A = 2.5 B = 3.9 C = 5.9 D = 14 M = 0.7	E = 1.8 Dr = 0.8	H = 3.5 K = 3.4 L = 1.5 D <sub>ISO</sub> = 2.4	0.12		0.35	0.9-1.4	967067-2 gelb YELLOW		963142-2 grau GREY	
-	-		1-962886-1	N	nein / NO		0.13-0.17	Ag	A = 2.5 B = 4 C = 5.9 D = 13.9 M = 0.6	E = 1.5 G = 1.4	H = 4 K = 3.9 N = 3.1 D <sub>ISO</sub> = 2.6	0.15		0.13	0.85-1.25	967067-2 gelb YELLOW		963142-2 grau GREY	
5-962886-2	R		962886-2	M	ja / YES		0.50-0.75	Au	A = 2.8 B = 3.8 C = 5.6 D = 13.65 M = 0.2	E = 2 Dr = 1	H = 2.7 K = 2.9 L = 0.7 D <sub>ISO</sub> = 1.6	0.12							
5-962886-1	N		962886-1	M	ja / YES		0.25-0.35	Sn	A = 2.5 B = 3.6 C = 5.6 D = 13.65 M = 0.2	E = 1.8 G = 1.8 Dr = 0.8	H = 2.3 K = 2.3 L = 0.6 D <sub>ISO</sub> = 1.4	0.16							
2141830-3	A				ja / YES		0.13-0.17	Ag	A = 2.5 B = 3.7 C = 5.4 D = 13.65 M = 0	E = 1.5 G = 1.4	H = 2 K = 1.9 D <sub>ISO</sub> = 1.1	0.15							
2141830-2	A				ja / YES		0.08-0.22	Au		E = 1.5 G = 1.5 Dr = 0.65	H = 2 K = 2 D <sub>ISO</sub> = 1.1	0.15							
2141830-1	A				ja / YES			Sn											
6-963716-2	A				nein / NO			Au											
6-963716-1	A				nein / NO			Sn											
-	-		1-963716-2	B	nein / NO			Au											
5-963716-3	A				ja / YES			Ag											
5-963716-2	Z		963716-2	Y	ja / YES			Au											
5-963716-1	W		963716-1	V	ja / YES			Sn											
6-928918-3	A				ja / YES			Ag											
6-928918-2	Z		1-928918-2	Y	ja / YES			Au											
6-928918-1	W		1-928918-1	V	ja / YES			Sn											
5-928918-2	A		928918-2	Y	nein / NO			Au											
5-928918-1	W		928918-1	V	nein / NO			Sn											
2141828-3	A				ja / YES			Ag											
2141828-2	A				ja / YES			Au											
2141828-1	A				ja / YES			Sn											
1355719-2	C				ja / YES			Au											
1355719-1	C				ja / YES			Sn											

Bemerkungen

- Datumcode (woche/Jahr z.B. KW 38/Jahr2009) und TE-Revision (z.B. Rev.A) DATE CODE (WEEK/YEAR E.G. WEEK NUMBER 38/YEAR2009) AND TE REVISION (E.G. REV. A)
- Passend zu Buchsenkontakt siehe Zeichnung 929454 SUITABLE FOR SOCKET CONTACT SEE DRAWING 929454
- Einzelheiten der Ausfuehrung bleiben dem Hersteller ueberlassen DETAILS OF DESIGN ARE LEFT TO MANUFACTURER
- Nur fuer FLR-Leitung nach DIN 72551 Teil 6 FOR FLR-CONDUCTOR ACCORDING TO DIN 72551-6 ONLY
- nicht fuer Neuanwendung NOT FOR NEW APPLICATION
- zugverstaerkte Leitung nach LV 112-4 REINFORCED WIRE ACCORDING LV 112-4
- Bei doppelt fallenden Werkzeugen wird die erste Ueberfeder mit einer Kennzeichnung "-" versehen WITH DOUBLE OUT DIES THE FIRST SPRING WILL BE PROVIDED WITH AN INDICATION "-"



THIS DRAWING IS A CONTROLLED DOCUMENT.		OWN S.Garcia 06JAN1999	TE Connectivity	
DIMENSIONS: mm		CHK R.Jetter 06JAN1999	NAME MQS	
TOLERANCES UNLESS OTHERWISE SPECIFIED: ±0.2		APVD M.Bleicher 13AUG2003	Tabellenzeichnung Stiftkontakt TABLE PIN CONTACT	
MATERIAL: -		108-18030 APPLICATION SPEC	RESTRICTED TO	
FINISH: -		114-18021 / -18025	SIZE CAGE CODE DRAWING NO	
		WEIGHT: -	A1 00779 C=929453	
		Customer Drawing	SCALE 10:1 SHEET 1 OF 1 REV. C22	