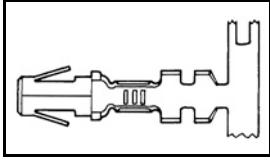


61626-1 Product Details

[Share](#) [Print](#) [Email](#)



61626-1

TE Internal Number: 61626-1

Active

[View 3D PDF](#)

**.240, .295" Centerline, 250 v, 28 A max.
(.140" MATE-N-LOK)**

Always EU RoHS/ELV Compliant
(Statement of Compliance)

Product Highlights:

- Contact
- Contact Type = Socket
- Applies To Wire/Cable
- Wire/Cable Type = Discrete Wire
- Packaging Method = Strip

[View all Features](#)

Quick Links

- ▶ [Pricing & Availability](#)
- ▶ [Search for Tooling](#)
- ▶ [View Housings \(13\)](#)
- ▶ [Product Feature Selector](#)
- ▶ [Contact Us About This Product](#)

[Add to My Part List](#) [Request Sample](#) [Find Similar Products](#)
[Buy Product](#)

Documentation & Additional Information	
<p>Product Drawings:</p> <ul style="list-style-type: none"> • SOCKET, .140 PIN & SOCKET CONNECTOR (PDF, English) <p>Catalog Pages/Data Sheets:</p> <ul style="list-style-type: none"> • SOFT_SHELL_PIN_SOCKET_CONNECTORS_STANDARD_DENSITY (PDF, English) <p>Product Specifications:</p> <ul style="list-style-type: none"> • .140 Diameter MATE-N-LOK Pin and Socket Connector (PDF, English) <p>Application Specifications:</p> <ul style="list-style-type: none"> • MATE-N-LOK .140 Diameter Pin And Socket Contacts (PDF, English) • MATE-N-LOK .140 Diameter Pin And Socket Contacts (PDF, Japanese) • MATE-N-LOK .140 Diameter Pin & Socket Contacts (PDF, Japanese) <p>Instruction Sheets:</p> <ul style="list-style-type: none"> • None Available <p>CAD Files: (CAD Format & Compression Information)</p> <ul style="list-style-type: none"> • 2D Drawing (DXF, Version E) • 3D Model (IGES, Version E) • 3D Model (STEP, Version E) 	<p>Additional Information:</p> <ul style="list-style-type: none"> • Product Line Information <p>Related Products:</p> <ul style="list-style-type: none"> • Tooling • Housings (13)

[List all Documents](#)

Product Features (Please use the Product Drawing for all design activity)	
<p>Product Type Features:</p> <ul style="list-style-type: none"> • Product Type = Contact • Wire/Cable Type = Discrete Wire • Wire Insulation Diameter (mm [in]) = 2.54 - 4.57 [0.100 - 0.180] • Connector Line = .140 MATE-N-LOK <p>Electrical Characteristics:</p> <ul style="list-style-type: none"> • Voltage (VAC) = 250 • Current Rating (A) = 28 <p>Body Features:</p> <ul style="list-style-type: none"> • Wire Range (mm [AWG]) = 0.50-2.00² [20-14] • Stock Thickness (mm [in]) = 0.35 [0.014] 	<p>Industry Standards:</p> <ul style="list-style-type: none"> • RoHS/ELV Compliance = RoHS compliant, ELV compliant • Lead Free Solder Processes = Not relevant for lead free process • RoHS/ELV Compliance History = Always was RoHS compliant <p>Conditions for Usage:</p> <ul style="list-style-type: none"> • Applies To = Wire/Cable <p>Packaging Features:</p> <ul style="list-style-type: none"> • Packaging Method = Strip <p>Other:</p>

Contact Features:

- Contact Type = Socket
- [Contact Base Material](#) = Brass
- Contact Diameter (mm [in]) = 3.56 [0.140]
- Solder Tail Contact Plating = Pre-Tin

- Brand = AMP
- Comment = HDM Applicator part number ending in -1 is used on AMPOMATOR CLS Machine with T or G Terminators, -2 is used on AMP-O-LECTRIC Model K Machine, -6 is used on AMP-O-LECTRIC Model G Machine.

Corporate Information

[About TE](#)
[Investors](#)
[News Room](#)
[Supplier Portal](#)
[Careers](#)
[Terms & Conditions](#)
[Privacy Policy](#)
[AODA Accessibility Policy](#)
[AODA Multi-Year Accessibility Plan](#)

Quick Links

[Distributor Inventory](#)
[Product Cross Reference](#)
[Documents & Drawings](#)
[Product Compliance Support Center](#)
[Site Map](#)

Customer Support

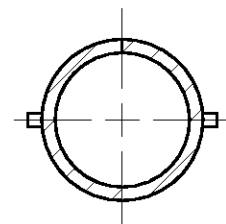
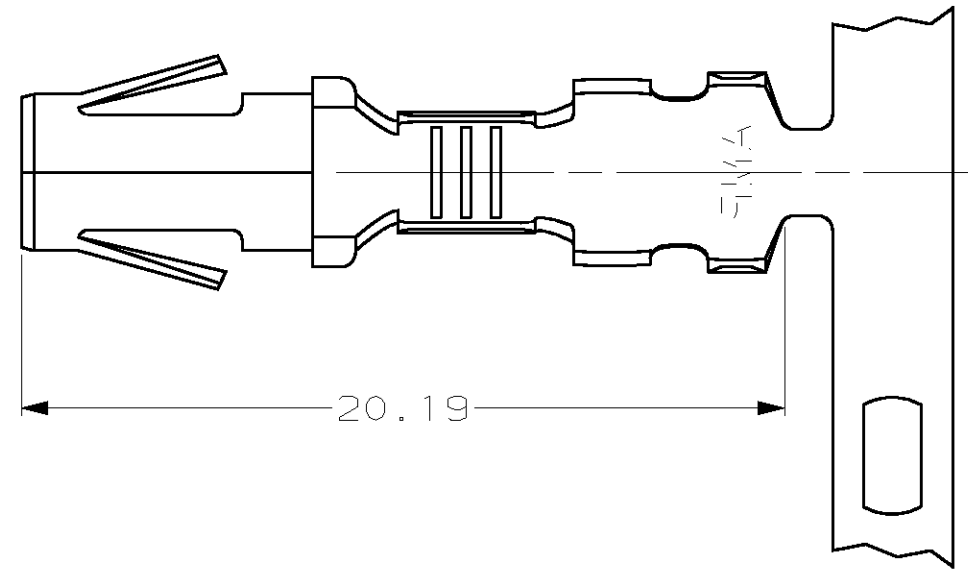
[Email or Chat With Us](#)
[Find a Phone Number](#)
[Knowledge Base](#)
[Manage Your Account](#)

Keep Me Informed

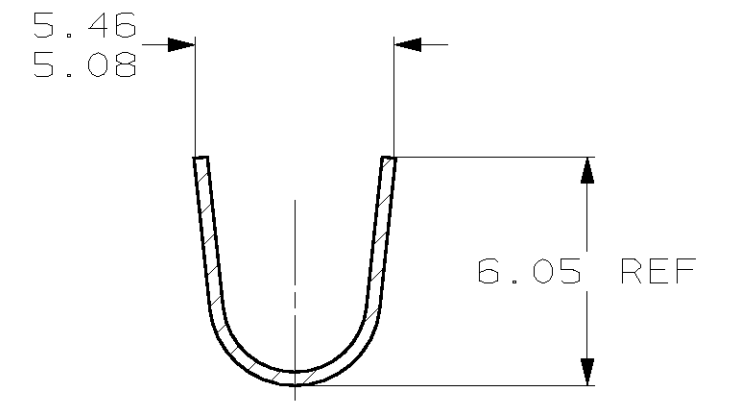
THIS DRAWING IS UNPUBLISHED. RELEASED FOR PUBLICATION .19
 (C) COPYRIGHT 19 BY AMP INCORPORATED. ALL RIGHTS RESERVED.

LOC		DIST		REVISIONS			
P	LTR	DESCRIPTION		DATE	DWN	APVD	
CM	53	E		REV & REDWN PER EC 0G1B-0217-98	29OCT98	TB	R5

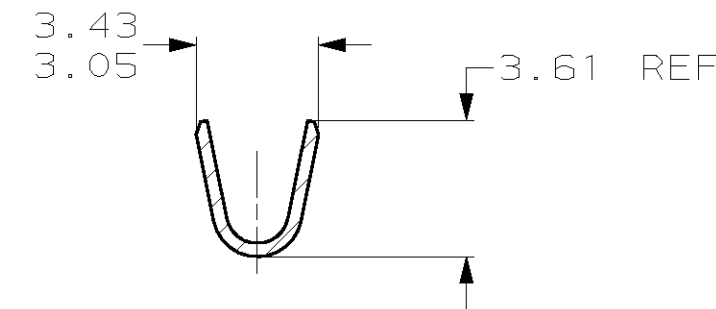
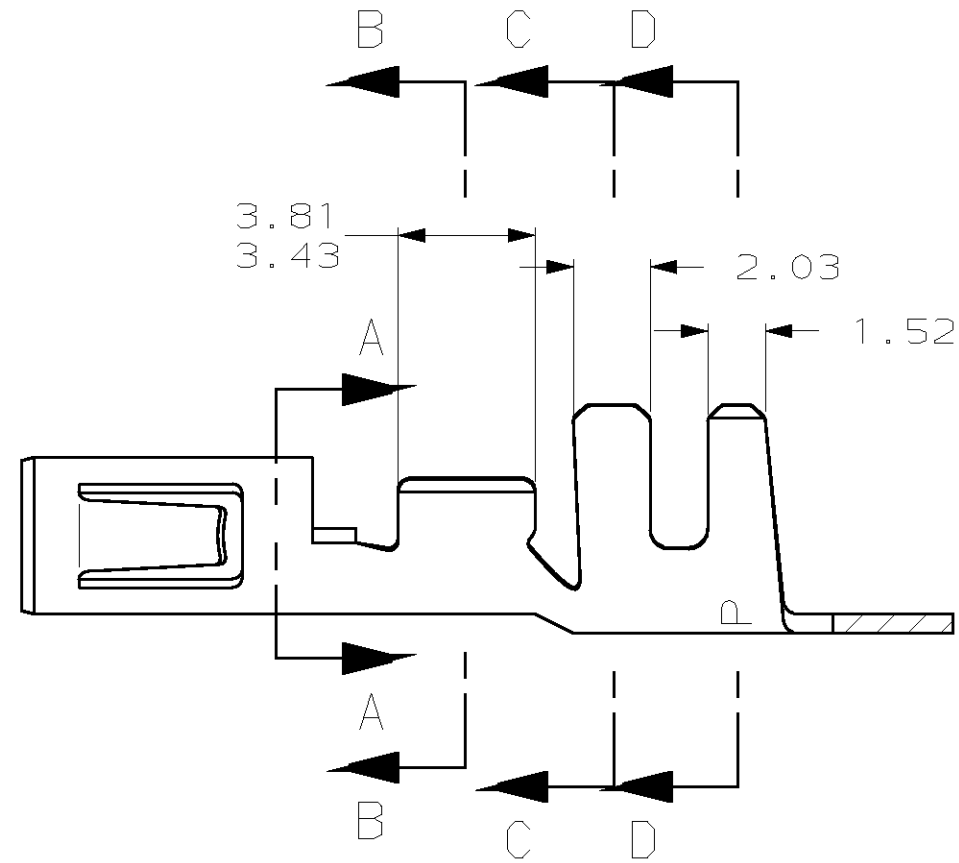
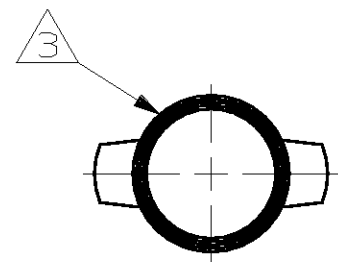
1. WIRE RANGE: 0.5 - 2 mm² (20 - 14 AWG)
2. INSULATION RANGE: 2.54 - 4.57
3. FRICTION FIT ON A 3.56 DIAMETER PIN.



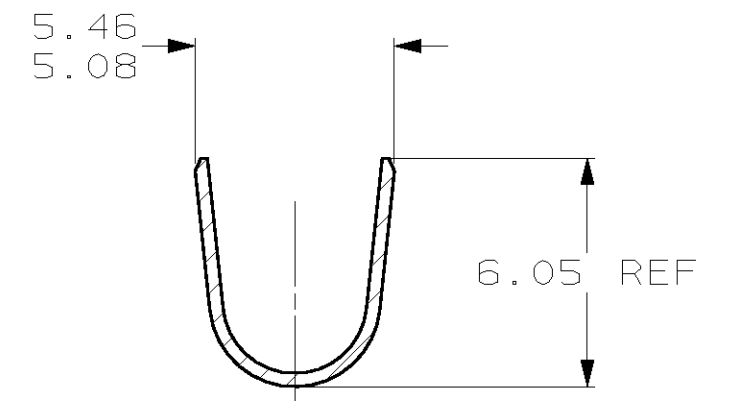
SECTION A-A



SECTION C-C



SECTION B-B



SECTION D-D

PRE TIN	0.36 PH BRZ	61626-2
PRE TIN	0.35 BRASS	61626-1
FINISH	MATERIAL	PART NUMBER

1.52	.060	3.43	.135	4.57	.180	20.19	.795
0.36	.014	3.05	.120	3.81	.150	6.05	.238
0.35	.014	2.54	.100	3.61	.142	5.46	.215
0.13	.005	2.03	.080	3.56	.140	5.08	.200
MM	IN	MM	IN	MM	IN	MM	IN

CONVERSION TABLE

METRIC

THIS DRAWING IS A CONTROLLED DOCUMENT.		DWN	T. BECK	29OCT1998	AMP Incorporated Harrisburg, PA 17105-3608
DIMENSIONS: mm		CHK	R. SWING	29OCT1998	
TOLERANCES UNLESS OTHERWISE SPECIFIED:		APVD	C. MARTIN	16NOV1998	
0 PLC ±- 1 PLC ±- 2 PLC ±0.13 3 PLC ±- 4 PLC ±- ANGLES ±-		PRODUCT SPEC	SOCKET, .140 PIN & SOCKET CONNECTOR		
MATERIAL	SEE TABLE	FINISH	SEE TABLE	WEIGHT	-
CUSTOMER DRAWING		SCALE	5:1	SHEET	1 OF 1
REV		E		RESTRICTED TO	