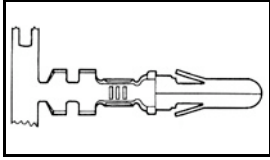


## 61627-1 Product Details

[Share](#) [Print](#) [Email](#)



61627-1

TE Internal Number: 61627-1

Active

[View 3D PDF](#)

**.240, .295" Centerline, 250 v, 28 A max.  
(.140" MATE-N-LOK)**

Always EU RoHS/ELV Compliant  
(Statement of Compliance)

**Product Highlights:**

- Contact
- Contact Type = Pin
- Applies To Wire/Cable
- Wire/Cable Type = Discrete Wire
- Packaging Method = Strip

[View all Features](#)

**Quick Links**

- ▶ [Pricing & Availability](#)
- ▶ [Search for Tooling](#)
- ▶ [View Housings \(10\)](#)
- ▶ [Product Feature Selector](#)
- ▶ [Contact Us About This Product](#)

[Add to My Part List](#)   [Request Sample](#)   [Find Similar Products](#)  
[Buy Product](#)

Documentation & Additional Information	
<p><b>Product Drawings:</b></p> <ul style="list-style-type: none"> <li>• <a href="#">.140 DIA PIN</a> (PDF, English)</li> </ul> <p><b>Catalog Pages/Data Sheets:</b></p> <ul style="list-style-type: none"> <li>• <a href="#">SOFT_SHELL_PIN_SOCKET_CONNECTORS_STANDARD_DENSITY</a> (PDF, English)</li> </ul> <p><b>Product Specifications:</b></p> <ul style="list-style-type: none"> <li>• <a href="#">.140 Diameter MATE-N-LOK Pin and Socket Connector</a> (PDF, English)</li> </ul> <p><b>Application Specifications:</b></p> <ul style="list-style-type: none"> <li>• <a href="#">MATE-N-LOK .140 Diameter Pin And Socket Contacts</a> (PDF, English)</li> <li>• <a href="#">MATE-N-LOK .140 Diameter Pin And Socket Contacts</a> (PDF, Japanese)</li> <li>• <a href="#">MATE-N-LOK .140 Diameter Pin &amp; Socket Contacts</a> (PDF, Japanese)</li> </ul> <p><b>Instruction Sheets:</b></p> <ul style="list-style-type: none"> <li>• None Available</li> </ul> <p><b>CAD Files:</b> (CAD Format &amp; Compression Information)</p> <ul style="list-style-type: none"> <li>• <a href="#">2D Drawing</a> (DXF, Version D)</li> <li>• <a href="#">3D Model</a> (IGES, Version D)</li> <li>• <a href="#">3D Model</a> (STEP, Version D)</li> </ul>	<p><b>Additional Information:</b></p> <ul style="list-style-type: none"> <li>• <a href="#">Product Line Information</a></li> </ul> <p><b>Related Products:</b></p> <ul style="list-style-type: none"> <li>• <a href="#">Tooling</a></li> <li>• <a href="#">Housings (10)</a></li> </ul>

[List all Documents](#)

Product Features (Please use the Product Drawing for all design activity)	
<p><b>Product Type Features:</b></p> <ul style="list-style-type: none"> <li>• <a href="#">Product Type</a> = Contact</li> <li>• Wire/Cable Type = Discrete Wire</li> <li>• <a href="#">Wire Insulation Diameter (mm [in])</a> = 2.54 - 4.57 [0.100 - 0.180]</li> <li>• Connector Line = .140 MATE-N-LOK</li> </ul> <p><b>Electrical Characteristics:</b></p> <ul style="list-style-type: none"> <li>• Voltage (VAC) = 250</li> <li>• Current Rating (A) = 28</li> </ul> <p><b>Body Features:</b></p> <ul style="list-style-type: none"> <li>• <a href="#">Wire Range (mm [AWG])</a> = 0.50-2.00<sup>2</sup> [20-14]</li> <li>• Stock Thickness (mm [in]) = 0.35 [0.014]</li> </ul>	<p><b>Industry Standards:</b></p> <ul style="list-style-type: none"> <li>• <a href="#">RoHS/ELV Compliance</a> = RoHS compliant, ELV compliant</li> <li>• <a href="#">Lead Free Solder Processes</a> = Not relevant for lead free process</li> <li>• <a href="#">RoHS/ELV Compliance History</a> = Always was RoHS compliant</li> </ul> <p><b>Conditions for Usage:</b></p> <ul style="list-style-type: none"> <li>• <a href="#">Applies To</a> = Wire/Cable</li> </ul> <p><b>Packaging Features:</b></p> <ul style="list-style-type: none"> <li>• <a href="#">Packaging Method</a> = Strip</li> </ul> <p><b>Other:</b></p>

**Contact Features:**

- Contact Type = Pin
- [Contact Base Material](#) = Brass
- Contact Diameter (mm [in]) = 3.56 [0.140]
- Solder Tail Contact Plating = Pre-Tin

- Brand = AMP
- Comment = HDM Applicator part number ending in -1 is used on AMPOMATOR CLS Machine with T or G Terminators, -2 is used on AMP-O-LECTRIC Model K Machine, -6 is used on AMP-O-LECTRIC Model G Machine.

**Corporate Information**

[About TE](#)  
[Investors](#)  
[News Room](#)  
[Supplier Portal](#)  
[Careers](#)  
[Terms & Conditions](#)  
[Privacy Policy](#)  
[AODA Accessibility Policy](#)  
[AODA Multi-Year Accessibility Plan](#)

**Quick Links**

[Distributor Inventory](#)  
[Product Cross Reference](#)  
[Documents & Drawings](#)  
[Product Compliance Support Center](#)  
[Site Map](#)

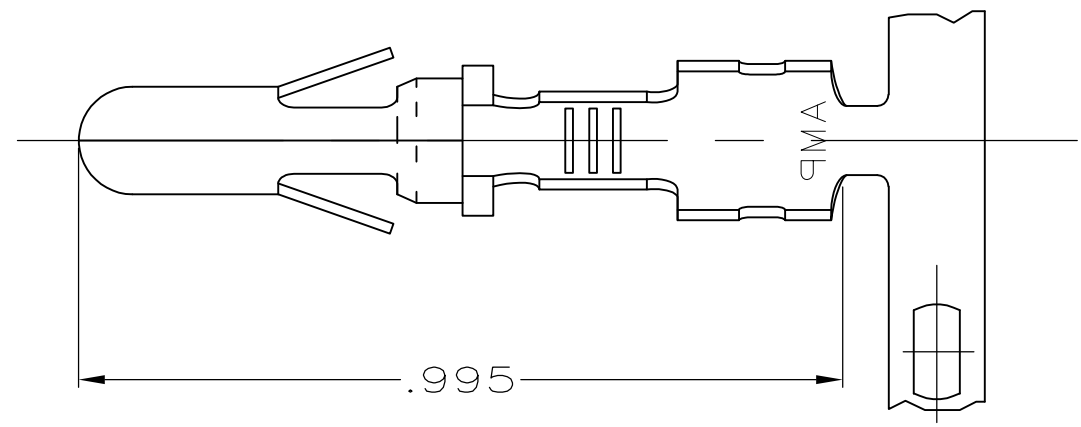
**Customer Support**

[Email or Chat With Us](#)  
[Find a Phone Number](#)  
[Knowledge Base](#)  
[Manage Your Account](#)

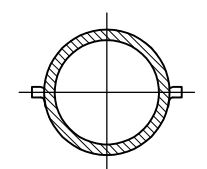
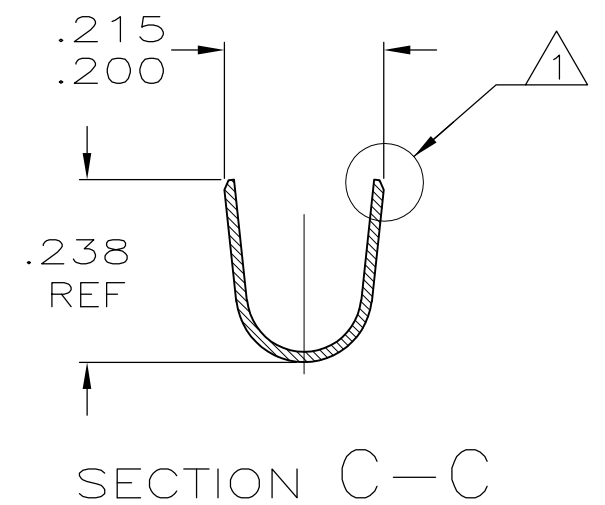
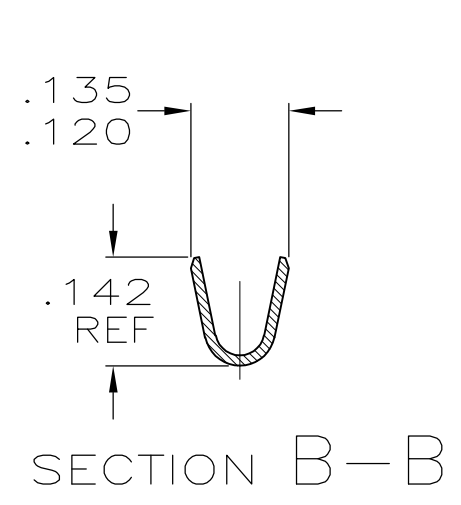
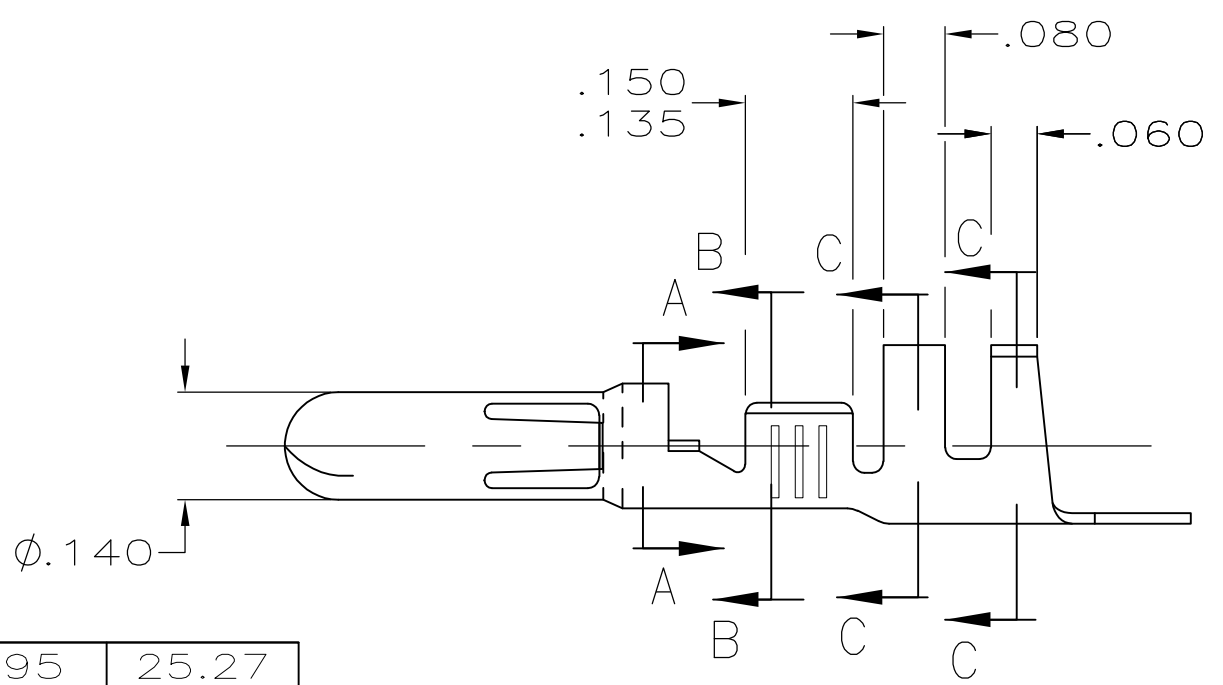
**Keep Me Informed**

THIS DRAWING IS UNPUBLISHED. RELEASED FOR PUBLICATION  
 © COPYRIGHT - By - ALL RIGHTS RESERVED.

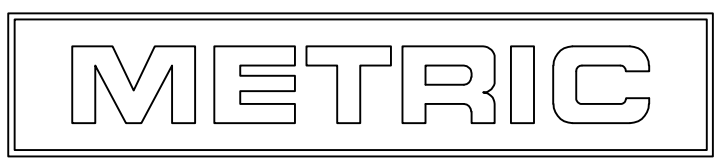
LOC	DIST	REVISIONS					
CM	53	P	LTR	DESCRIPTION	DATE	DWN	APVD
		D1		REVISED PER ECO-11-005027	11MAR11	RK	HMR



△ SWAGE, INSULATION BARREL ONLY.



SECTION A-A



.995	25.27
.238	6.05
.215	5.46
.200	5.08
.150	3.81
.142	3.61
.140	3.56
.135	3.43
.120	3.05
.080	2.03
.060	1.52
.014	0.36
.005	0.13
IN	MM
CONVERSION TABLE	

	TIN	.014 PH. BRZ	61627-2
350389-1	TIN	.014 BRASS	61627-1
LOOSE PIECE (REF)	FINISH	MATERIAL	PART NUMBER

THIS DRAWING IS A CONTROLLED DOCUMENT.

DIMENSIONS: INCHES	TOLERANCES UNLESS OTHERWISE SPECIFIED:	DWN L. SMITH 4-07-94	TE Connectivity NAME .140 DIA PIN -
	0 PLC ± -	CHK R. SWING 4-07-94	
	1 PLC ± -	APVD C. MARTIN 4-11-94	
MATERIAL SEE TABLE	FINISH SEE TABLE	PRODUCT SPEC -	
		APPLICATION SPEC -	SIZE A3 CAGE CODE 00779 DRAWING NO C-61627
		WEIGHT -	SCALE 4:1 SHEET 1 OF 1 REV D1

CUSTOMER DRAWING