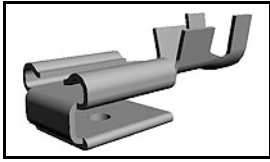


62253-2 Product Details

[Share](#) [Print](#) [Email](#)



62253-2

TE Internal Number: 62253-2

Active

[View 3D PDF](#)

FASTON Uninsulated Receptacles & Housings

Always EU RoHS/ELV Compliant
(Statement of Compliance)

Product Highlights:

- Terminal
- Terminal Type = Receptacle/Tab Combination
- Mating Area Interface Dimensions = 6.35 x 0.81 mm
- Board Mount = No
- Receptacle Style = Straight

[View all Features](#)

Quick Links

- ▶ [Pricing & Availability](#)
- ▶ [Search for Tooling](#)
- ▶ [Product Feature Selector](#)
- ▶ [Contact Us About This Product](#)

[Add to My Part List](#)

[Request Sample](#)

[Find Similar Products](#)

[Buy Product](#)

Documentation & Additional Information

Product Drawings:

- [RECEPTACLE, FASTON, PIGGYBACK, 6.35 \[.250\] SERIES](#) (PDF, English)

Catalog Pages/Data Sheets:

- [82004 FASTON Terminals \(Insulated and Uninsulated\) C...](#) (PDF, English)

Product Specifications:

- None Available

Application Specifications:

- [FASTON Piggyback Receptacles](#) (PDF, English)

Instruction Sheets:

- None Available

CAD Files: (CAD Format & Compression Information)

- [2D Drawing](#) (DXF, Version AE)
- [3D Model](#) (IGES, Version AE)
- [3D Model](#) (STEP, Version AE)

[List all Documents](#)

Related Products:

- [Tooling](#)

Product Features (Please use the Product Drawing for all design activity)

Product Type Features:

- Product Type = Terminal
- Receptacle Style = Straight
- Insulation Support = Insulation Support
- Wire/Cable Type = Stranded
- Insertion Force = Normal
- Finish = Tin

Mechanical Attachment:

- Board Mount = No

Termination Features:

- Crimp Type = F-Crimp

Contact Features:

- Terminal Type = Receptacle/Tab Combination

Industry Standards:

- RoHS/ELV Compliance = RoHS compliant, ELV compliant
- Lead Free Solder Processes = Not relevant for lead free process
- RoHS/ELV Compliance History = Always was RoHS compliant
- UL Rating = Listed
- CSA Certified = Yes

Packaging Features:

Dimensions:

- **Mating Area Interface Dimensions (mm [in])** = 6.35 x 0.81 [.250 x .032]
- **Insulation Diameter (mm [in])** = 3.81-5.08 [.150-.200]

Body Features:

- **Wire Range (mm [AWG])** = 2.00-6.00² [14-10]
- **Material** = Brass
- **Stock Thickness (mm [in])** = 0.38 [0.015]

- **Packaging Method** = Strip

Other:

- **Line** = Economy
- **Brand** = AMP
- **Comment** = Tab Thickness: 0.81 [.032]

Corporate Information

[About TE](#)
[Investors](#)
[News Room](#)
[Supplier Portal](#)
[Careers](#)
[Terms & Conditions](#)
[Privacy Policy](#)
[AODA Accessibility Policy](#)
[AODA Multi-Year Accessibility Plan](#)

Quick Links

[Distributor Inventory](#)
[Product Cross Reference](#)
[Documents & Drawings](#)
[Product Compliance Support Center](#)
[Site Map](#)

Customer Support

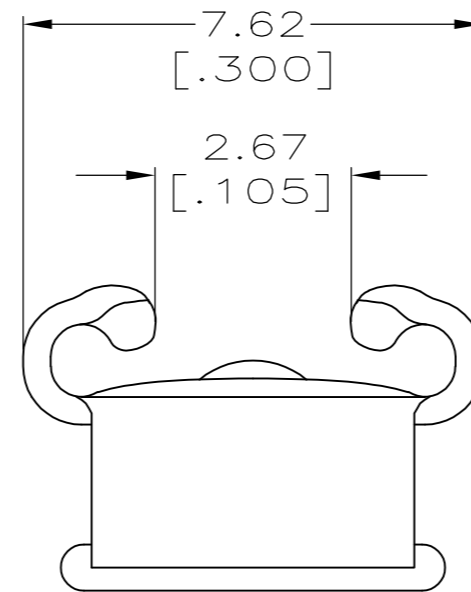
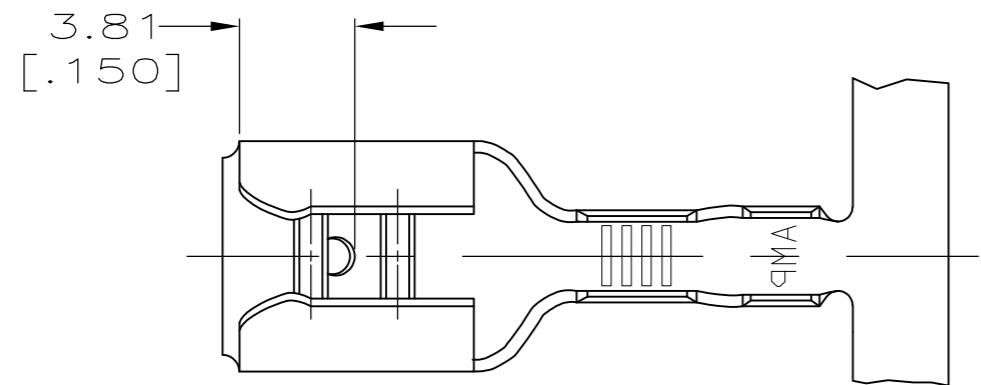
[Email or Chat With Us](#)
[Find a Phone Number](#)
[Knowledge Base](#)
[Manage Your Account](#)

Keep Me Informed

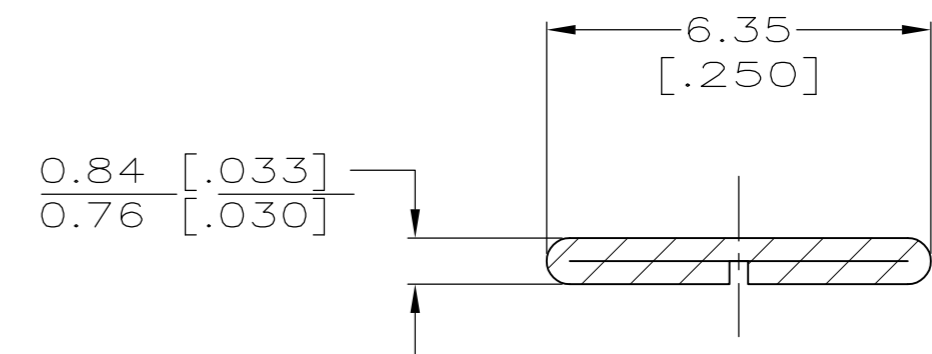
THIS DRAWING IS UNPUBLISHED. RELEASED FOR PUBLICATION
 © COPYRIGHT - By - ALL RIGHTS RESERVED.

LOC	DIST	REVISIONS			
P	LTR	DESCRIPTION	DATE	DWN	APVD
AF	50	H	REVISED PER ECR-12-013459	27NOV2012	KH PD

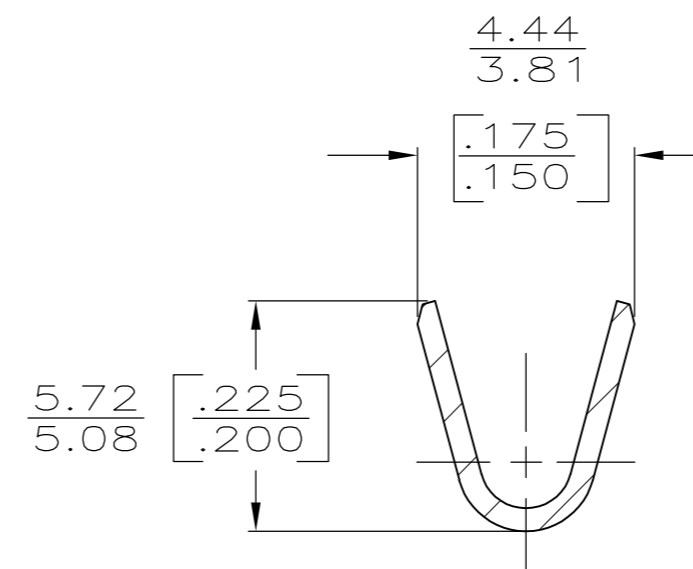
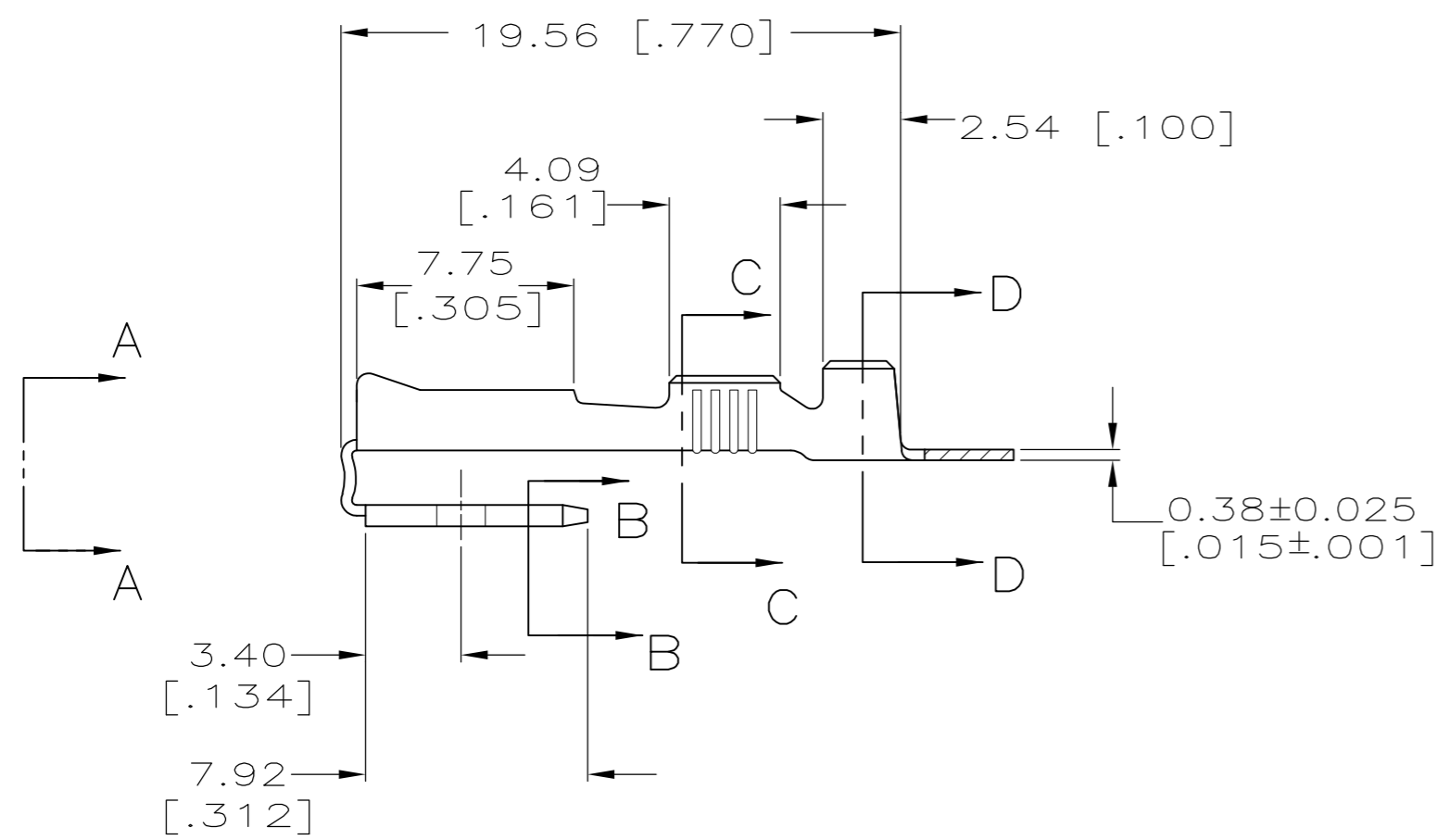
- CONTINUOUS STRIP ON REELS
- MATING TAB THK TO BE 0.81 ± 0.025 [.032±.001]
- WIRE SIZE IS #14-#10 AWG.
- INSULATION RANGE IS 3.81-5.08 [.150-.200] DIA.



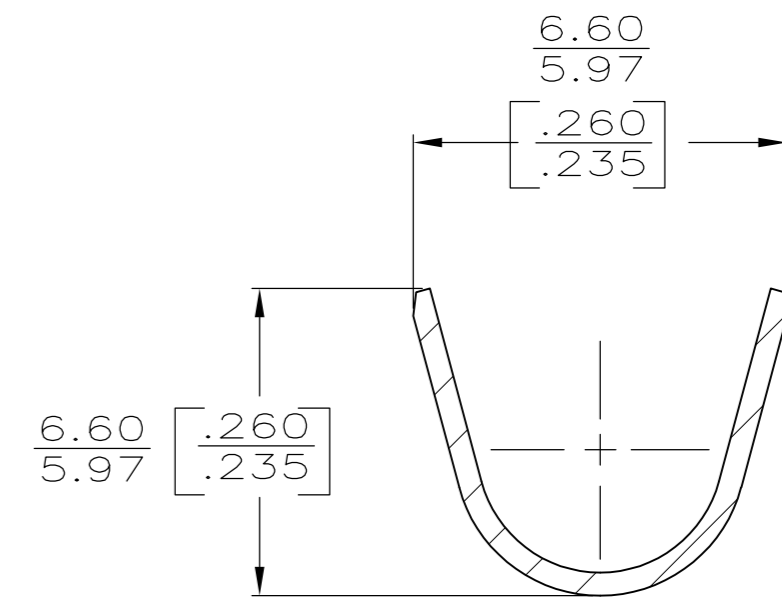
VIEW A-A
SCALE 8:1



SECTION B-B
SCALE 8:1



SECTION C-C
SCALE 8:1



SECTION D-D
SCALE 8:1

TIN	BRASS	62253-2
-	BRASS	62253-1
FINISH	MATERIAL	PART NO

THIS DRAWING IS A CONTROLLED DOCUMENT.		DWN	JR RUTH	7/12/89		TE Connectivity			
DIMENSIONS: mm [INCHES]		CHK	MS FEHER	7/12/89		RECEPTACLE, FASTON™ PIGGYBACK, 6.35 [.250] SERIES			
TOLERANCES UNLESS OTHERWISE SPECIFIED:		APVD	C MEYERS	7/12/89		SIZE	CAGE CODE	DRAWING NO	RESTRICTED TO
0 PLC ± -		PRODUCT SPEC	-			A2	00779	C=62253	-
1 PLC ± -		APPLICATION SPEC	114-2082		SCALE	SHEET	REV		
2 PLC ± -		MATERIAL	SEE TABLE		4:1	1 OF 1	H		
3 PLC ± 0.38 [.015]		FINISH	SEE TABLE		CUSTOMER DRAWING				
4 PLC ± -									
ANGLES ± -									