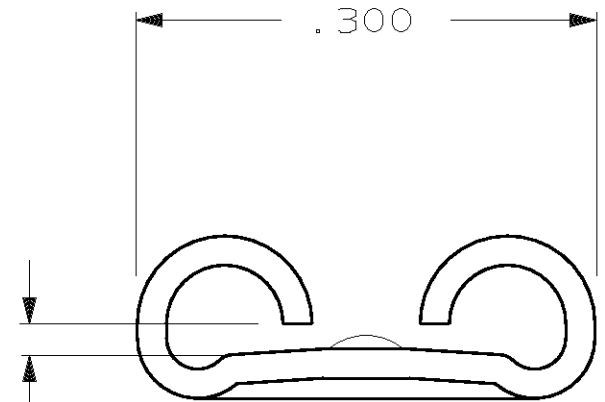
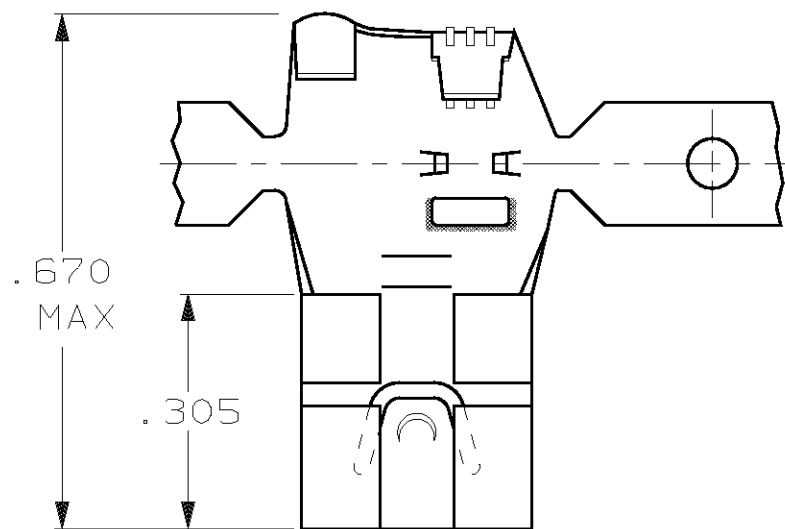


THIS DRAWING IS UNPUBLISHED. RELEASED FOR PUBLICATION ,19 .
 © COPYRIGHT 19 BY AMP INCORPORATED, HARRISBURG, PA. ALL INTERNATIONAL RIGHTS RESERVED. AMP PRODUCTS MAY BE COVERED BY U.S. AND FOREIGN PATENTS AND/OR PATENTS PENDING.

LOC DIST
 AF 50

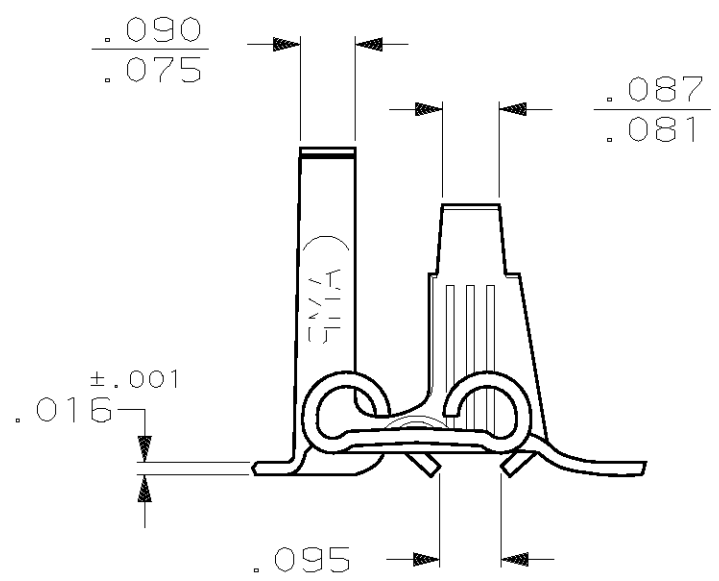
REVISIONS				
ZONE	LTR	DESCRIPTION	DATE	APPROVED
	L	ADDED -5 PER 061A-0134-98	4/28/98	JR/JG

- 1- CONTINUOUS STRIP ON REELS.
- 2- STRESS RELIEVE THIS PART
- 3- THIS PART MUST MATE TO A TAB WITH A HOLE, NOT A DIMPLE.



FITS .250 SERIES FASTON TAB

VIEW A-A



3	-	.110-.210	18-12	.032	63445-5
2	.000080 MIN TIN	.110-.210	18-12	.032	63445-4
	SILVER	.110-.210	18-12	.032	63445-3
	.000080 MIN TIN	.110-.210	18-12	.032	63445-2
		.110-.210	18-12	.032	63445-1
	FINISH	INSULATION RANGE	WIRE SIZE	MATING TAB THK. ±.001	PART NO

OBSOLETE

UNLESS OTHERWISE SPECIFIED DIMENSIONS ARE IN INCHES TOLERANCES ON:	DR 7/10/86	AMP INCORPORATED Harrisburg, Pa. 17105
	CHK 7/11/86	
2 PL DEC ± - 3 PL DEC ± .010 ANGLES ± -	APPD 7/11/86	NAME .250 SERIES FLAG FASTON RECEPTACLE
	C MEYERS	
MATERIAL 4M BRASS	APPD 7/11/86	SIZE B
FINISH	R KUZO	FSCM NO 00779
	PRODUCT SPEC	DRAWING NO 63445
	APPLICATION SPEC 114-2078	SCALE NTS
	WEIGHT	SHEET 1 OF 1