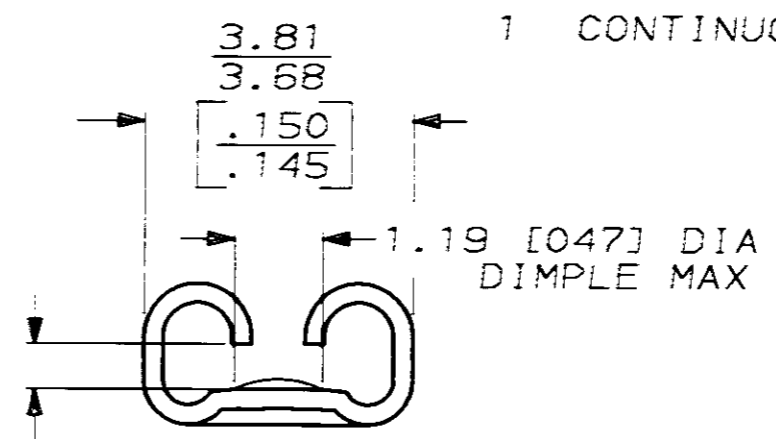
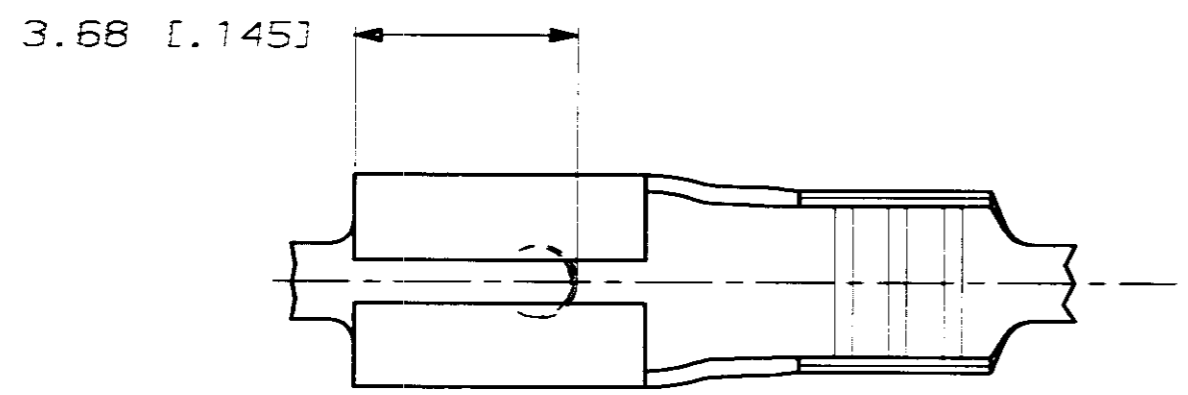


THIS DRAWING IS UNPUBLISHED. RELEASED FOR PUBLICATION, 19 .
 © COPYRIGHT 19 BY AMP INCORPORATED. ALL INTERNATIONAL RIGHTS RESERVED.

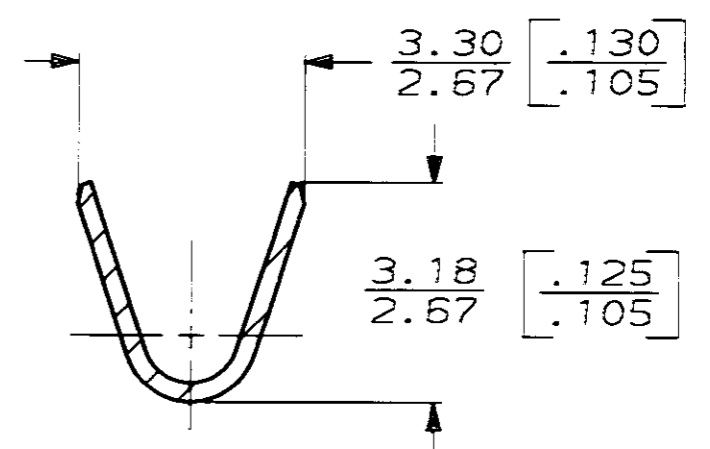
LOC		DIST		ZONE		LTR		REVISIONS		
AF	50	P	F					DESCRIPTION	DATE	APPD
								C REV PER 0259-93	7/19/93	JR/PD



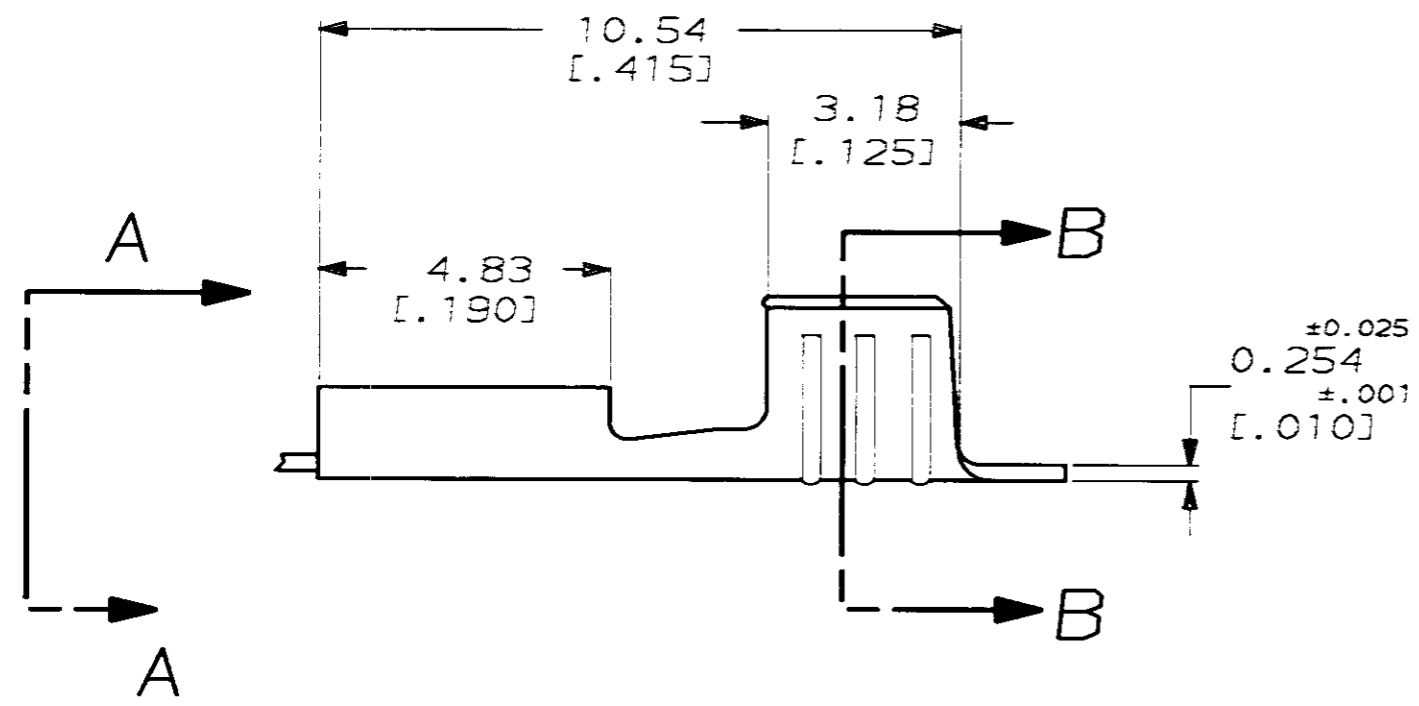
1 CONTINUOUS STRIP ON REELS

FITS 2.8 [0.110] SERIES FASTON TAB

VIEW A-A
SCALE 10:1



SECTION B-B
SCALE 10:1



METRIC

3.96 [0.156]	F	2.29 [0.090]	1.295 [0.051]	1.3mm ² [16]
			1.118 [0.044]	0.8mm ² [18]
			0.990 [0.039]	0.5mm ² [20]
STRIP LENGTH ±0.38 ±[0.015]	TYPE	WIDTH	±.051 [0.002] HEIGHT	WIRE
	WIRE BARREL CRIMP			

DO NOT SCALE PRINT. UNLESS SPECIFIED DIMENSIONS IN MM [INCHES]
 TOLERANCES ON:
 2 PLC DEC ± -
 3 PLC DEC ± 0.25 [0.010]
 ANGLES ± -
 MATERIAL #4H BRASS
 FINISH PRE-TIN
 0.002032 [0.000080] MIN THK
 PER MIL-T-10727

DR	11/16/89
JR	RUTH
CHK	11/16/89
MS	FENER
APPD	11/16/89
C	MEYERS
APPD	11/16/89
R	KUZO
PRODUCT SPEC	-
APPLICATION SPEC	-
WEIGHT	-

0.5-1.3mm ² [20-16]	0.813 [0.032]	63560-1
WIRE SIZE	MATING TAB THK ±0.025 [0.001]	PART NO
AMP AMP INCORPORATED Harrisburg, Pa. 17105		
NAME RECEPTACLE, FASTON™ 2.8 [0.110] SERIES		
SIZE	CASE CODE	DRAWING NO
B	00779	63560
SCALE	8:1	SHEET 1 OF 1