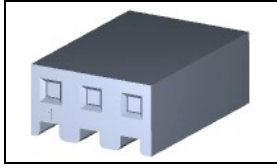


640251-3 Product Details



640251-3

TE Internal Number: 640251-3



MTA, CST-100 II, MT-6 and SL Connectors and Headers

 Always EU RoHS/ELV Compliant (Statement of Compliance)

Product Highlights:

- SL-156 Product Line
- SL Series Series
- Wire-to-Board
- Applies To Wire/Cable
- Connector

Documentation & Additional Information

Product Drawings:

- [HOUSING WITHOUT LOCKING RAMP, SL-156](#) (PDF, English)

Catalog Pages/Data Sheets:

- [MTA, CST-100 II, SL-156 and AMP Economy Power \(EP\) C...](#) (PDF, English)

Product Specifications:

- [SL 156 Connectors](#) (PDF, English)
- [Hooded SL 156 Connectors, Gold](#) (PDF, English)
- [Hooded SL 156 Connectors, Tin](#) (PDF, English)

Application Specifications:

- [SL 156 Contacts and Housings](#) (PDF, English)

Instruction Sheets:

- None Available

CAD Files: (CAD Format & Compression Information)

- [2D Drawing](#) (DXF, Version AL)
- [3D Model](#) (IGES, Version AL)
- [3D Model](#) (STEP, Version AL)

Additional Information:

- [Product Information](#)
- [Product Line Information](#)

Additional Product Images:

- [Product Photo](#)

Related Products:

- [Tooling](#)
- [Mating Products \(53\)](#)

Product Features (Please use the Product Drawing for all design activity)

Product Type Features:

- Product Line = SL-156
- Series = SL Series
- Product Type = Connector
- Connector Type = Housing
- PCB Mount Retention = Without
- PCB Mount Alignment = Without
- Strain Relief = Without
- Sealed = No
- UL File Number = E28476
- CSA File Number = LR7189

Mechanical Attachment:

- Contact Retention = Without
- [Panel Mount Retention](#) = Without

Electrical Characteristics:

- Operating Voltage Reference = AC
- Operating Voltage (VAC) = 250

Body Features:

- Mating Retention = Without
- Assembly Integration Feature = Without

Contact Features:

- Contact Type = Socket
- Contact Layout = In-Line
- Multiple Contact Types = Without

Housing Features:

- Connector Style = Receptacle
- Centerline (mm [in]) = 3.96 [0.156]
- Housing Style = Standard

Configuration Features:

- [Number of Positions](#) = 3
- [Post Number\(s\) Omitted](#) = None
- [Backwall/Post Interruption\(s\)](#) = Without
- Number of Rows = 1

Industry Standards:

- [RoHS/ELV Compliance](#) = RoHS compliant, ELV compliant
- [Lead Free Solder Processes](#) = Not relevant for lead free process
- RoHS/ELV Compliance History = Always was RoHS compliant
- Agency/Standard = CSA, UL
- UL Rating = Listed
- CSA Rating = Certified

Environmental:

- Operating Temperature (°C [°F]) = -55 - +105 [-67 - +221]

Conditions for Usage:

- [Applies To](#) = Wire/Cable
- For Use With = SL .156 Contacts

Operation/Application:

- Application Use = Wire-to-Board

Packaging Features:

- Packaging Method = Package
- Packaging Quantity = 500

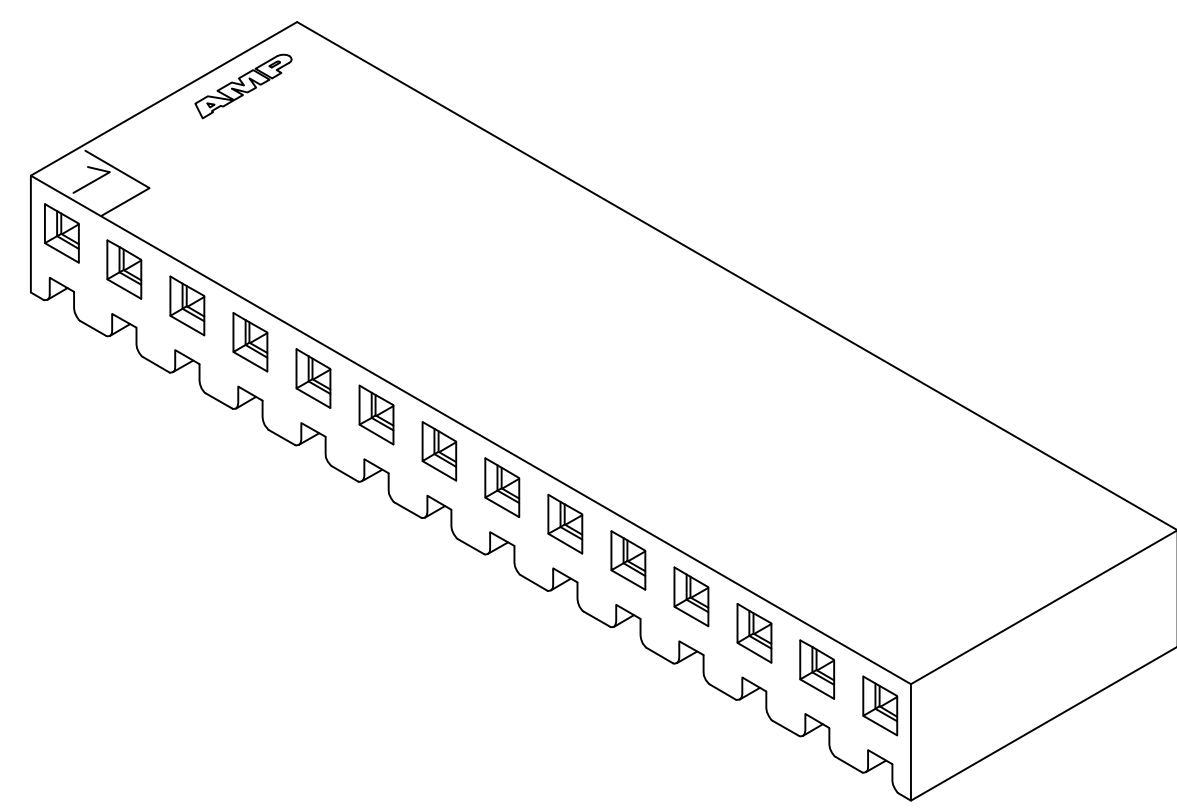
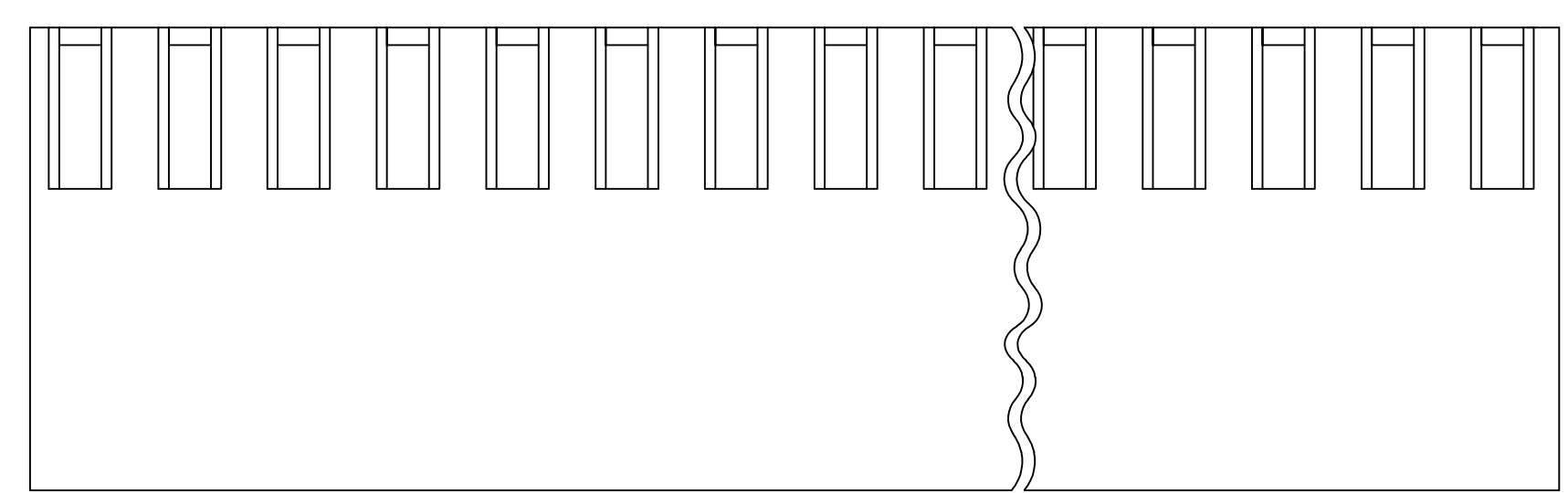
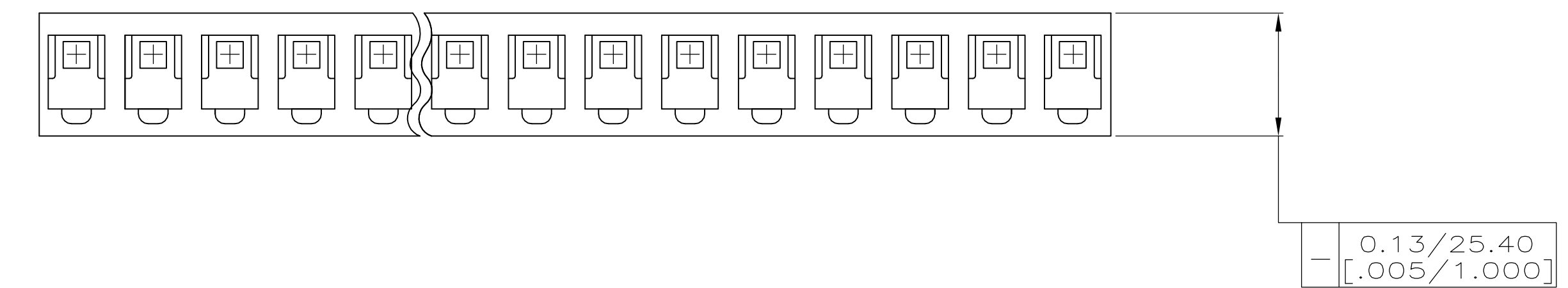
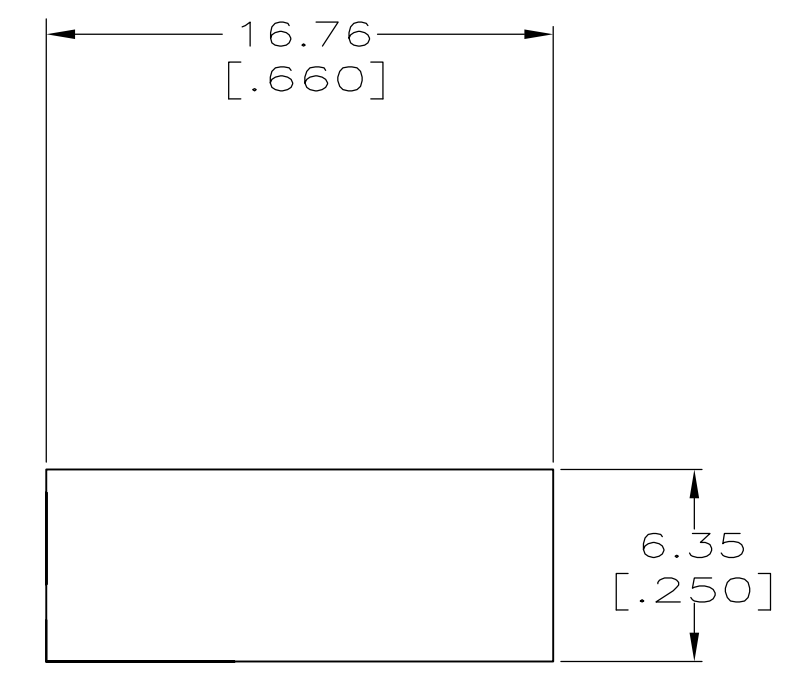
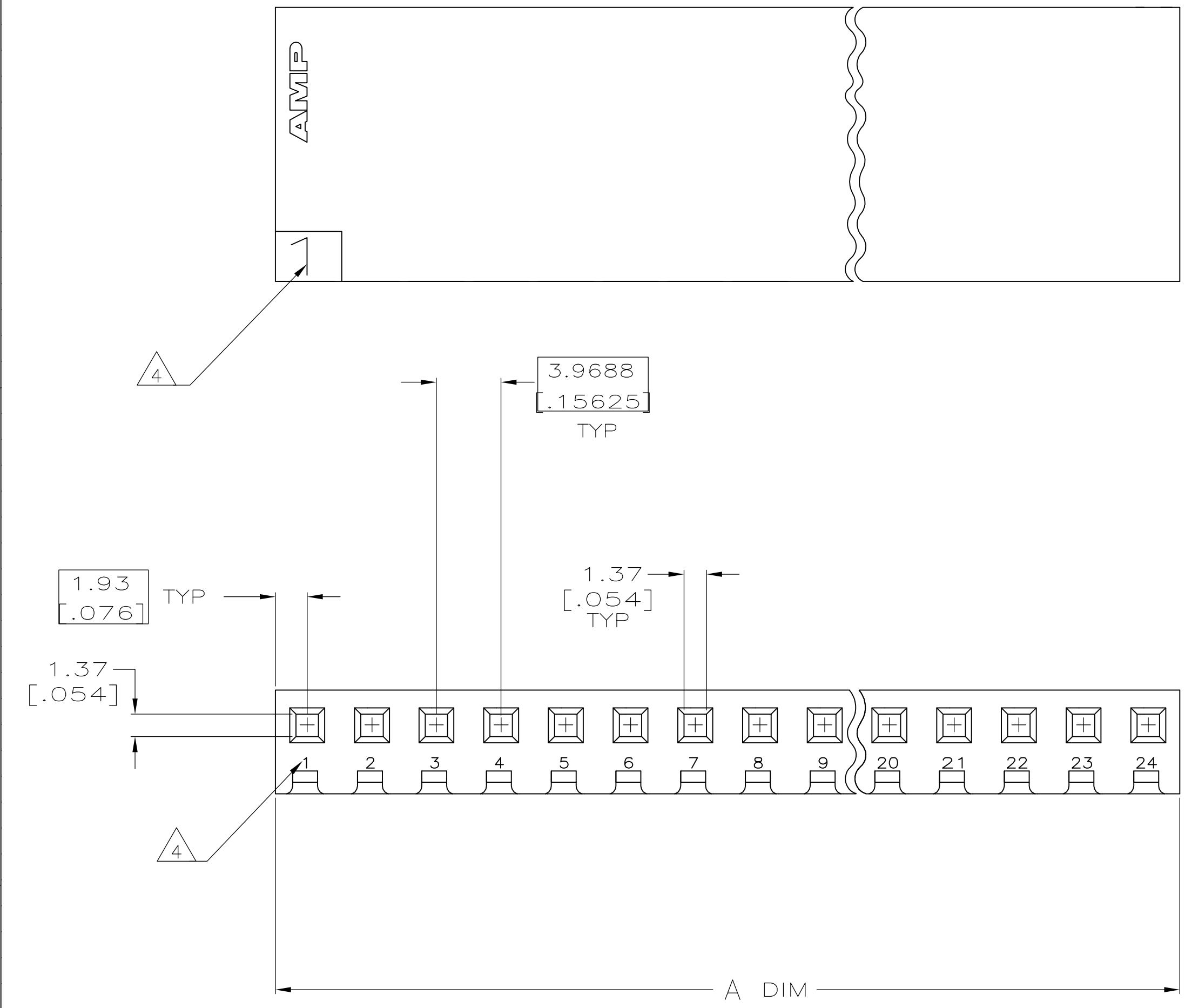
Other:

- Brand = AMP
- Comment = Unit Accepts 1.14[.045] Square or Round Post, Accepts Keying Plug 640254-1and 640255-1

- Housing Material = Nylon
- Housing Color = Natural
- Mating Alignment = Without
- UL Flammability Rating = UL 94V-0

LOC		DIST		REVISIONS			
CM	54	REV	DATE	DESCRIPTION	DATE	BY	APPV
S		REVISED PER ECO-12-007807	27JUL12			KH	SM

- 1 UNIT ACCEPTS 1.14 [.045] SQUARE OR ROUND POST.
- 2 UNIT ACCEPTS STANDARD SL-156 CONTACTS.
- 3 UNIT ACCEPTS KEYING PLUG 640254-1 AND KEYING PIN 640255-1.
- 4 CIRCUIT I.D. NUMBER(S) TO BE LOCATED SEQUENTIALLY AS SHOWN OR ONLY NO. 1 CIRCUIT PLACED ON TOP OF HOUSING.
- 5 DIMENSIONS IN BRACKETS ARE IN INCHES.



3-DIMENSIONAL MODEL NTS

95.15	[3.746]	24	2-640251-4
91.19	[3.590]	23	2-640251-3
87.20	[3.433]	22	2-640251-2
83.24	[3.277]	21	2-640251-1
79.27	[3.121]	20	2-640251-0
75.31	[2.965]	19	1-640251-9
71.32	[2.808]	18	1-640251-8
67.36	[2.652]	17	1-640251-7
63.40	[2.496]	16	1-640251-6
59.44	[2.340]	15	1-640251-5
55.45	[2.183]	14	1-640251-4
51.49	[2.027]	13	1-640251-3
47.52	[1.871]	12	1-640251-2
43.56	[1.715]	11	1-640251-1
39.57	[1.558]	10	1-640251-0
35.61	[1.402]	9	640251-9
31.65	[1.246]	8	640251-8
27.69	[1.090]	7	640251-7
23.70	[.933]	6	640251-6
19.74	[.777]	5	640251-5
15.77	[.621]	4	640251-4
11.81	[.465]	3	640251-3
7.82	[.308]	2	640251-2
3.86	[.152]	1	640251-1
A #0.25 [.010]		NO. OF CIRCUITS	PART NO

THIS DRAWING IS A CONTROLLED DOCUMENT.		DIN 6-11-92		STE		TE Connectivity	
DIMENSIONS: mm [INCHES]		TOLERANCES UNLESS OTHERWISE SPECIFIED:		E BEILES		HOUSING WITHOUT LOCKING RAMP, SL-156	
0 PLC	± -	1 PLC	± -	2 PLC	± -	3 PLC	± 0.13 [.005]
4 PLC	± -	ANGLES		FINISH		MATERIAL NYLON,UL 94V-0 NATURAL	
MATERIAL NYLON,UL 94V-0 NATURAL		FINISH -		WEIGHT -		SIZE A1 00779 C=640251	
CUSTOMER DRAWING		SCALE 4:1		SHEET 1 OF 1		REV S	