

REV. NO.	REV. DATE	REV. BY	REV. REASON
1	07/17/95
2
3
4
5
6
7

POST TO WITHSTAND 13 NEWTONS (3.0 LB.) MIN. AXIAL FORCE IN BOTH DIRECTIONS SHOWN WITHOUT DISLODGING.

△ TOLERANCES APPLY TO SOLDER SIDE OF BOARD.

△ MEASURED AT SURFACE [A]

△ PLASTIC FLASH PERMITTED IN THIS AREA.

5. PARTS COMPLY WITH AMP SOLDERABILITY SPEC. NO. 108-11-2.

△ ONE HOLE MAY BE UNDERSIZED (.005/.000 DIA.) FOR ASSEMBLY RETENTION DURING WAVE SOLDERING.

△ MATERIAL: HEADER-THERMOPLASTIC POLYESTER NON-FILLED (94V-0 NATURAL) (716.1) POST-COPPER ALLOY (TIN PLATED) (16.2)

△ MATERIAL: HEADER-THERMOPLASTIC POLYESTER NON-FILLED (94V-0 NATURAL) (716.1) POST-COPPER ALLOY (TIN PLATED)

△ COORDINATE DIMENSION APPLIES FROM CENTER OF ACTUAL FEATURE.

B. PLASTIC BURRS CAUSED BY CUT-OFF TOOLING ARE PERMITTED WITHIN THE MAXIMUM TOLERANCE ENVELOPE.

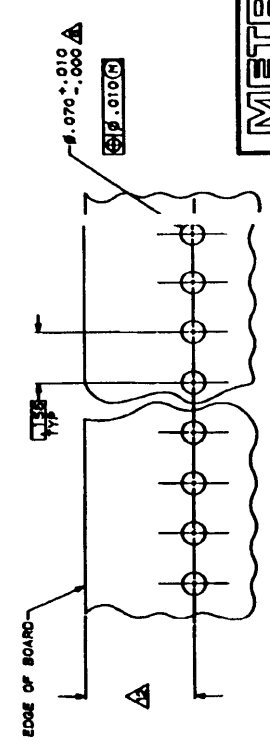
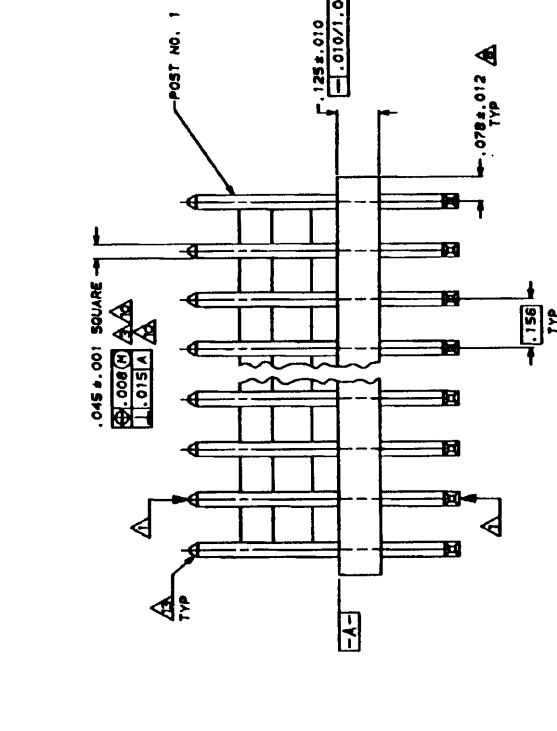
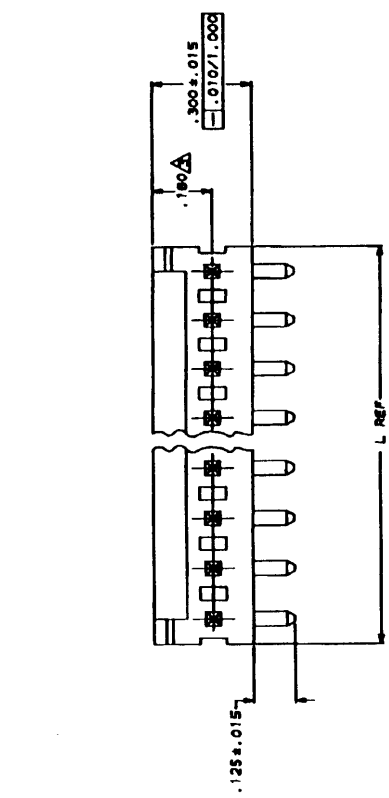
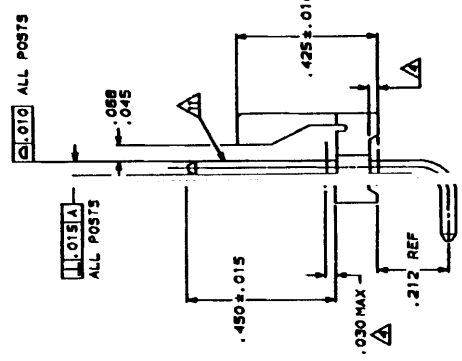
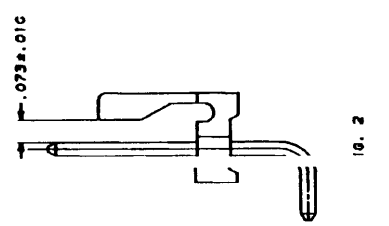
△ POST TO BE MEASURED WHEN STRIP IS HELD FLAT.

△ POST MUST WITHSTAND TWO 90° BENDS AGAINST EXTRUSION WITHOUT BREAKING.

△ DIMENSION SHOULD BE .325-.400 WHEN MATING WITH A MTA 155 CONNECTOR ASSEMBLY OR .325-.345 WHEN MATING WITH A SL-155 CONNECTOR ASSEMBLY.

△ PIN BURR OF .005 MAX. VERTICAL AND .003 MAX. HORIZONTAL PERMITTED AT POST TIPS ON BOTH ENDS.

589-184
196
202
214
226
238
240



NO	IN	MM	NUMBER OF POSITIONS	PART NUMBER
2	3.744	95.10	24	2-840389-4
3	3.566	91.14	23	2-840389-3
4	3.432	87.17	22	2-840389-2
5	3.278	83.21	21	2-840389-1
6	3.120	78.25	20	2-840389-0
7	2.964	75.29	19	1-840389-9
8	2.808	71.32	18	1-840389-8
9	2.652	67.36	17	1-840389-7
10	2.496	63.40	16	1-840389-6
11	2.340	59.44	15	1-840389-5
12	2.184	55.47	14	1-840389-4
13	2.028	51.51	13	1-840389-3
14	1.872	47.55	12	1-840389-2
15	1.716	43.59	11	1-840389-1
16	1.560	39.62	10	1-840389-0
17	1.404	35.66	9	840389-9
18	1.248	31.70	8	840389-8
19	1.092	27.74	7	840389-7
20	.936	23.77	6	840389-6
21	.780	19.81	5	840389-5
22	.624	15.85	4	840389-4
23	.468	11.89	3	840389-3
24	.312	7.92	2	840389-2



RECOMMENDED MOUNTING HOLE PATTERN FOR .063 THICK P.C. BOARD

DATE	07/17/95	BY	...
REV. NO.	1	REV. DATE	07/17/95
REV. BY	...	REV. REASON	...
SCALE	5:1	PART NO.	...
DATE	07/17/95	BY	...
REV. NO.	1	REV. DATE	07/17/95
REV. BY	...	REV. REASON	...
SCALE	5:1	PART NO.	...