

640713-1 Product Details

[Share](#) [Print](#) [Email](#)



640713-1

TE Internal Number: 640713-1

Active

[View 3D PDF](#)

Soft Shell - Accessories

Always EU RoHS/ELV Compliant
(Statement of Compliance)

Product Highlights:

- Accessory Type = Strain Relief
- Universal MATE-N-LOK
- Nylon Housing Material
- Color = White
- Number of Circuits = 2

[View all Features](#)

Quick Links

- ▶ [Pricing & Availability](#)
- ▶ [Search for Tooling](#)
- ▶ [Product Feature Selector](#)
- ▶ [Contact Us About This Product](#)

[Add to My Part List](#)

[Request Sample](#)

[Find Similar Products](#)

[Buy Product](#)

Documentation & Additional Information

Product Drawings:

- [strain relief and insert 2 circuit universal mate-n-lok](#) (PDF, English)

Catalog Pages/Data Sheets:

- [SOFT_SHELL_PIN_SOCKET_CONNECTORS_STANDARD_DENSITY](#) (PDF, English)

Product Specifications:

- None Available

Application Specifications:

- None Available

Instruction Sheets:

- [Universal MATE-N-LOK Connectors](#) (PDF, English)

CAD Files: (CAD Format & Compression Information)

- [2D Drawing](#) (DXF, Version D)
- [3D Model](#) (IGES, Version D)
- [3D Model](#) (STEP, Version D)

[List all Documents](#)

Related Products:

- [Tooling](#)

Product Features (Please use the Product Drawing for all design activity)

Product Type Features:

- [Accessory Type](#) = Strain Relief
- [Connector Line](#) = Universal MATE-N-LOK
- [Color](#) = White

Body Features:

- [Insert Supplied](#) = Yes
- [Wire Diameter Range](#) (mm [in]) = 1.02 - 4.83 [0.040 - 0.190]

Contact Features:

- [Contact Layout](#) = In-Line

Housing Features:

- [Housing Material](#) = Nylon
- [UL Flammability Rating](#) = UL 94V-0

Configuration Features:

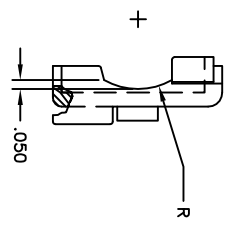
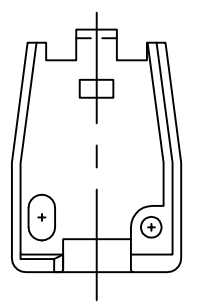
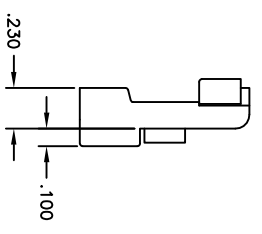
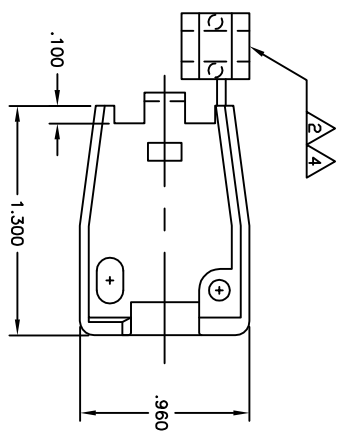
- [Number of Circuits](#) = 2

Industry Standards:

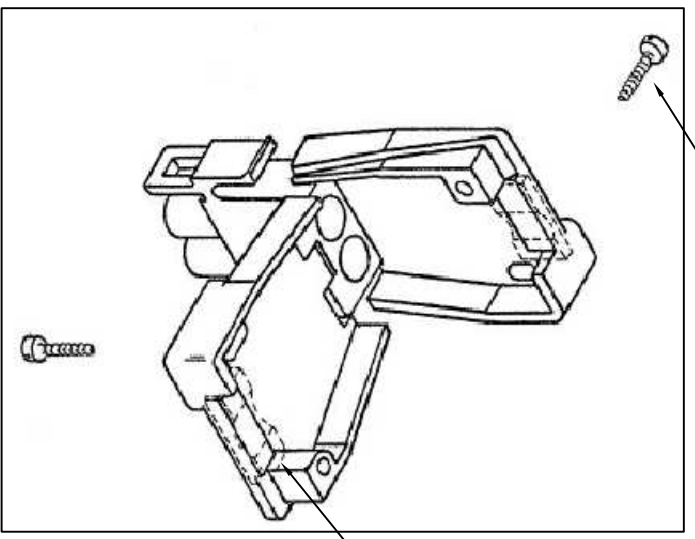
- [RoHS/ELV Compliance](#) = RoHS compliant, ELV compliant
- [Lead Free Solder Processes](#) = Not relevant for lead free process
- [RoHS/ELV Compliance History](#) = Always was RoHS compliant

Other:

- [Brand](#) = AMP
- [Comment](#) = Must use cap housing adapters when attaching strain reliefs to a cap housing. Two adapters required per housing.; Strain relief part number represents one half of a strain relief. Two of a part number are required per connector.



- 1 SHEET METAL SCREWS NOT SUPPLIED
- 2 INSERT IS ATTACHED TO STRAIN RELIEF, AS AN ADDITIONAL ADJUSTMENT FOR SMALL WIRE BUNDLES, IT SHOULD BE CUT-OFF AND POSITIONED AS SHOWN BY DOTTED LINES.
- 3 TWP REQUIRED PER CONNECTOR
- 4 STYLE 2 DOES NOT INCLUDE INSERT.
- 5 DETACHABLE INSERT MAY SEPARATE FROM STRAIN RELIEF BODY DURING SHIPPING.



(2 REQ'D) #6 X .375 LONG, TYPE '8'
 PAN HEAD SHEET METAL SCREW

REVISONS		DATE	BY	APP'D
E	REWORK PER ESR-13-016095	16OCT13	JR	TJM

STYLE 2

STYLE 1

DIMENSIONS: INCHES		DIMENSIONS: MILLIMETERS	
0 P/C	± .005	0 P/C	± .127
1 P/C	± .010	1 P/C	± .254
2 P/C	± .015	2 P/C	± .381
3 P/C	± .020	3 P/C	± .508
4 P/C	± .025	4 P/C	± .635
5 P/C	± .030	5 P/C	± .762
6 P/C	± .035	6 P/C	± .889
7 P/C	± .040	7 P/C	± .1016
8 P/C	± .045	8 P/C	± .1143
9 P/C	± .050	9 P/C	± .1270
10 P/C	± .055	10 P/C	± .1397
11 P/C	± .060	11 P/C	± .1524
12 P/C	± .065	12 P/C	± .1651
13 P/C	± .070	13 P/C	± .1778
14 P/C	± .075	14 P/C	± .1905
15 P/C	± .080	15 P/C	± .2032
16 P/C	± .085	16 P/C	± .2159
17 P/C	± .090	17 P/C	± .2286
18 P/C	± .095	18 P/C	± .2413
19 P/C	± .100	19 P/C	± .2540
20 P/C	± .105	20 P/C	± .2667
21 P/C	± .110	21 P/C	± .2794
22 P/C	± .115	22 P/C	± .2921
23 P/C	± .120	23 P/C	± .3048
24 P/C	± .125	24 P/C	± .3175
25 P/C	± .130	25 P/C	± .3302
26 P/C	± .135	26 P/C	± .3429
27 P/C	± .140	27 P/C	± .3556
28 P/C	± .145	28 P/C	± .3683
29 P/C	± .150	29 P/C	± .3810
30 P/C	± .155	30 P/C	± .3937
31 P/C	± .160	31 P/C	± .4064
32 P/C	± .165	32 P/C	± .4191
33 P/C	± .170	33 P/C	± .4318
34 P/C	± .175	34 P/C	± .4445
35 P/C	± .180	35 P/C	± .4572
36 P/C	± .185	36 P/C	± .4699
37 P/C	± .190	37 P/C	± .4826
38 P/C	± .195	38 P/C	± .4953
39 P/C	± .200	39 P/C	± .5080
40 P/C	± .205	40 P/C	± .5207
41 P/C	± .210	41 P/C	± .5334
42 P/C	± .215	42 P/C	± .5461
43 P/C	± .220	43 P/C	± .5588
44 P/C	± .225	44 P/C	± .5715
45 P/C	± .230	45 P/C	± .5842
46 P/C	± .235	46 P/C	± .5969
47 P/C	± .240	47 P/C	± .6096
48 P/C	± .245	48 P/C	± .6223
49 P/C	± .250	49 P/C	± .6350
50 P/C	± .255	50 P/C	± .6477
51 P/C	± .260	51 P/C	± .6604
52 P/C	± .265	52 P/C	± .6731
53 P/C	± .270	53 P/C	± .6858
54 P/C	± .275	54 P/C	± .6985
55 P/C	± .280	55 P/C	± .7112
56 P/C	± .285	56 P/C	± .7239
57 P/C	± .290	57 P/C	± .7366
58 P/C	± .295	58 P/C	± .7493
59 P/C	± .300	59 P/C	± .7620
60 P/C	± .305	60 P/C	± .7747
61 P/C	± .310	61 P/C	± .7874
62 P/C	± .315	62 P/C	± .8001
63 P/C	± .320	63 P/C	± .8128
64 P/C	± .325	64 P/C	± .8255
65 P/C	± .330	65 P/C	± .8382
66 P/C	± .335	66 P/C	± .8509
67 P/C	± .340	67 P/C	± .8636
68 P/C	± .345	68 P/C	± .8763
69 P/C	± .350	69 P/C	± .8890
70 P/C	± .355	70 P/C	± .9017
71 P/C	± .360	71 P/C	± .9144
72 P/C	± .365	72 P/C	± .9271
73 P/C	± .370	73 P/C	± .9398
74 P/C	± .375	74 P/C	± .9525
75 P/C	± .380	75 P/C	± .9652
76 P/C	± .385	76 P/C	± .9779
77 P/C	± .390	77 P/C	± .9906
78 P/C	± .395	78 P/C	± .1000
79 P/C	± .400	79 P/C	± .1016
80 P/C	± .405	80 P/C	± .1032
81 P/C	± .410	81 P/C	± .1048
82 P/C	± .415	82 P/C	± .1064
83 P/C	± .420	83 P/C	± .1080
84 P/C	± .425	84 P/C	± .1096
85 P/C	± .430	85 P/C	± .1112
86 P/C	± .435	86 P/C	± .1128
87 P/C	± .440	87 P/C	± .1144
88 P/C	± .445	88 P/C	± .1160
89 P/C	± .450	89 P/C	± .1176
90 P/C	± .455	90 P/C	± .1192
91 P/C	± .460	91 P/C	± .1208
92 P/C	± .465	92 P/C	± .1224
93 P/C	± .470	93 P/C	± .1240
94 P/C	± .475	94 P/C	± .1256
95 P/C	± .480	95 P/C	± .1272
96 P/C	± .485	96 P/C	± .1288
97 P/C	± .490	97 P/C	± .1304
98 P/C	± .495	98 P/C	± .1320
99 P/C	± .500	99 P/C	± .1336
100 P/C	± .505	100 P/C	± .1352