

## 640917-2 Product Details



**640917-2**

TE Internal Number: 640917-2



### Quick Disconnect Receptacles - Insulated

 Always EU RoHS/ELV Compliant (Statement of Compliance)

#### Product Highlights:

- Proprietary Name = PIDG FASTON
- Receptacle Style = Straight
- Wire Range = 0.30-0.90<sup>2</sup> [22-18] mm [AWG]
- Mating Area Interface Dimensions = 4.75 x 0.51 mm
- Insulation Diameter = 3.43 [.135] Max. mm [in]

### Documentation & Additional Information

#### Product Drawings:

- [RECEPTACLE, 187 SERIES, FASTON , PIDG, WIRE SIZE: 22...](#) (PDF, English)

#### Catalog Pages/Data Sheets:

- [PIDG\\_FASTON](#) (PDF, English)
- [Ultra-Fast and Ultra Fast Plus](#) (PDF, English)

#### Product Specifications:

- None Available

#### Application Specifications:

- [Pre-Insulated Diamond Grip \(PIDG\) FASTON Receptacle ...](#) (PDF, English)

#### Instruction Sheets:

- None Available

#### CAD Files: (CAD Format & Compression Information)

- [2D Drawing](#) (DXF, Version L1)
- [3D Model](#) (IGES, Version L1)
- [3D Model](#) (STEP, Version L1)

#### Additional Information:

- [Product Line Information](#)

#### Related Products:

- [Tooling](#)

### Product Features (Please use the Product Drawing for all design activity)

#### Product Type Features:

- Receptacle Style = Straight
- Insertion Force = Normal
- Finish = Tin
- Dimple Type = Dimple with wire stop
- Insulation Support = Insulation Support
- RU (UL Component Program) = Approved
- Color = Red

#### Electrical Characteristics:

- Voltage (VAC) = 300

#### Termination Features:

- Wire/Cable Size (CMA) = 509 – 1,900

#### Dimensions:

- Mating Area Interface Dimensions (mm [in]) = 4.75 x 0.51 [.187 x .020]
- Insulation Diameter (mm [in]) = 3.43 [.135] Max.

#### Body Features:

- Fully Insulated = No
- Wire Range (mm [AWG]) = 0.30-0.90<sup>2</sup> [22-18]
- Material = Brass
- Insulation Material = Nylon
- Stock Thickness (mm [in]) = 0.41 [0.016]

#### Industry Standards:

- RoHS/ELV Compliance = RoHS compliant, ELV compliant
- Lead Free Solder Processes = Not relevant for lead free process
- RoHS/ELV Compliance History = Always was RoHS compliant
- CSA Certified = Yes

#### Packaging Features:

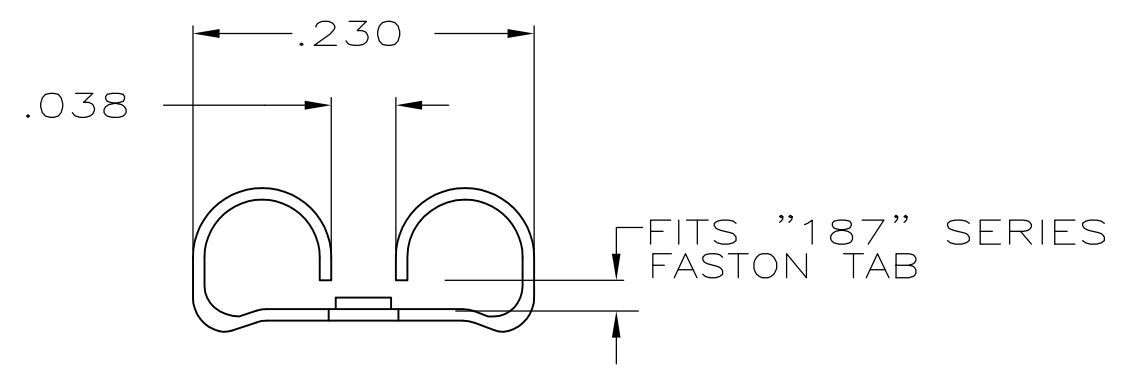
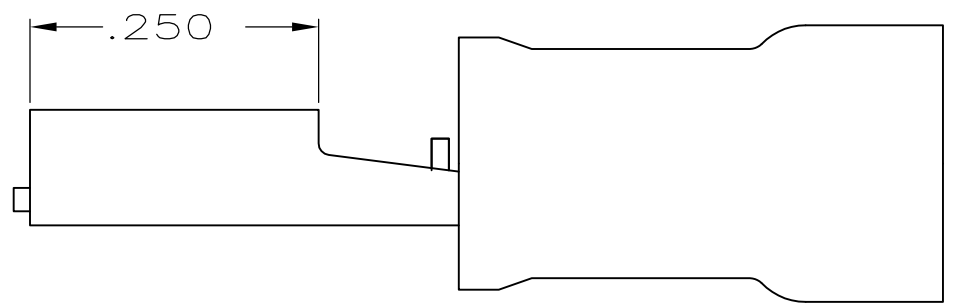
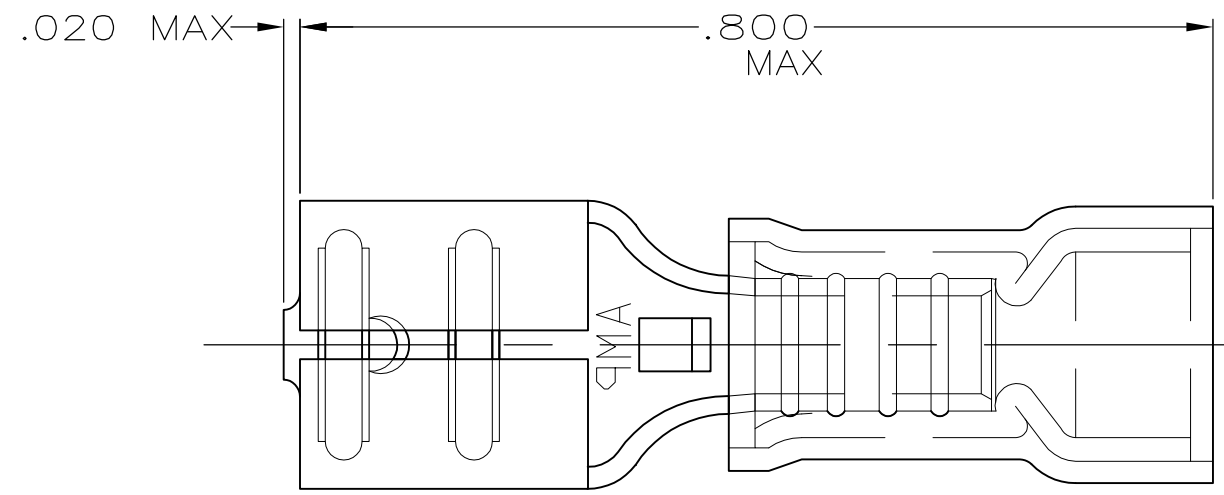
- Packaging Method = Tape Mounted

#### Other:

- Proprietary Name = PIDG FASTON
- Brand = AMP

THIS DRAWING IS UNPUBLISHED. RELEASED FOR PUBLICATION  
 © COPYRIGHT - By - ALL RIGHTS RESERVED.

LOC	DIST	REVISIONS					
		P	LTR	DESCRIPTION	DATE	DWN	APVD
G	14		L3	REVISED PER ECO-11-004587	11MAR11	RK	HMR



- 1 INSULATION DIA .135 MAX
- 2 FITS TAB .020 THK
- △ 3 SUPERSEDED BY 8-640917-1

QTY	PACKAGE TYPE	PART NO
50	LOOSE PC,BAG	8-640917-5
100	LOOSE PC,BOX	8-640917-1
-	TAPE MOUNTED	640917-2
-	LOOSE PIECE	640917-1

**AMP INCORPORATED  
 CUSTOMER SERVICE SYSTEM**

FOR ADDITIONAL PRODUCT INFORMATION OR COPIES OF DRAWINGS AND TECHNICAL DOCUMENTS	PRODUCT INFORMATION CENTER 1-800-522-6752
FOR APPLICATION TOOLING INFORMATION	TOOLING ASSISTANCE CENTER 1-800-722-1111
FOR ORDER ENTRY	1-800-526-5142

MAX RECOMMENDED OPERATING TEMPERATURE:  
105° C MAX

VOLTAGE RATING:  
300V MAX

CIRCULAR MIL AREA:  
0.26-0.96mm<sup>2</sup>  
[509-1900]  
STRANDED

THIS DRAWING IS A CONTROLLED DOCUMENT.

DIMENSIONS:  
INCHES

TOLERANCES UNLESS OTHERWISE SPECIFIED:

0 PLC	± -
1 PLC	± -
2 PLC	± -
3 PLC	± .005
4 PLC	± -
ANGLES	± -

MATERIAL  
BODY, BRASS .016  
SLV, NYLON, COLOR:RED

FINISH  
BODY, TIN

DWN	L OLMEDA	26JUN95
CHK	M ELLIS	26JUN95
APVD	B BARE	26JUN95
PRODUCT SPEC	-	-
APPLICATION SPEC	-	-
WEIGHT	-	-

**STE** TE Connectivity

NAME  
RECEPTACLE, 187 SERIES,  
FASTON™, PIDG™,  
WIRE SIZE: 22-18 AWG

SIZE	CAGE CODE	DRAWING NO	RESTRICTED TO
A3	00779	C-640917	-

CUSTOMER DRAWING SCALE NTS SHEET 1 OF 1 REV L3