



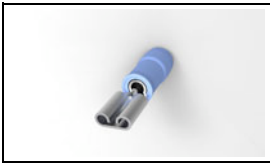
Have a Question?
 Chat with a Product
 Information Specialist

What can we help you find?

[Products](#) [Industries](#) [Resources](#) [About TE](#) [My Account](#) [Innovation](#) [Support Center](#)

640919-1 Product Details

[Share](#) [Print](#) [Email](#)



640919-1

TE Internal Number: 640919-1

Active

[View 3D PDF](#)

Quick Disconnect Receptacles - Insulated

Always EU RoHS/ELV Compliant (Statement of Compliance)

Product Highlights:

- Proprietary Name = PIDG FASTON
- Receptacle Style = Straight
- Wire Range = 1.25-2.00² [16-14] mm [AWG]
- Mating Area Interface Dimensions = 4.75 x 0.51 mm
- Insulation Diameter = 4.32 [.170] Max. mm [in]

[View all Features](#)

Quick Links

- ▶ [Pricing & Availability](#)
- ▶ [Search for Tooling](#)
- ▶ [Product Feature Selector](#)
- ▶ [Contact Us About This Product](#)

[Add to My Part List](#) [Request Sample](#) [Find Similar Products](#) [Buy Product](#)

Documentation & Additional Information	
<p>Product Drawings:</p> <ul style="list-style-type: none"> • RECEPTACLE, 187 SERIES, FASTON , PIDG , WIRE SIZE 16-14 (PDF, English) <p>Catalog Pages/Data Sheets:</p> <ul style="list-style-type: none"> • PIDG_FASTON (PDF, English) • Ultra-Fast and Ultra Fast Plus (PDF, English) <p>Product Specifications:</p> <ul style="list-style-type: none"> • None Available <p>Application Specifications:</p> <ul style="list-style-type: none"> • Pre-Insulated Diamond Grip (PIDG) FASTON Receptacle ... (PDF, English) <p>Instruction Sheets:</p> <ul style="list-style-type: none"> • None Available <p>CAD Files: (CAD Format & Compression Information)</p> <ul style="list-style-type: none"> • 2D Drawing (DXF, Version G) • 3D Model (IGES, Version G) • 3D Model (STEP, Version G) 	<p>Additional Information:</p> <ul style="list-style-type: none"> • Product Line Information <p>Related Products:</p> <ul style="list-style-type: none"> • Tooling

[List all Documents](#)

Product Features (Please use the Product Drawing for all design activity)	
<p>Product Type Features:</p> <ul style="list-style-type: none"> • Receptacle Style = Straight • Insertion Force = Normal • Finish = Tin • Dimple Type = Dimple with wire stop • Insulation Support = Insulation Support • RU (UL Component Program) = Approved • Color = Blue <p>Electrical Characteristics:</p> <ul style="list-style-type: none"> • Voltage (VAC) = 300 <p>Termination Features:</p> <ul style="list-style-type: none"> • Wire/Cable Size (CMA) = 2,050 - 5,180 <p>Dimensions:</p> <ul style="list-style-type: none"> • Mating Area Interface Dimensions (mm [in]) = 4.75 x 0.51 [.187 x .020] • Insulation Diameter (mm [in]) = 4.32 [.170] Max. 	<p>Body Features:</p> <ul style="list-style-type: none"> • Fully Insulated = No • Wire Range (mm [AWG]) = 1.25-2.00² [16-14] • Material = Brass • Insulation Material = Nylon • Stock Thickness (mm [in]) = 0.41 [0.016] <p>Industry Standards:</p> <ul style="list-style-type: none"> • RoHS/ELV Compliance = RoHS compliant, ELV compliant • Lead Free Solder Processes = Not relevant for lead free process • RoHS/ELV Compliance History = Always was RoHS compliant • CSA Certified = Yes <p>Packaging Features:</p> <ul style="list-style-type: none"> • Packaging Method = Loose Piece <p>Other:</p> <ul style="list-style-type: none"> • Proprietary Name = PIDG FASTON • Brand = AMP

Corporate Information

[About TE](#)
[Investors](#)

Quick Links

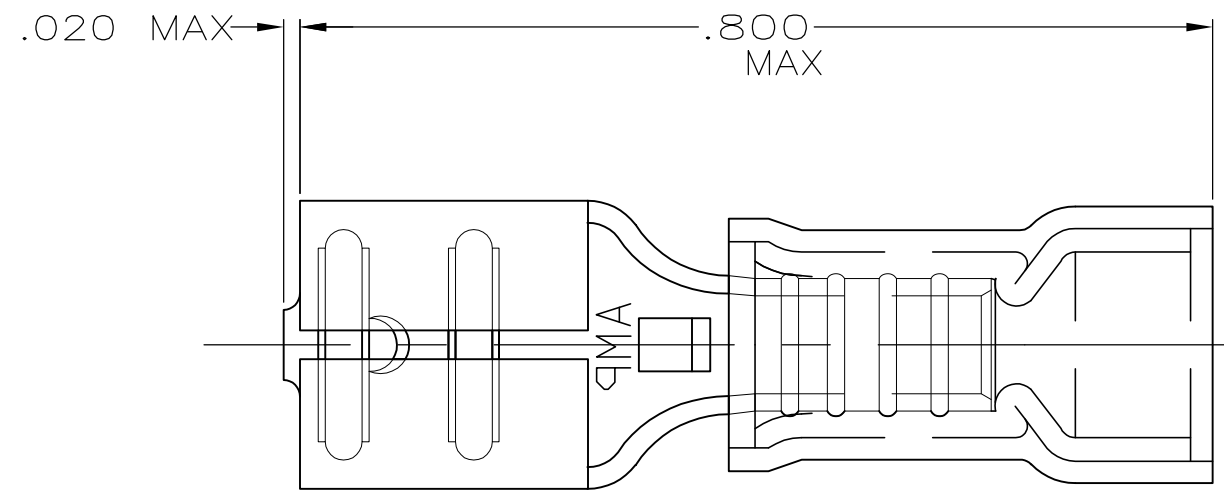
[Distributor Inventory](#)
[Product Cross Reference](#)

Customer Support

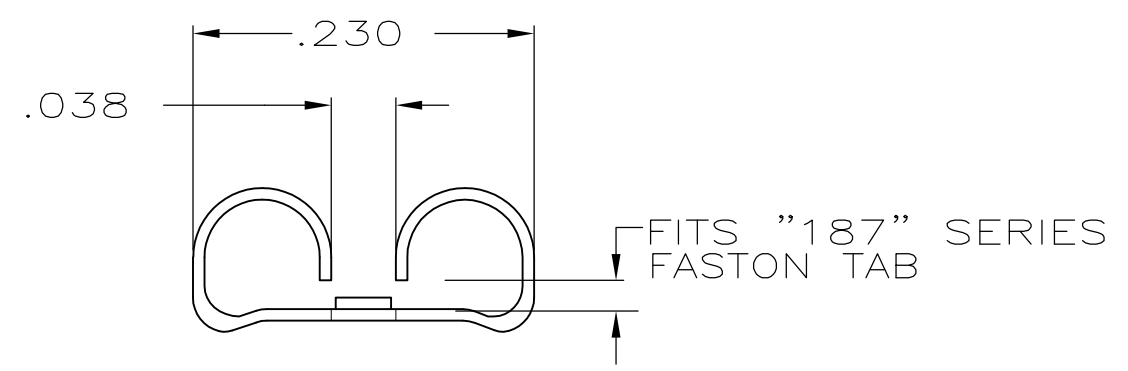
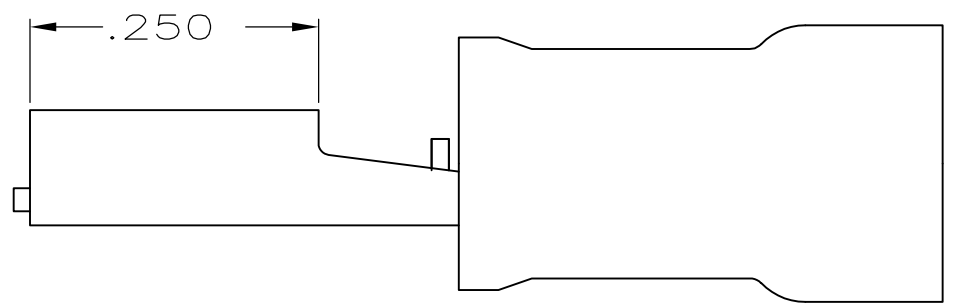
[Email or Chat With Us](#)
[Find a Phone Number](#)

THIS DRAWING IS UNPUBLISHED. RELEASED FOR PUBLICATION
 © COPYRIGHT - By - ALL RIGHTS RESERVED.

LOC	DIST	REVISIONS					
		P	LTR	DESCRIPTION	DATE	DWN	APVD
G	14		G1	REVISED PER ECO-11-004820	11MAR11	RK	HMR



- 1. INSULATION DIA .170 MAX
- 2. FITS TAB .020 THK



QTY	PACKAGE TYPE	PART NO
100	LOOSE PC,BOX	8-640919-1
-	TAPE MOUNTED	640919-2
-	LOOSE PIECE	640919-1

AMP INCORPORATED
CUSTOMER SERVICE SYSTEM

FOR ADDITIONAL PRODUCT INFORMATION OR COPIES OF DRAWINGS AND TECHNICAL DOCUMENTS	PRODUCT INFORMATION CENTER 1-800-522-6752
FOR APPLICATION TOOLING INFORMATION	TOOLING ASSISTANCE CENTER 1-800-722-1111
FOR ORDER ENTRY	1-800-526-5142

MAX RECOMMENDED OPERATING TEMPERATURE:
 VOLTAGE RATING:
 CIRCULAR MIL AREA:

THIS DRAWING IS A CONTROLLED DOCUMENT.

DIMENSIONS: INCHES	TOLERANCES UNLESS OTHERWISE SPECIFIED:
	0 PLC ± -
	1 PLC ± -
	2 PLC ± .015
	3 PLC ± -
	4 PLC ± -
	ANGLES ± -

MATERIAL: BODY, BRASS .016 SLV, NYLON, COLOR, BLUE

FINISH: BODY, TIN

DWN	L OLMEDA	26JUN95
CHK	M ELLIS	26JUN95
APVD	B BARE	26JUN95
PRODUCT SPEC		
APPLICATION SPEC		
WEIGHT	-	

STE TE Connectivity

RECEPTACLE, 187 SERIES, FASTON™, PIDG™, WIRE SIZE 16-14

SIZE	CAGE CODE	DRAWING NO	RESTRICTED TO
A3	00779	C-640919	-

CUSTOMER DRAWING SCALE NTS SHEET 1 OF 1 REV G1