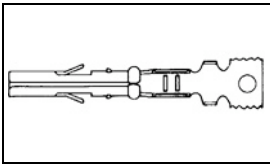


641294-2 Product Details

[Share](#) [Print](#) [Email](#)



641294-2

TE Internal Number: 641294-2

Active

[View 3D PDF](#)

.165" Centerline, 250 V, 9 A max.

Always EU RoHS/ELV Compliant (Statement of Compliance)

Product Highlights:

- Wire-to-Board, Wire-to-Wire
- Contact
- Applies To Wire/Cable
- Wire/Cable Size = 18 - 26 AWG
- Wire/Cable Size = .12 - .8 mm²

[View all Features](#)

Quick Links

- ▶ [Pricing & Availability](#)
- ▶ [Search for Tooling](#)
- ▶ [Product Feature Selector](#)
- ▶ [Contact Us About This Product](#)

[Add to My Part List](#) [Request Sample](#) [Find Similar Products](#) [Buy Product](#)

Documentation & Additional Information

Product Drawings:

- [MR RECEPTACLE \(PDF, English\)](#)

Catalog Pages/Data Sheets:

- [SOFT_SHELL_PIN_AND_SOCKET_CONNECTORS_CATALOG \(PDF, English\)](#)

Product Specifications:

- [Connector, Miniature Rectangular \(MR\) \(PDF, English\)](#)

Application Specifications:

- [Miniature Rectangular Contacts and Housings \(PDF, English\)](#)

Instruction Sheets:

- None Available

CAD Files: [\(CAD Format & Compression Information\)](#)

- [2D Drawing \(DXF, Version E1\)](#)
- [3D Model \(IGES, Version E1\)](#)
- [3D Model \(STEP, Version E1\)](#)

[List all Documents](#)

Additional Information:

- [Product Line Information](#)

Related Products:

- [Tooling](#)

Product Features (Please use the Product Drawing for all design activity)

Product Type Features:

- Product Type = Contact
- Wire/Cable Type = Discrete Wire
- PCB Mount Retention = Without

Electrical Characteristics:

- Contact - Rated Current (A) = 9
- Hot Pluggable = No
- Operating Voltage Reference = AC
- Operating Voltage (VAC) = 250

Termination Features:

- Wire/Cable Size (AWG) = 18 - 26
- Wire/Cable Size (mm²) = 0.12 - 0.8
- Wire/Cable Size (CMA) = 236.823 - 1,578.82
- Termination Method to Wire/Cable = Crimp

Dimensions:

- Length (X-Axis) (mm [in]) = 16.76 [0.6598]
- Width (Z-Axis) (mm [in]) = 1.94 [0.076]
- Profile Height (Y-Axis) (mm [in]) = 1.94 [0.076]

Contact Features:

- Contact Type = Socket
- Contact Base Material = Phosphor Bronze
- Contact Plating, Mating Area, Material = Gold
- Contact Plating, Mating Area, Thickness (µm [µin]) = 0.76 [29.92]
- Contact Design = Formed Socket

Housing Features:

- Mating Alignment = Without

Configuration Features:

- Strain Relief = With

Industry Standards:

- UL Voltage Rating (VAC) = 250
- [RoHS/ELV Compliance](#) = RoHS compliant, ELV compliant
- [Lead Free Solder Processes](#) = Not relevant for lead free process
- RoHS/ELV Compliance History = Always was RoHS compliant

Environmental:

- Operating Temperature (°C [°F]) = -55 - +105 [-67 - +221]

Conditions for Usage:

- Applies To = Wire/Cable
- Accepts Wire Insulation Diameter, Range (mm [in]) = 0.635 - 2.92 [0.050 - 0.115]

Operation/Application:

- Application Use = Wire-to-Board, Wire-to-Wire
- Contact Transmits (Typical Application) = Signal (Data)/Power

Packaging Features:

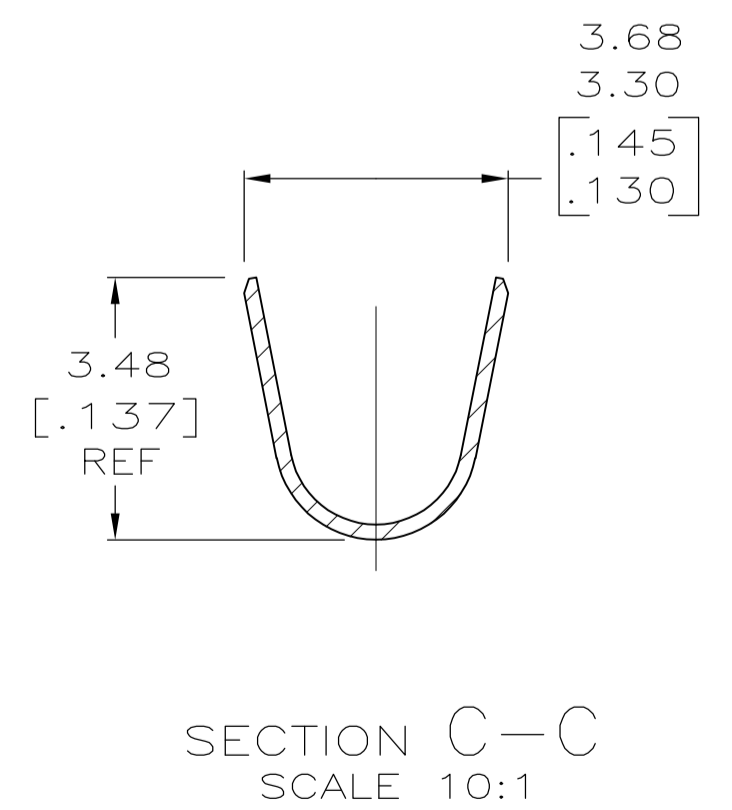
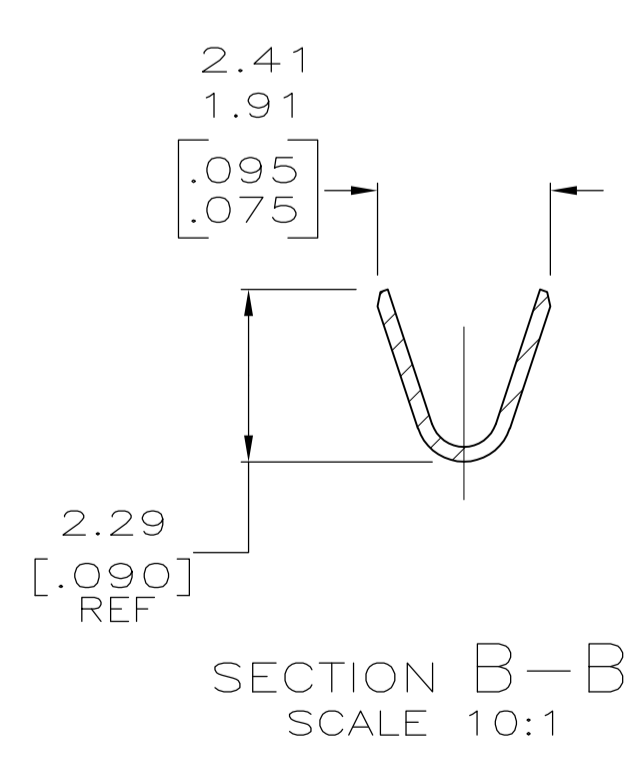
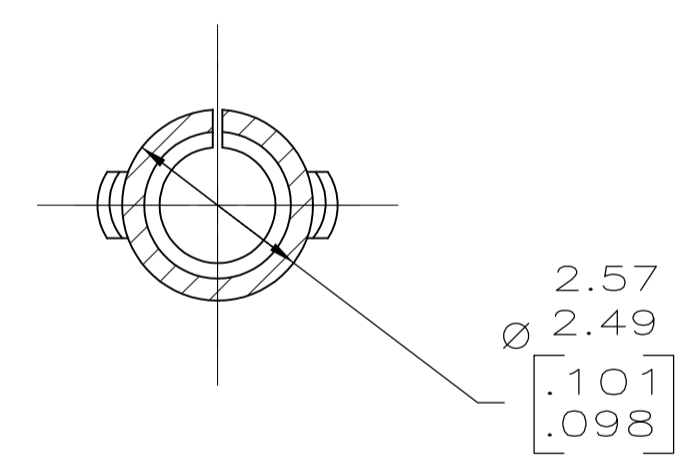
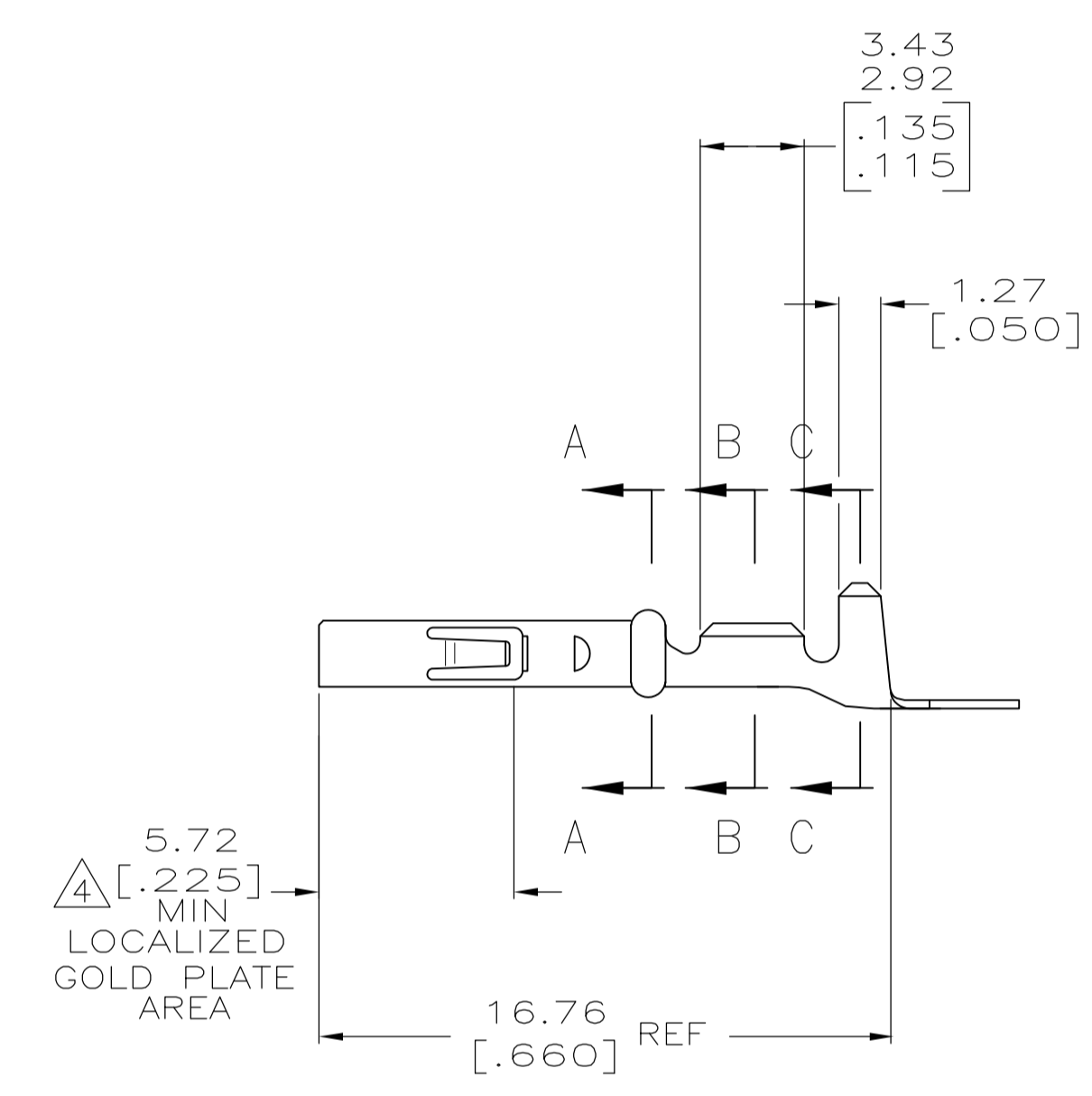
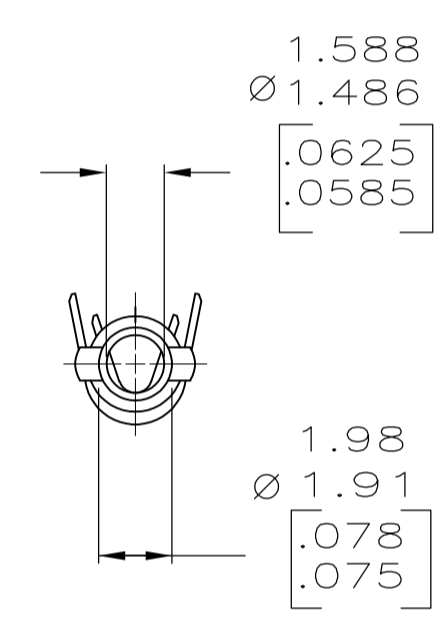
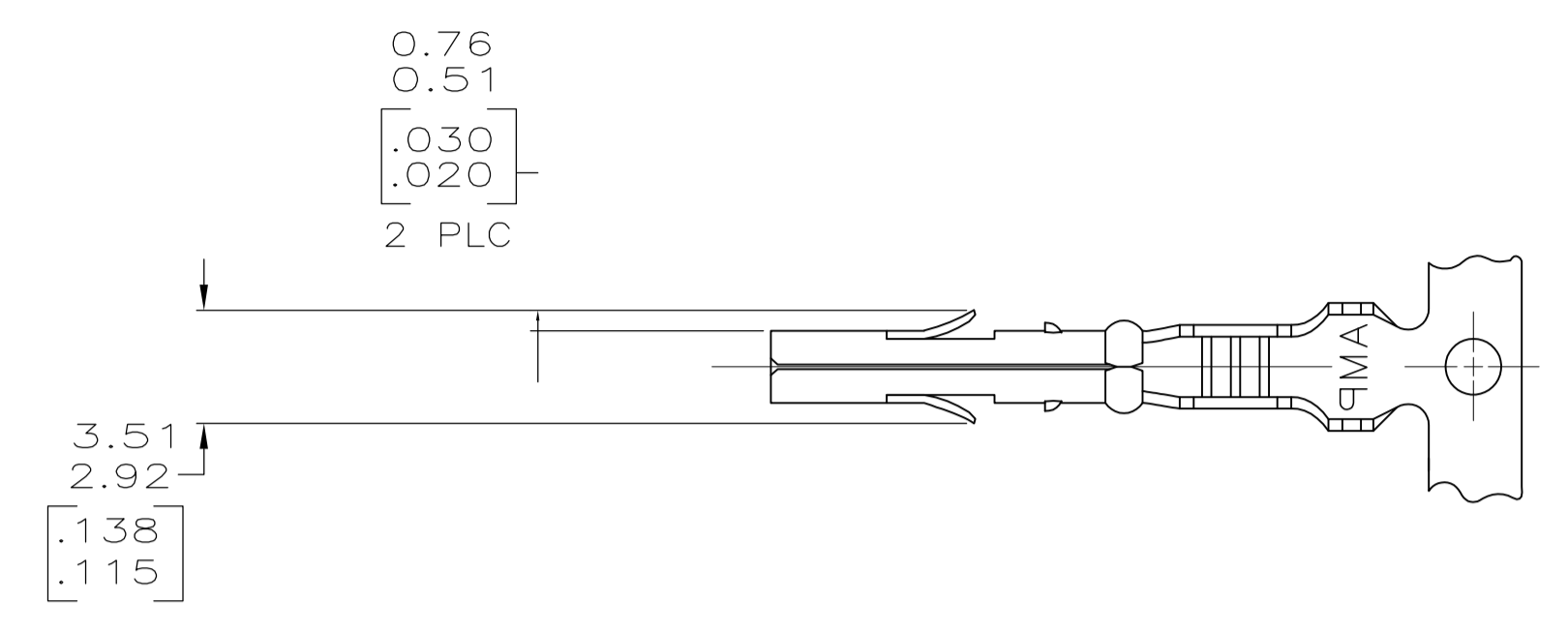
- Packaging Method = Reel

Other:

- Brand = AMP

LOC		DIST		REVISIONS			
P	LTR	DESCRIPTION	DATE	DMN	APVD		
E2		REVISED PER ECO-11-004820	11MAR11	RK	HMR		

- 1 WIRE RANGE: 0.12-0.9mm² (26-18 AWG).
- 2 INSULATION RANGE: 1.27-2.92 [.050-.115] MAX. DIA.
- 3 DIMENSIONS IN BRACKETS ARE IN INCHES.
- 4 Δ PLATE INTERNALLY WITH 0.00076 [.000030] MIN GOLD IN THE LOCALIZED GOLD PLATE AREA, GOLD FLASH ON THE REMAINDER, OVER 0.00127 [.000050] MIN NICKEL UNDERPLATE.



Δ GOLD STRIPE	0.20 [.008] PHOS BRZ	641294-2
PRE-TIN	0.20 [.008] PHOS BRZ	641294-1
FINISH	MATERIAL	PART NO

THIS DRAWING IS A CONTROLLED DOCUMENT.		DIN 9-28-94		K. SALMON	
DIMENSIONS: mm [INCHES]		TOLERANCES UNLESS OTHERWISE SPECIFIED:		CHK R. SWING 9-28-94	
0 PLC ± -		1 PLC ± -		APVD -	
2 PLC ± -		3 PLC ± 0.13 [.005]		NAME MR RECEPTACLE	
4 PLC ± -		ANGLES ± -		PRODUCT SPEC -	
MATERIAL SEE TABLE		FINISH SEE TABLE		APPLICATION SPEC -	
WEIGHT -		SIZE A1		CAGE CODE 00779	
CUSTOMER DRAWING		DRAWING NO 641294		RESTRICTED TO -	
SCALE 5:1		SHEET 1 OF 1		REV E2	

METRIC