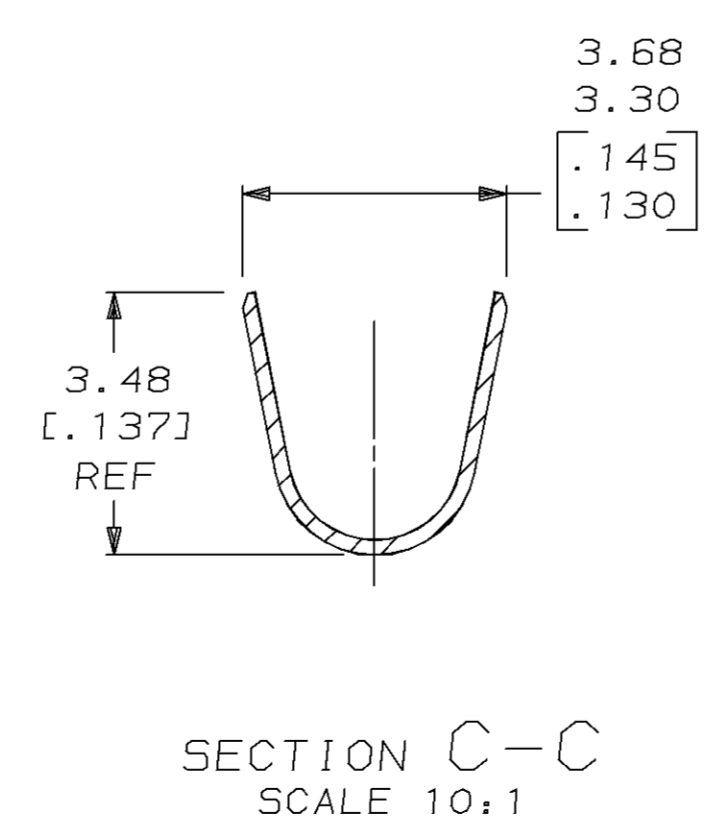
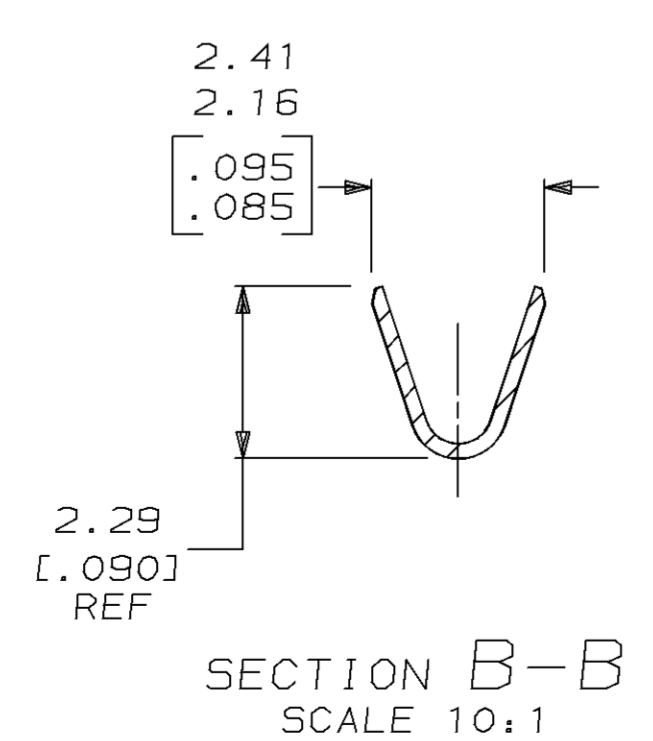
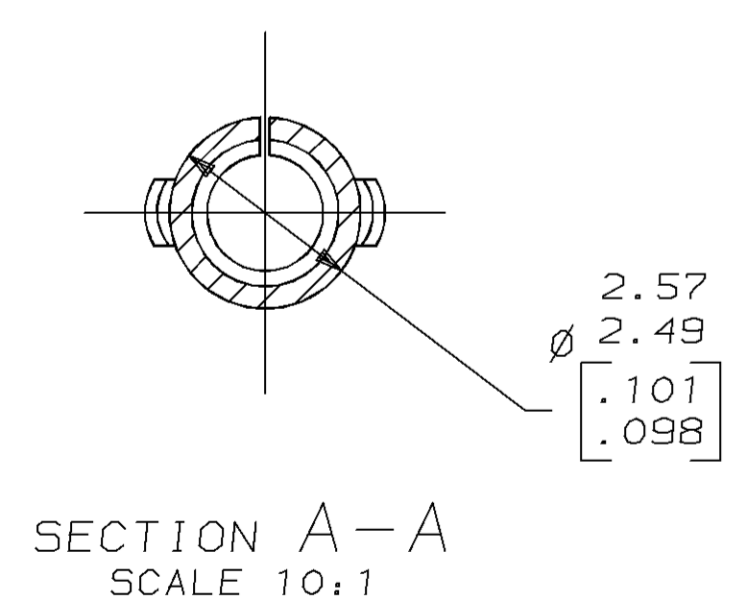
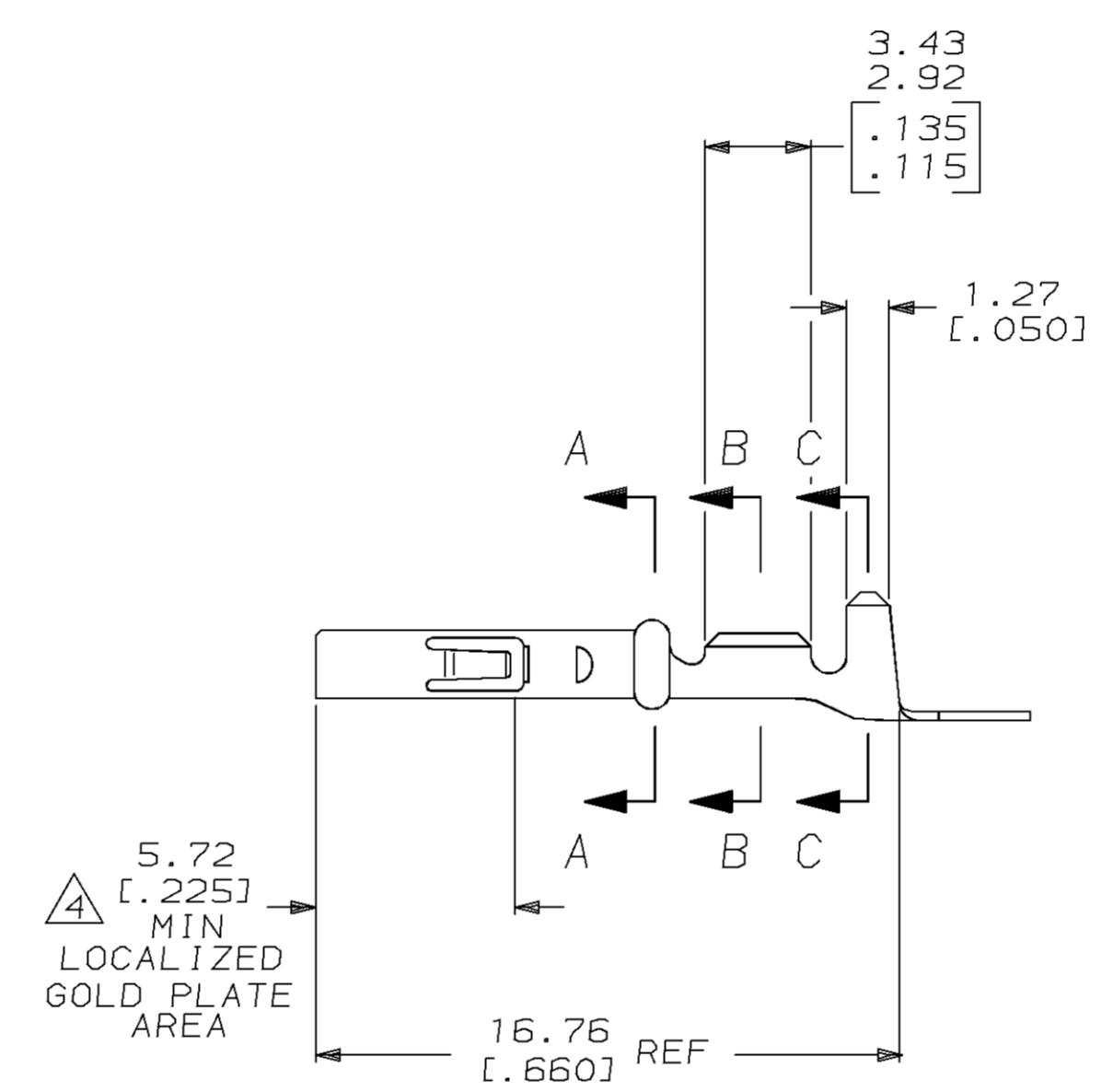
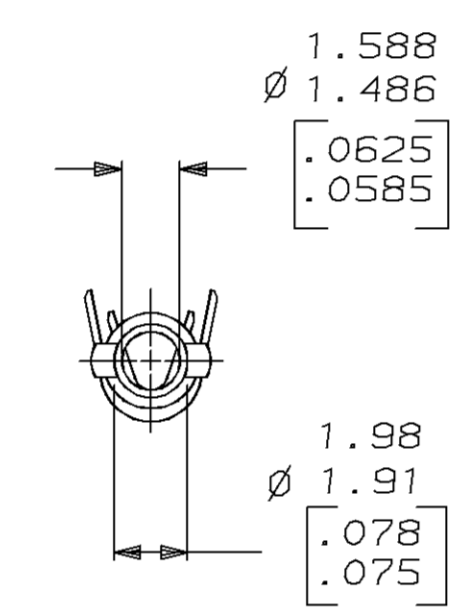
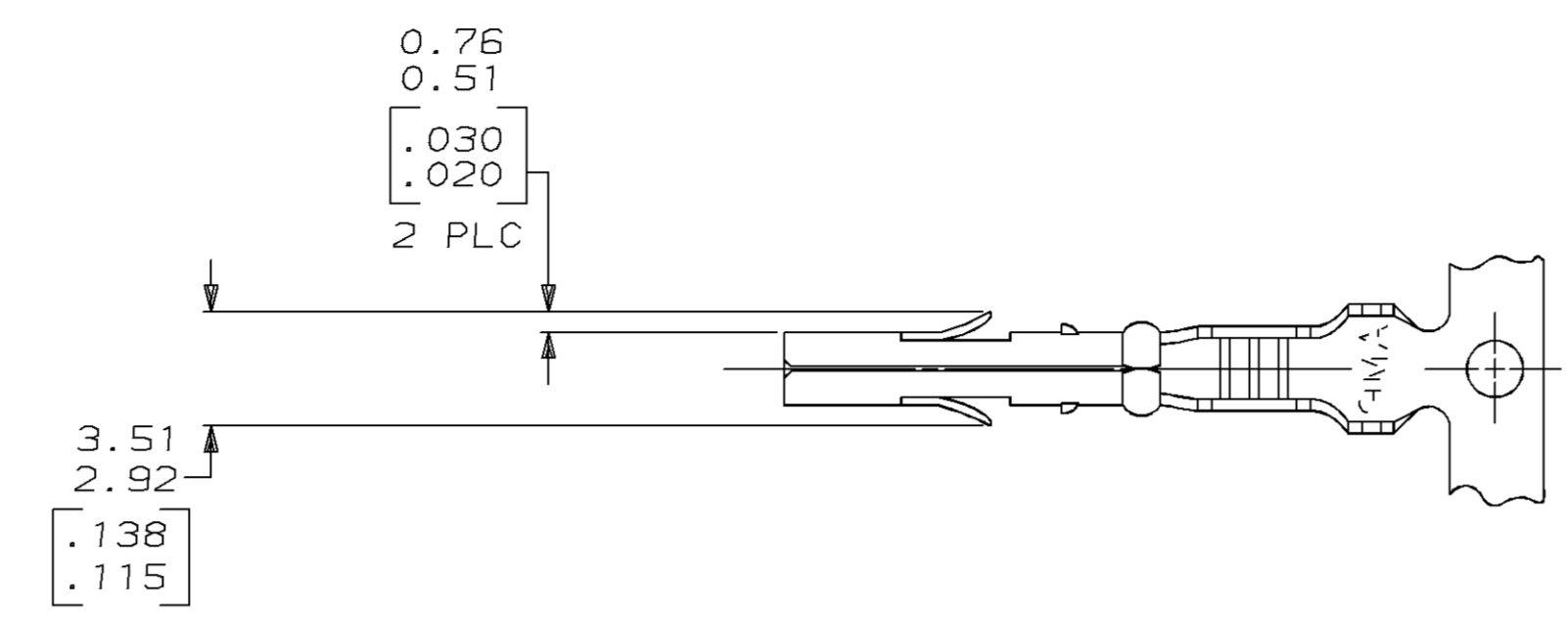


LOC		DIST		P		F		ZONE		LTR		REVISIONS			
CM	52											DESCRIPTION	DATE	APPD	
												E	REV PER EC 0730-0004-95	2-9-95	JH

- 1 WIRE RANGE: 0.12-0.9mm² (26-18 AWG).
 - 2 INSULATION RANGE: 1.27-2.92 [.050-.115] MAX. DIA.
 - 3 DIMENSIONS IN BRACKETS ARE IN INCHES.
- △ PLATE INTERNALLY WITH 0.00076 [.000030] MIN GOLD IN THE LOCALIZED GOLD PLATE AREA, GOLD FLASH ON THE REMAINDER, OVER 0.00127 [.000050] MIN NICKEL UNDERPLATE.



FINISH	MATERIAL	PART NO
△ GOLD STRIPE	0.20 [.008] PHOS BRZ	641294-2
PRE-TIN	0.20 [.008] PHOS BRZ	641294-1

DO NOT SCALE PRINT. UNLESS SPECIFIED DIMENSIONS IN mm [INCHES] TOLERANCES ON:	DR 9-28-94 K. SALMON	AMP Incorporated Harrisburg, PA 17105-3608
2 PLC DEC ± -	CHK 9-28-94 R. SWING	
3 PLC DEC ± 0.13 [.005]	APPD 9-28-94 W. LONG	
ANGLES ± -	APPD 9-28-94 W. LONG	
MATERIAL	APPD 9-28-94 W. LONG	NAME
SEE TABLE	PRODUCT SPEC	MR RECEPTACLE
FINISH	APPLICATION SPEC	SIZE
SEE TABLE	-	D 00779
	WEIGHT	CAGE CODE
		00779
		DRAWING NO
		©-641294
		SCALE
		5:1
		SHEET
		1 OF 1

METRIC

THIS DRAWING IS A CONTROLLED DOCUMENT FOR AMP INCORPORATED. IT IS SUBJECT TO CHANGE AND THE CONTROLLING ENGINEERING ORGANIZATION SHOULD BE CONTACTED FOR THE LATEST REVISION.