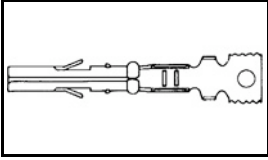


## 641300-1 Product Details

[Share](#) [Print](#) [Email](#)



641300-1

TE Internal Number: 641300-1

Active

[View 3D PDF](#)

**.165" Centerline, 250 V, 9 A max.**

Always EU RoHS/ELV Compliant  
(Statement of Compliance)

**Product Highlights:**

- Wire-to-Board, Wire-to-Board / Wire-to-Wire, Wire-to-Wire
- Contact
- Applies To Wire/Cable
- Wire/Cable Size = 18 - 26 AWG
- Wire/Cable Size = .12 - .8 mm<sup>2</sup>

[View all Features](#)

**Quick Links**

- ▶ [Pricing & Availability](#)
- ▶ [Search for Tooling](#)
- ▶ [Product Feature Selector](#)
- ▶ [Contact Us About This Product](#)

[Add to My Part List](#)   [Request Sample](#)   [Find Similar Products](#)  
[Buy Product](#)

### Documentation & Additional Information

**Product Drawings:**

- [RECEPTACLE, LOOSE PIECE, MR](#) (PDF, English)

**Catalog Pages/Data Sheets:**

- [SOFT\\_SHELL\\_PIN\\_AND\\_SOCKET\\_CONNECTORS\\_CATALOG](#) (PDF, English)

**Product Specifications:**

- [Connector, Miniature Rectangular \(MR\)](#) (PDF, English)

**Application Specifications:**

- [Miniature Rectangular Contacts and Housings](#) (PDF, English)

**Instruction Sheets:**

- None Available

**CAD Files:** ([CAD Format & Compression Information](#))

- [2D Drawing](#) (DXF, Version B)
- [3D Model](#) (IGES, Version B)
- [3D Model](#) (STEP, Version B)

[List all Documents](#)

**Additional Information:**

- [Product Line Information](#)

**Related Products:**

- [Tooling](#)

### Product Features (Please use the Product Drawing for all design activity)

**Product Type Features:**

- Product Type = Contact
- Strain Relief = With
- Wire/Cable Type = Discrete Wire
- Termination Method to Wire/Cable = Crimp
- PCB Mount Retention = Without

**Electrical Characteristics:**

- Contact - Rated Current (A) = 9
- Hot Pluggable = No
- Operating Voltage Reference = AC
- Operating Voltage (VAC) = 250

**Termination Features:**

- Wire/Cable Size (AWG) = 18 - 26
- Wire/Cable Size (mm<sup>2</sup>) = 0.12 - 0.8
- Wire/Cable Size (CMA) = 236.823 - 1,578.82

**Housing Features:**

- Mating Alignment = Without

**Industry Standards:**

- UL Voltage Rating (VAC) = 250
- [RoHS/ELV Compliance](#) = RoHS compliant, ELV compliant
- [Lead Free Solder Processes](#) = Not relevant for lead free process
- RoHS/ELV Compliance History = Always was RoHS compliant

**Environmental:**

- Operating Temperature (°C [°F]) = -55 - +105 [-67 - +221]

**Conditions for Usage:**

**Dimensions:**

- Length (X-Axis) (mm [in]) = 16.76 [0.6598]
- Width (Z-Axis) (mm [in]) = 1.94 [0.076]
- Profile Height (Y-Axis) (mm [in]) = 1.94 [0.076]

**Contact Features:**

- Contact Type = Socket
- Contact Base Material = Phosphor Bronze
- Contact Plating, Mating Area, Material = Pre-Tin
- Contact Plating, Mating Area, Thickness ( $\mu\text{m}$  [ $\mu\text{in}$ ]) = 0.4 [15.75]
- Contact Design = Formed Socket

- Applies To = Wire/Cable
- Accepts Wire Insulation Diameter, Range (mm [in]) = 0.635 – 2.92 [0.050 – 0.115]

**Operation/Application:**

- Application Use = Wire-to-Board, Wire-to-Board / Wire-to-Wire, Wire-to-Wire
- Contact Transmits (Typical Application) = Signal (Data)/Power

**Packaging Features:**

- Packaging Method = Bag

**Other:**

- Brand = AMP

**Corporate Information**

[About TE](#)  
[Investors](#)  
[News Room](#)  
[Supplier Portal](#)  
[Careers](#)  
[Terms & Conditions](#)  
[Privacy Policy](#)

**Quick Links**


[Distributor Inventory](#)  
[Product Cross Reference](#)  
[Documents & Drawings](#)  
[Product Compliance Support Center](#)  
[Site Map](#)

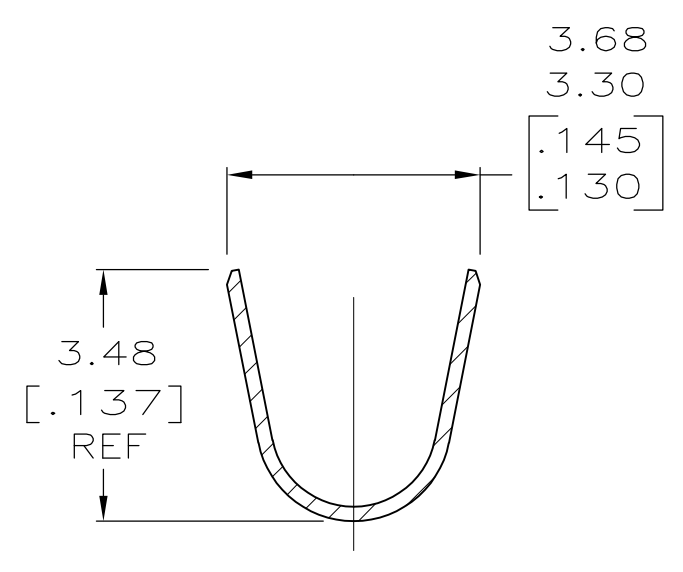
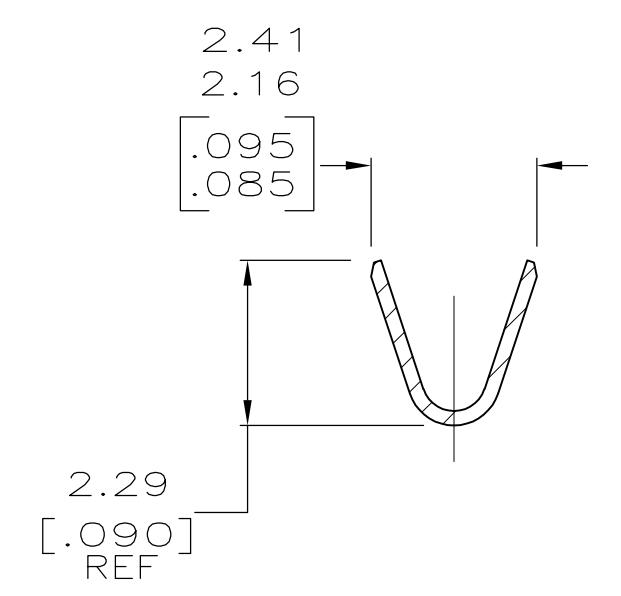
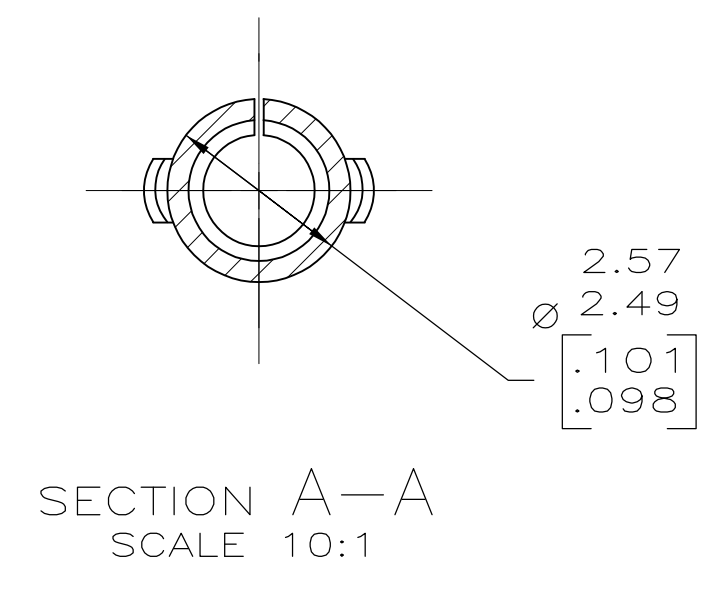
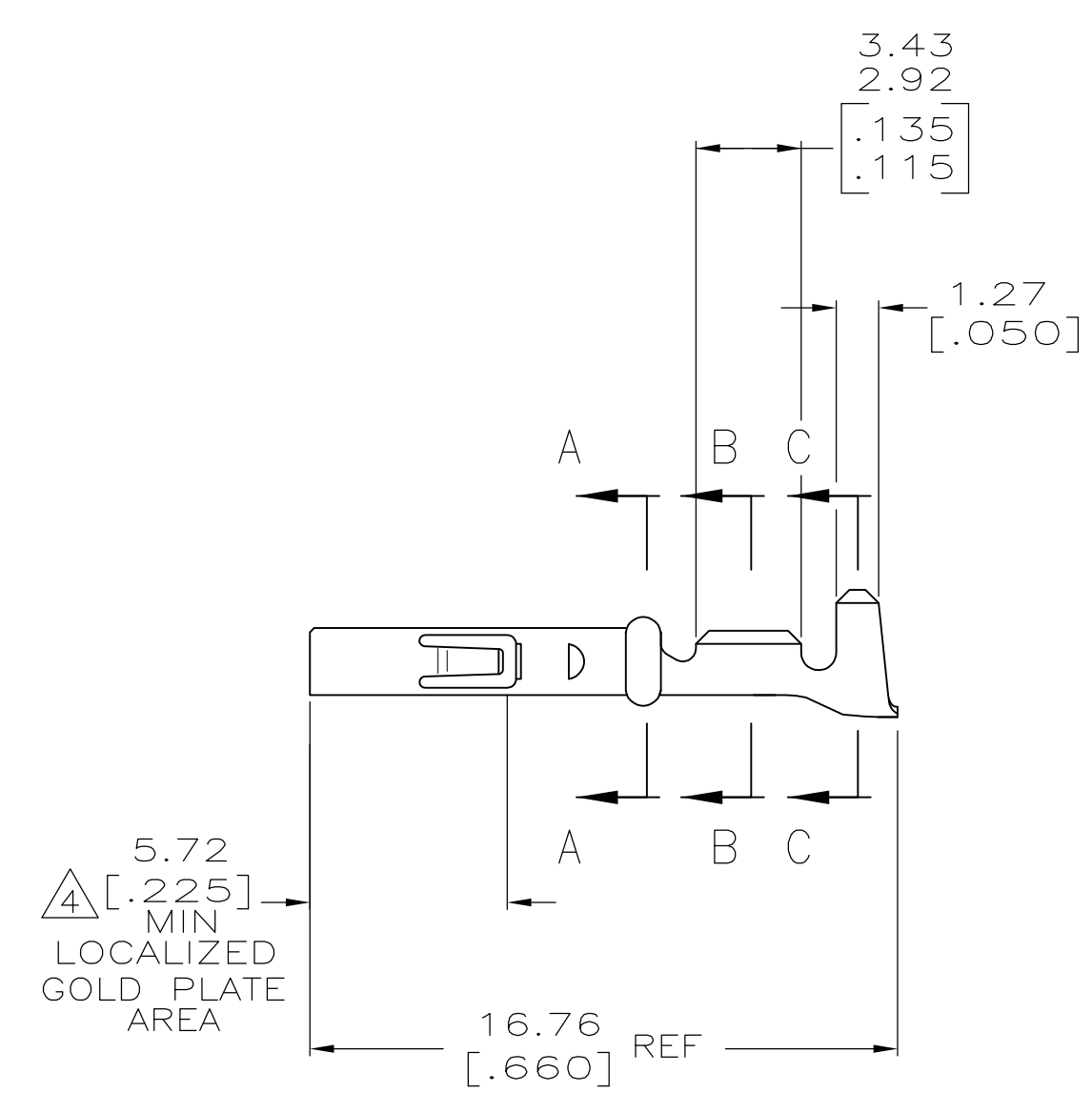
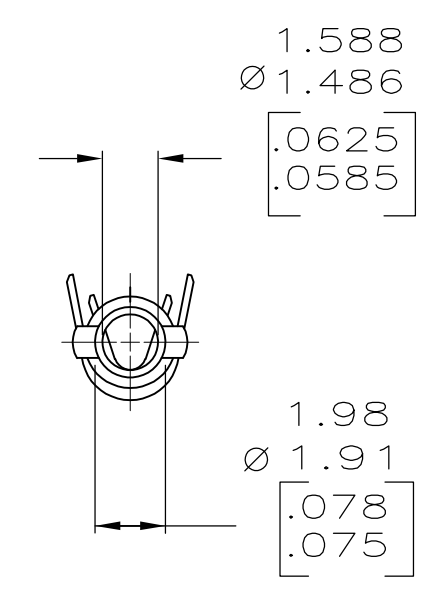
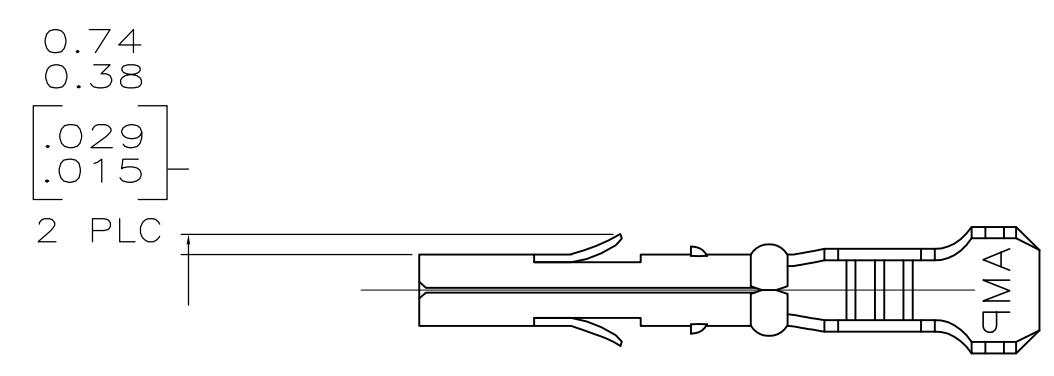
**Customer Support**


[Email or Chat With Us](#)  
[Find a Phone Number](#)  
[Knowledge Base](#)  
[Manage Your Account](#)


**Keep Me Informed**

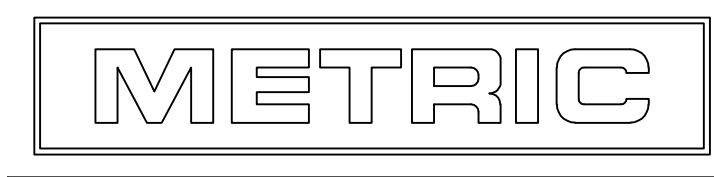
LOC		DIST		REVISIONS			
CM	52	P	LTR	DESCRIPTION	DATE	DWN	APPD
		B1		REVISED PER ECO-11-004820	11MAR11	RK	HMR

- 1 WIRE RANGE: 0.12-0.9mm<sup>2</sup> (26-18 AWG).
- 2 INSULATION RANGE: 1.27-2.92 [.050-.115] MAX. DIA.
- 3 DIMENSIONS IN BRACKETS ARE IN INCHES.
- 4  PLATE INTERNALLY WITH 0.00076 [.000030] MIN GOLD IN THE LOCALIZED GOLD PLATE AREA, GOLD FLASH ON THE REMAINDER, OVER 0.00127 [.000050] MIN NICKEL UNDERPLATE.



 GOLD STRIPE	0.20 [.008] PHOS BRZ	641300-2
PRE-TIN	0.20 [.008] PHOS BRZ	641300-1

FINISH		MATERIAL		PART NO	
THIS DRAWING IS A CONTROLLED DOCUMENT.					
DIMENSIONS: MM [INCHES]		TOLERANCES UNLESS OTHERWISE SPECIFIED:		APPROVALS	
0 PLC	± -	0	K. SALMON	3-21-95	 TE Connectivity RECEPTACLE, LOOSE PIECE, MR
2 PLC	± -	1	R. SWING	3-21-95	
3 PLC	± 0.13 [.005]	2	W. LONG	3-21-95	
4 PLC	± -	3			
MATERIAL SEE TABLE		FINISH SEE TABLE		CUSTOMER DRAWING	
SIZE		CAGE CODE		DRAWING NO	
A1		00779		C=641300	
SCALE		SHEET		REV	
5:1		1 OF 1		B1	



THIS DRAWING IS A CONTROLLED DOCUMENT FOR AMP INCORPORATED. IT IS SUBJECT TO CHANGE AND THE CONTROLLING ENGINEERING ORGANIZATION SHOULD BE CONTACTED FOR THE LATEST REVISION.