

641776-1 Product Details



641776-1

TE Internal Number: 641776-1



Soft Shell - Accessories

 Always EU RoHS/ELV Compliant (Statement of Compliance)

Product Highlights:

- Accessory Type = Strain Relief
- Universal MATE-N-LOK
- Nylon Housing Material
- Color = White
- Number of Circuits = 4

Documentation & Additional Information

Product Drawings:

- [STRAIN RELIEF AND INSERT, UNIVERSAL MATE-N-LOK, 4 CI...](#) (PDF, English)

Catalog Pages/Data Sheets:

- [2_PIECE_POWER_CONNECTORS_qrg_4-1773458-1](#) (PDF, English)
- [SOFT_SHELL_PIN_SOCKET_CONNECTORS_STANDARD_DENSITY](#) (PDF, English)

Product Specifications:

- None Available

Application Specifications:

- None Available

Instruction Sheets:

- [Universal MATE-N-LOK Connectors](#) (PDF, English)

CAD Files: (CAD Format & Compression Information)

- [2D Drawing](#) (DXF, Version E)
- [3D Model](#) (IGES, Version E)
- [3D Model](#) (STEP, Version E)

Related Products:

- [Tooling](#)

Product Features (Please use the Product Drawing for all design activity)

Product Type Features:

- [Accessory Type](#) = Strain Relief
- [Connector Line](#) = Universal MATE-N-LOK
- [Color](#) = White

Body Features:

- [Insert Supplied](#) = Yes
- [Wire Diameter Range](#) (mm [in]) = 1.02 – 4.83 [0.040 – 0.190]

Contact Features:

- [Contact Layout](#) = In-Line

Housing Features:

- [Housing Material](#) = Nylon
- [UL Flammability Rating](#) = UL 94V-0

Configuration Features:

- [Number of Circuits](#) = 4

Industry Standards:

- [RoHS/ELV Compliance](#) = RoHS compliant, ELV compliant
- [Lead Free Solder Processes](#) = Not relevant for lead free process
- [RoHS/ELV Compliance History](#) = Always was RoHS compliant

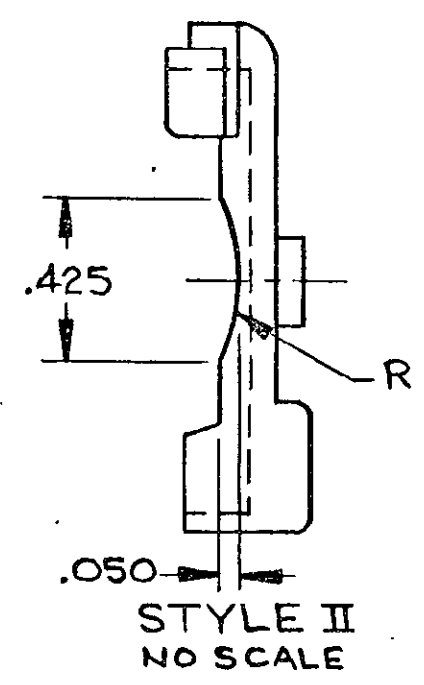
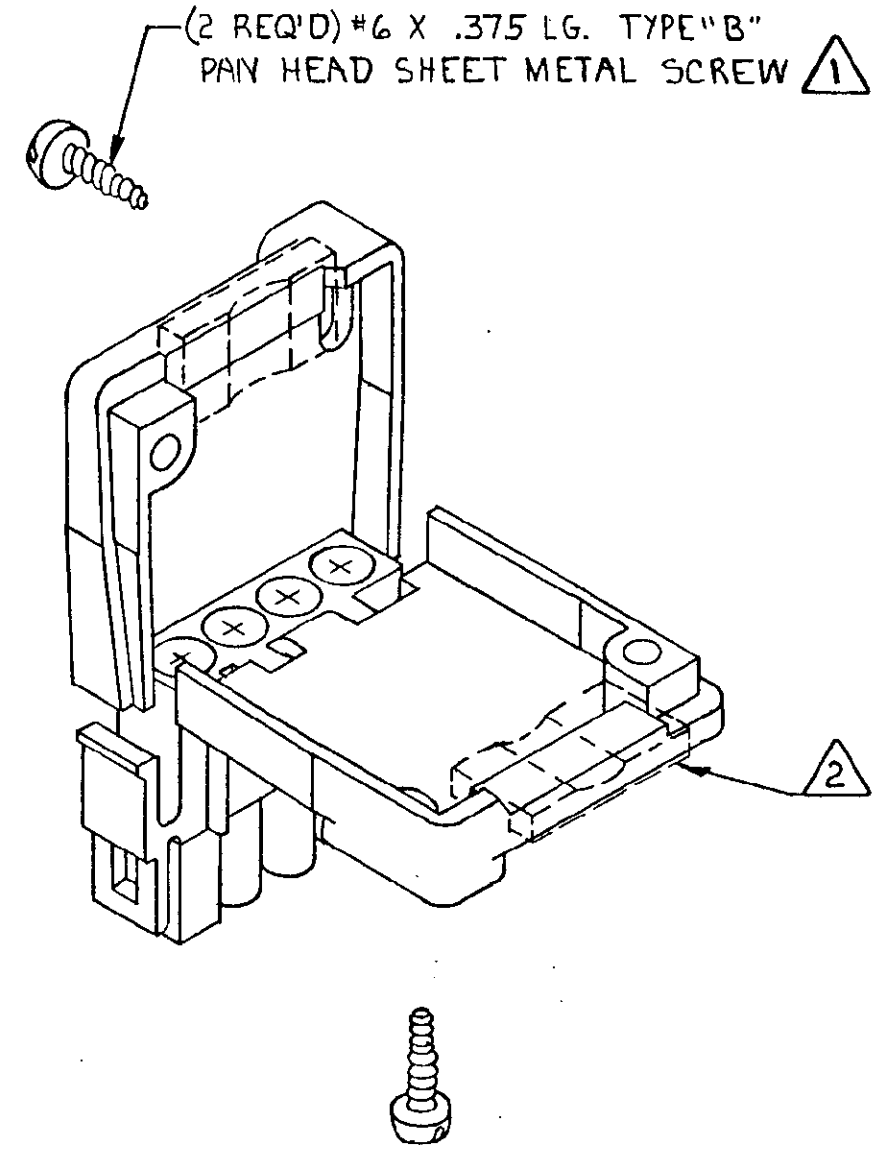
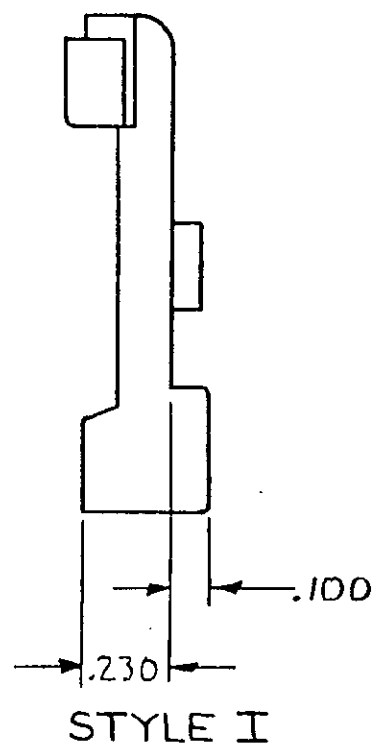
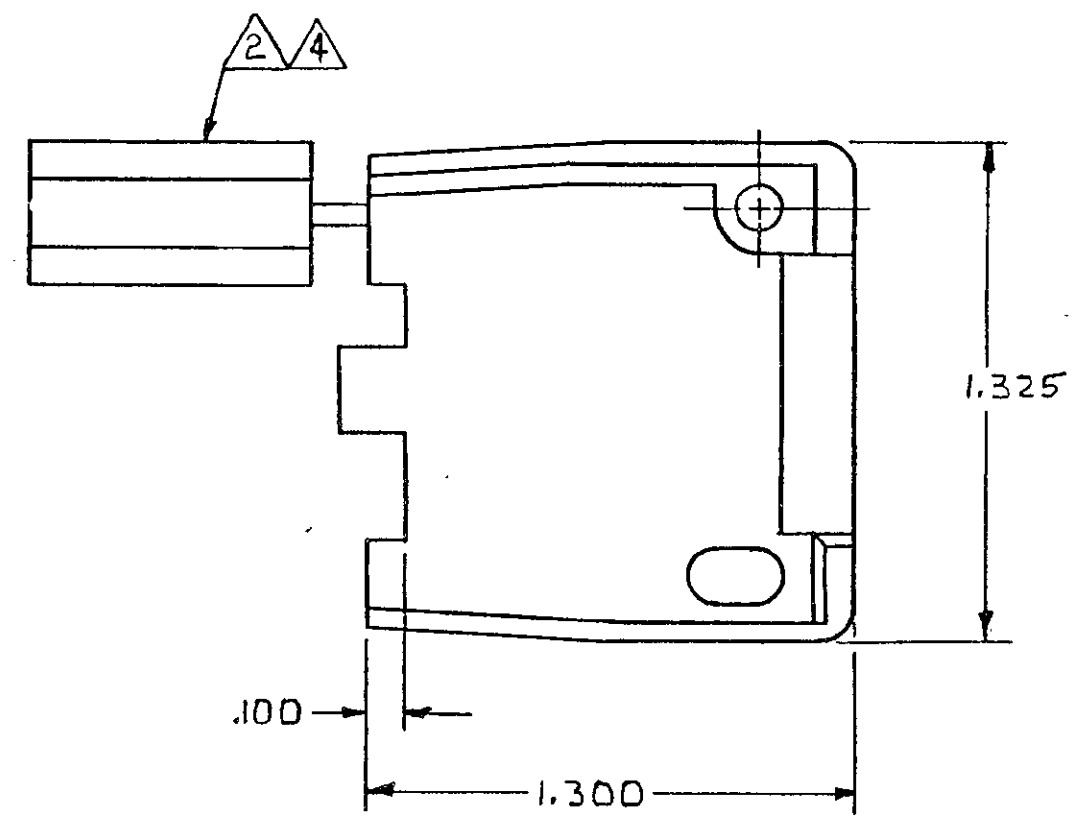
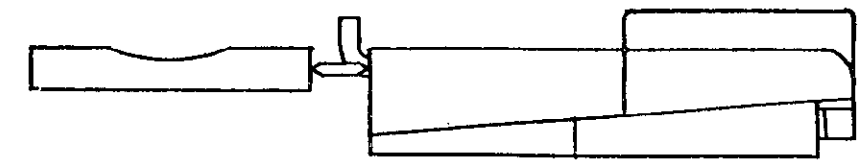
Other:

- [Brand](#) = AMP
- [Comment](#) = Must use cap housing adapters when attaching strain reliefs to a cap housing. Two adapters required per housing.; Strain relief part number represents one half of a strain relief. Two of a part number are required per connector.

REVISIONS				DATE	APPROVED
P	F	ZONE	LTR		
		E1		REVISED PER ECO-11-005139	28MAR11 RK HMR

- 1 SHEET METAL SCREWS NOT SUPPLIED.
- 2 INSERT IS ATTACHED TO STRAIN RELIEF. AS AN ADDITIONAL ADJUSTMENT FOR SMALL WIRE BUNDLES, IT SHOULD BE CUT OFF AND POSITIONED AS SHOWN BY DOTTED LINES.
- 3 TWO REQUIRED PER CONNECTOR.
- 4 STYLE II DOES NOT INCLUDE INSERT.
- 5. DETACHABLE INSERT MAY SEPARATE FROM STRAIN RELIEF BODY DURING SHIPPING.

-2 WAS CP83-3/591-2



WIRE BUNDLE	
WITHOUT INSERT	MAX 4 @ .190 DIA
WITH INSERT	MIN 4 @ .040 DIA

UNLESS OTHERWISE SPECIFIED DIMENSIONS ARE IN INCHES. TOLERANCES ON: DECIMALS ± .015 ANGLES ± —	CONTRACT NO
MATERIAL	DR M.FEHER 1-22-81
COLOR	CHK J.S. Heide 1/28/81
SEE TABLE	APPR J.C. M... 1-28-81
SEE TABLE	APPR
	DSGN APPD
	OTHER APPD

NYLON94V-0	II	641776-2
NYLON94V-0	I	641776-1
MATERIAL	STYLE	PART NO



NAME	
STRAIN RELIEF AND INSERT, UNIVERSAL MATE-N-LOK™, 4 CIRCUIT	
SIZE	CODE IDENT NO
C	00779
DRAWING NO	
641776	
SCALE	SHEET
2-1	1 OF 1

641776