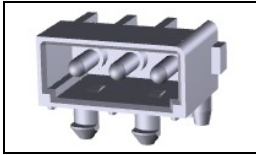


643488-1 Product Details

[Share](#) [Print](#) [Email](#)



643488-1

TE Internal Number: 643488-1

Active

[View 3D PDF](#)

.200" Centerline, 250 V, 13 A max.

Always EU RoHS/ELV Compliant (Statement of Compliance)

Product Highlights:

- Commercial MATE-N-LOK Product Line
- Wire-to-Board
- Applies To Printed Circuit Board
- Connector
- Header

[View all Features](#)

Quick Links

- ▶ [Pricing & Availability](#)
- ▶ [Search for Tooling](#)
- ▶ [View Mating Products \(3\)](#)
- ▶ [Product Feature Selector](#)
- ▶ [Contact Us About This Product](#)

[Add to My Part List](#)

[Request Sample](#)

[Find Similar Products](#)

[Buy Product](#)

Documentation & Additional Information

Product Drawings:

- [P.C. HEADER ASSEMBLY, RIGH ANGLE MOUNT, 3 CIRCUIT, C...](#) (PDF, English)

Catalog Pages/Data Sheets:

- [SOFT_SHELL_PIN_SOCKET_CONNECTORS_STANDARD_DENSITY](#) (PDF, English)

Product Specifications:

- None Available

Application Specifications:

- [Commercial MATE-N-LOK Pin And Socket Contacts](#) (PDF, English)
- [MATE-N-LOK Commercial Pin and Socket Contacts](#) (PDF, Japanese)

Instruction Sheets:

- None Available

CAD Files: (CAD Format & Compression Information)

- [2D Drawing](#) (DXF, Version A1)
- [3D Model](#) (IGES, Version A1)
- [3D Model](#) (STEP, Version A1)

[List all Documents](#)

Additional Information:

- [Product Line Information](#)

Related Products:

- [Tooling](#)
- [Mating Products \(3\)](#)

Product Features (Please use the Product Drawing for all design activity)

Product Type Features:

- Product Line = Commercial MATE-N-LOK
- Product Type = Connector
- Connector Type = Header
- PCB Mounting Orientation = Right Angle
- PCB Mount Retention = With
- PCB Mount Retention Type = Boardlock(s)
- PCB Mount Alignment = With
- PCB Mount Alignment Type = Locating Post(s)
- Sealed = No
- UL File Number = E28476
- CSA File Number = LR 16455

Mechanical Attachment:

- Mating Retention Type = Detent Lock

Electrical Characteristics:

- Contact - Rated Current (A) = 12
- Operating Voltage Reference = AC
- Operating Voltage (VAC) = 250

Termination Features:

- Termination Method to PC Board = Through Hole - Solder

Dimensions:

- PCB Thickness, Recommended (mm [in]) = 1.57 [0.062]
- Tail Length (mm [in]) = 3.56 [0.14]

Body Features:

- Mating Retention = With

Contact Features:

- Contact Type = Pin
- Contact Plating, Mating Area, Material = Pre-Tin
- Contact Diameter (mm [in]) = 2.13 [0.084]
- Contact Base Material = Phosphor Bronze
- Contact Layout = In-Line

Housing Features:

- Housing Color = Natural
- Centerline (mm [in]) = 5.08 [0.200]
- Mating Alignment = With
- Mating Alignment Type = Polarization
- Housing Material = Nylon
- UL Flammability Rating = UL 94V-0

Configuration Features:

- Number of Positions = 3
- Number of Rows = 1

Industry Standards:

- [RoHS/ELV Compliance](#) = RoHS compliant, ELV compliant
- [Lead Free Solder Processes](#) = Wave solder capable to 240°C, Wave solder capable to 260°C, Wave solder capable to 265°C
- [RoHS/ELV Compliance History](#) = Always was RoHS compliant
- VDE Tested = No
- Agency/Standard = UL, CSA
- UL Rating = Certified, Recognized

Environmental:

- Operating Temperature (°C [°F]) = -55 - +105 [-67 - +221]

Conditions for Usage:

- Applies To = Printed Circuit Board
- For Use With = Socket (Plug) Housing

Operation/Application:

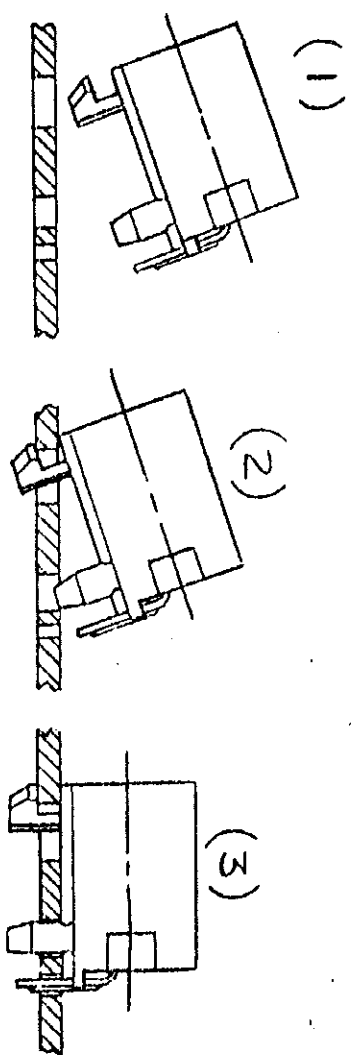
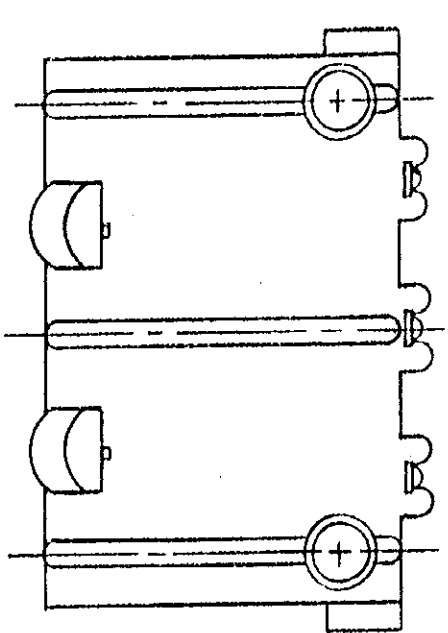
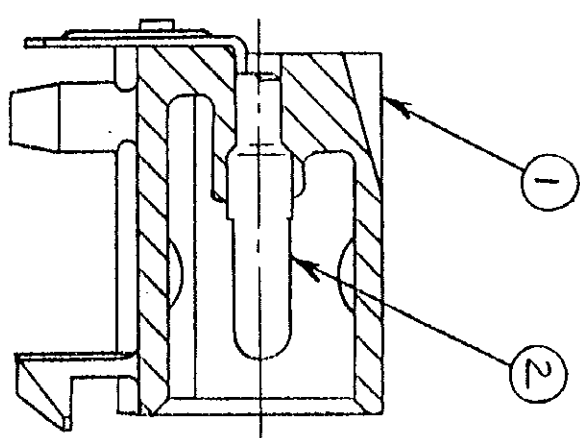
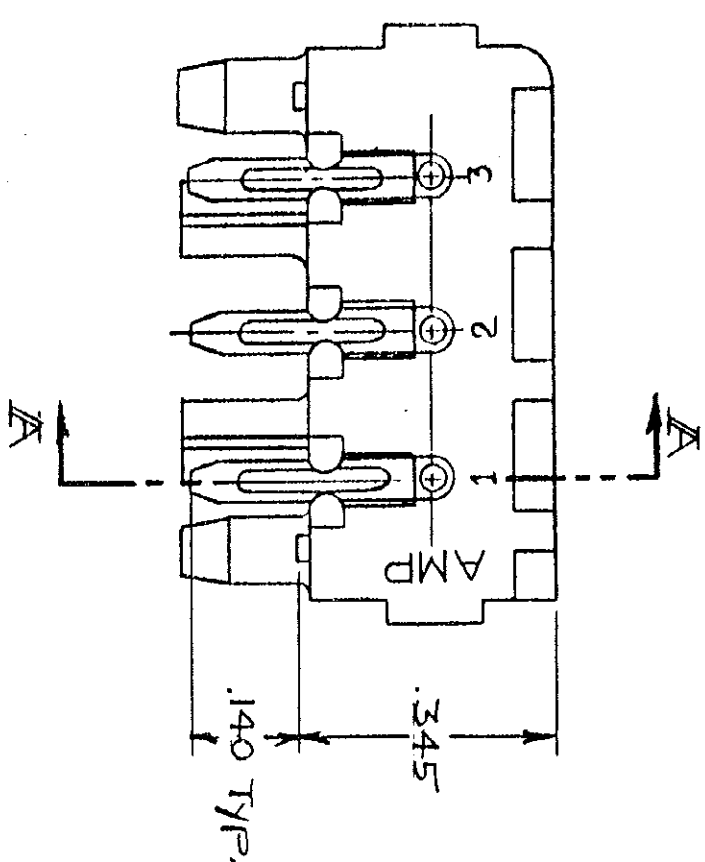
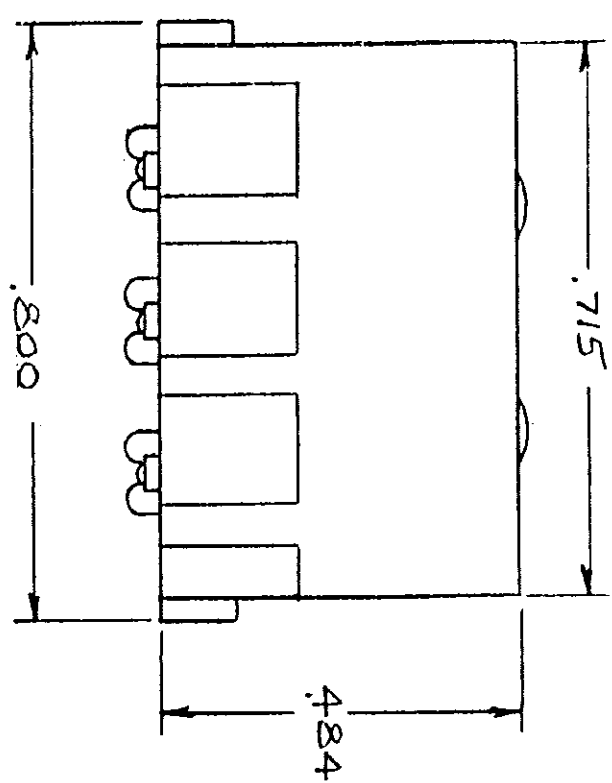
- Application Use = Wire-to-Board

Packaging Features:

- Packaging Method = Bag
- Packaging Quantity = 100

Other:

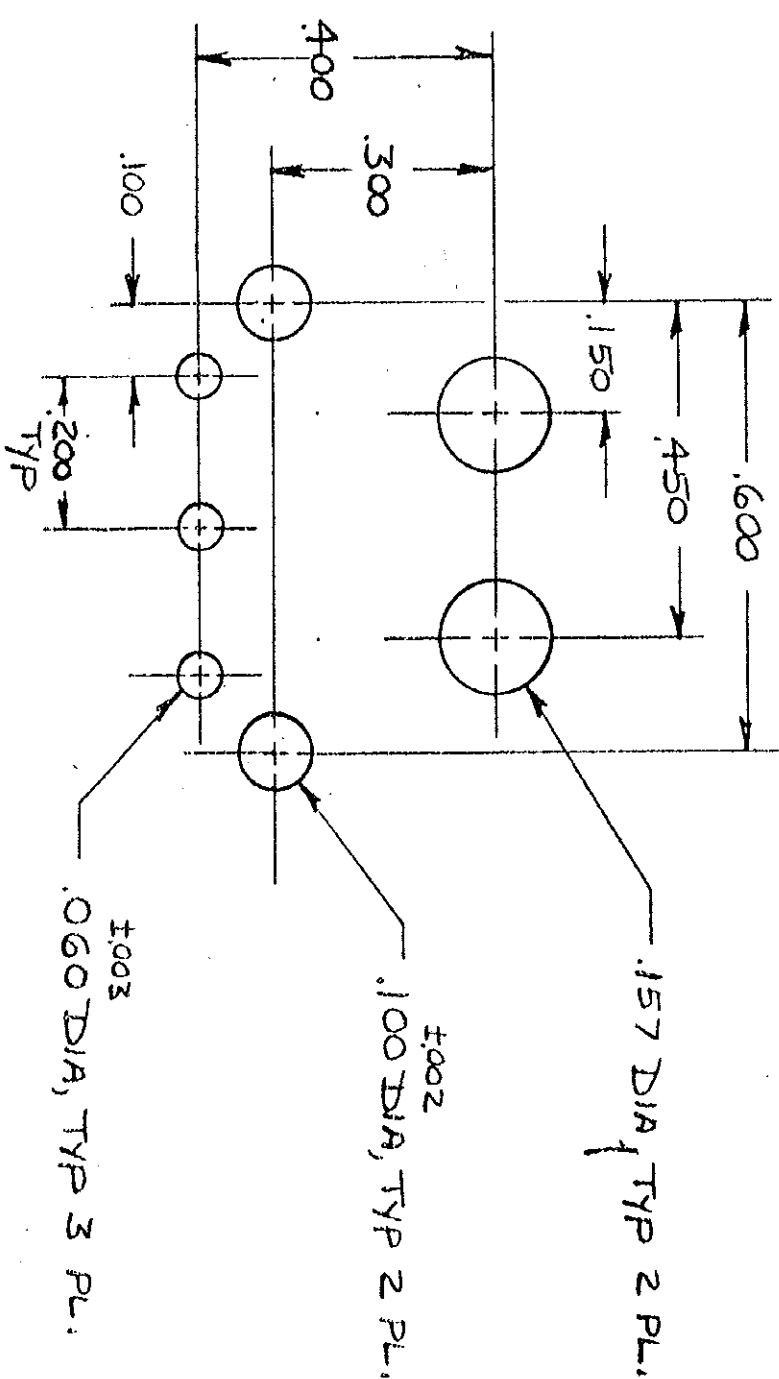
- Brand = AMP



MOUNTING PROCEDURE

1. PARTS COMPLY WITH AMP SOLDERABILITY SPEC. 109-11-3.
2. RECOMMEND EXPOSURE TO SOLDER WAVE (490°F) NOT TO EXCEED 5 SECONDS.

REV.	DATE	APPROVED	DESCRIPTION
1	7/18/83	BD/RS	RELEASED NEW DRAWING, TT 83-44
2	7/18/83	TJ/9m	CHANGED PICTORIALITY, M-7389
3	7/18/83	BD/RS	RESTORED



RECOMMENDED LAYOUT FOR .062 THICK P.C. BOARD
TOL: ±.005

NO.	DESCRIPTION	MATERIAL & FINISH	ITEM NO.	PART NO.
3	CONTACT	PH BRZ, PRE-TIN	2	643488-1
1	HOUSING	NYLON, 94V-0, NATURAL	1	

UNLESS OTHERWISE SPECIFIED DIMENSIONS ARE IN INCHES. TOLERANCES ON: DECIMALS ±.015 ANGLES		CONTRACT NO. 4-11-83		NAME: AMP INCORPORATED, Harrisburg, Pa. 17105	
MATERIAL: SEE TABLE		DR: D.A. SALTZER	CHK: H. E. TRAVIS	PC HEADER ASSEMBLY, RIGHT ANGLE MOUNT, 3 CIRCUIT, COMMERCIAL MATE-N-LOK	
FINISH: SEE TABLE		APPD: H. E. TRAVIS	DATE: 4/18/83	SIZE: C	FSCM NO: 00779
		DSGN APPD:	OTHER APPD:	DRAWING NO: 643488	SCALE: 4:1