



My Cart | My Part Lists | [Sign In/Register](#)

[English \(Change\)](#)

**Have a Question?**  
Chat with a Product Information Specialist

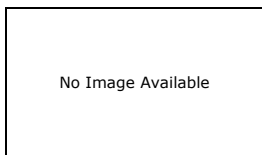
What can we help you find?

[Products](#) [Industries](#) [Resources](#) [About TE](#) [My Account](#) [Innovation](#) [Support Center](#)

## 650473-5 Product Details

Share Print Email

**Detailed product features are not currently available online.**  
Product features can often be found by referring to the available documents. [Contact us](#) for information about this product.



### 096 EURO TYPE C PIN ST ASSY

Always EU RoHS/ELV Compliant (Statement of Compliance)

#### Quick Links

- [Pricing & Availability](#)
- [Search for Tooling](#)
- [Contact Us About This Product](#)

### 650473-5

TE Internal Number: 650473-5

Active

[View 3D PDF](#)

[Add to My Part List](#)

[Buy Product](#)

Documentation & Additional Information	
<p><b>Product Drawings:</b></p> <ul style="list-style-type: none"> <li>• <a href="#">ASSEMBLY, PIN EUROCARD, TYPE C, .104 SOLDER POST (PDF, English)</a></li> </ul> <p><b>Catalog Pages/Data Sheets:</b></p> <ul style="list-style-type: none"> <li>• None Available</li> </ul> <p><b>Product Specifications:</b></p> <ul style="list-style-type: none"> <li>• None Available</li> </ul> <p><b>Application Specifications:</b></p> <ul style="list-style-type: none"> <li>• <a href="#">Eurocard Connectors Types B,C,M,Q,R, &amp; Enhanced Typ... (PDF, English)</a></li> </ul> <p><b>Instruction Sheets:</b></p> <ul style="list-style-type: none"> <li>• <a href="#">Soldering and Cleaning Eurocard Connectors (PDF, English)</a></li> </ul> <p><b>CAD Files:</b> (<a href="#">CAD Format &amp; Compression Information</a>)</p> <ul style="list-style-type: none"> <li>• <a href="#">2D Drawing (DXF, Version W)</a></li> <li>• <a href="#">3D Model (IGES, Version W)</a></li> <li>• <a href="#">3D Model (STEP, Version W)</a></li> </ul> <p style="text-align: right;"><a href="#">List all Documents</a></p>	<p><b>Related Products:</b></p> <ul style="list-style-type: none"> <li>• <a href="#">Tooling</a></li> </ul>

### Corporate Information

- [About TE](#)
- [Investors](#)
- [News Room](#)
- [Supplier Portal](#)
- [Careers](#)
- [Terms & Conditions](#)
- [Privacy Policy](#)
- [AODA Accessibility Policy](#)
- [AODA Multi-Year Accessibility Plan](#)

### Quick Links

- [Distributor Inventory](#)
- [Product Cross Reference](#)
- [Documents & Drawings](#)
- [Product Compliance Support Center](#)
- [Site Map](#)

### Customer Support

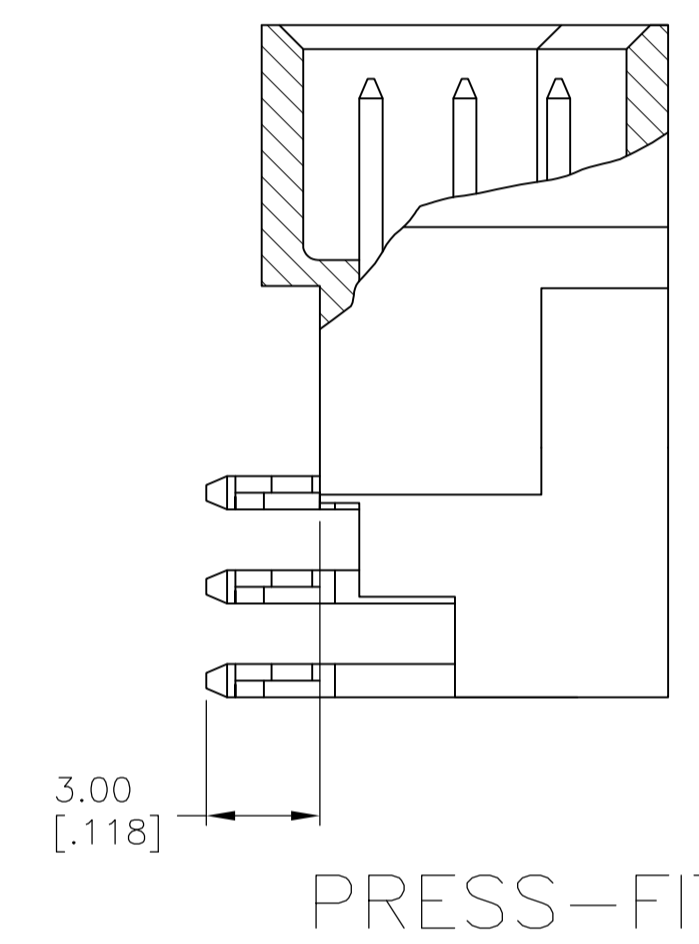
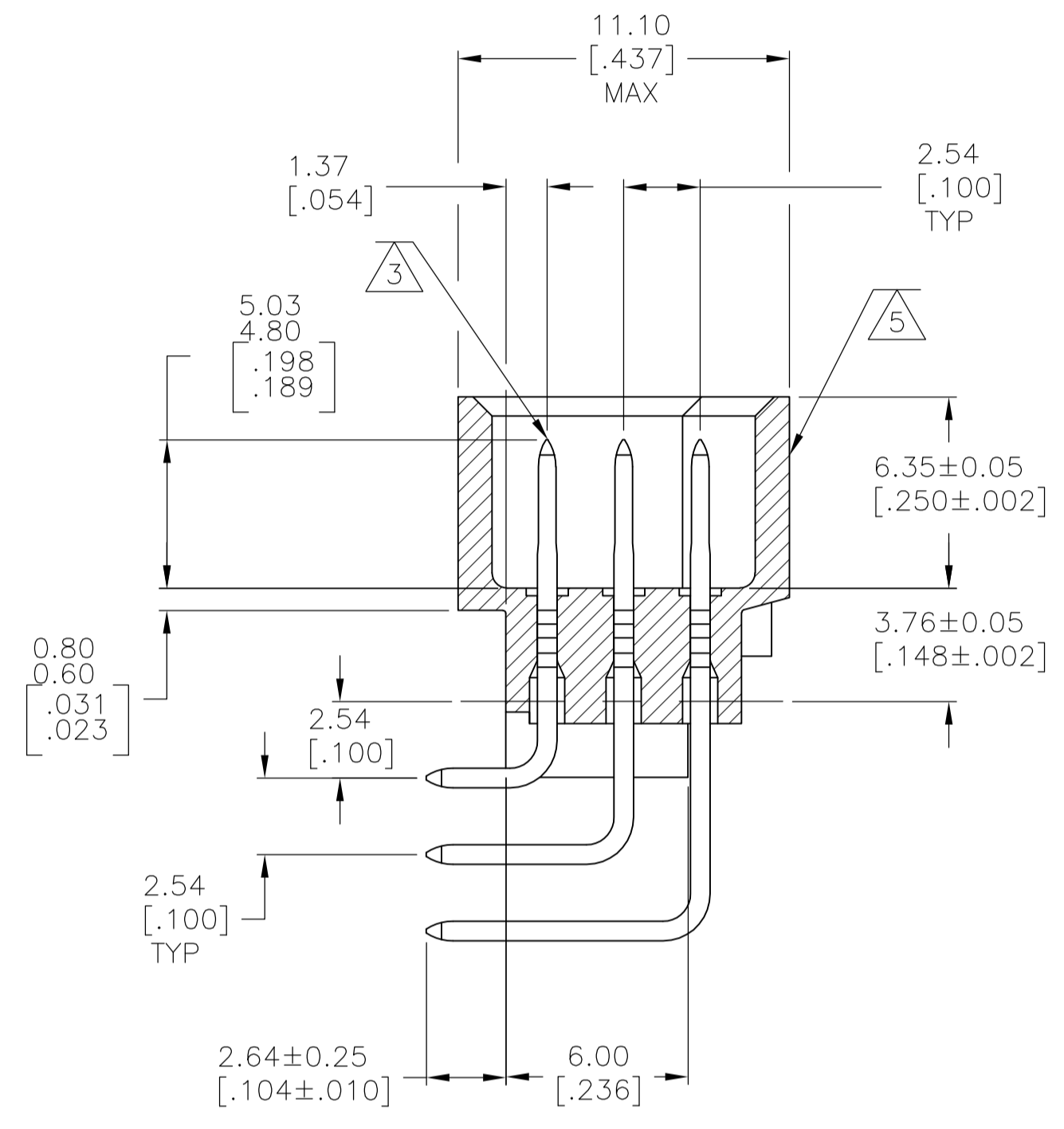
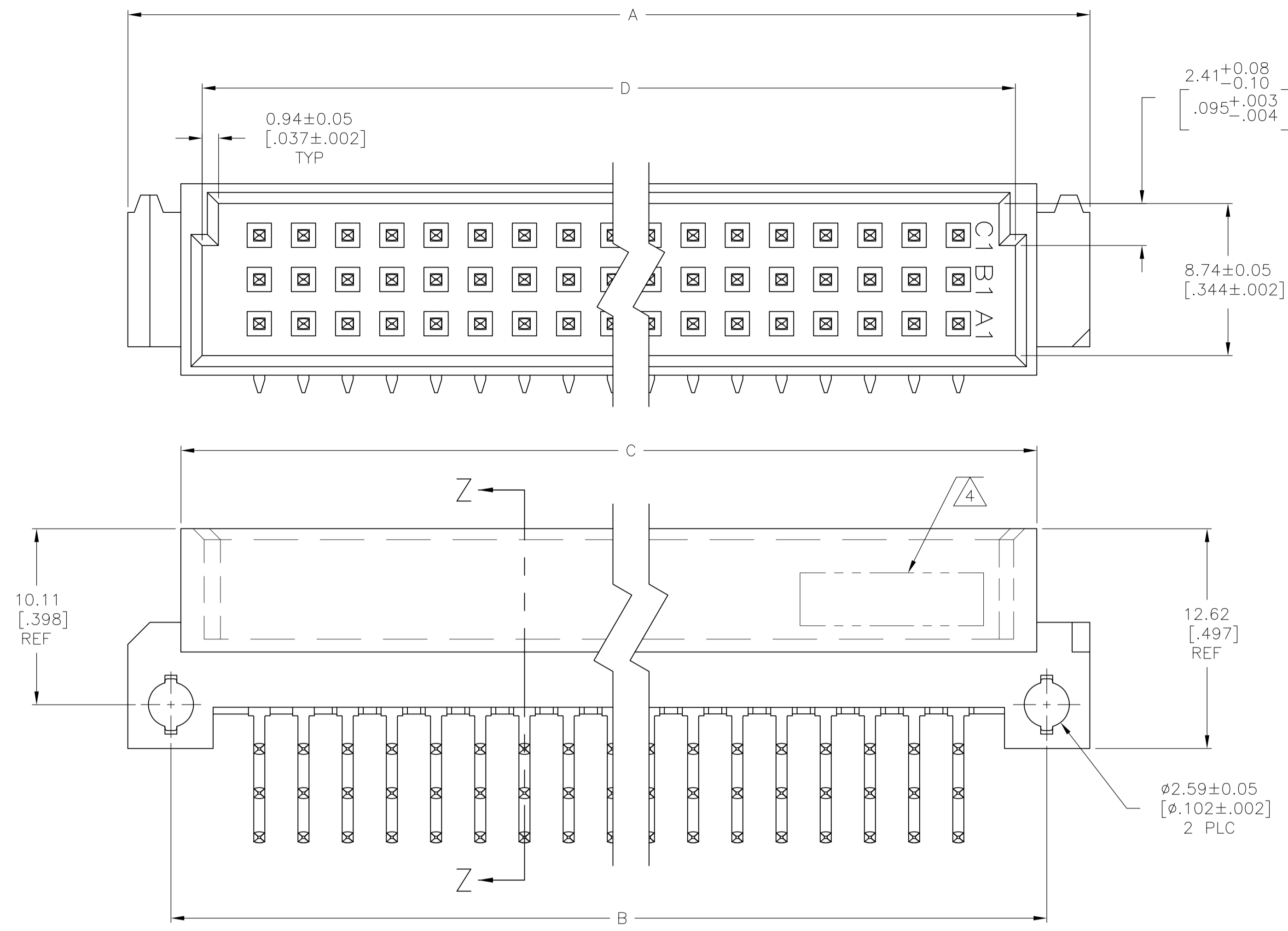
- [Email or Chat With Us](#)
- [Find a Phone Number](#)
- [Knowledge Base](#)
- [Manage Your Account](#)

### Keep Me Informed

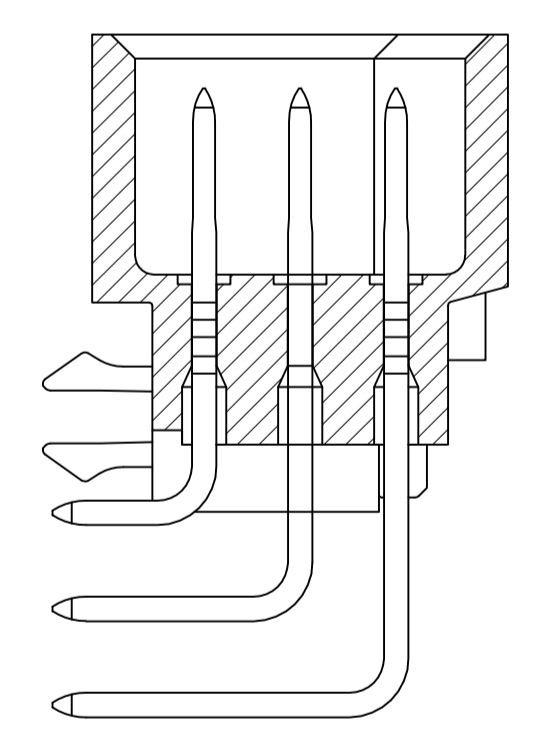


LOC AD 00		REVISIONS		
REV	DATE	DESCRIPTION	DATE	APPV
R	09AUG13	REVISED PER ECO-13-012803	09AUG13	KH RP

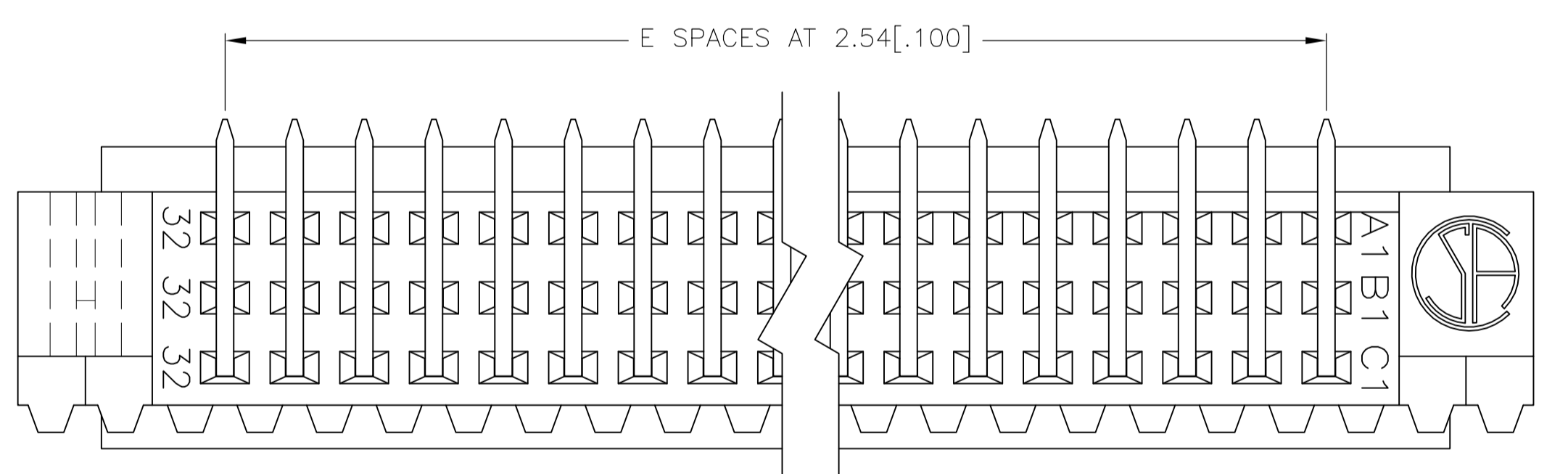
- 1 HOUSING MATERIAL: GLASS-FILLED POLYMER.
- 2 POST MATERIAL: COPPER ALLOY.
- 3 NICKEL UNDERPLATE 1.27UM [.000050] ON ALL CONTACTS.
- 4 PART NUMBER, DATE CODE MARKED THIS APPROXIMATE AREA.
- 5 MARKING ON THIS SIDE.
- 6 RECOMMENDED HOLE SIZE FOR MANUAL APPLICATION OF SOLDER CONNECTORS INTO PC BOARD. REFERENCE APPLICATION SPEC 114-9014 FOR RECOMMENDED PLATED THROUGH HOLE SIZE FOR PRESS-FIT APPLICATIONS



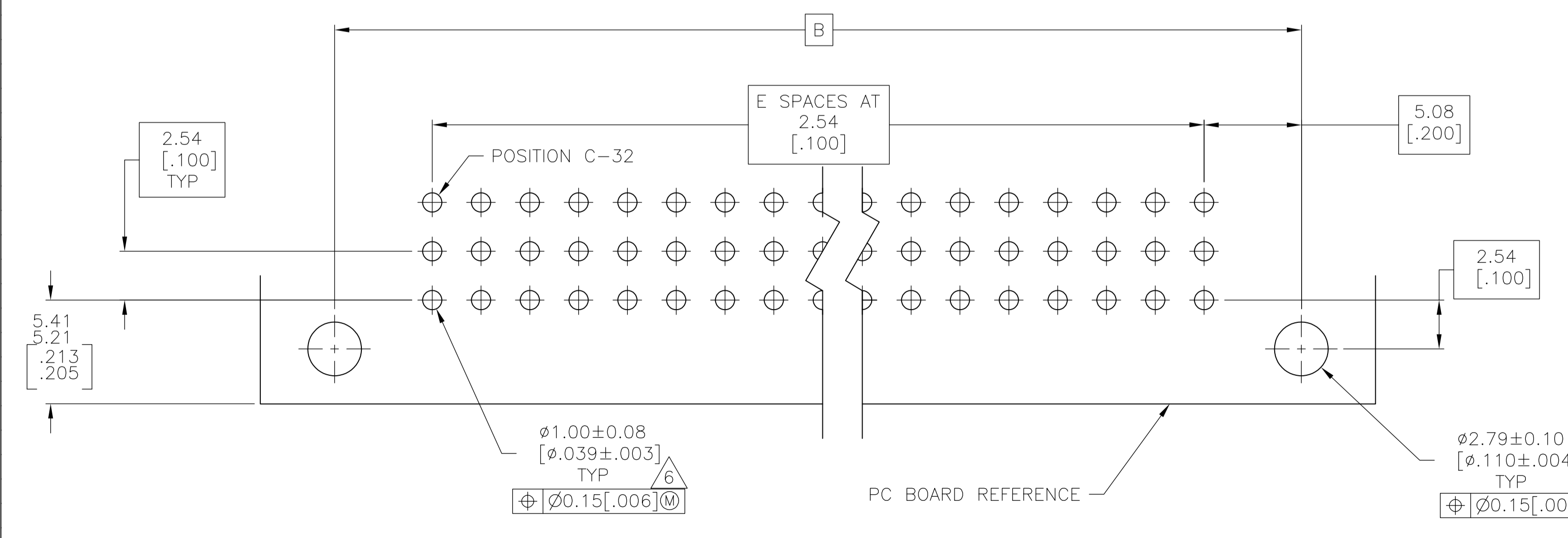
PRESS-FIT



BOARD LOCK



SECTION Z-Z



PC BOARD LAYOUT

ROW	NO. OF LOADED POSITIONS	HOUSING SIZE	ROHS COMPLIANT	ROHS COMPLIANT	NON ROHS COMPLIANT	ROHS COMPLIANT	ROHS COMPLIANT	ROHS COMPLIANT	ROHS COMPLIANT	ROHS COMPLIANT	ROHS COMPLIANT	ROHS COMPLIANT	ROHS COMPLIANT	ROHS COMPLIANT	ROHS COMPLIANT	ROHS COMPLIANT		
49	131.01	133.48	134.62	139.7	A-B-C	150	150								650907-5	5650915-5	5650907-5	
39	105.61	108.08	109.22	114.3	A-B-C	120	120								650906-5	5650914-5	5650906-5	
31	85.29	87.76	88.9	94.0	A-C	64	96	216432-4	216432-1						650945-3	536356-5	650945-5	
31	85.29	87.76	88.9	94.0	A-B-C	96	215605-4	215605-1		650473-8	650945-3	650913-5	650473-5	650945-5	5536356-5	5650945-5	5650945-5	
15	44.65	47.12	48.26	53.34	A-C	32					650946-3	650978-5	650946-5	650946-5	650946-5	650978-5	5650946-5	
15	44.65	47.12	48.26	53.34	A-B-C	48					650478-3	148020-5	650478-5	650478-5	5148020-5	5650478-5	5650478-5	
											Press-fit	Press-fit	Wave Solder	Wave Solder	Wave Solder	Wave Solder	Reflow 260°C	Reflow 260°C
											ROHS Compliant	ROHS Compliant	Non ROHS Compliant	ROHS Compliant	ROHS Compliant	ROHS Compliant	ROHS Compliant	ROHS Compliant
											DIN 41612 Level II	1.25um GOLD	DIN 41612 Level II	Gold Flash	DIN 41612 Level II	DIN 41612 Level II	DIN 41612 Level II	DIN 41612 Level II
											No Boardlock	No Boardlock	No Boardlock	No Boardlock	With Boardlock	No Boardlock	With Boardlock	NO Boardlock

THIS DRAWING IS A CONTROLLED DOCUMENT.

DIMENSIONS: mm [INCHES]

TOLERANCES UNLESS OTHERWISE SPECIFIED:

0 PLC	±	-
1 PLC	±	-
2 PLC	±	0.13[.005]
3 PLC	±	0.13[.005]
4 PLC	±	-
ANGLES	±	-

MATERIAL: FINISH

APPROVED: D.C. RUBENDALL 2/13/91

DATE: 2/13/91

NAME: ASSEMBLY, PIN EUROCARD, TYPE C, .104 SOLDER POST

SIZE: A1 00779 C=650473

SCALE: 5:1 SHEET 1 OF 1 REV R