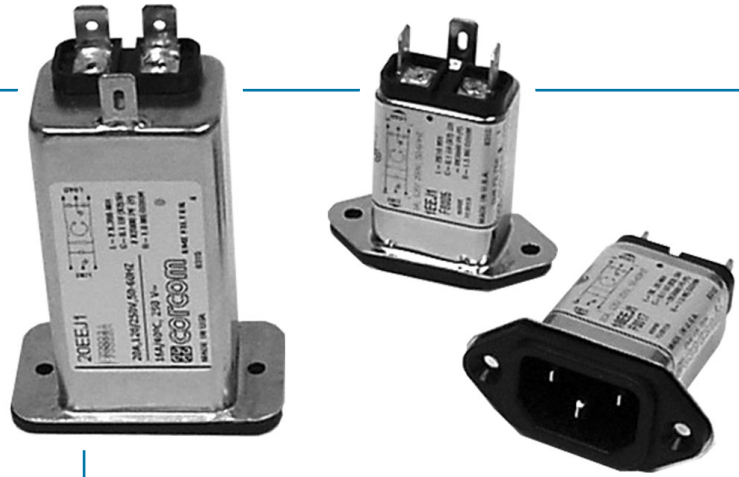


EEJ Series

Enhanced Performance
Compact RFI Filter
IEC Connector Package



UL Recognized
CSA Certified
VDE Approved

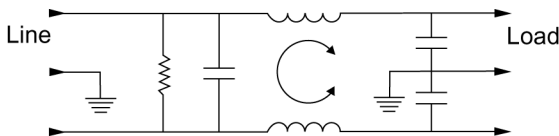


EEJ Series

The new EEJ series is the next generation of power inlet filters. The 1-15 amp versions are flange mounted and mechanically equivalent to the EEA/EEB series. The performance has been enhanced to meet the needs for more attenuation. The EEJ also has an extended metal flange around the socket for improved high frequency EMI shielding as well as a larger contact area for the panel ground.

The EEJ series also includes a 20 amp version that uses the inlet IEC 320/C20. This product was designed to keep up with the demand for higher current equipment. Applications include higher current power supplies and computing equipment, which consist of work stations, base stations, servers, etc.

Electrical Schematic



Resistor location for reference only.

Specifications

- Maximum leakage current, each line-to-ground
 - @ 120 VAC 60 Hz: .22 mA
 - @ 250 VAC 50 Hz: .38 mA
- Hipot rating (one minute):
 - line-to-ground 1500 VDC
 - line-to-line 1450 VDC
- Operating frequency: 50/60 Hz
- Rated voltage: 120/250 VAC
- Operating Temperature: -10°C to 40°C

Rated Current:

In an ambient (T_a) higher than 40°C maximum operating current, (I_o), is calculated as follows:

$$I_o = I_r \sqrt{\frac{100 - T_a}{60}}$$

Minimum insertion loss in dB:

Line-to-ground in 50 ohm circuit

Current Rating	Frequency-MHz								
	.01	.05	.1	.15	.5	1	5	10	30
1A	15	27	32	37	44	52	50	50	40
3A	-	10	15	20	30	39	48	50	60
6A	-	1	5	9	21	28	41	44	54
10A	-	1	4	7	14	18	31	36	51
15A	-	-	-	2	5	8	21	26	42
20A	-	-	3	5	14	21	30	33	42

Line-to-line in 50 ohm circuit

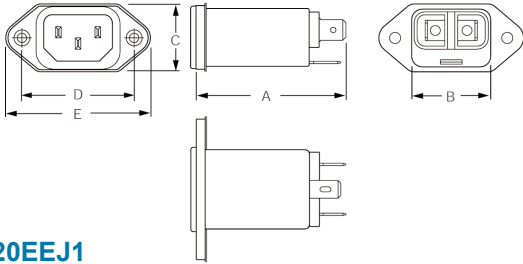
Current Rating	Frequency-MHz								
	.01	.05	.1	.15	.5	1	5	10	30
1A	-	-	5	8	19	27	45	43	40
3A	-	-	5	8	17	20	39	42	40
6A	-	-	5	8	17	21	32	40	40
10A	-	-	5	8	17	21	23	36	38
15A	-	-	5	8	17	23	33	30	38
20A	-	-	5	2	17	25	38	48	48

Series EEJ

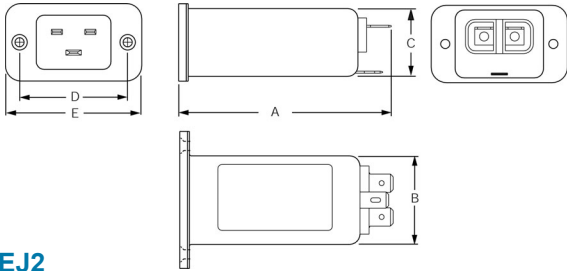
Case Styles

Metric shown in italics.

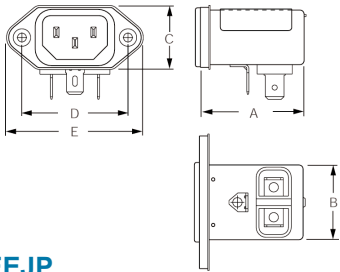
EEJ1 (1 - 15 Amp versions)



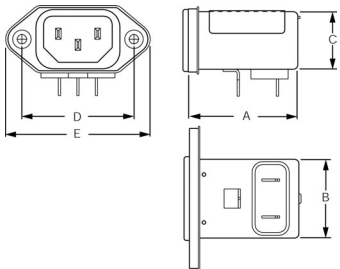
20EEJ1



EEJ2



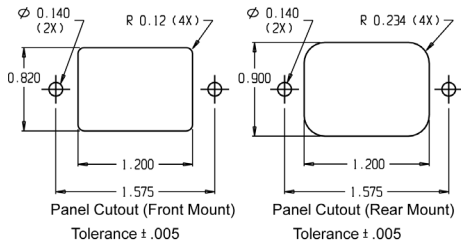
EEJP



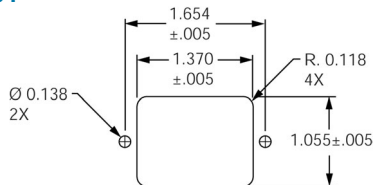
Recommended Panel Cutouts

1 to 15A EEJ - all terminal types

Front mount only applicable to type 1 terminals



20EEJ1



Case Dimensions

Metric shown in italics.

Part No.	A (max)	B (max)	C (max)	D $\pm .015$ $\pm .38$	E (max)
1EEJ1, 3EEJ1	2.15	1.20	0.96	1.58	2.04
6EEJ1, 10EEJ1 15EEJ1	54.61	30.48	24.38	40.00	51.76
20EEJ1	3.13 79.38	1.37 34.79	1.18 29.99	1.65 42.01	2.09 53.00
1EEJ2, 3EEJ2	1.54	1.13	0.96	1.58	2.04
6EEJ2, 10EEJ2	39.12	28.70	24.38	40.00	51.76
15EEJ2	1.79 45.47	1.13 28.70	0.96 24.38	1.58 40.00	2.04 51.76
1EEJP, 3EEJP	1.54	1.13	0.96	1.58	2.04
6EEJP, 10EEJP	39.12	28.70	24.38	40.00	51.76
15EEJP	1.79 45.47	1.13 28.70	0.96 24.38	1.58 40.00	2.04 51.76

Ordering Information

Consult your local Corcom sales representative for pricing.

20EEJ1

Current Rating
(1, 3, 6, 10, 15, 20A)

Terminal Type

- 1 - Straight 1/4" quick-connect
- 2 - Rt. Angle 1/4" quick-connect
- P - PCB mount

Series

EEJ - Extended Performance
General purpose filter

Available Part Numbers

1EEJ1	10EEJ1
1EEJ2	10EEJ2
1EEJP	10EEJP
3EEJ1	15EEJ1
3EEJ1	15EEJ2
3EEJP	15EEJP
6EEJ1	20EEJ1
6EEJ2	
6EEJP	