

# EEJ Series



UL Recognized  
CSA Certified  
VDE Approved\*



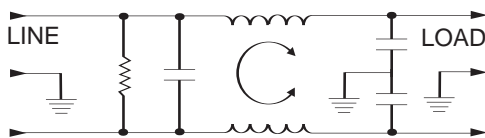
## EEJ Series

The new EEJ series is the next generation of power inlet filters. The 1-15 amp versions are flange mounted and mechanically equivalent to the EEA/EEB series. The performance has been enhanced to meet the needs for more attenuation. The EEJ series also has an extended metal flange around the socket for improved high frequency EMI shielding as well as a larger contact area for the panel ground.

The EEJ series also includes a 20 amp version that uses the inlet IEC 320/C20. This product was designed to keep up with the demand for higher current equipment. Applications include higher current power supplies and computing equipment, which consist of work stations, base stations, servers, etc.

\*15EEJ - VDE rated at 10 amps, 250 VAC  
20EEJ - VDE rated at 16 amps, 250 VAC

## Electrical Schematic



Resistor location for reference only.

## Specifications

**Maximum leakage current, each line-to-ground**  
 @ 120 VAC 60 Hz: .22 mA  
 @ 250 VAC 50 Hz: .38 mA

**Hipot rating (one minute):**  
 line-to-ground 1500 VAC  
 line-to-line 1450 VDC

**Operating frequency:** 50/60 Hz

**Rated voltage (max.):** 250 VAC

### Minimum insertion loss in dB:

Line-to-ground in 50 ohm circuit

Current Rating	Frequency-MHz								
	.01	.05	.1	.15	.5	1	5	10	30
1A	15	27	29	32	41	47	47	47	40
3A	-	10	15	20	30	39	48	50	60
6A	-	1	5	9	21	28	41	44	54
10A	-	1	4	7	14	18	31	36	51
15A	-	-	-	2	5	8	21	26	42
20A	-	-	13	5	14	21	30	33	42

Line-to-line in 50 ohm circuit

Current Rating	Frequency-MHz								
	.01	.05	.1	.15	.5	1	5	10	30
1A	-	-	5	8	19	27	45	43	40
3A	-	-	5	8	17	20	39	42	40
6A	-	-	5	8	17	21	32	40	40
10A	-	-	5	8	17	21	23	36	38
15A	-	-	5	8	17	23	33	30	38
20A	-	-	5	2	17	25	38	48	48

## Line Cord

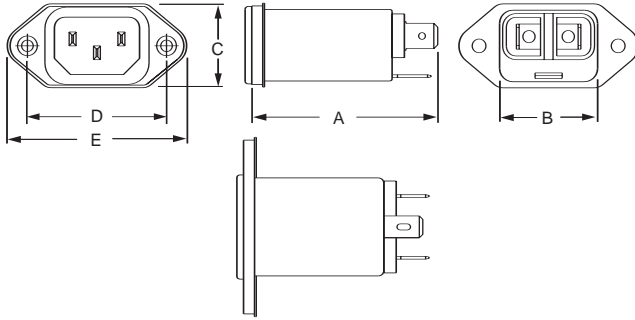
Line Cord No. GA400:

7 1/2 foot, 3-conductor line cord to mate with EEJ series.

# EEJ Series

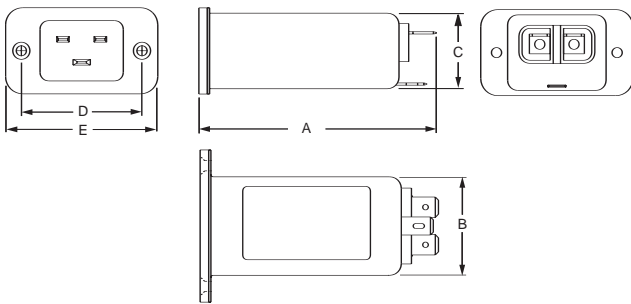
## Case Styles

### EEJ1



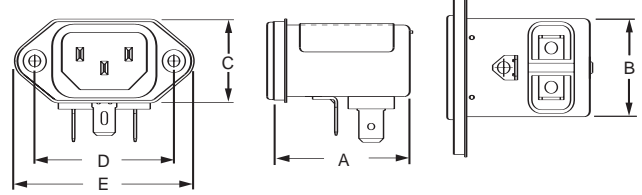
Typical Dimensions:  
 Terminals: .250 [6.35] (3)  
 Holes: .07 [1.8] Dia. (2)  
 Slot: .07x.16 [1.8x4.1]

### 20EEJ1



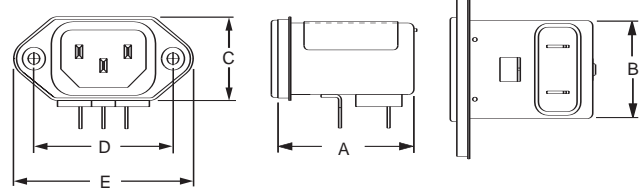
Typical Dimensions:  
 Terminals: .250 [6.35] (3)  
 Holes: .07 [1.8] Dia. (2)  
 Slot: .07x.16 [1.8x4.1]

### EEJ2



Typical Dimensions:  
 Terminals: .250 [6.35] (3)  
 Holes: .07 [1.8] Dia. (2)  
 Slot: .07x.16 [1.8x4.1]

### EEJ2P

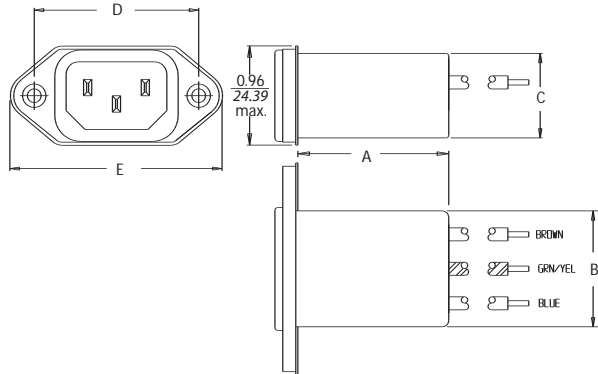


Typical Dimensions:  
 Mounting Holes: .132 [3.35] Dia. (2) with 260 Dia. x 90° countersunk for # 4 flathead screw

# EEJ Series

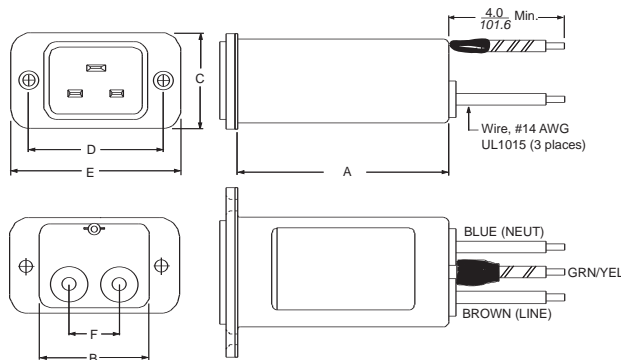
## Case Styles (continued)

### EEJ8



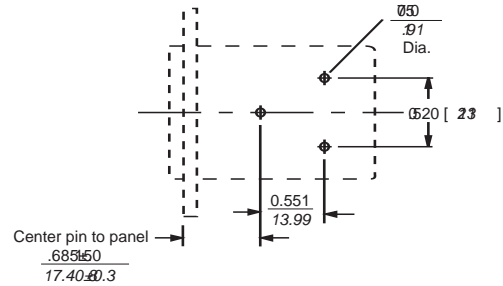
Typical Dimensions:  
Wire Leads: 4.0 [101.6] Min.  
1-15A, 18 AWG  
20A, 14 AWG / UL1015

### 20EEJ8



Typical Dimensions:  
Wire Leads: 4.0 [101.6] Min.  
1-15A, 18 AWG / UL1015  
20A, 14 AWG / UL1015

## 1 to 15A EEJP PCB Layout



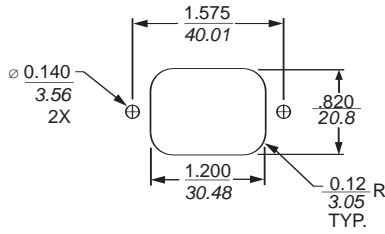
## Case Dimensions

Part No.	A (max)	B (max)	C (max)	D $\pm .015$ $\pm .388$	E (max) (ref)	F
1EEJ1, 3EEJ1, 6EEJ1, 10EEJ1, 15EEJ1	<b>2.15</b> 54.61	<b>1.13</b> 28.70	<b>0.96</b> 24.38	<b>1.580</b> 40.00	<b>2.04</b> 51.76	—
20EEJ1	<b>3.13</b> 79.38	<b>1.37</b> 34.79	<b>1.18</b> 29.99	<b>1.650</b> 42.01	<b>2.09</b> 53.00	—
1EEJ2, 3EEJ2, 6EEJ2, 10EEJ2, 15EEJ2	<b>1.54</b> 39.12	<b>1.13</b> 28.70	<b>0.96</b> 24.38	<b>1.580</b> 40.00	<b>2.04</b> 51.76	—
1EEJP, 3EEJP, 6EEJP, 10EEJP, 15EEJP	<b>1.54</b> 39.12	<b>1.13</b> 28.70	<b>0.96</b> 24.38	<b>1.580</b> 40.00	<b>2.04</b> 51.76	—
1EEJ8, 3EEJ8, 6EEJ8, 10EEJ8, 15EEJ8	<b>1.54</b> 39.12	<b>1.13</b> 28.70	<b>0.81</b> 20.7	<b>1.580</b> 40.00	<b>2.04</b> 51.76	—
20EEJ8	<b>2.65</b> 67.31	<b>1.35</b> 34.29	<b>1.18</b> 29.99	<b>1.650</b> 42.01	<b>2.09</b> 53.00	<b>.62</b> 15.75

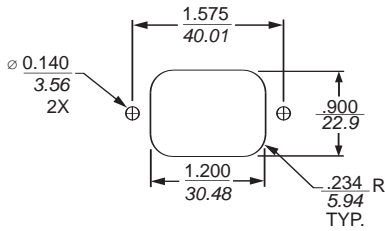
# EEJ Series

## Recommended Panel Cutouts

### 1 to 15A EEJ

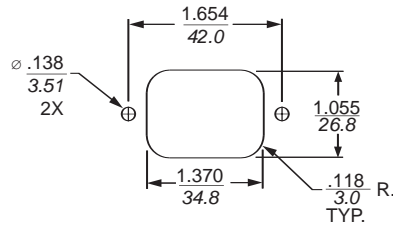


Front Mount

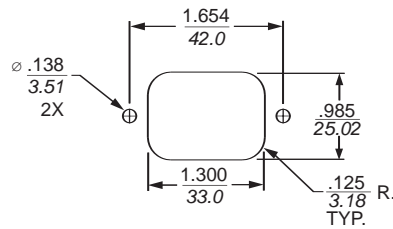


Back Mount

### 20EEJ



Front Mount



Back Mount

Notes:

- 1 Tolerance ± .005 [0.13]
- 2 Panel Thickness .031-.047 [.78-1.19]
- 3 EEJ1 and EEJ8 styles allow for front or back mounting
- 4 EEJ2 and EEJP allow for back mounting only

## Part Numbers

1EEJ1	10EEJ1
1EEJ2	10EEJ2
1EEJP	10EEJP
1EEJ8	10EEJ8
3EEJ1	15EEJ1
3EEJ2	15EEJ2
3EEJP	15EEJP
3EEJ8	15EEJ8
6EEJ1	20EEJ1*
6EEJ2	20EEJ8*
6EEJP	
6EEJ8	
<b>Insulating Boot (1-15 Amp)</b>	
	FA601

\*UL, CSA — 20 Amp; VDE — 16 Amp