

EJS Series

Enhanced Performance
Snap-In
Compact RFI Filter
IEC Connector Package



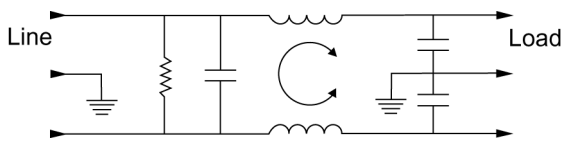
UL Recognized
CSA Certified
VDE Approved

EJS Series

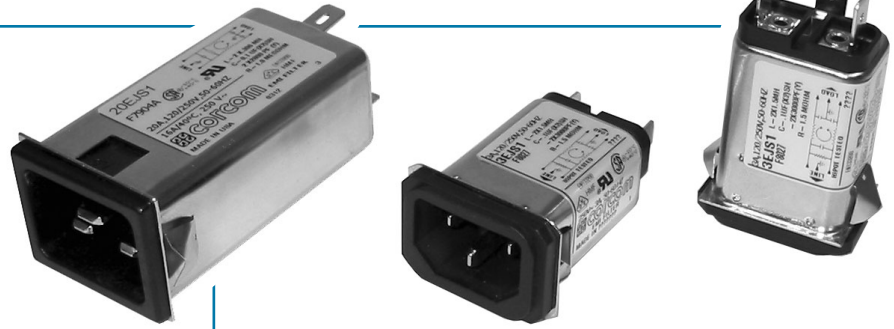
The new EJS series is the next generation of power inlet filters. The 1-15 amp versions are snap-in mounted and mechanically equivalent to the EAS/EBS series. The performance has been enhanced to meet the needs for more attenuation. The EJS also has an extended metal flange around the socket for improved high frequency EMI shielding as well as a larger contact area for the panel ground.

The EJS series also includes a 20 amp version that uses the inlet IEC 320/C20. This product was designed to keep up with the demand for higher current equipment. Applications include higher current power supplies and computing equipment, which consist of work stations, base stations, servers, etc.

Electrical Schematic



Resistor location for reference only.



Specifications

Maximum leakage current, each line-to-ground

@ 120 VAC 60 Hz:	.22 mA
@ 250 VAC 50 Hz:	.38 mA

Hipot rating (one minute):

line-to-ground	1500 VDC
line-to-line	1450 VDC

Operating frequency:

50/60 Hz

Rated voltage:

120/250 VAC

Operating Temperature:

-10°C to 40°C

Rated Current:

In an ambient (T_a) higher than 40°C maximum operating current, (I_o), is calculated as follows:

$$I_o = I_r \sqrt{\frac{100 - T_a}{60}}$$

Minimum insertion loss in dB:

Line-to-ground in 50 ohm circuit

Current Rating	Frequency-MHz								
	.01	.05	.1	.15	.5	1	5	10	30
1A	15	27	32	37	44	52	50	50	50
3A	-	10	15	20	30	39	48	50	60
6A	-	1	5	9	21	28	41	44	54
10A	-	1	4	7	14	18	31	36	51
15A	-	-	-	2	5	8	21	26	40
20A	-	-	3	5	14	21	30	33	42

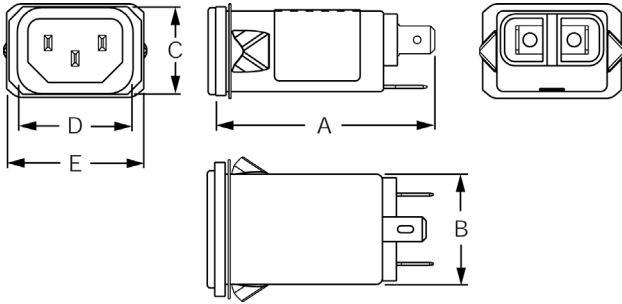
Line-to-line in 50 ohm circuit

Current Rating	Frequency-MHz								
	.01	.05	.1	.15	.5	1	5	10	30
1A	-	-	5	8	19	27	45	43	9
3A	-	-	5	8	17	20	39	42	11
6A	-	-	5	8	17	21	32	40	16
10A	-	-	5	8	17	21	23	36	16
15A	-	-	5	8	17	23	33	30	11
20A	-	-	5	2	17	25	27	35	48

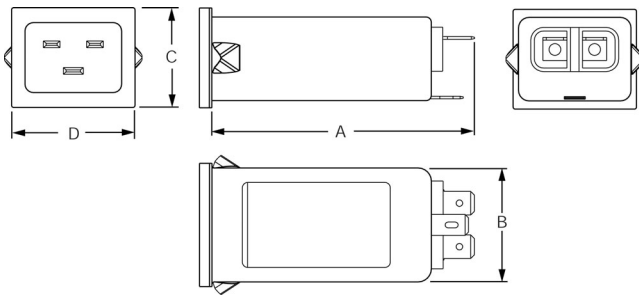
Case Styles

Metric shown in italics.

EJS1

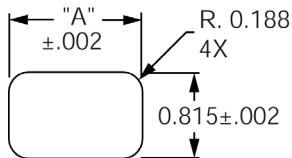


20EJS1



Recommended Panel Cutouts

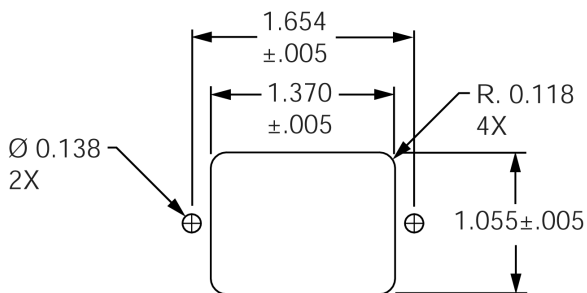
1 to 15 EJS1



Panel Cutout (Front Mount)

Panel Thickness	Panel Cutout "A"
0.031-0.052	1.260
0.046-0.068	1.350

20EJS1



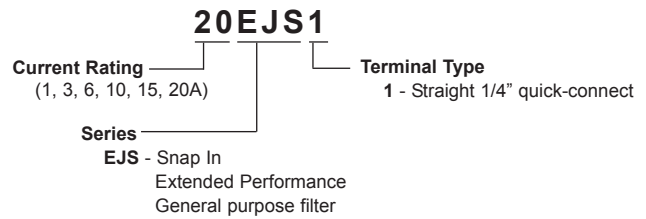
Case Dimensions

Metric shown in italics.

Part No.	A (max)	B (max)	C (max)	D $\pm .015$ $\pm .38$	E (max)
1EJS1, 3EJS1	2.20	1.10	0.96	1.19	1.35
6EJS1, 10EJS1	55.88	27.94	24.38	30.10	34.21
15EJS1					
20EJS1	3.13 79.375	1.35 34.29	1.18 29.99	1.35 34.29	1.45 36.83

Ordering Information

Consult your local Corcom sales representative for pricing.



Available Part Numbers

1EJS1
3EJS1
6EJS1
10EJS1
15EJS1
20EJS1