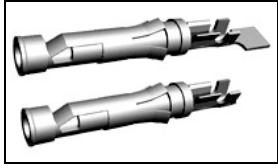


## 66101-2 Product Details



**66101-2**

TE Internal Number: 66101-2



### Multimate

Not EU RoHS or ELV Compliant (Find RoHS Compliant Alternates)

#### Product Highlights:

- Contact Type = Socket
- Contact Classification = Signal
- Type III+ Series
- Bright Tin-Lead Contact Plating, Mating Area, Material
- Wire Range = 0.80-1.40<sup>2</sup> [18-16] mm [AWG]

### Documentation & Additional Information

#### Product Drawings:

- [SOCKET ASSEMBLY, LOOSE PIECE, TYPE III+](#) (PDF, English)

#### Catalog Pages/Data Sheets:

- [1654742\\_HOUSEHOLD\\_APPLIANCES\\_RAST5](#) (PDF, English)

#### Product Specifications:

- [Type III+ Stamped and Formed Contacts](#) (PDF, English)

#### Application Specifications:

- [Type III+ \(Size 16\) Contacts](#) (PDF, English)

#### Instruction Sheets:

- [Selection of Multimate Pin and Socket Contacts](#) (PDF, English)

#### CAD Files: (CAD Format & Compression Information)

- [2D Drawing](#) (DXF, Version Z)
- [3D Model](#) (IGES, Version Z)
- [3D Model](#) (STEP, Version Z)

#### Additional Information:

- [Product Line Information](#)

#### Related Products:

- [Tooling](#)

### Product Features (Please use the Product Drawing for all design activity)

#### Product Type Features:

- Series = Type III+
- [Insulation Support](#) = Yes
- [Termination Method to Wire/Cable](#) = Crimp
- Wire/Cable Type = Discrete Wire
- Grade = Commercial

#### Electrical Characteristics:

- High Current = No

#### Termination Features:

- [Termination End Plating](#) = Bright Tin-Lead

#### Dimensions:

- Pin Diameter (mm [in]) = 1.57 [0.062]

#### Body Features:

- [Wire Range \(mm \[AWG\]\)](#) = 0.80-1.40<sup>2</sup> [18-16]
- Spring Material = Stainless Steel
- Used With = G Series Connectors, M Series Connectors, CPC Connectors

#### Contact Features:

- Contact Type = Socket
- Contact Classification = Signal
- [Contact Plating, Mating Area, Material](#) = Bright Tin-Lead
- [Contact Base Material](#) = Brass
- [Contact Size](#) = 16

#### Industry Standards:

- [RoHS/ELV Compliance](#) = Not ELV/RoHS compliant
- [Lead Free Solder Processes](#) = Not relevant for lead free process

#### Conditions for Usage:

- [Accepts Wire Insulation Diameter, Range \(mm \[in\]\)](#) = 2.03 – 2.54 [0.080 – 0.100]
- [Applies To](#) = Wire/Cable
- Test Current (A) = 13.0

#### Packaging Features:

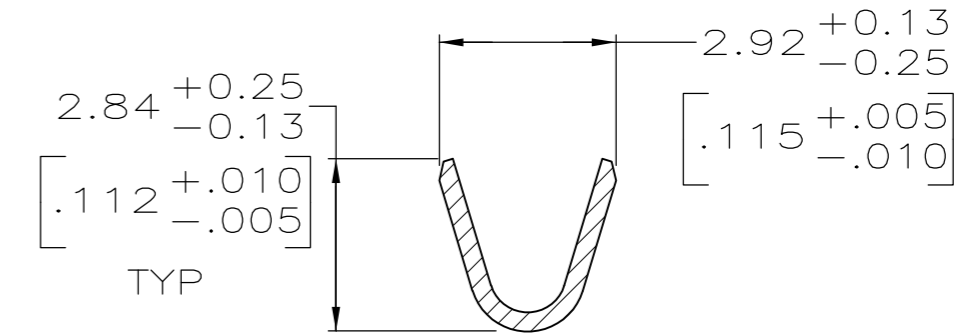
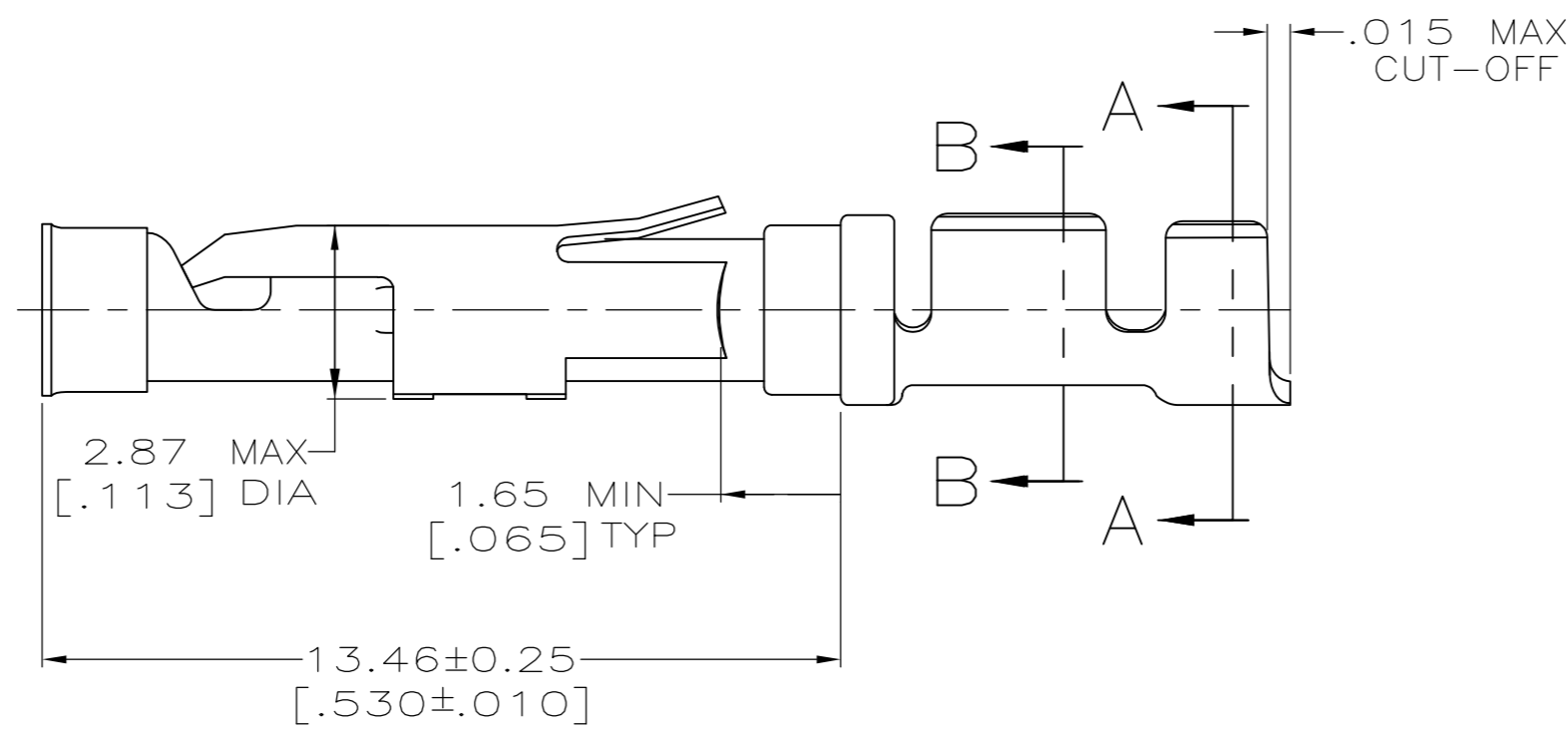
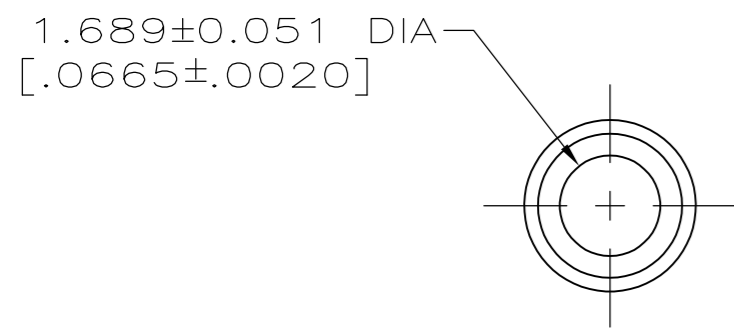
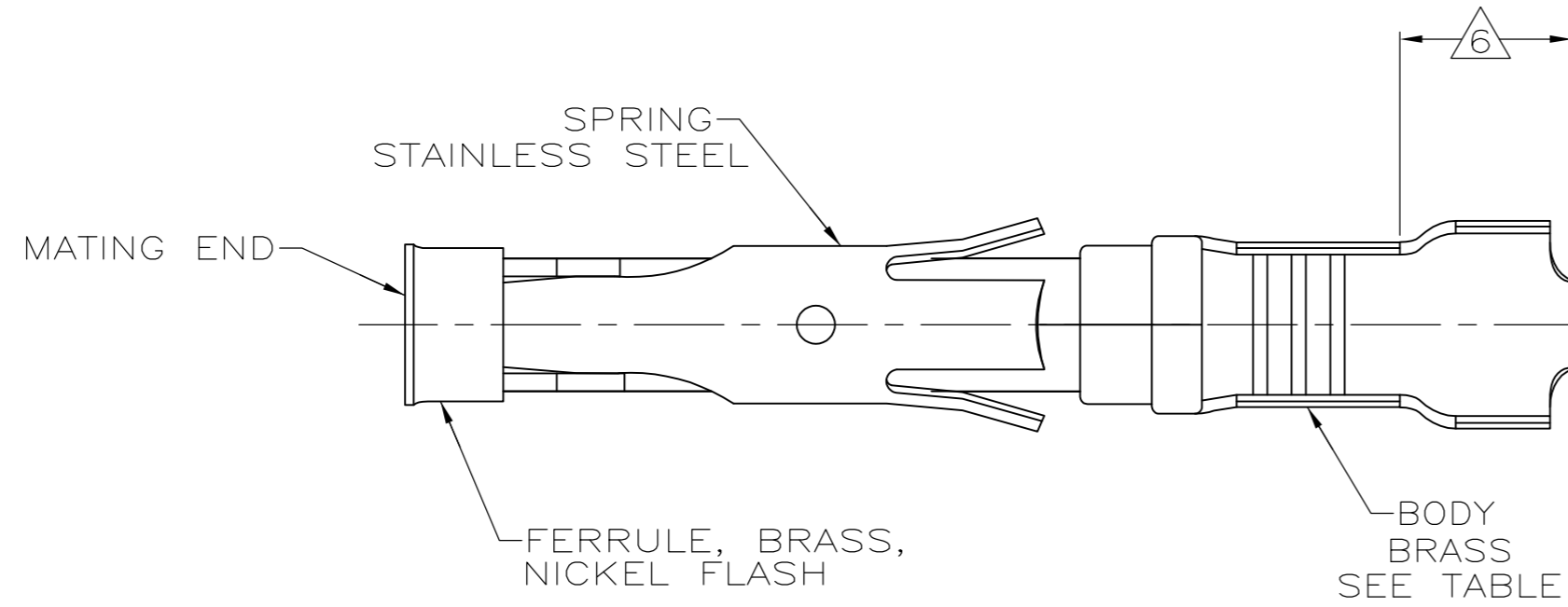
- [Packaging Method](#) = Loose Piece/Bulk
- Packaging Quantity = 1,000 Box/Carton

#### Other:

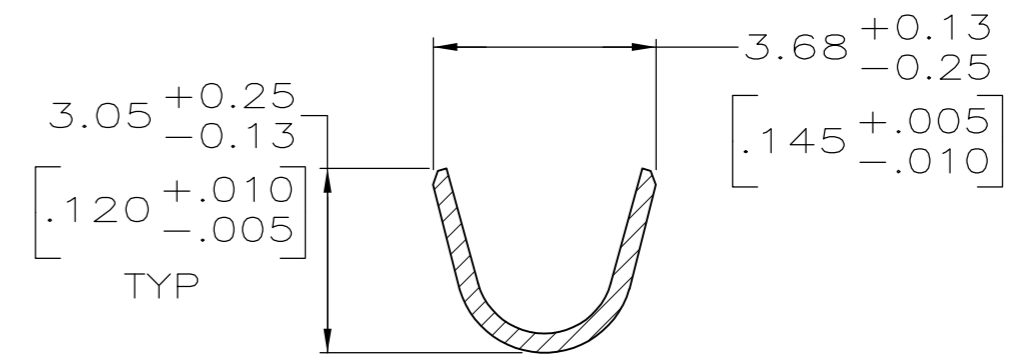
- Brand = AMP
- Comment = Insertion Tool No. 91002-1 (for Insulation Dia. 1.78 [.070] or less), No. 200893-2 (for Insulation Dia. .090 [2.29] max.) Extraction Tool No. 305183.; PRO-CRIMPER II # 58495-1 Hand Tool for field repair use only.; Overall insulation crimp diameter, including crimp barrel, must not exceed 3.18 [.125].

THIS DRAWING IS UNPUBLISHED. RELEASED FOR PUBLICATION  
 © COPYRIGHT - By - ALL RIGHTS RESERVED.

LOC	DIST	REVISIONS					
FT	47	P	LTR	DESCRIPTION	DATE	DWN	APVD
		E		REVISED PER ECO-12-012320	04JUL12	KH	MZ



SECTION B-B



SECTION A-A

- 1 0.76µm [.000030] MIN GOLD PER MIL-G-45204 ON MATING END FOR A LENGTH OF 5.08 [.200] MIN WITH 1.27µm [.000050] MIN MATTE TIN PLATE IN WIRE CRIMP AREA, BOTH OVER 0.76µm [.000030] MIN NICKEL PER QQ-N-290.
- 2 1.27µm [.000050] MIN TIN-LEAD PER MIL-T-10727 OVER 0.76µm [.000030] MIN NICKEL PER QQ-N-290.
- 3 0.76µm [.000030] MIN GOLD PER MIL-G-45204 ON MATING END FOR A LENGTH OF 5.08 [.200] MIN WITH A UNIFORM GRADIENT TO 0.25µm [.000010] MIN GOLD PER MIL-G-45204 ON THE REMAINDER OVER 0.76µm [.000030] MIN NICKEL PER QQ-N-290.
- 4 0.38µm [.000015] MIN GOLD PER MIL-G-45204 ON MATING END FOR A LENGTH OF 5.08 [.200] MIN WITH 1.27µm [.000050] MIN MATTE TIN PLATE IN WIRE CRIMP AREA, BOTH OVER 0.76µm [.000030] MIN NICKEL PER QQ-N-290.
- 5 0.38µm [.000015] MIN GOLD PER MIL-G-45204 ON MATING END FOR A LENGTH OF 5.08 [.200] MIN, 1.27µm [.000050] MIN TIN-LEAD PER MIL-T-10727 FOR A LENGTH OF 5.69 [.224] MIN ON OPPOSITE END, BOTH OVER 1.27µm [.000050] MIN NICKEL PER QQ-N-290 ON ENTIRE CONTACT.
- 6 GOLD PLATING NOT REQUIRED IN THIS AREA.
- 7 WIRE RANGE 18-16 AWG. INSULATION RANGE 2.03 [.080]-2.54 [.100].
- 8 1.27µm [.000050] MIN TIN PER MIL-T-10727 OVER 0.76µm [.000030] MIN NICKEL PER QQ-N-290.

	SMALL PACK	8	1-66100-9	2-66101-0
	STANDARD	8	1-66100-9	1-66101-9
	SMALL PACK	1	66100-4	1-66101-8
	SMALL PACK	4	66100-3	1-66101-7
	SMALL PACK	2	66100-2	1-66101-6
	SMALL PACK	3	66100-1	1-66101-5
OBSOLETE	STANDARD	5	1-66100-7	1-66101-4
	STANDARD	1	66100-4	66101-4
	STANDARD	4	66100-3	66101-3
	STANDARD	2	66100-2	66101-2
	STANDARD	3	66100-1	66101-1
	PACKAGING TYPE	BODY	STRIP P/N	PART NO

THIS DRAWING IS A CONTROLLED DOCUMENT.		DWN	05/29/92	TE Connectivity SOCKET ASSEMBLY, LOOSE PIECE, TYPE III+	
DIMENSIONS: mm [INCHES]		L.SIPE	6-11-92		
TOLERANCES UNLESS OTHERWISE SPECIFIED:		CHK	W.LENKER		
0 PLC ± -		APVD	G.STEINHAUER		
1 PLC ± -		PRODUCT SPEC		NAME	
2 PLC ± 0.13 [.005]		APPLICATION SPEC		SIZE	CAGE CODE
3 PLC ± -				DRAWING NO	RESTRICTED TO
4 PLC ± -				A2 00779	66101
ANGLES ± -				SCALE	SHEET
MATERIAL SEE CALLOUTS		FINISH SEE CALLOUTS	WEIGHT -	8:1	1 OF 1
			CUSTOMER DRAWING	REV	E