



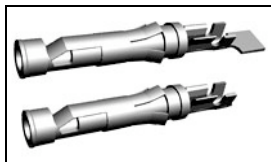
Have a Question?
 Chat with a Product
 Information Specialist

What can we help you find?

[Products](#) |
 [Industries](#) |
 [Resources](#) |
 [About TE](#) |
 [My Account](#) |
 [Innovation](#) |
 [Support Center](#)

66105-1 Product Details

[Share](#) |
 [Print](#) |
 [Email](#)



66105-1

TE Internal Number: 66105-1

Active

View 3D PDF

Multimate

Always EU RoHS/ELV Compliant (Statement of Compliance)

Product Highlights:

- Contact Type = Socket
- Contact Classification = Signal
- Type III+ Series
- Gold (30) Contact Plating, Mating Area, Material
- Wire Range = 0.20-0.60² [24-20] mm [AWG]

[View all Features](#)

Quick Links

- ▶ [Pricing & Availability](#)
- ▶ [Search for Tooling](#)
- ▶ [Product Feature Selector](#)
- ▶ [Contact Us About This Product](#)

[Add to My Part List](#) |
 [Request Sample](#) |
 [Find Similar Products](#) |
 [Buy Product](#)

Documentation & Additional Information	
<p>Product Drawings:</p> <ul style="list-style-type: none"> • SOCKET ASSEMBLY, LOOSE PIECE, TYPE III+ (PDF, English) <p>Catalog Pages/Data Sheets:</p> <ul style="list-style-type: none"> • Signal Contacts (PDF, English) • M_SERIES_PIN_AND_SOCKET_CONNECTORS (PDF, English) • AMP Circular Connectors for Commercial Signal & Powe... (PDF, English) <p>Product Specifications:</p> <ul style="list-style-type: none"> • Type III+ Stamped and Formed Contacts (PDF, English) <p>Application Specifications:</p> <ul style="list-style-type: none"> • Type III+ (Size 16) Contacts (PDF, English) <p>Instruction Sheets:</p> <ul style="list-style-type: none"> • Selection of Multimate Pin and Socket Contacts (PDF, English) <p>CAD Files: (CAD Format & Compression Information)</p> <ul style="list-style-type: none"> • 2D Drawing (DXF, Version AE) • 3D Model (IGES, Version AE) • 3D Model (STEP, Version AE) <p style="text-align: right;">List all Documents</p>	<p>Additional Information:</p> <ul style="list-style-type: none"> • Product Line Information <p>Related Products:</p> <ul style="list-style-type: none"> • Tooling

Product Features (Please use the Product Drawing for all design activity)	
<p>Product Type Features:</p> <ul style="list-style-type: none"> • Series = Type III+ • Insulation Support = Yes • Termination Method to Wire/Cable = Crimp • Wire/Cable Type = Discrete Wire • Grade = Commercial <p>Electrical Characteristics:</p> <ul style="list-style-type: none"> • High Current = No <p>Termination Features:</p> <ul style="list-style-type: none"> • Termination End Plating = Tin <p>Dimensions:</p> <ul style="list-style-type: none"> • Pin Diameter (mm [in]) = 1.57 [0.062] <p>Body Features:</p> <ul style="list-style-type: none"> • Wire Range (mm [AWG]) = 0.20-0.60² [24-20] • Spring Material = Stainless Steel • Used With = M Series Connectors, CPC Connectors, G Series Connectors <p>Contact Features:</p> <ul style="list-style-type: none"> • Contact Type = Socket • Contact Classification = Signal • Contact Plating, Mating Area, Material = Gold (30) 	<p>Industry Standards:</p> <ul style="list-style-type: none"> • RoHS/ELV Compliance = RoHS compliant, ELV compliant • Lead Free Solder Processes = Not relevant for lead free process • RoHS/ELV Compliance History = Always was RoHS compliant <p>Conditions for Usage:</p> <ul style="list-style-type: none"> • Accepts Wire Insulation Diameter, Range (mm [in]) = 1.02 - 2.03 [0.040 - 0.080] • Applies To = Wire/Cable • Test Current (A) = 13.0 <p>Packaging Features:</p> <ul style="list-style-type: none"> • Packaging Method = Loose Piece • Packaging Quantity = 1,000 Box/Carton <p>Other:</p> <ul style="list-style-type: none"> • Brand = AMP • Comment = PRO-CRIMPER II # 58495-1 Hand Tool for field repair use only.; Overall insulation crimp diameter, including crimp barrel, must not exceed 3.18 [.125].; Insertion Tool No. 91002-1 (for Insulation Dia. 1.78 [.070] or less), No. 200893-2 (for Insulation Dia. .090 [2.29] max.) Extraction Tool No. 305183.

- [Contact Base Material](#) = Brass
- [Contact Size](#) = 16

Corporate Information

- [About TE](#)
- [Investors](#)
- [News Room](#)
- [Supplier Portal](#)
- [Careers](#)
- [Terms & Conditions](#)
- [Privacy Policy](#)

Quick Links

- [Distributor Inventory](#)
- [Product Cross Reference](#)
- [Documents & Drawings](#)
- [Product Compliance Support Center](#)
- [Site Map](#)

Customer Support

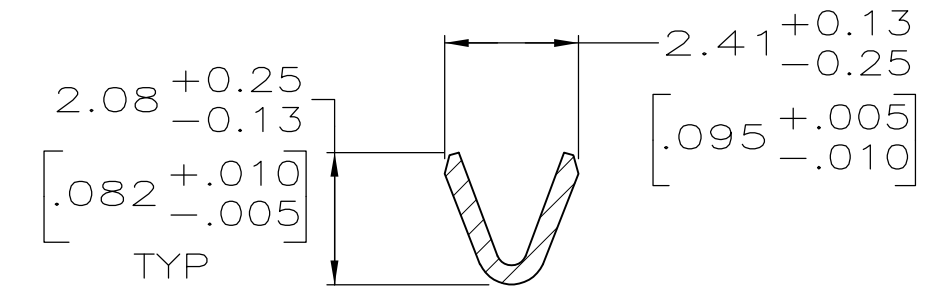
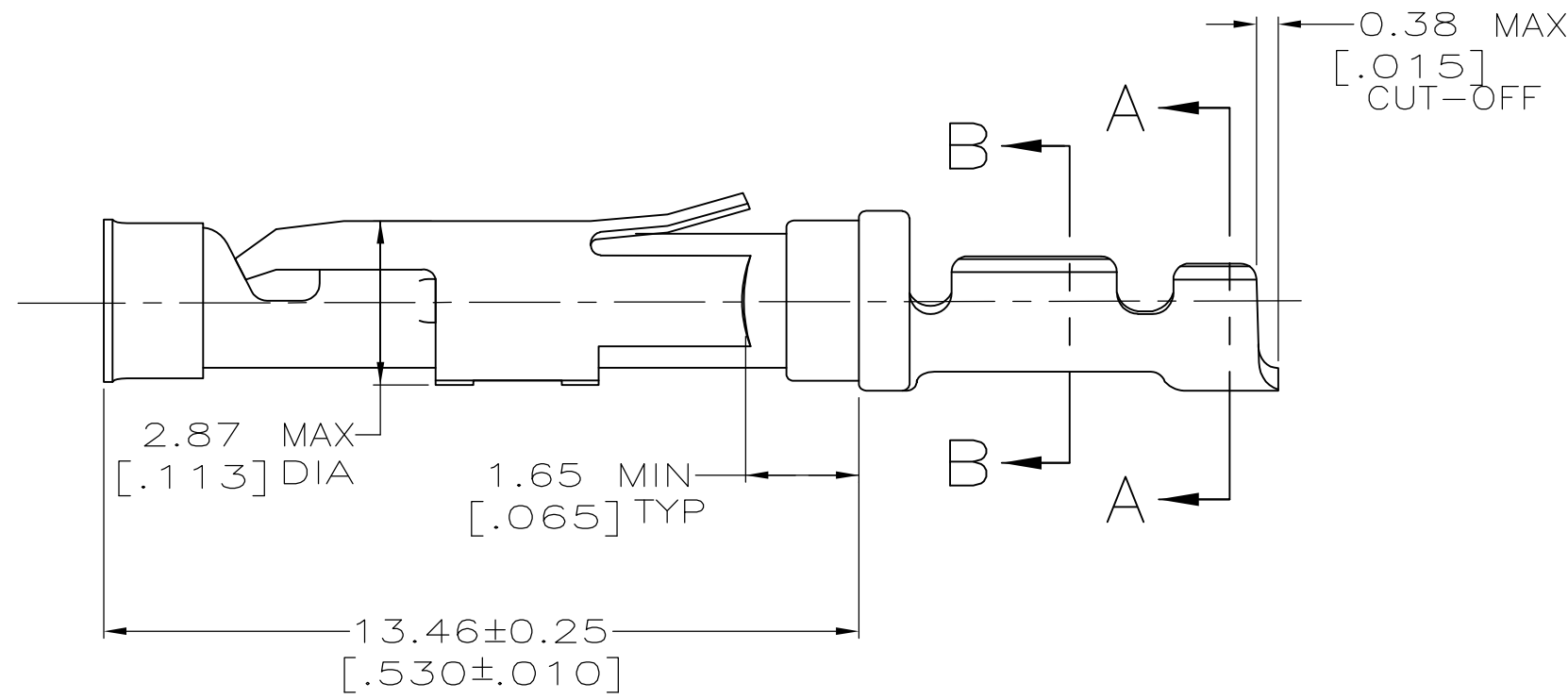
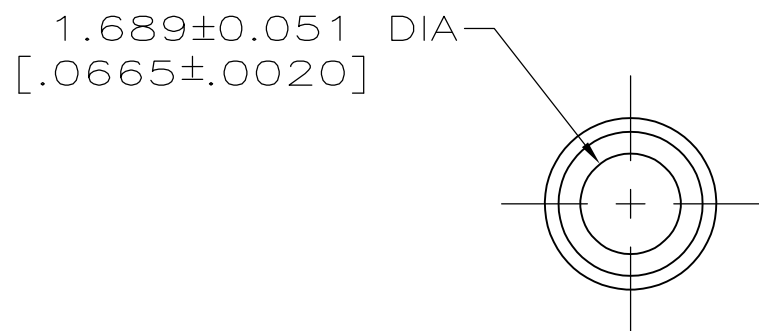
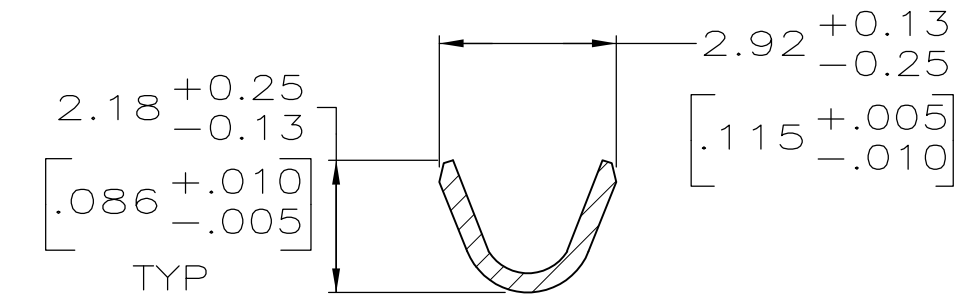
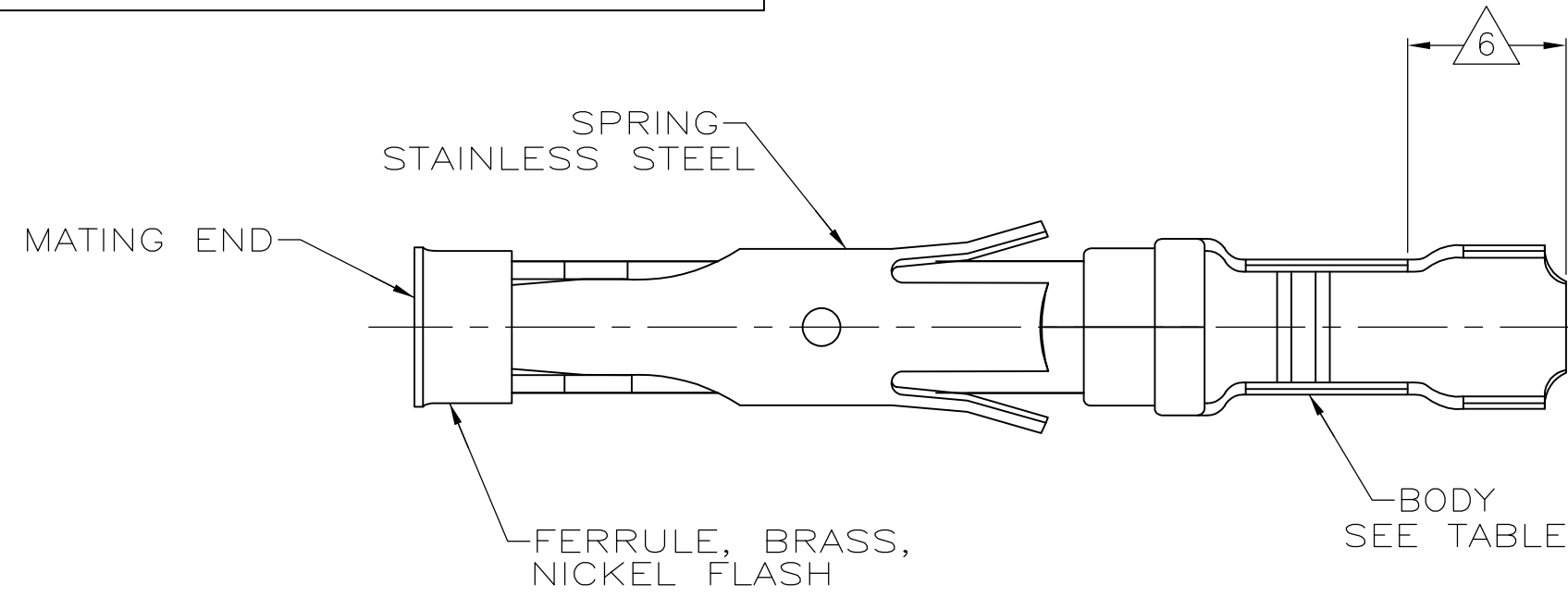
- [Email or Chat With Us](#)
- [Find a Phone Number](#)
- [Knowledge Base](#)
- [Manage Your Account](#)

Keep Me Informed



THIS DRAWING IS UNPUBLISHED. RELEASED FOR PUBLICATION
 © COPYRIGHT - By - ALL RIGHTS RESERVED.

LOC		DIST		REVISIONS			
P	LTR	DESCRIPTION		DATE	DWN	APVD	
FT	47	J		REVISED PER ECO-12-012320	04JUL12	KH MZ	



- 1 0.76µm [.000030] MIN GOLD PER MIL-G-45204 ON MATING END FOR A LENGTH OF 5.08 [.200] MIN WITH 1.27µm [.000050] MIN MATTE TIN PLATE IN WIRE CRIMP AREA, BOTH OVER 0.76µm [.000030] MIN NICKEL PER QQ-N-290.
- 2 1.27µm [.000050] MIN TIN-LEAD PER MIL-T-10727 OVER 0.76µm [.000030] MIN NICKEL PER QQ-N-290.
- 3 0.76µm [.000030] MIN GOLD PER MIL-G-45204 ON MATING END FOR A LENGTH OF 5.08 [.200] MIN WITH A UNIFORM GRADIENT TO 0.25µm [.000010] MIN GOLD PER MIL-G-45204 ON THE REMAINDER OVER 0.76µm [.000030] NICKEL PER QQ-N-290.
- 4 0.38µm [.000015] MIN GOLD PER MIL-G-45204 ON MATING END FOR A LENGTH OF 5.08 [.200] MIN WITH 1.27µm [.000050] MIN MATTE TIN PLATE IN WIRE CRIMP AREA, BOTH OVER 0.76µm [.000030] MIN NICKEL PER QQ-N-290.
- 5 1.27µm [.000050] MIN GOLD PER MIL-G-45204 ON MATING END FOR A LENGTH OF 5.08 [.200] MIN WITH GOLD FLASH ON REMAINDER OVER 1.90µm [.000075] MIN NICKEL PER QQ-N-290.
- 6 GOLD PLATING NOT REQUIRED IN THIS AREA
- 7 WIRE RANGE 24-20 AWG. INSULATION RANGE 1.02[.040]-2.03[.080].
- 8 0.38µm [.000015] MIN GOLD PER MIL-G-45204 ON MATING END FOR A LENGTH OF 5.08 [.200] MIN, 1.27µm [.000050] MIN TIN-LEAD PER MIL-T-10727 FOR A LENGTH OF 5.69 [.224] MIN ON OPPOSITE END, BOTH OVER 1.27µm [.000050] MIN NICKEL PER QQ-N-290 ON ENTIRE CONTACT.
- 9 1.27µm [.000050] MIN TIN PER MIL-T-10727 OVER 0.76µm [.000030] MIN NICKEL PER QQ-N-290.
- 10 OBSOLETE PARTS: OBSOLETE CIS STREAMLINING PER D.RENAUD/D.SINISI

OB	PKG	FIN	MAT	STRIP P/N REF	PART NO
	SMALL PACK	9	BRASS	1-66105-9	2-66105-0
	STNDARD	9	BRASS	3-66104-0	1-66105-9
	SMALL PACK	1	BRASS	66104-4	1-66105-8
10	SMALL PACK	4	BRASS	66104-3	1-66105-7
	SMALL PACK	2	BRASS	66104-2	1-66105-6
	SMALL PACK	3	BRASS	66104-1	1-66105-5
OBSOLETE	STANDARD	8	BRASS	2-66104-6	1-66105-4
OBSOLETE	STANDARD	1	PHOSPHOR BRONZE	2-66104-3	1-66105-3
OBSOLETE	STANDARD	2	PHOSPHOR BRONZE	2-66104-2	1-66105-2
OBSOLETE	STANDARD	5	BRASS	1-66104-6	1-66105-0
	STANDARD	1	BRASS	66104-4	66105-4
	STANDARD	4	BRASS	66104-3	66105-3
	STANDARD	2	BRASS	66104-2	66105-2
	STANDARD	3	BRASS	66104-1	66105-1
	PACKAGING TYPE	BODY FINISH	BODY MATERIAL	STRIP P/N REF	PART NO

THIS DRAWING IS A CONTROLLED DOCUMENT.

DWN	L.SIPE	06/01/92
CHK	W.LENKER	6-11-92
APVD	G.STEINHAUER	7-8-92
PRODUCT SPEC	NAME	
APPLICATION SPEC	SOCKET ASSEMBLY, LOOSE PIECE, TYPE III+	
WEIGHT	SCALE	SHEET
SEE CALLOUTS	8:1	1 OF 1
SEE CALLOUTS	CAGE CODE	REV
	A2 00779	J
	DRAWING NO	
	C=66105	
	RESTRICTED TO	

CUSTOMER DRAWING