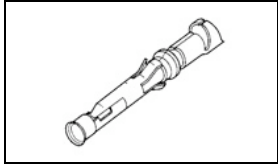


66181-1 Product Details



66181-1

TE Internal Number: 66181-1



Multimate

 Always EU RoHS/ELV Compliant (Statement of Compliance)

Product Highlights:

- Contact Type = Socket
- Contact Classification = Signal
- Type III+ Series
- Gold (30) Contact Plating, Mating Area, Material
- Wire Range = 0.80-1.40² [18-16] mm [AWG]

Documentation & Additional Information

Product Drawings:

- [SOCKET ASSEMBLY, LOOSE PIECE, TYPE III+](#) (PDF, English)

Catalog Pages/Data Sheets:

- [Signal Contacts](#) (PDF, English)
- [M_SERIES_PIN_AND_SOCKET_CONNECTORS](#) (PDF, English)
- [AMP Circular Connectors for Commercial Signal & Powe...](#) (PDF, English)

Product Specifications:

- None Available

Application Specifications:

- [Type III+ \(Size 16\) Contacts](#) (PDF, English)

Instruction Sheets:

- None Available

CAD Files: (CAD Format & Compression Information)

- [2D Drawing](#) (DXF, Version J)
- [3D Model](#) (IGES, Version J)
- [3D Model](#) (STEP, Version J)

Additional Information:

- [Product Line Information](#)

Related Products:

- [Tooling](#)

Product Features (Please use the Product Drawing for all design activity)

Product Type Features:

- Series = Type III+
- [Insulation Support](#) = Yes
- [Termination Method to Wire/Cable](#) = Solder
- Wire/Cable Type = Discrete Wire
- Grade = Commercial

Electrical Characteristics:

- High Current = No

Termination Features:

- [Termination End Plating](#) = Gold

Dimensions:

- Pin Diameter (mm [in]) = 1.57 [0.062]

Body Features:

- [Wire Range \(mm \[AWG\]\)](#) = 0.80-1.40² [18-16]
- Spring Material = Stainless Steel
- Used With = M Series Connectors, CPC Connectors

Contact Features:

- Contact Type = Socket
- Contact Classification = Signal
- [Contact Plating, Mating Area, Material](#) = Gold (30)
- [Contact Base Material](#) = Copper Alloy
- [Contact Size](#) = 16

Industry Standards:

- [RoHS/ELV Compliance](#) = RoHS compliant, ELV compliant
- [Lead Free Solder Processes](#) = Not relevant for lead free process
- RoHS/ELV Compliance History = Always was RoHS compliant

Conditions for Usage:

- [Applies To](#) = Wire/Cable
- Test Current (A) = 13.0

Packaging Features:

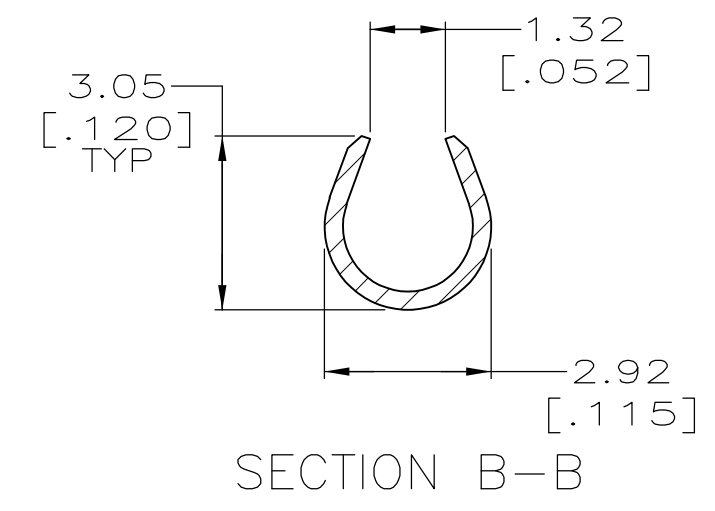
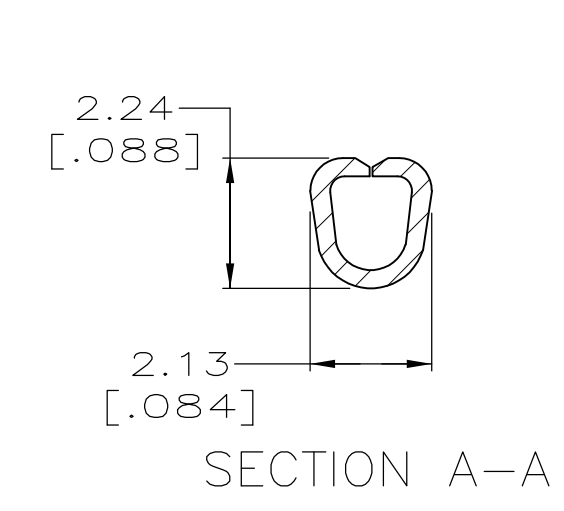
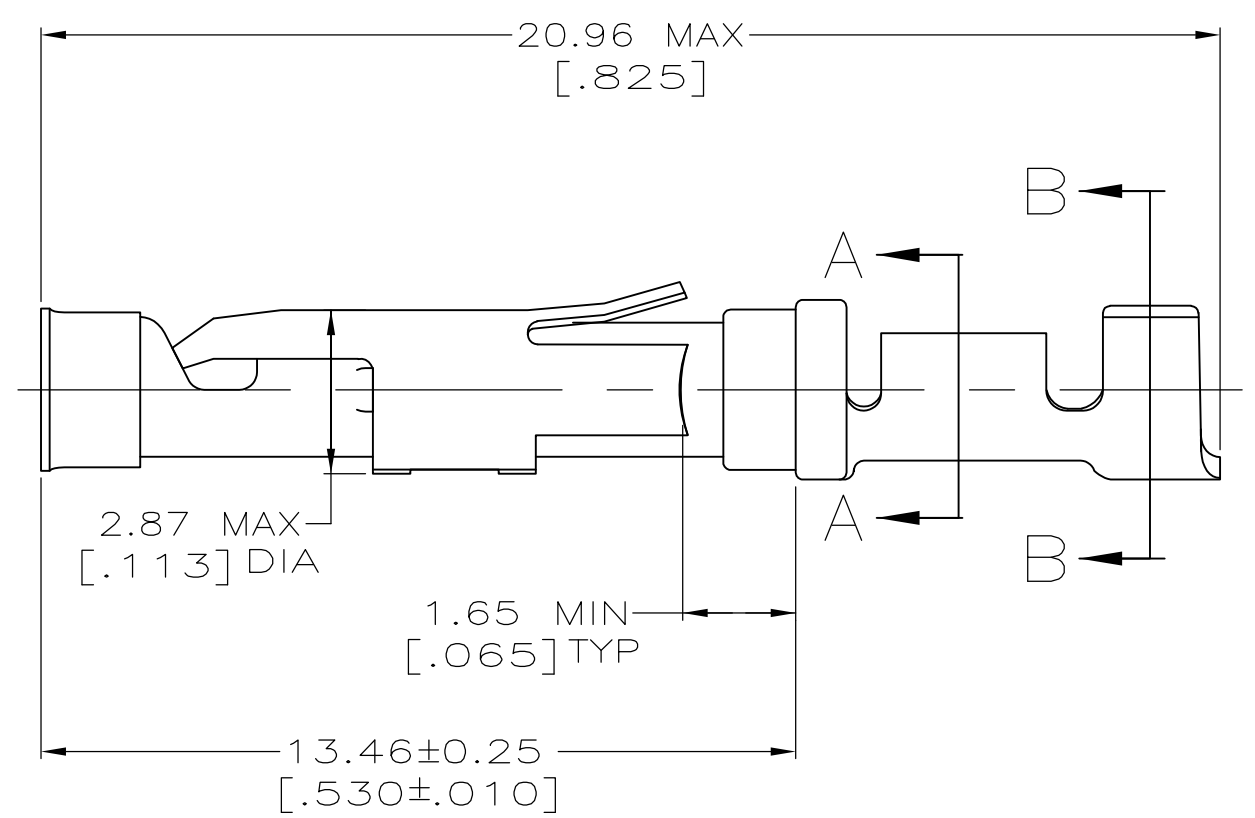
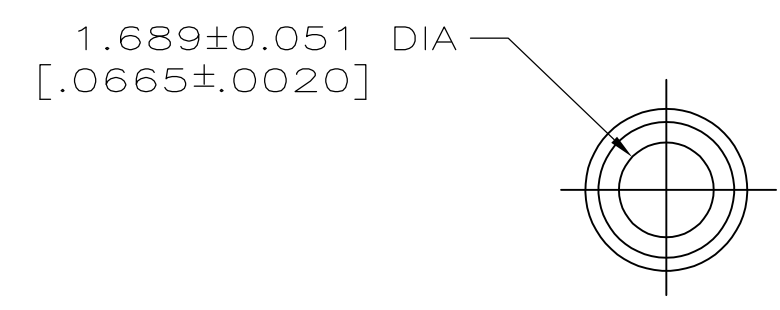
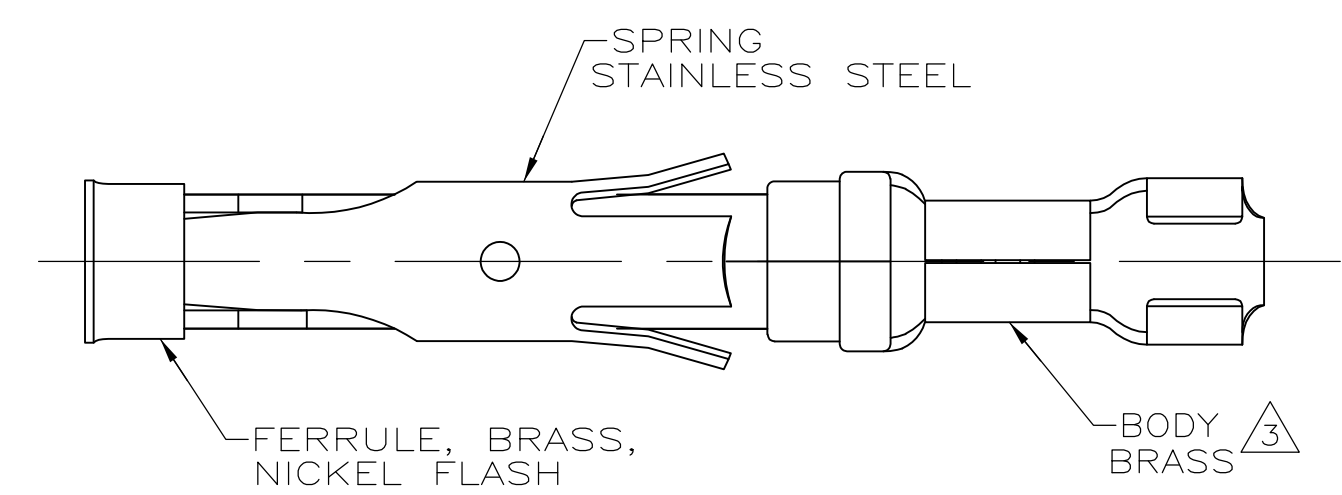
- [Packaging Method](#) = Loose Piece/Bulk

Other:

- Brand = AMP
- Comment = These contacts can be used in MultiMate contact positions of all connector housings.

LOC	DIST	REVISIONS			
P	LTR	DESCRIPTION	DATE	DWN	APVD
FT	47	J1	REVISED PER ECO-11-005027	11MAR11	RK HMR

1. WIRE RANGE 18-16 AWG.
2. COLOR CODED BLUE IN SPRING DIMPLE AREA.
3. $0.76\mu\text{m}$ [.000030] MIN GOLD PER MIL-G-45204 ON MATING END FOR A LENGTH OF 5.08 [.200] MIN WITH A UNIFORM GRADIENT TO $0.25\mu\text{m}$ [.000010] MIN GOLD PER MIL-G-45204 ON INSULATION SUPPORT BARREL OVER $0.76\mu\text{m}$ [.000030] MIN NICKEL PER QQ-N-290.



SMALL PACK	66181-3
STANDARD	66181-1
PACKAGING TYPE	PART NO

THIS DRAWING IS A CONTROLLED DOCUMENT.		DWN R. SHIREY 7-29-91	STE TE Connectivity	
DIMENSIONS: MM[INCHES]		CHK R. STONE 9-19-91		
TOLERANCES UNLESS OTHERWISE SPECIFIED:		APVD J. WESTMAN 9-20-91	NAME SOCKET ASSEMBLY, LOOSE PIECE, TYPE III+	
0 PLC ± -		PRODUCT SPEC	SIZE CAGE CODE DRAWING NO	
1 PLC ± -		APPLICATION SPEC	A2 00779 G-66181	
2 PLC ± 0.13[.005]		RESTRICTED TO	-	
3 PLC ± -		WEIGHT	-	
4 PLC ± -		CUSTOMER DRAWING	SCALE 8:1 SHEET 1 OF 1 REV J1	
ANGLES ± ± -				
FINISH				
SEE CALLOUTS				