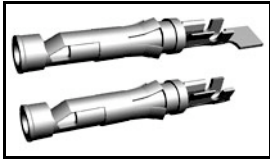


66360-4 Product Details

[Share](#) [Print](#) [Email](#)



66360-4

TE Internal Number: 66360-4

Active

[View 3D PDF](#)

Multimate

Always EU RoHS/ELV Compliant
(Statement of Compliance)

Product Highlights:

- Contact Type = Socket
- Contact Classification = Signal
- Type III+ Series
- Gold (30) Contact Plating, Mating Area, Material
- Wire Range = 0.80-2.00² [18-14] mm [AWG]

[View all Features](#)

Quick Links

- ▶ [Pricing & Availability](#)
- ▶ [Search for Tooling](#)
- ▶ [Product Feature Selector](#)
- ▶ [Contact Us About This Product](#)

[Add to My Part List](#) [Request Sample](#) [Find Similar Products](#)

[Buy Product](#)

Documentation & Additional Information

Product Drawings:

- [SOCKET ASSEMBLY, LOOSE PIECE, TYPE III+ \(PDF, English\)](#)

Catalog Pages/Data Sheets:

- [Signal Contacts \(PDF, English\)](#)
- [M_SERIES_PIN_AND_SOCKET_CONNECTORS \(PDF, English\)](#)
- [AMP Circular Connectors for Commercial Signal & Power... \(PDF, English\)](#)

Product Specifications:

- None Available

Application Specifications:

- [Type III+ \(Size 16\) Contacts \(PDF, English\)](#)

Instruction Sheets:

- [Selection of Multimate Pin and Socket Contacts \(PDF, English\)](#)

CAD Files: (CAD Format & Compression Information)

- [2D Drawing \(DXF, Version H\)](#)
- [3D Model \(IGES, Version H\)](#)
- [3D Model \(STEP, Version H\)](#)

[List all Documents](#)

Additional Information:

- [Product Line Information](#)

Additional Product Images:

- [Line Drawing](#)

Related Products:

- [Tooling](#)

Product Features (Please use the Product Drawing for all design activity)

Product Type Features:

- Series = Type III+
- [Insulation Support](#) = Yes
- [Termination Method to Wire/Cable](#) = Crimp
- Wire/Cable Type = Discrete Wire
- Grade = Commercial

Electrical Characteristics:

- High Current = No

Termination Features:

- [Termination End Plating](#) = Matte Tin Over Nickel

Dimensions:

Industry Standards:

- [RoHS/ELV Compliance](#) = RoHS compliant, ELV compliant
- [Lead Free Solder Processes](#) = Not relevant for lead free process
- [RoHS/ELV Compliance History](#) = Always was RoHS compliant

Conditions for Usage:

- [Accepts Wire Insulation Diameter, Range \(mm \[in\]\)](#) = 2.03 - 2.54 [0.080 - 0.100]
- [Applies To](#) = Wire/Cable
- Test Current (A) = 13.0

- Pin Diameter (mm [in]) = 1.57 [0.062]

Body Features:

- Wire Range (mm [AWG]) = 0.80-2.00² [18-14]
- Spring Material = Stainless Steel
- Used With = M Series Connectors, CPC Connectors, G Series Connectors

Contact Features:

- Contact Type = Socket
- Contact Classification = Signal
- Contact Plating, Mating Area, Material = Gold (30)
- Contact Base Material = Brass
- Contact Size = 16

Packaging Features:

- Packaging Method = Loose Piece
- Packaging Quantity = 1,000 Box/Carton

Other:

- Brand = AMP
- Comment = Overall insulation crimp diameter, including crimp barrel, must not exceed 3.18 [.125].; Insertion Tool No. 91002-1 (for Insulation Dia. 1.78 [.070] or less), No. 200893-2 (for Insulation Dia. .090 [2.29] max.) Extraction Tool No. 305183.

Corporate Information

- [About TE](#)
- [Investors](#)
- [News Room](#)
- [Supplier Portal](#)
- [Careers](#)
- [Terms & Conditions](#)
- [Privacy Policy](#)

Quick Links

- [Distributor Inventory](#)
- [Product Cross Reference](#)
- [Documents & Drawings](#)
- [Product Compliance Support Center](#)
- [Site Map](#)

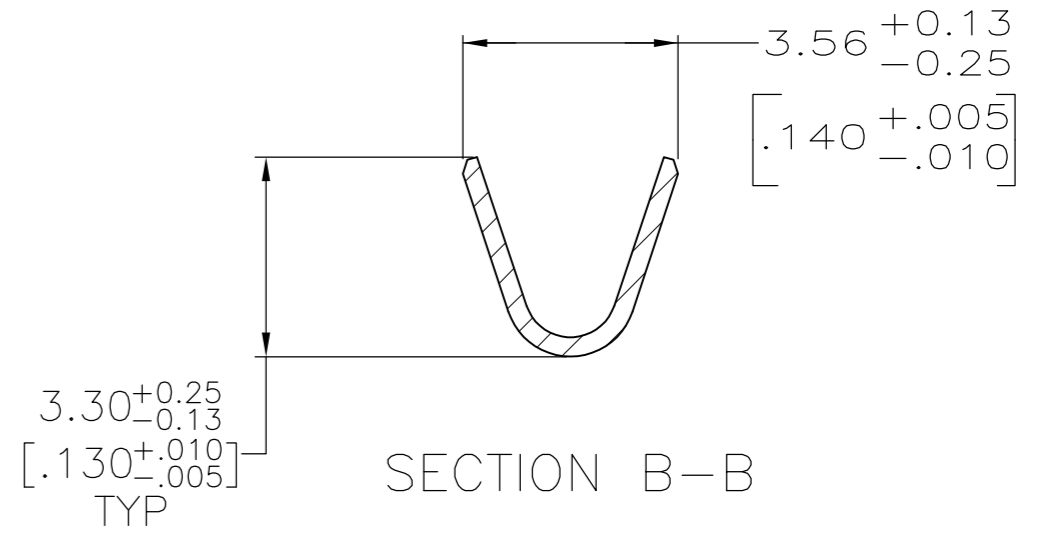
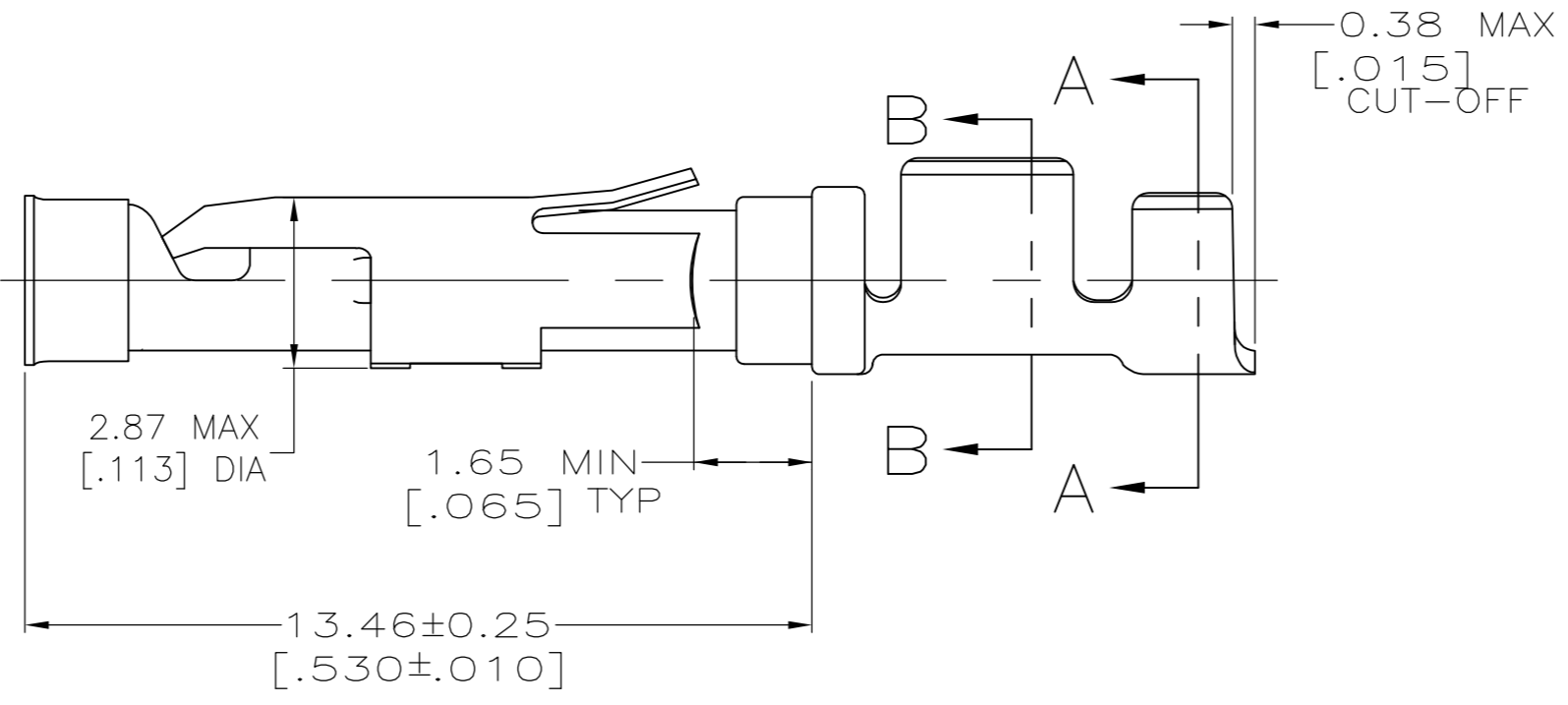
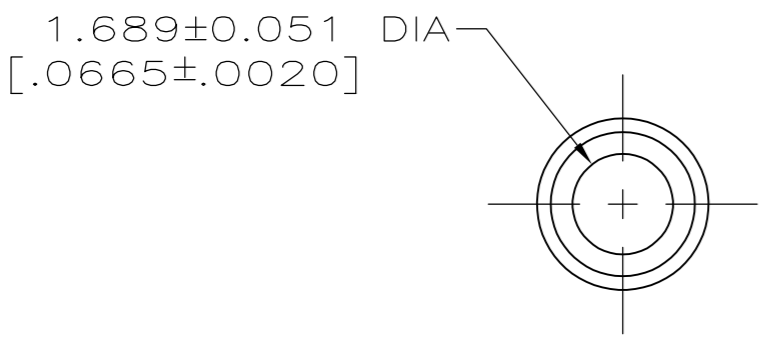
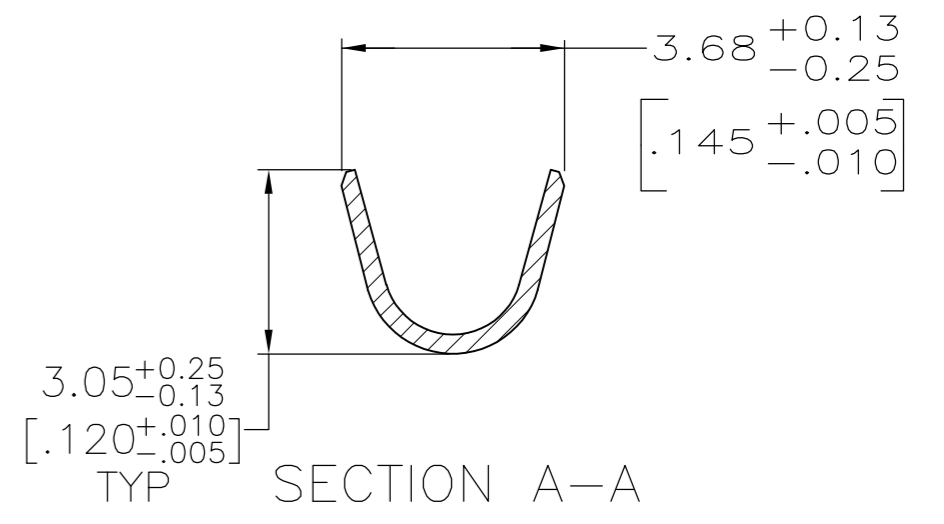
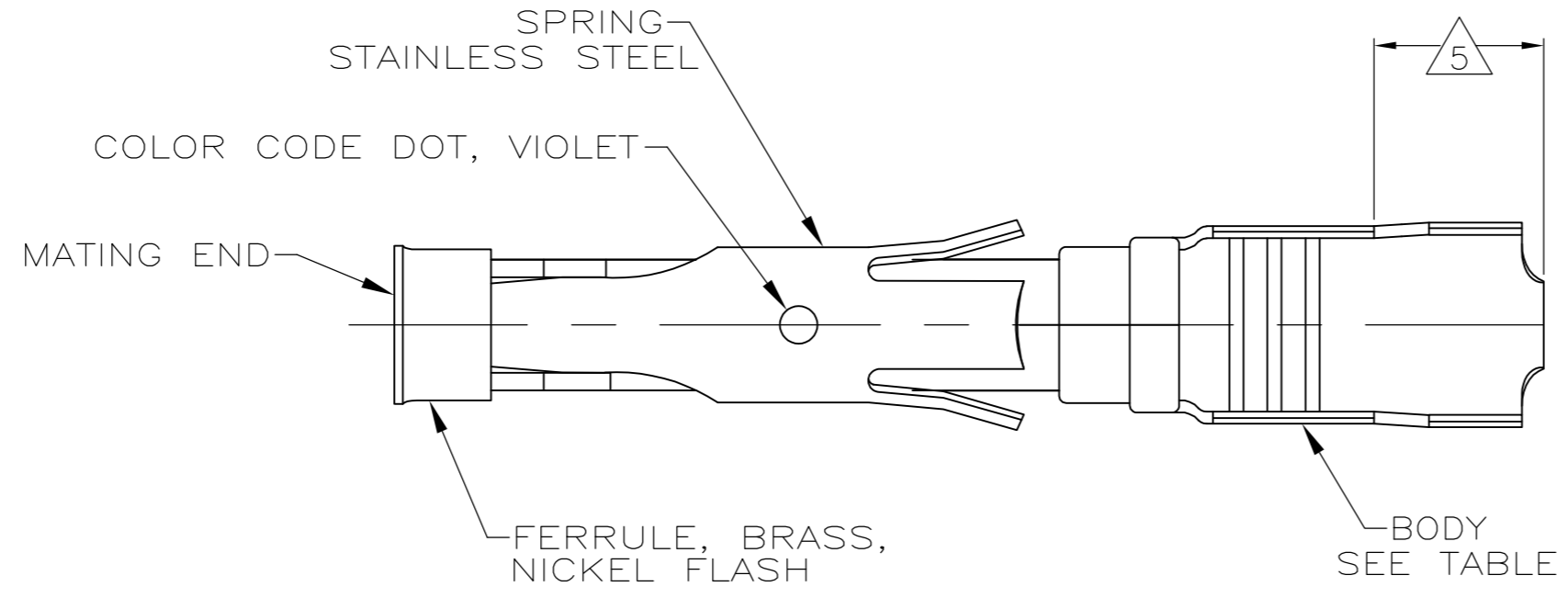
Customer Support

- [Email or Chat With Us](#)
- [Find a Phone Number](#)
- [Knowledge Base](#)
- [Manage Your Account](#)

Keep Me Informed

THIS DRAWING IS UNPUBLISHED. RELEASED FOR PUBLICATION
 © COPYRIGHT - By - ALL RIGHTS RESERVED.

LOC		DIST		REVISIONS			
P	LTR	DESCRIPTION		DATE	DWN	APVD	
FT	0	J	REVISED PER ECO-12-012320	05JUL12	KH	MZ	



- 1 0.76µm [.000030] MIN GOLD PER MIL-G-45204 ON MATING END FOR A LENGTH OF 5.08 [.200] MIN WITH GOLD FLASH ON THE REMAINDER OVER 0.76µm [.000030] MIN NICKEL PER QQ-N-290.
- 2 1.27µm [.000050] MIN TIN-LEAD PER MIL-T-10727 OVER 0.76µm [.000030] MIN NICKEL PER QQ-N-290.
- 3 0.76µm [.000030] MIN GOLD PER MIL-G-45204 ON MATING END FOR A LENGTH OF 5.08 [.200] MIN WITH A UNIFORM GRADIENT TO 0.25µm [.000010] MIN GOLD PER MIL-G-45204 ON THE REMAINDER OVER 0.76µm [.000030] MIN NICKEL PER QQ-N-290.
- 4 0.38µm [.000015] MIN GOLD PER MIL-G-45204 ON MATING END FOR A LENGTH OF 5.08 [.200] MIN WITH 1.27µm [.000050] MIN MATTE TIN PLATE IN WIRE CRIMP AREA, BOTH OVER 0.76µm [.000030] MIN NICKEL PER QQ-N-290.
- 5 GOLD PLATING NOT REQUIRED IN THIS AREA.
- 6 WIRE RANGE 18-16 AWG. INSULATION RANGE 2.03 [.080]-2.54 [.100].
- 7 0.38µm [.000015] MIN GOLD PER MIL-G-45204 ON MATING END FOR A LENGTH OF 5.08 [.200] MIN, 1.27µm [.000050] MIN TIN-LEAD PER MIL-T-10727 FOR A LENGTH OF 5.69 [.224] MIN ON OPPOSITE END, BOTH OVER 1.27µm [.000050] MIN NICKEL PER QQ-N-290 ON ENTIRE CONTACT.
- 8 1.27µm [.000050] MIN TIN PER MIL-T-10727 OVER 0.76µm [.000030] MIN NICKEL PER QQ-N-290.
- 9 0.76µm [.000030] MIN GOLD PER MIL-G-45204 ON MATING END FOR A LENGTH OF 5.08 [.200] MIN WITH 1.27µm [.000050] MIN MATTE TIN PLATE IN WIRE CRIMP AREA, BOTH OVER 0.76µm [.000030] MIN NICKEL PER QQ-N-290.

	STANDARD	8	CU-NI ALLOY	2-66358-1	1-66360-6
	STANDARD	2	CU-NI ALLOY	2-66358-0	1-66360-5
	STANDARD	1	CU-NI ALLOY	1-66358-9	1-66360-4
	SMALL PACK	8	BRASS	1-66358-6	1-66360-3
	STANDARD	8	BRASS	1-66358-6	1-66360-2
	SMALL PACK	9	BRASS	66358-4	1-66360-1
	SMALL PACK	2	BRASS	66358-2	1-66360-0
OBSOLETE	STANDARD	7	BRASS	1-66358-5	66360-9
	STANDARD	1	PHOSPHOR BRONZE	1-66358-3	66360-8
OBSOLETE	STANDARD	2	PHOSPHOR BRONZE	1-66358-2	66360-7
	STANDARD	9	BRASS	66358-4	66360-4
	STANDARD	4	BRASS	66358-3	66360-3
	STANDARD	2	BRASS	66358-2	66360-2
	STANDARD	3	BRASS	66358-1	66360-1
PACKAGING	BODY FINISH	BODY MATERIAL	STRIP P/N REF	PART NUMBER	

THIS DRAWING IS A CONTROLLED DOCUMENT.

DIMENSIONS: mm [INCHES]	TOLERANCES UNLESS OTHERWISE SPECIFIED:	DWN L.SIPE 06/03/92	TE Connectivity
	0 PLC ± -	CHK W.LENKER 6-11-92	
	1 PLC ± -	APVD G.STEINHAUER 7-8-92	
	2 PLC ± 0.13 [.005]	NAME	
MATERIAL SEE CALLOUTS	FINISH SEE TABLE	PRODUCT SPEC	SOCKET ASSEMBLY, LOOSE PIECE, TYPE III+
		APPLICATION SPEC	SIZE A2 CAGE CODE 00779 DRAWING NO C=66360 RESTRICTED TO
		WEIGHT -	SCALE 8:1 SHEET 1 of 1 REV J
		CUSTOMER DRAWING	