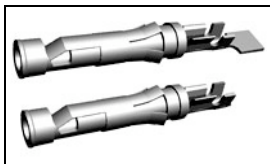




## 66399-3 Product Details

[Share](#) | [Print](#) | [Email](#)


66399-3

TE Internal Number: 66399-3

Active

View 3D PDF

## Multimate

Always EU RoHS/ELV Compliant (Statement of Compliance)

## Product Highlights:

- Contact Type = Socket
- Contact Classification = Signal
- Type III+ Series
- Gold (15) Contact Plating, Mating Area, Material
- Wire Range = 0.20-0.60<sup>2</sup> [24-20] mm [AWG]

[View all Features](#)

## Quick Links

- ▶ [Pricing & Availability](#)
- ▶ [Search for Tooling](#)
- ▶ [Product Feature Selector](#)
- ▶ [Contact Us About This Product](#)

[Add to My Part List](#)
[Request Sample](#)
[Find Similar Products](#)
[Buy Product](#)

## Documentation &amp; Additional Information

## Product Drawings:

- [SOCKET ASSEMBLY, LOOSE PIECE, TYPE \(PDF, English\)](#)

## Catalog Pages/Data Sheets:

- [Signal Contacts \(PDF, English\)](#)
- [M\\_SERIES\\_PIN\\_AND\\_SOCKET\\_CONNECTORS \(PDF, English\)](#)
- [AMP Circular Connectors for Commercial Signal & Powe... \(PDF, English\)](#)

## Product Specifications:

- None Available

## Application Specifications:

- [Type III+ \(Size 16\) Contacts \(PDF, English\)](#)

## Instruction Sheets:

- [Selection of Multimate Pin and Socket Contacts \(PDF, English\)](#)

## CAD Files: (CAD Format &amp; Compression Information)

- [2D Drawing \(DXF, Version H\)](#)
- [3D Model \(IGES, Version H\)](#)
- [3D Model \(STEP, Version H\)](#)

[List all Documents](#)

## Additional Information:

- [Product Line Information](#)

## Related Products:

- [Tooling](#)

## Product Features (Please use the Product Drawing for all design activity)

## Product Type Features:

- Series = Type III+
- Insulation Support = Yes
- Termination Method to Wire/Cable = Crimp
- Wire/Cable Type = Discrete Wire
- Grade = Commercial

## Electrical Characteristics:

- High Current = No

## Termination Features:

- Termination End Plating = Matte Tin Over Nickel

## Dimensions:

- Pin Diameter (mm [in]) = 1.57 [0.062]

## Body Features:

- Wire Range (mm [AWG]) = 0.20-0.60<sup>2</sup> [24-20]
- Spring Material = Stainless Steel
- Used With = M Series Connectors, CPC Connectors, G Series Connectors

## Contact Features:

- Contact Type = Socket
- Contact Classification = Signal
- Contact Plating, Mating Area, Material = Gold (15)

## Industry Standards:

- [RoHS/ELV Compliance](#) = RoHS compliant, ELV compliant
- [Lead Free Solder Processes](#) = Not relevant for lead free process
- [RoHS/ELV Compliance History](#) = Always was RoHS compliant

## Conditions for Usage:

- [Accepts Wire Insulation Diameter, Range \(mm \[in\]\)](#) = 2.03 - 2.54 [0.080 - 0.100]
- [Applies To](#) = Wire/Cable
- [Test Current \(A\)](#) = 13.0

## Packaging Features:

- [Packaging Method](#) = Loose Piece
- [Packaging Quantity](#) = 1,000 Box/Carton

## Other:

- Brand = AMP
- Comment = Overall insulation crimp diameter, including crimp barrel, must not exceed 3.18 [.125].; Insertion Tool No. 91002-1 (for Insulation Dia. 1.78 [.070] or less), No. 200893-2 (for Insulation Dia. .090 [2.29] max.) Extraction Tool No. 305183.

- [Contact Base Material](#) = Brass
- [Contact Size](#) = 16

### Corporate Information

- [About TE](#)
- [Investors](#)
- [News Room](#)
- [Supplier Portal](#)
- [Careers](#)
- [Terms & Conditions](#)
- [Privacy Policy](#)

### Quick Links

- [Distributor Inventory](#)
- [Product Cross Reference](#)
- [Documents & Drawings](#)
- [Product Compliance Support Center](#)
- [Site Map](#)

### Customer Support

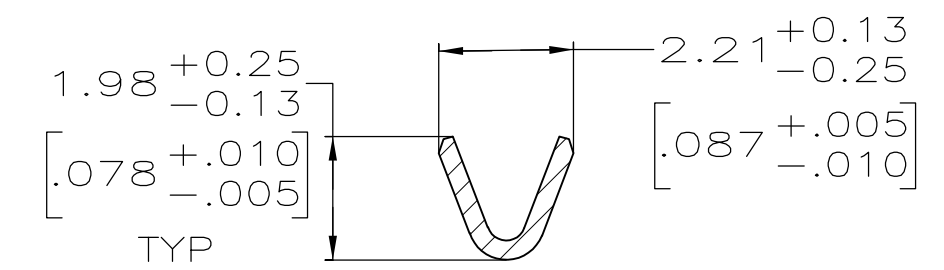
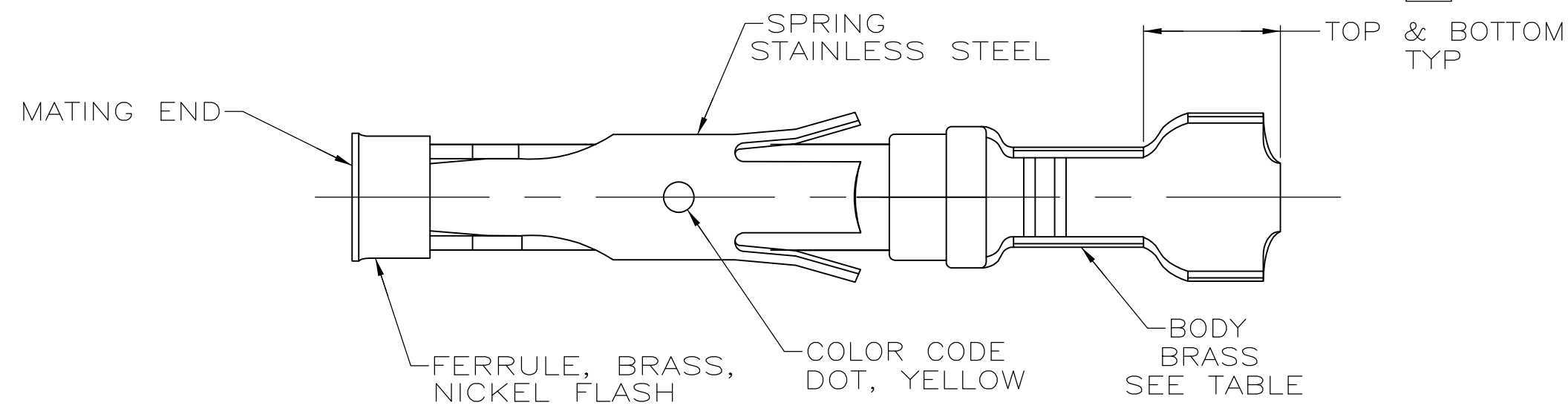
- [Email or Chat With Us](#)
- [Find a Phone Number](#)
- [Knowledge Base](#)
- [Manage Your Account](#)

### Keep Me Informed

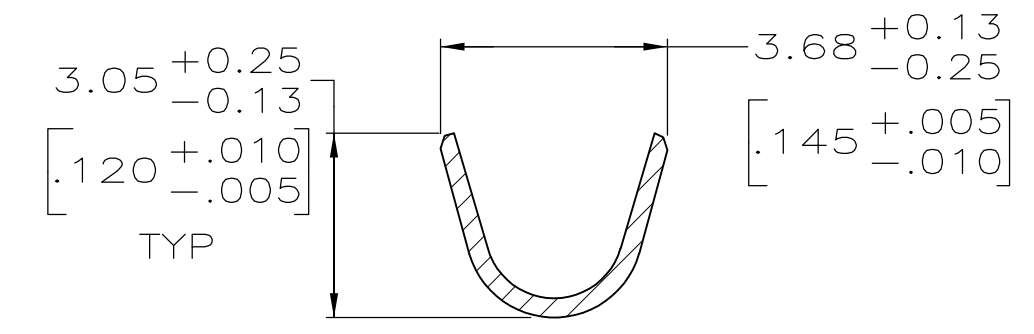


THIS DRAWING IS UNPUBLISHED. RELEASED FOR PUBLICATION  
 © COPYRIGHT - By - ALL RIGHTS RESERVED.

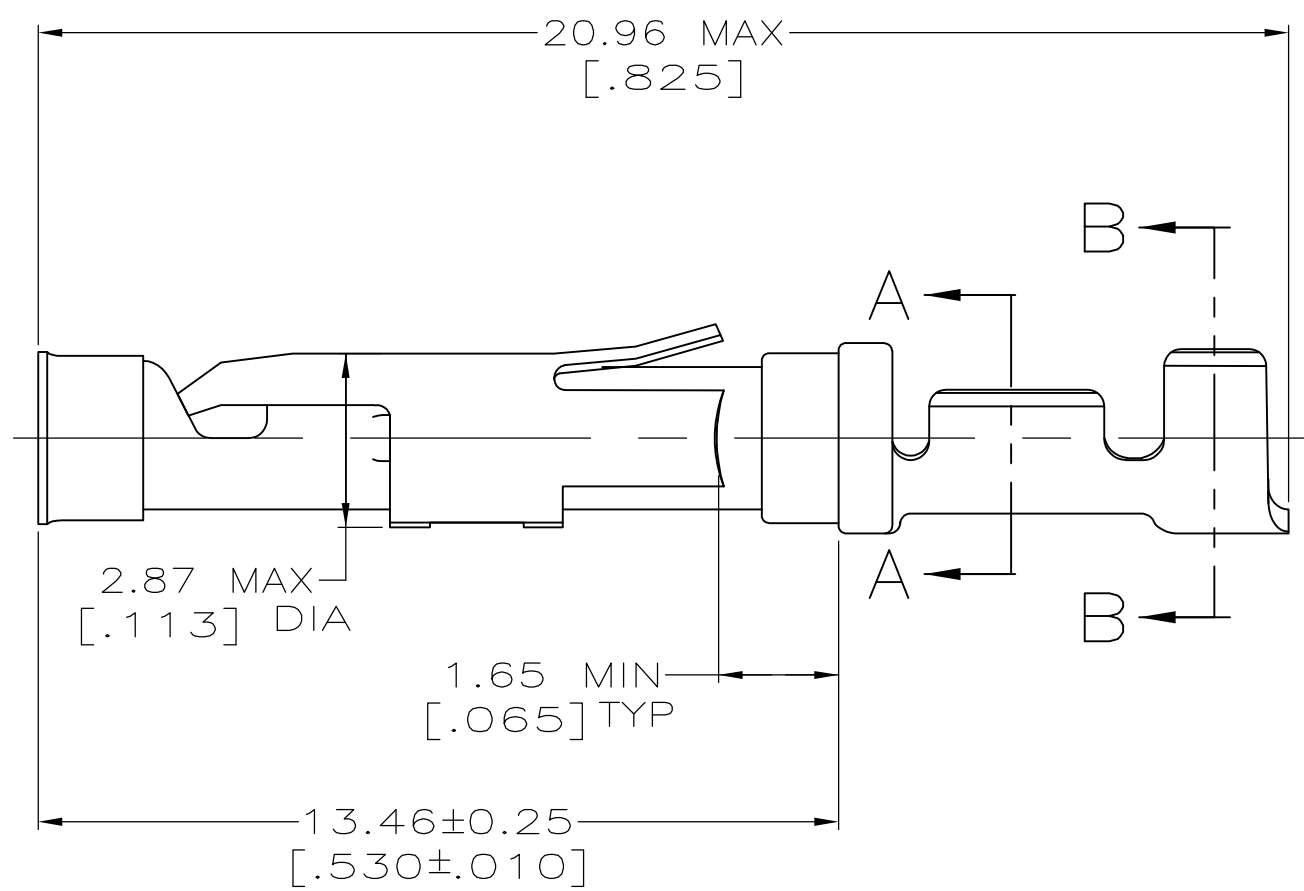
LOC	DIST	REVISIONS					
FT	47	P	LTR	DESCRIPTION	DATE	DWN	APVD
		P		REVISED PER ECO-12-012320	05JUL12	KH	MZ



SECTION A-A



SECTION B-B



- ① 0.76µm [.000030] MIN GOLD PER MIL-G-45204 ON MATING END FOR A LENGTH OF 5.08 [.200] MIN WITH 1.27µm [.000050] MIN MATTE TIN PLATE IN WIRE CRIMP AREA, BOTH OVER 0.76µm [.000030] MIN NICKEL PER QQ-N-290.
- ② 0.76µm [.000030] MIN GOLD PER MIL-G-45204 ON MATING END FOR A LENGTH OF 5.08 [.200] MIN WITH A UNIFORM GRADIENT TO 0.25µm [.000010] MIN GOLD PER MIL-G-45204 ON THE REMAINDER OVER 0.76µm [.000030] MIN NICKEL PER QQ-N-290.
- ③ 0.38µm [.000015] MIN GOLD PER MIL-G-45204 ON MATING END FOR A LENGTH OF 5.08 [.200] MIN WITH 1.27µm [.000050] MIN MATTE TIN PLATE IN WIRE CRIMP AREA, BOTH OVER 0.76µm [.000030] MIN NICKEL PER QQ-N-290.
- ④ 1.27µm [.000050] MIN TIN-LEAD PER MIL-T-10727 OVER 0.76µm [.000030] MIN NICKEL PER QQ-N-290.
- ⑤ GOLD PLATING NEED NOT APPEAR IN THIS AREA.
- ⑥ WIRE RANGE 24-20 AWG. INSULATION RANGE 2.03 [.080]-2.54 [.100].
- ⑦ 0.38µm [.000015] MIN GOLD PER MIL-G-45204 ON MATING END FOR A LENGTH OF 5.08 [.200] MIN, 1.27µm [.000050] MIN TIN-LEAD PER MIL-T-10727 FOR A LENGTH OF 5.69 [.224] MIN ON OPPOSITE END, BOTH OVER 1.27µm [.000050] MIN NICKEL PER QQ-N-290 ON ENTIRE CONTACT.
- ⑧ 1.27µm [.000050] MIN TIN PER MIL-T-10727 OVER 0.76µm [.000030] MIN NICKEL PER QQ-N-290.
- ⑨ OBSOLETE PARTS: OBSOLETE CIS STREAMLINING PER D.RENAUD/D.SINISI

PACKAGING TYPE	BODY FINISH	STRIP P/N REF	PART NO
SMALL PACK	⑧	1-66399-0	1-66399-1
STANDARD	⑧	1-66331-4	1-66399-0
SMALL PACK	①	66331-4	66399-9
⑨ OBSOLETE SMALL PACK	③	66331-7	66399-8
⑨ OBSOLETE SMALL PACK	②	66331-2	66399-7
SMALL PACK	④	66331-1	66399-6
OBSOLETE STANDARD	⑦	1-66331-2	66399-5
STANDARD	①	66331-4	66399-4
STANDARD	③	66331-7	66399-3
STANDARD	②	66331-2	66399-2
STANDARD	④	66331-1	66399-1

THIS DRAWING IS A CONTROLLED DOCUMENT.

DWN R.SHIREY 7-30-91	<p>TE Connectivity</p>	<p>NAME</p> <p>SOCKET ASSEMBLY, LOOSE PIECE, TYPE III+</p>				
CHK R.STONE 9-19-91						
APVD J.ESTMAN 9-20-91						
PRODUCT SPEC						
MATERIAL SEE CALLOUTS	FINISH SEE CALLOUTS	WEIGHT -	SIZE A2	CAGE CODE 00779	DRAWING NO C=66399	RESTRICTED TO -
CUSTOMER DRAWING		SCALE 8:1	SHEET 1 of 1	REV P		