



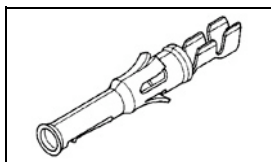
Have a Question?
 Chat with a Product
 Information Specialist

What can we help you find?

[Products](#) [Industries](#) [Resources](#) [About TE](#) [My Account](#) [Innovation](#) [Support Center](#)

66590-4 Product Details

[Share](#) [Print](#) [Email](#)



66590-4

TE Internal Number: 66590-4

Active

[View 3D PDF](#)

Multimate

Always EU RoHS/ELV Compliant (Statement of Compliance)

Product Highlights:

- Contact Type = Socket
- Contact Classification = Signal
- Type VI Series
- Gold (30) Contact Plating, Mating Area, Material
- Wire Range = 0.80-1.40² [18-16] mm [AWG]

[View all Features](#)

Quick Links

- ▶ [Pricing & Availability](#)
- ▶ [Search for Tooling](#)
- ▶ [Product Feature Selector](#)
- ▶ [Contact Us About This Product](#)

[Add to My Part List](#) [Request Sample](#) [Find Similar Products](#) [Buy Product](#)

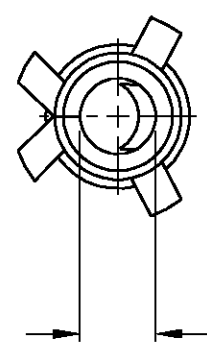
Documentation & Additional Information	
<p>Product Drawings:</p> <ul style="list-style-type: none"> • CONTACT, SOCKET, LOOSE PIECE, TYPE VI, MULTIMATE (PDF, English) <p>Catalog Pages/Data Sheets:</p> <ul style="list-style-type: none"> • None Available <p>Product Specifications:</p> <ul style="list-style-type: none"> • None Available <p>Application Specifications:</p> <ul style="list-style-type: none"> • Type VI Insulation Grip Contacts (PDF, English) <p>Instruction Sheets:</p> <ul style="list-style-type: none"> • None Available <p>CAD Files: (CAD Format & Compression Information)</p> <ul style="list-style-type: none"> • 2D Drawing (DXF, Version G) • 3D Model (IGES, Version G) • 3D Model (STEP, Version G) 	<p>Additional Information:</p> <ul style="list-style-type: none"> • Product Line Information <p>Related Products:</p> <ul style="list-style-type: none"> • Tooling

[List all Documents](#)

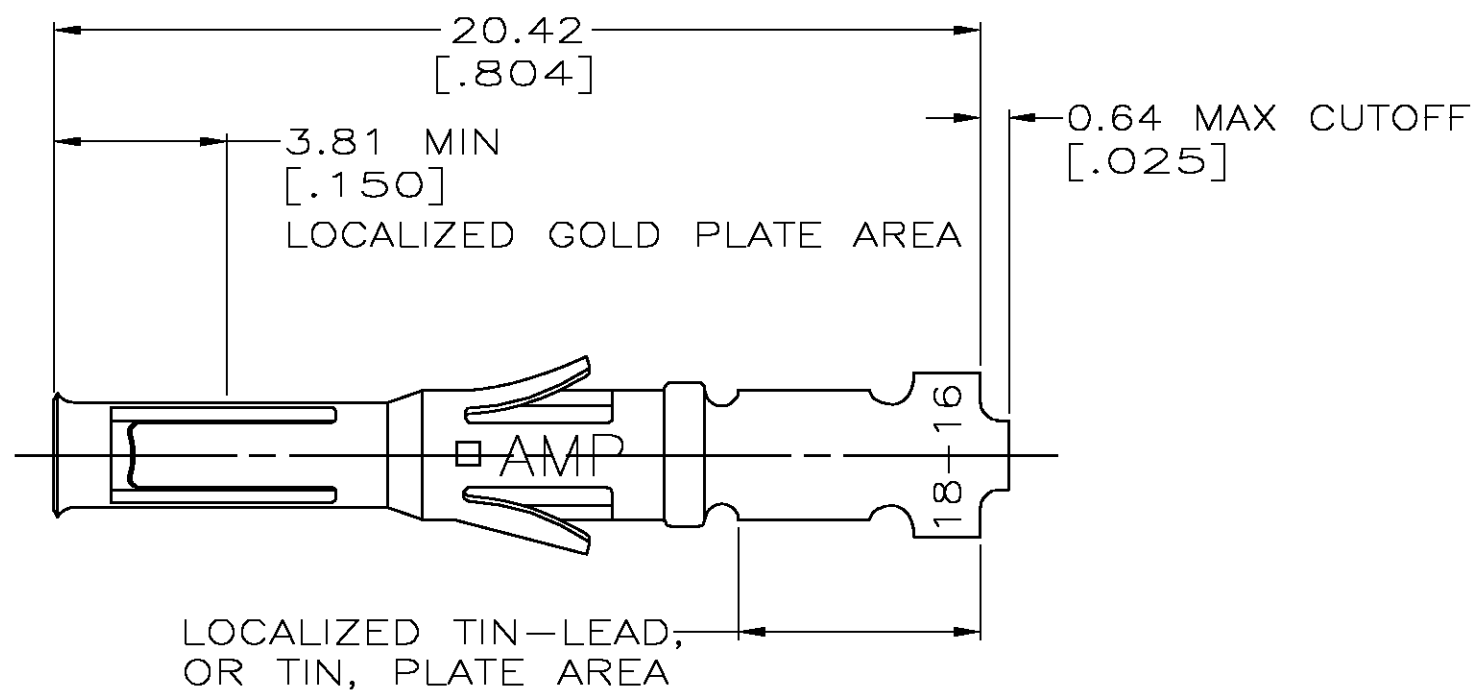
Product Features (Please use the Product Drawing for all design activity)	
<p>Product Type Features:</p> <ul style="list-style-type: none"> • Series = Type VI • Insulation Support = Yes • Termination Method to Wire/Cable = Crimp • Wire/Cable Type = Discrete Wire • Grade = Commercial <p>Electrical Characteristics:</p> <ul style="list-style-type: none"> • High Current = No <p>Termination Features:</p> <ul style="list-style-type: none"> • Termination End Plating = Tin <p>Dimensions:</p> <ul style="list-style-type: none"> • Pin Diameter (mm [in]) = 1.57 [0.062] <p>Body Features:</p> <ul style="list-style-type: none"> • Wire Range (mm [AWG]) = 0.80-1.40² [18-16] • Spring Material = Stainless Steel • Used With = G Series Connectors 	<p>Contact Features:</p> <ul style="list-style-type: none"> • Contact Type = Socket • Contact Classification = Signal • Contact Plating, Mating Area, Material = Gold (30) • Contact Base Material = Brass • Contact Size = 16 <p>Industry Standards:</p> <ul style="list-style-type: none"> • RoHS/ELV Compliance = RoHS compliant, ELV compliant • Lead Free Solder Processes = Not relevant for lead free process • RoHS/ELV Compliance History = Always was RoHS compliant <p>Conditions for Usage:</p> <ul style="list-style-type: none"> • Accepts Wire Insulation Diameter, Range (mm [in]) = 2.03 - 2.54 [0.080 - 0.100] • Applies To = Wire/Cable • Test Current (A) = 13.0 <p>Packaging Features:</p> <ul style="list-style-type: none"> • Packaging Method = Loose Piece <p>Other:</p> <ul style="list-style-type: none"> • Brand = AMP • Comment = Wire strip length-- 3.96 [.156] for all wire sizes.

THIS DRAWING IS UNPUBLISHED. RELEASED FOR PUBLICATION
 © COPYRIGHT BY TYCO ELECTRONICS CORPORATION. ALL RIGHTS RESERVED.

LOC	DIST	REVISIONS			
P	LTR	DESCRIPTION	DATE	DWN	APVD
BD	39	G	0G3B-0317-03	24APR03	TK GS



ACCOMODATES
1.57 DIA PIN
[.062]



LOCALIZED TIN-LEAD,
OR TIN, PLATE AREA

1. WIRE RANGE 18-16 AWG.
2. INSULATION RANGE 2.03-2.54 [.080-.100] DIA.
3. 0.76µm [.000030] MIN GOLD IN LOCALIZED GOLD PLATE AREA,
1.27µm [.000050] MIN TIN-LEAD IN LOCALIZED TIN-LEAD PLATE AREA,
BOTH OVER 1.27µm [.000050] MIN NICKEL.
4. TIN PLATED.
5. GOLD PLATING PER MIL-G-45204, TIN PER MIL-T-10727
AND NICKEL PER QQ-N-290.
6. 0.76µm [.000030] MIN GOLD IN LOCALIZED GOLD PLATE AREA,
1.27µm [.000050] MIN TIN IN LOCALIZED TIN PLATE AREA,
BOTH OVER 1.27µm [.000050] MIN NICKEL.

STRIP REF	FINISH	PART NO
66580-7	6	66590-4
66580-4	3	66590-2
66580-2	4	66590-1

THIS DRAWING IS A CONTROLLED DOCUMENT.		DWN D.HARDY 06/15/94	Tyco Electronics Corporation Harrisburg, Pa	
DIMENSIONS: INCHES		CHK R.STONE 06/22/94	NAME CONTACT, SOCKET, LOOSE PIECE, TYPE VI, MULTIMATE	
TOLERANCES UNLESS OTHERWISE SPECIFIED:		APVD G.STEINHAUER 06/27/94	PRODUCT SPEC	
0 PLC ± -		APPLICATION SPEC		
1 PLC ± -		SIZE		
2 PLC ± 0.13 [.005]		CAGE CODE		
3 PLC ± -		DRAWING NO		
4 PLC ± -		RESTRICTED TO		
ANGLES ± -		A3 00779 C-66590		
MATERIAL	FINISH	WEIGHT		
BRS PER MIL-C-50	5 SEE TABLE	CUSTOMER DRAWING		
		SCALE	SHEET	REV
		6:1	1 OF 1	G