

Distributed by:

JAMECO[®]
ELECTRONICS

www.Jameco.com ♦ 1-800-831-4242

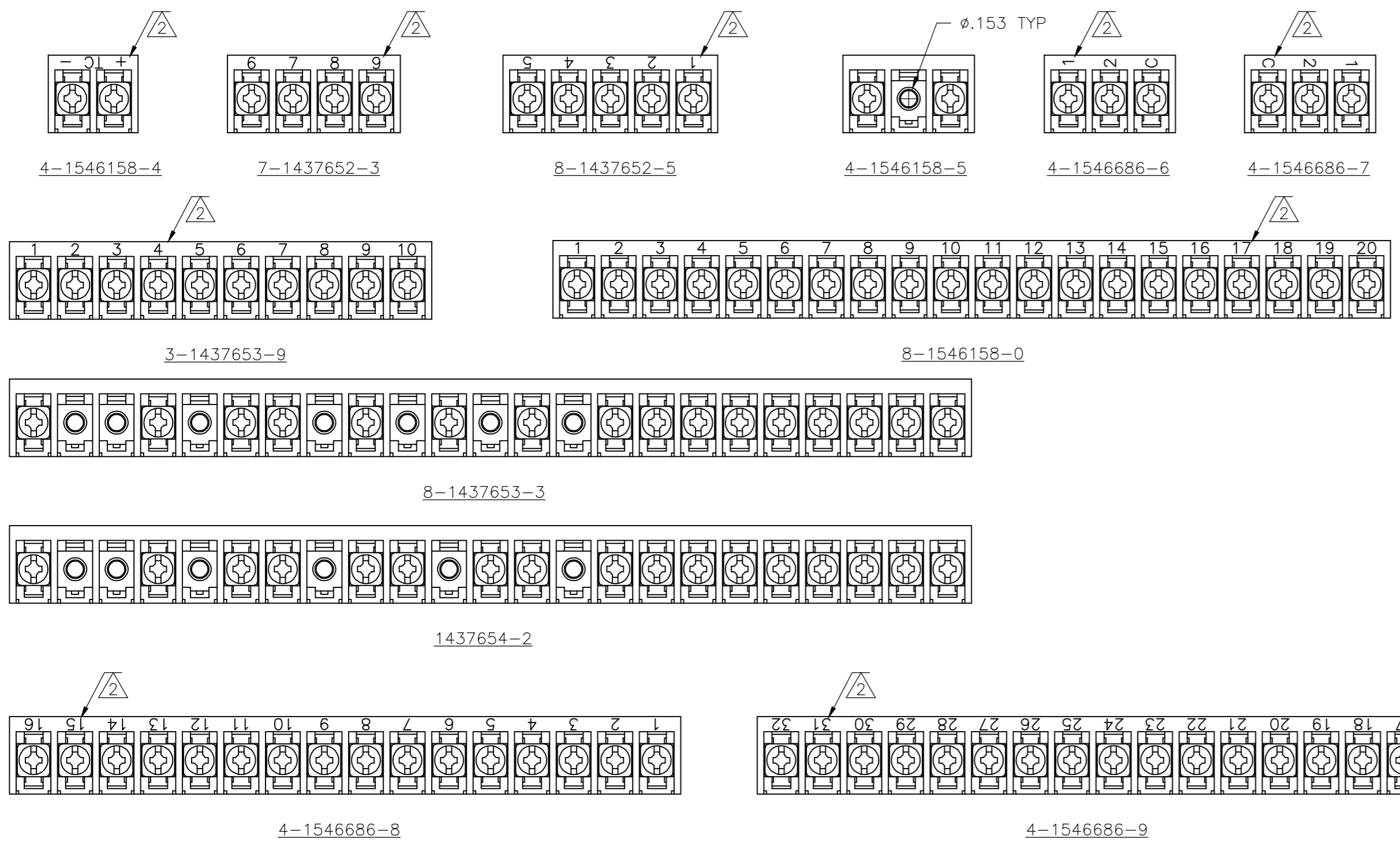
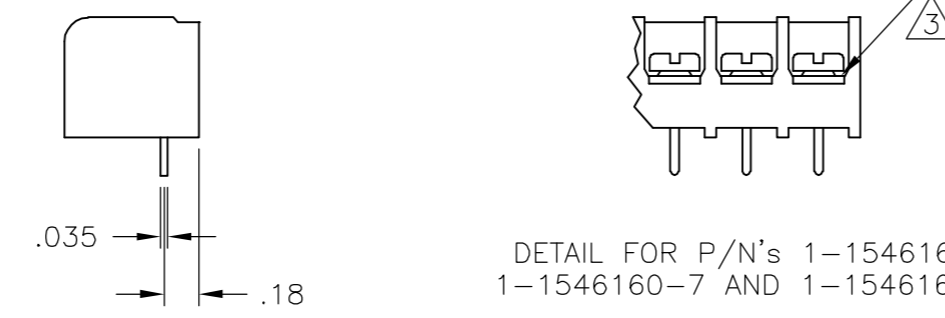
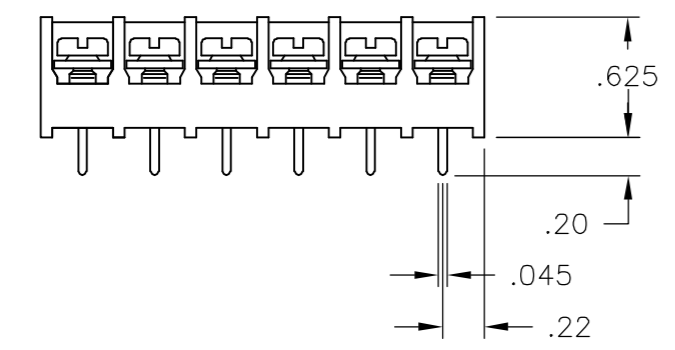
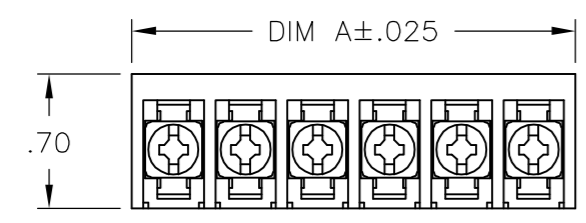
The content and copyrights of the attached
material are the property of its owner.

Jameco Part Number 1961647

THIS DRAWING IS UNPUBLISHED. RELEASED FOR PUBLICATION
 © COPYRIGHT BY TYCO ELECTRONICS CORPORATION. ALL RIGHTS RESERVED.

| LOC | DIST | REVISIONS | | | | | |
|-----|------|-----------|-----|--------------------------|----------|-----|------|
| FT | 0 | P | LTR | DESCRIPTION | DATE | DWN | APVD |
| | | H2 | | REVISED PER ECO-06-26338 | 11/13/06 | SS | SRY |

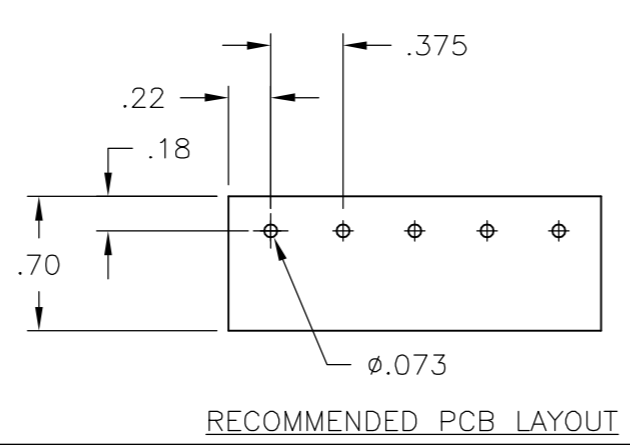
- NOTES:
- △ CAPTIVE SCREWS.
 - △ MARK WITH WHITE PERMANENT INK.
 - △ ALL SCREWS TO BE DRIVEN DOWN TO TERMINAL SURFACE.
 - △ NICKEL PLATED BRASS SCREWS.
 - △ PRELIMINARY PART NUMBER.



MATERIAL:
 HOUSING: THERMOPLASTIC, UL94V-0 BLACK.
 TERMINALS: BRIGHT TIN PLATED, COPPER ALLOY.
 SCREWS: 6-32, STEEL, ZINC PLATED WITH CLEAR CHROMATE.

ELECTRICAL:
 CURRENT RATING UL/CSA:
 CLASS C: 25A, 300V.
 CLASS D: 5A, 600V.
 WIRE RANGE: 12-22 AWG

MECHANICAL:
 RECOMMENDED TIGHTENING TORQUE: 7 IN-LBS.
 OPERATING TEMP.: 105°C MAX



| SEE FIGURE | REV | DESCRIPTION | DATE | DWN | APVD |
|------------|-----|--------------|-------------|-----|------|
| 11.311 | 30 | 6PCV-30-006 | 4-1546686-5 | | |
| 10.936 | 29 | 6PCV-29-006 | 1-1437656-2 | | |
| 10.561 | 28 | 6PCV-28-006 | 8-1546158-6 | | |
| 10.186 | 27 | 6PCV-27-006 | 8-1546158-5 | | |
| 9.811 | 26 | 6PCV-26-006 | 4-1437654-5 | | |
| 9.436 | 25 | 6PCV-25-006 | 4-1437654-1 | | |
| 9.061 | 24 | 6PCV-24-006 | 8-1546158-2 | | |
| 8.686 | 23 | 6PCV-23-006 | 4-1546686-3 | | |
| 8.311 | 22 | 6PCV-22-006 | 3-1437654-4 | | |
| 7.936 | 21 | 6PCV-21-006 | 3-1437654-1 | | |
| 7.561 | 20 | 6PCV-20-323 | 8-1546158-0 | | |
| 7.561 | 20 | 6PCV-20-006 | 1-1437654-9 | | |
| 7.186 | 19 | 6PCV-19-006 | 1-1437654-4 | | |
| 6.811 | 18 | 6PCV-18-006 | 1437654-7 | | |
| 6.866 | 17 | 6PCV-17-899 | 1437654-2 | | |
| 6.436 | 17 | 6PCV-17-006 | 9-1437653-8 | | |
| 6.061 | 16 | 6PCV-16-1389 | 4-1546686-9 | | |
| 6.061 | 16 | 6PCV-16-1388 | 4-1546686-8 | | |
| 6.061 | 16 | 6PCV-16-1047 | 8-1437653-3 | | |
| 6.061 | 16 | 6PCV-16-006 | 8-1437653-0 | | |
| 5.686 | 15 | 6PCV-15-1298 | 1-1546160-8 | | |
| 5.686 | 15 | 6PCV-15-006 | 7-1437653-4 | | |
| 5.311 | 14 | 6PCV-14-006 | 6-1437653-8 | | |
| 4.936 | 13 | 6PCV-13-1297 | 1-1546160-7 | | |
| 4.936 | 13 | 6PCV-13-006 | 6-1437653-3 | | |
| 4.561 | 12 | 6PCV-12-1296 | 1-1546160-6 | | |
| 4.561 | 12 | 6PCV-12-006 | 5-1437653-1 | | |
| 4.186 | 11 | 6PCV-11-006 | 4-1437653-5 | | |
| 3.811 | 10 | 6PCV-10-1269 | 3-1437653-9 | | |
| 3.811 | 10 | 6PCV-10-006 | 3-1437653-5 | | |
| 3.436 | 9 | 6PCV-09-002 | 1546262-3 | | |
| 3.436 | 9 | 6PCV-09-006 | 2-1437653-5 | | |
| 3.061 | 8 | 6PCV-08-1394 | 1546262-7 | | |
| 3.061 | 8 | 6PCV-08-1314 | 1-1437653-7 | | |
| 3.061 | 8 | 6PCV-08-006 | 1-1437653-3 | | |
| 2.686 | 7 | 6PCV-07-006 | 1437653-7 | | |
| 2.311 | 6 | 6PCV-06-002 | 1546262-4 | | |
| 2.311 | 6 | 6PCV-06-006 | 9-1437652-5 | | |
| 1.936 | 5 | 6PCV-05-002 | 5-1546686-0 | | |
| 1.936 | 5 | 6PCV-05-1267 | 8-1437652-5 | | |
| 1.936 | 5 | 6PCV-05-006 | 8-1437652-2 | | |
| 1.561 | 4 | 6PCV-04-1268 | 7-1437652-3 | | |
| 1.561 | 4 | 6PCV-04-1143 | 7-1437652-2 | | |
| 1.561 | 4 | 6PCV-04-006 | 6-1437652-7 | | |
| 1.186 | 3 | 6PCV-03-1385 | 4-1546686-7 | | |
| 1.186 | 3 | 6PCV-03-1384 | 4-1546686-6 | | |
| 1.186 | 3 | 6PCV-03-006 | 5-1437652-4 | | |
| .811 | 2 | 6PCV-02-1393 | 1546262-6 | | |
| 1.186 | 2 | 6PCV-02-807 | 4-1546158-5 | | |
| .811 | 2 | 6PCV-02-1313 | 4-1437652-5 | | |
| .811 | 2 | 6PCV-02-1216 | 4-1546158-4 | | |
| .811 | 2 | 6PCV-02-006 | 3-1437652-9 | | |

| | | | | |
|--|--------|------------------|----------|---------------|
| THIS DRAWING IS A CONTROLLED DOCUMENT. | | DWN | R BROWN | 22APR03 |
| DIMENSIONS: INCHES | | CHK | H WAKEEM | 22APR03 |
| TOLERANCES UNLESS OTHERWISE SPECIFIED: | | APVD | H WAKEEM | 22APR03 |
| 0 PLC | ± - | NAME | | |
| 1 PLC | ± - | 6PCV-XX-006 | | |
| 2 PLC | ± .02 | SIZE | A2 | CAGE CODE |
| 3 PLC | ± .010 | SCALE | 1:1 | DRAWING NO |
| 4 PLC | ± - | WEIGHT | - | RESTRICTED TO |
| ANGLES | ± 1° | CUSTOMER DRAWING | SCALE | 1:1 |
| FINISH | - | SHEET | | 1 of 1 |
| | | REV | | H2 |