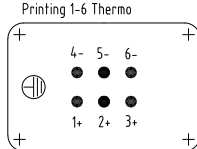
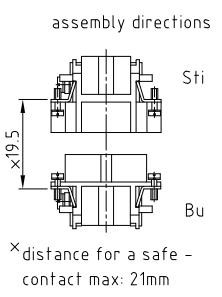
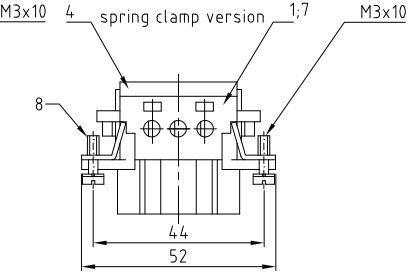
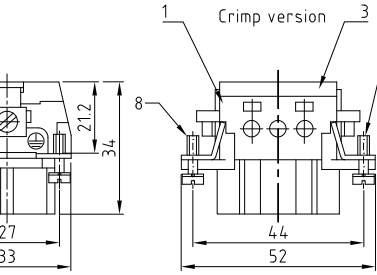
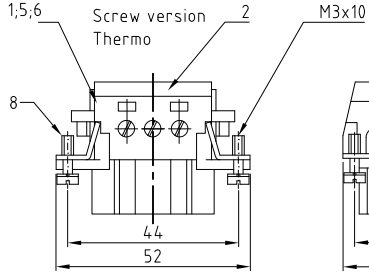


THIS DRAWING IS UNPUBLISHED.
VERTRAULICHE UNVERÖFFENTLICHTE ZEICHNUNG
© COPYRIGHT 1998
BY AMP INCORPORATED. ALLE RECHTE VORBEHALTEN

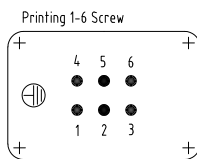
RELEASED FOR PUBLICATION
FREI FÜR VERÖFFENTLICHUNG
1998
ALL RIGHTS RESERVED

MATED WITH
PASSEND ZU:
BG3

LOC	DIST	P	LTR	REVISIONS ÄNDERUNGEN	DATE	DWN	APVD
AI	-			DESCRIPTION BESCHREIBUNG			
PROJECT NR: A8				text for packaging corrected ECR-98-001603	22.01.08	SR	ST

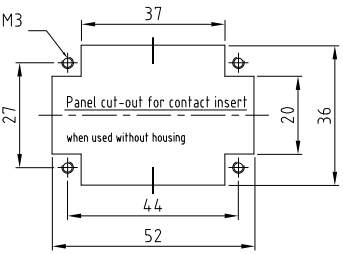


Contact arrangement
view from termination side

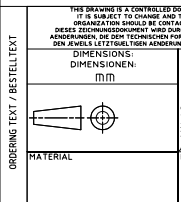


- NOTES:
- SUITABLE CRIMP CONTACTS: SERIES HE/HA
OUTER DIMENSIONS OF INSULATION: MAX. 83,2 MM
 - SUITABLE HOOD SIZE 3: SERIES HB, HD, HIP, EMV
SUITABLE INSERTION AND EXTRACTION TOOL:
SCREWDRIVER 0,5x3 DIN 5264
 - Strip length: Screw connection 10mm
Spring clamp connection 10mm Crimp connection 7,5mm
 - STANDARDS:
DIN EN 61984; DIN EN 60664-1
- ⚠ PACKAGING:
5 SETS IN A CARTON, PRE-MOUNTED
- ⚠ SPECIAL PACKAGING: Krauss-Haefel
PACKAGING UNIT: 150 PIECES

QTY	DESCRIPTION	MATERIAL	COLOR	ITEM NO.	NOTES
4	fixing screw	steel	nickel plated	8	M3x10
6	contact spring clamp	brass	silver plated	7	
6	contact socket screw termination	brass	gold plated	6	
6	contact socket screw termination	brass	silver plated	5	
1	cover spring clamp version		light grey	4	
1	cover crimp version		light grey	3	
1	cover screw version		light grey	2	
1	socket insert		light grey	1	



HE 6 BU S-KM	HE 6 BU S-AU	HE 6 BU SC	HE 6 BU ST	HE 6 BU S
--------------	--------------	------------	------------	-----------



DESCRIPTION	MATERIAL	COLOR	ITEM NO.	NOTES
Female insert				

AMP HTS Elektrotechnik
53819 Neunkirchen, Germany

NAME: Schweißer
DATE: 12.02.1999
APVD: 18.02.1999

PRODUCT SPEC: HE 6 BU C/S
DRAWING NO: 1103635

SIZE: A3
CAGE CODE: 00779
DRAWING NO: 1103635

CUSTOMER DRAWING / KUNDENZEICHNUNG
SCALE: MASSSTAB 1:1
SHEET: 1 OF 1
REV: A8