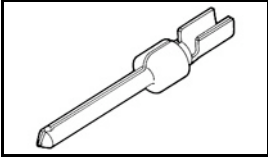


745229-7 Product Details

[Share](#) [Print](#) [Email](#)



745229-7

TE Internal Number: 745229-7

Active

[View 3D PDF](#)

Standard Cable Connectors

Always EU RoHS/ELV Compliant
(Statement of Compliance)

Product Highlights:

- Contact
- Product Series = HDP-20 (Crimp Snap)
- Contact Type = Pin
- Brass Contact Base Material
- Crimp Termination Method to Wire/Cable

[View all Features](#)

Quick Links

- ▶ [Pricing & Availability](#)
- ▶ [Search for Tooling](#)
- ▶ [Product Feature Selector](#)
- ▶ [Contact Us About This Product](#)

[Add to My Part List](#)

[Request Sample](#)

[Find Similar Products](#)

[Buy Product](#)

Documentation & Additional Information

Product Drawings:

- [PIN CONTACT, SIZE 20 DF, 18-22 AWG, .068 MAX INSULAT...](#) (PDF, English)

Catalog Pages/Data Sheets:

- [Signal Contacts](#) (PDF, English)

Product Specifications:

- [AMPLIMITE HDP-20 Subminiature D Connector With F Cri...](#) (PDF, English)

Application Specifications:

- [HD-20 Precision Formed Contacts](#) (PDF, English)
- [AMPLIMITE HDP-20 and Economy Crimp Snap Subminiature...](#) (PDF, English)

Instruction Sheets:

- [AMPLIMITE High Density \(HDP-20\) Connectors with Crim...](#) (PDF, English)
- [Insertion/Extraction Tool 91285-1 and Replacement Ti...](#) (PDF, English)

CAD Files: (CAD Format & Compression Information)

- [2D Drawing](#) (DXF, Version AA)
- [3D Model](#) (IGES, Version AA)
- [3D Model](#) (STEP, Version AA)

[List all Documents](#)

Additional Information:

- [Product Line Information](#)

Related Products:

- [Tooling](#)

Product Features (Please use the Product Drawing for all design activity)

Product Type Features:

- [Product Type](#) = Contact
- [Product Series](#) = HDP-20 (Crimp Snap)
- [Insulation Support](#) = No
- [Grade](#) = Standard

Mechanical Attachment:

- [Contact Retention in Housing](#) = Crimp Snap-In

Termination Features:

- [Termination Method to Wire/Cable](#) = Crimp

Contact Features:

- [Contact Type](#) = Pin
- [Contact Base Material](#) = Brass
- [Contact Plating, Mating Area, Material](#) = Gold Flash
- [Solder Tail Contact Plating](#) = Gold Flash over Nickel
- [Contact Size](#) = 20

Industry Standards:

- [RoHS/ELV Compliance](#) = RoHS compliant, ELV compliant
- [Lead Free Solder Processes](#) = Not relevant for lead free process

Dimensions:

- Pin Diameter (mm [in]) = 1.02 [0.040]

Body Features:

- Wire Range (mm² [AWG]) = 0.4 - 0.8 [22-18]

- RoHS/ELV Compliance History = Always was RoHS compliant

Packaging Features:

- Packaging Method = Loose Piece/Bulk

Other:

- Brand = AMP
- Comment = Wire insulation diameter is limited by the connector housing cavity and clearance for the insertion/extraction tool.

Corporate Information

[About TE](#)
[Investors](#)
[News Room](#)
[Supplier Portal](#)
[Careers](#)
[Terms & Conditions](#)
[Privacy Policy](#)

Quick Links

[Distributor Inventory](#)
[Product Cross Reference](#)
[Documents & Drawings](#)
[Product Compliance Support Center](#)
[Site Map](#)

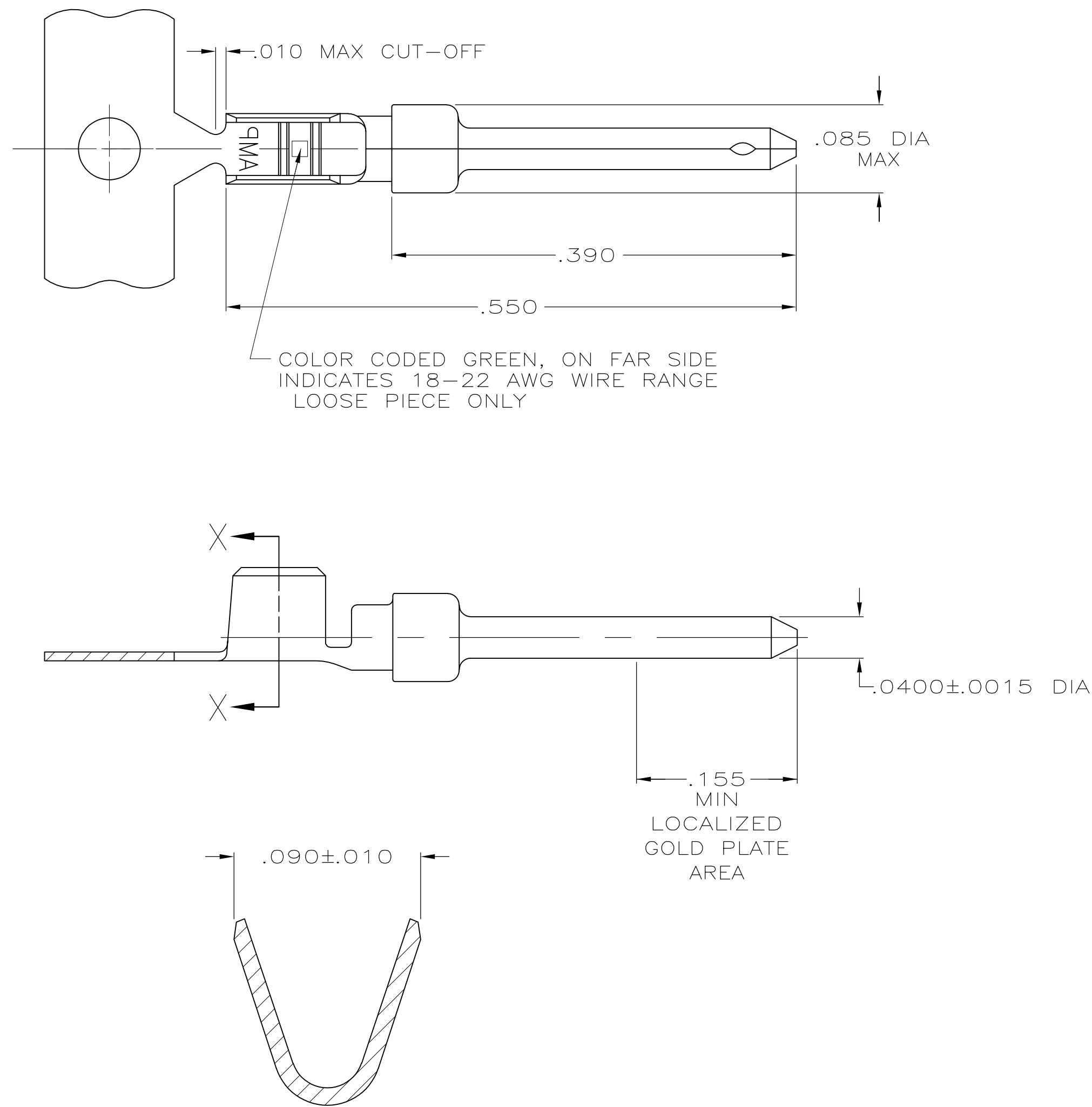
Customer Support

[Email or Chat With Us](#)
[Find a Phone Number](#)
[Knowledge Base](#)
[Manage Your Account](#)

Keep Me Informed

THIS DRAWING IS UNPUBLISHED. RELEASED FOR PUBLICATION
 © COPYRIGHT - By - ALL RIGHTS RESERVED.

LOC	DIST	REVISIONS			
P	LTR	DESCRIPTION	DATE	DWN	APVD
GP	00				
	K2	REVISED PER ECO-11-017434	19DEC2011	CJV	CWR



SECTION X-X
 WIRE BARREL
 SCALE 20:1

- 1 FOR MINI-APPLICATOR.
- 2 FOR HAND TOOL USE ONLY.
- 3. WIRE RANGE OF 18-22 AWG.
- 4. .068 MAX INSULATION DIAMETER ALLOWABLE WHEN USING 91067-2 EXTRACTION TOOL.
- 5. GOLD PLATING MAY NOT APPEAR ON CARRIER STRIP.
- 6 GOLD PLATING PER MIL-G-45204.
 NICKEL PLATING PER QQ-N-290.
 TIN PLATING PER MIL-T-10727.
- 7 GOLD PLATED IN LOCALIZED GOLD PLATE AREA AS FOLLOWS:
 .000030 MIN GOLD IN MATED AREA,
 GOLD FLASH ON REMAINDER OF CONTACT, ALL OVER .000050
 MIN NICKEL UNDERPLATE.
 OR
 GOLD FLASH OVER
 PALLADIUM-NICKEL PLATE, .000030 MIN TOTAL IN MATED AREA,
 GOLD FLASH ON REMAINDER OF CONTACT, ALL OVER
 .000050 MIN NICKEL UNDERPLATE.
- 8 PLATED WITH GOLD FLASH OVER
 .000050 MIN NICKEL.
- 9 PLATED WITH GOLD FLASH IN LOCALIZED GOLD PLATE AREA,
 TIN PLATED WIRE BARREL, OVER
 .000030 NICKEL.
- 10 GOLD PLATED IN LOCALIZED GOLD PLATE AREA
 .000030 GOLD IN MATED AREA,
 TIN PLATED WIRE BARREL, OVER
 .000050 NICKEL.
- 11 OBSOLETE.
- 12 SUPERSEDED BY 745229-4

10	11-745229-3	11-745229-1
9	11-745229-0	11-745229-8
8	745229-7	745229-5
7	745229-4	745229-2
FINISH	LOOSE PIECE 2	PART NUMBER 1

THIS DRAWING IS A CONTROLLED DOCUMENT.		DWN	9-9-86	TE Connectivity	
DIMENSIONS: INCHES		S. WELDON	9-9-86		
TOLERANCES UNLESS OTHERWISE SPECIFIED:		CHK	9-9-86		
0 PLC ± -		C. RICHARD	9-9-86	NAME	
1 PLC ± -		APVD	9-10-86	V. KUMAR	
2 PLC ± -		PRODUCT SPEC		PIN CONTACT, SIZE 20 DF, 18-22 AWG, .068 MAX INSULATION DIA	
3 PLC ± .005		APPLICATION SPEC		SIZE	CAGE CODE
4 PLC ± -		114-10000		A2	00779
ANGLES ± -		WEIGHT		DRAWING NO	RESTRICTED TO
FINISH		SEE TABLE		C=745229	-
MATERIAL		BRASS PER MIL-C-50		SCALE	SHEET
				10:1	1 of 1
				REV	K2
				CUSTOMER DRAWING	