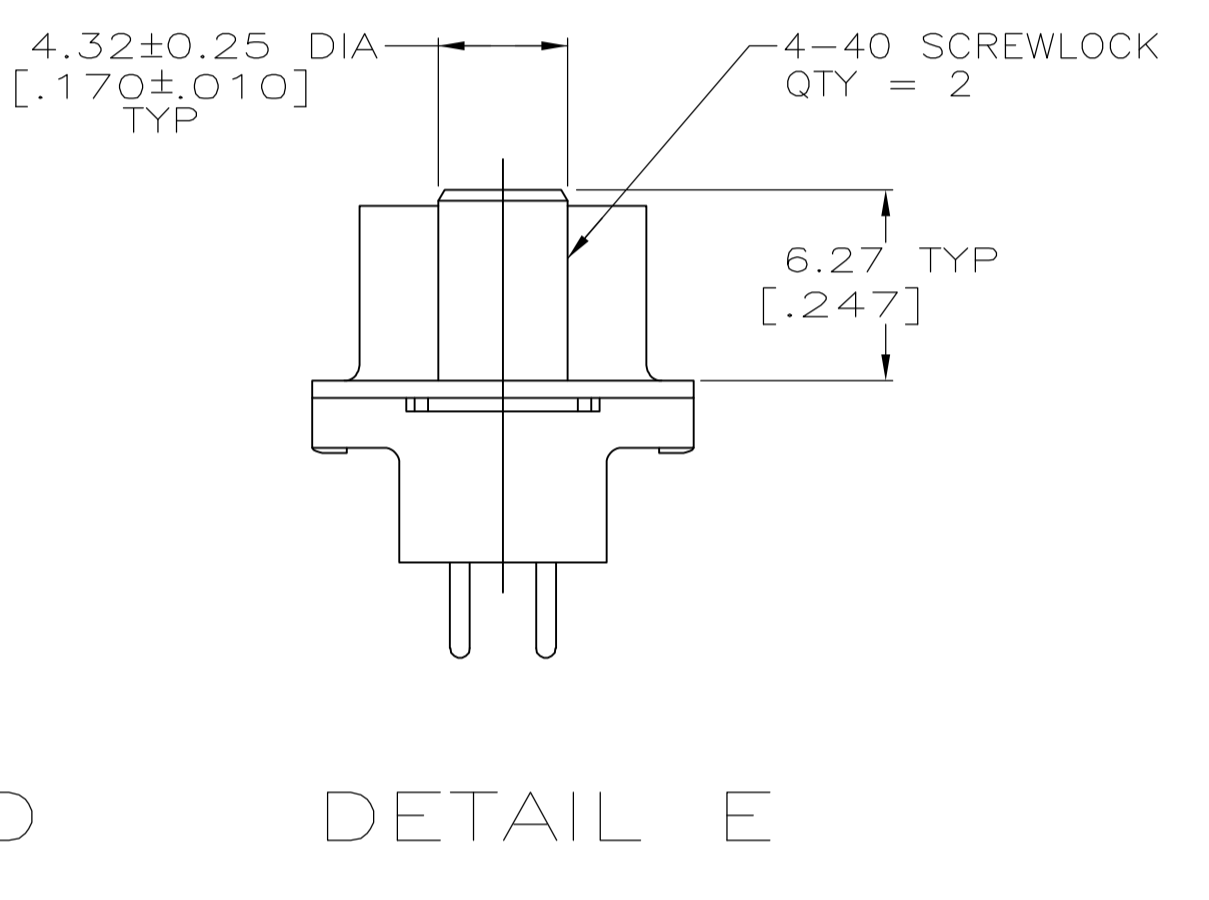
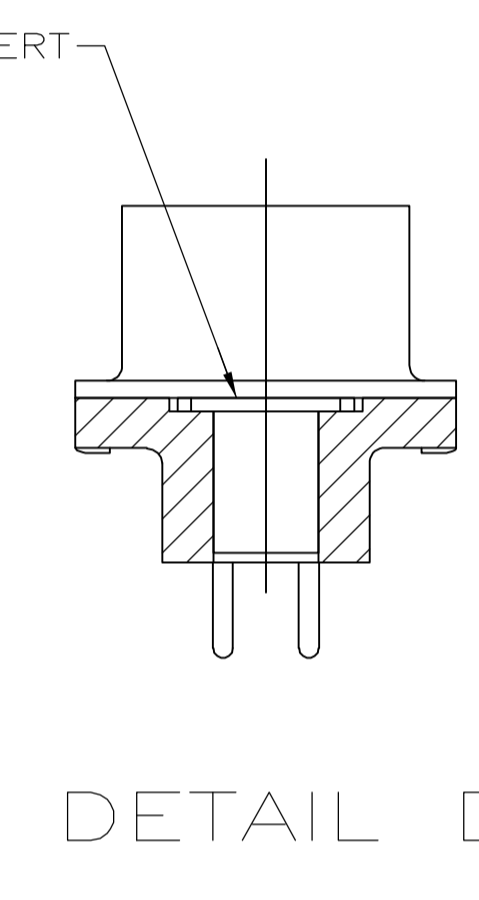
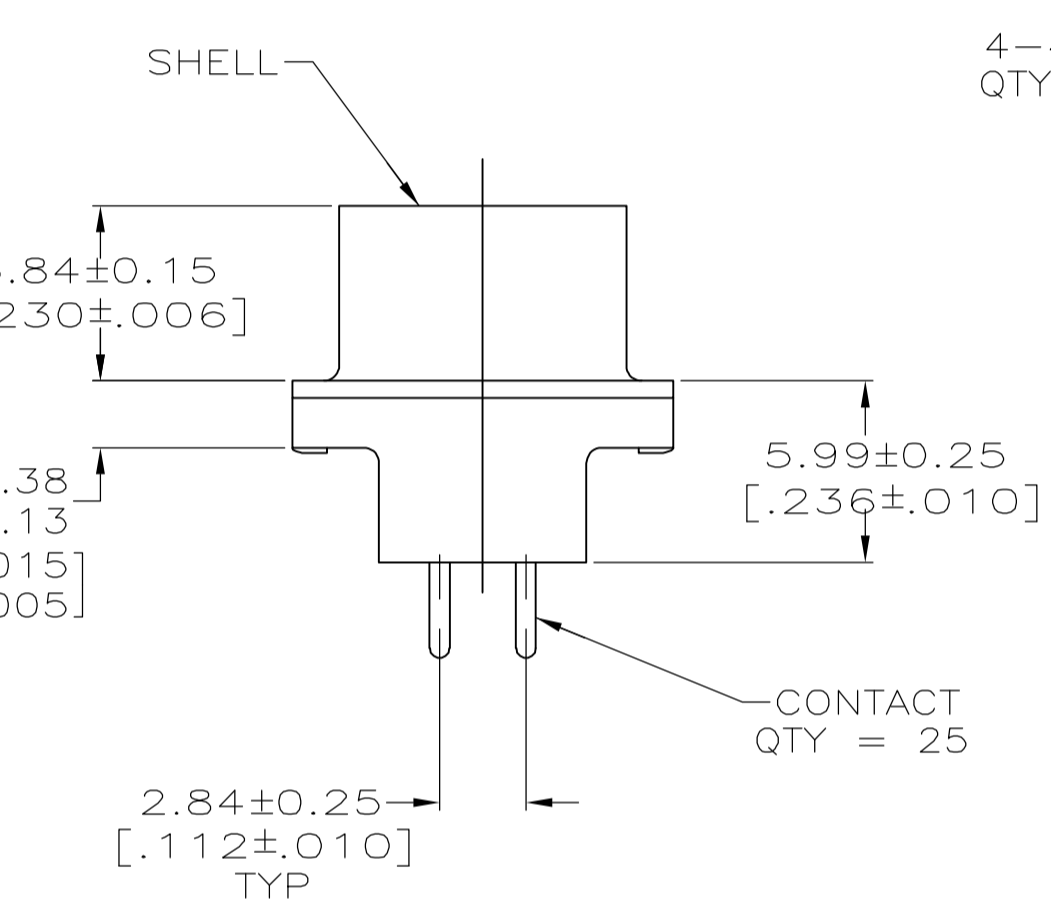
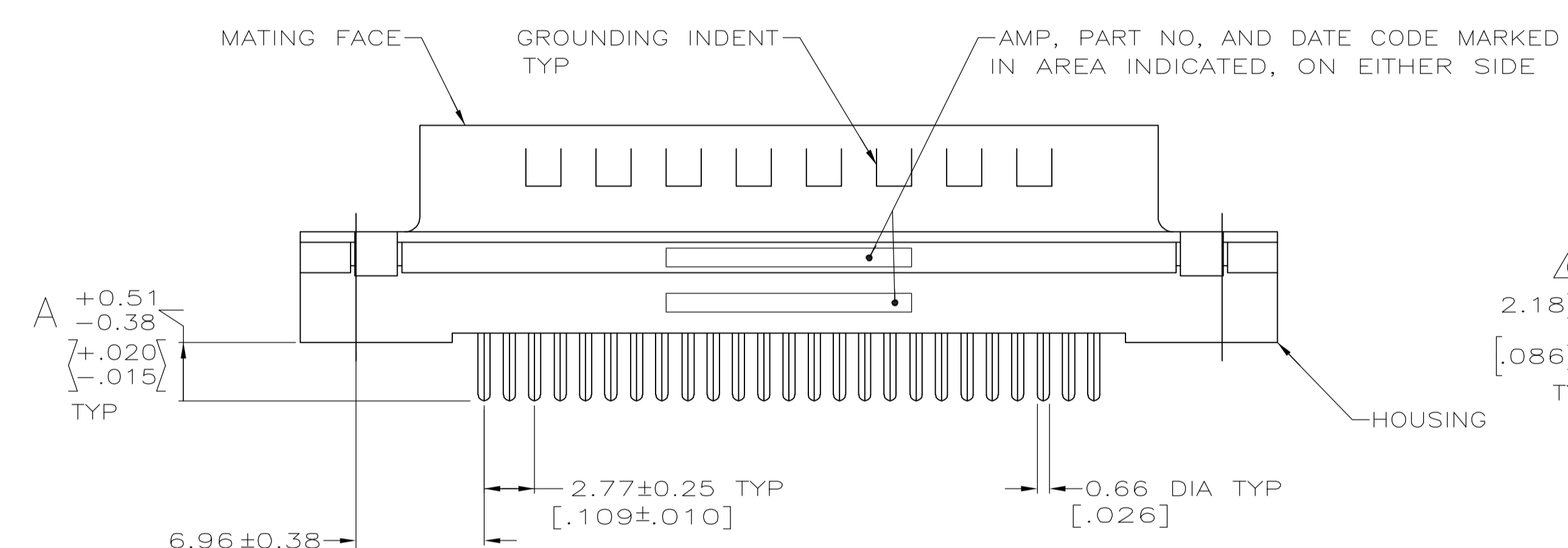
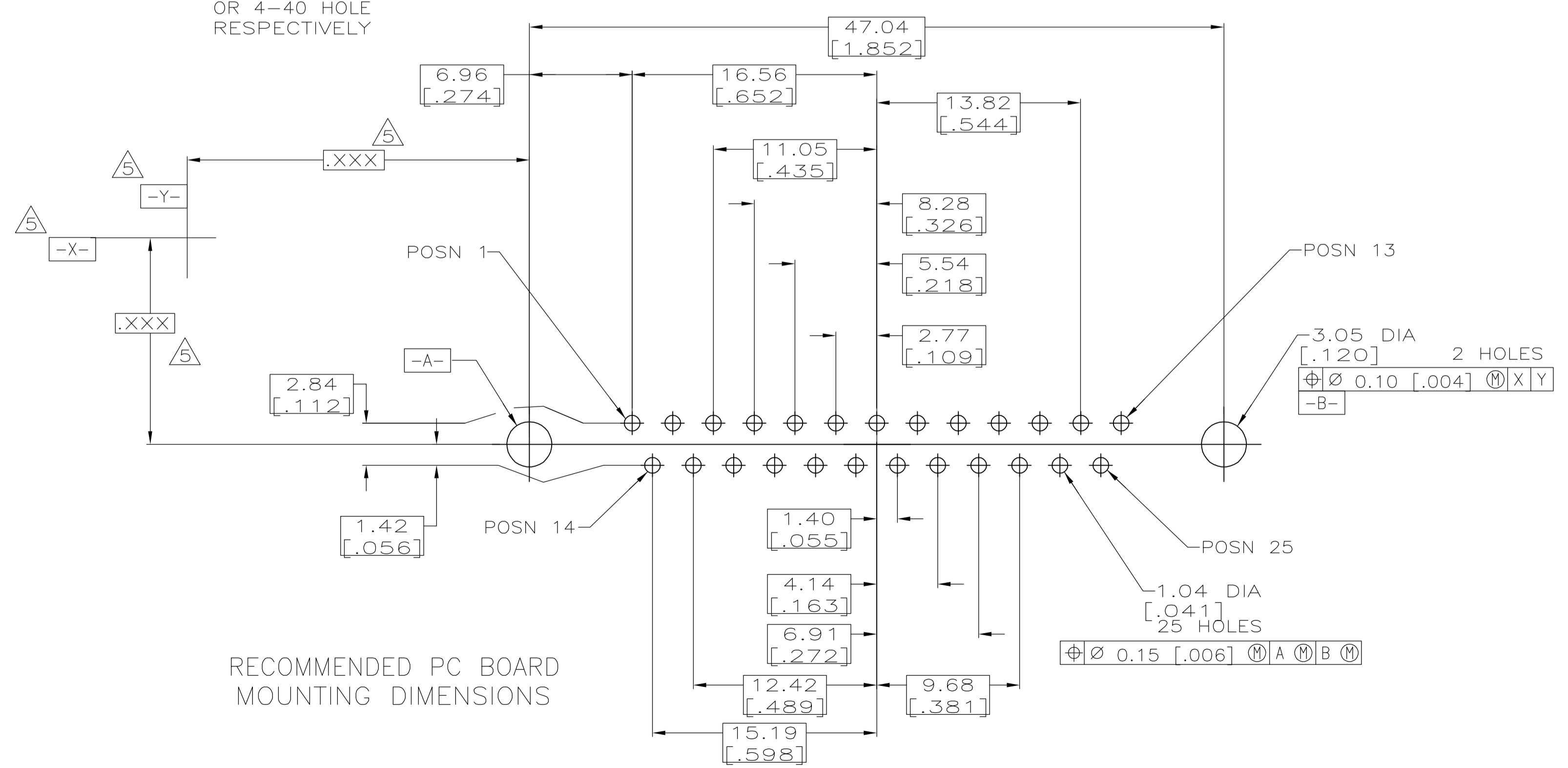


- 1 HOUSING: BLACK POLYESTER, UL 94V-0 RATED;
 CONTACTS: BRASS
 SHELLS: CARBON STEEL
 SCREWLOCK: ZINC
 INSERTS: BRASS
- 2 GOLD PLATED FOR LENGTH OF 3.81 [.150] MIN FROM MATING END, GOLD FLASH IN MATED AREA, 2.54μm [.000100] MIN TIN OR TIN-LEAD FOR A LENGTH OF DIMENSION A FROM OPPOSITE END, BOTH OVER 1.27μm [.000050] MIN NICKEL.
- 3 GOLD PLATED FOR LENGTH OF 3.81 [.150] MIN FROM MATING END, 0.76μm [.000030] MIN GOLD IN MATED AREA, 2.54μm [.000100] MIN TIN OR TIN-LEAD FOR A LENGTH OF DIMENSION A FROM OPPOSITE END, BOTH OVER 1.27μm [.000050] MIN NICKEL.
 -OR-
 GOLD FLASH OVER PALLADIUM NICKEL PLATED FOR A LENGTH OF 3.81 [.150] MIN FROM MATING END, 0.76μm [.000030] MIN GOLD IN MATED AREA, 2.54μm [.000100] MIN TIN OR TIN-LEAD FOR A LENGTH OF DIMENSION A FROM OPPOSITE END, BOTH OVER 1.27μm [.000050] MIN NICKEL.
- 4 SHELLS: 5.08μm [.000200] MIN TIN OVER 1.27μm [.000050] MIN COPPER
 CONTACTS: SEE TABLE.
- 5 DATUMS AND BASIC DIMENSIONS ESTABLISHED BY CUSTOMER.
- 6 2.79[.110] MAX IN SHELL TAB CLINCH AREAS.



DETAIL D

DETAIL E



RECOMMENDED PC BOARD MOUNTING DIMENSIONS

OBSOLETE	6.35	[.250]	4-40 SCREWLOCK (DETAIL E)	3	1-745968-8
OBSOLETE	6.35	[.250]	4-40 SCREWLOCK (DETAIL E)	2	1-745968-7
OBSOLETE	4.32	[.170]	4-40 SCREWLOCK (DETAIL E)	3	1-745968-6
OBSOLETE	4.32	[.170]	4-40 SCREWLOCK (DETAIL E)	2	1-745968-5
	3.18	[.125]	4-40 SCREWLOCK (DETAIL E)	3	1-745968-4
OBSOLETE	3.18	[.125]	4-40 SCREWLOCK (DETAIL E)	2	1-745968-3
	6.35	[.250]	4-40 INSERT (DETAIL D)	3	1-745968-2
OBSOLETE	6.35	[.250]	4-40 INSERT (DETAIL D)	2	1-745968-1
	4.32	[.170]	4-40 INSERT (DETAIL D)	4	1-745968-0
	4.32	[.170]	4-40 INSERT (DETAIL D)	2	745968-9
	3.18	[.125]	4-40 INSERT (DETAIL D)	3	745968-8
	3.18	[.125]	4-40 INSERT (DETAIL D)	2	745968-7
OBSOLETE	6.35	[.250]	-	3	745968-6
	6.35	[.250]	-	2	745968-5
	4.32	[.170]	-	3	745968-4
SUPERSEDED BY 745968-4	4.32	[.170]	-	2	745968-3
	3.18	[.125]	-	3	745968-2
SUPERSEDED BY 745968-2	3.18	[.125]	-	2	745968-1

SUPERSEDED BY 745968-4
 SUPERSEDED BY 745968-2

THIS DRAWING IS A CONTROLLED DOCUMENT.		DIN J. McCLINTON 12/01/89		Tyco Electronics Corporation	
DIMENSIONS: mm [INCHES]		TOLERANCES UNLESS OTHERWISE SPECIFIED:		Tyco Electronics Corporation Harrisburg, PA 17105-3608	
0 PLC ± -	1 PLC ± -	2 PLC ± 0.13 [.005]	3 PLC ± -	4 PLC ± -	ANGLES ± -
MATERIAL		FINISH		CUSTOMER DRAWING	
APPROVED: R. STONE 02/01/90		NAME: C. ROHDE 2-02-90		SIZE: A1	
PRODUCT SPEC: 108-40025		APPLICATION SPEC: 114-40023		SCALE: 4:1	
WEIGHT: -		DRAWING NO: 00779		SHEET 1 OF 1	
REV: -		PART NO: 745968		REV: N	