

747238-4 Product Details

[Share](#) [Print](#) [Email](#)



747238-4

TE Internal Number: 747238-4

 Active

[View 3D PDF](#)

Standard Board Mount Connectors

Not EU RoHS or ELV Compliant (Find RoHS Compliant Alternates)

Product Highlights:

- 25 Positions
- Connector Style = Plug
- PCB Mounting Orientation = Right Angle
- Product Series = HD 20
- With Mating Connector Lock

[View all Features](#)

Quick Links

- ▶ [Pricing & Availability](#)
- ▶ [Search for Tooling](#)
- ▶ [View Mating Products \(9\)](#)
- ▶ [Product Feature Selector](#)
- ▶ [Contact Us About This Product](#)

[Add to My Part List](#)

[Request Sample](#)

[Find Similar Products](#)

[Buy Product](#)

Documentation & Additional Information

Product Drawings:

- [PLUG ASSEMBLY, SIZE 3, 25 POSITION, RIGHT ANGLE, FRO...](#) (PDF, English)

Catalog Pages/Data Sheets:

- None Available

Product Specifications:

- [AMPLIMITE HD-20 PCB Mounted Connector](#) (PDF, English)

Application Specifications:

- [AMPLIMITE Right-Angle Front Metal Shell Connectors](#) (PDF, English)

Instruction Sheets:

- None Available

CAD Files: (CAD Format & Compression Information)

- [2D Drawing](#) (DXF, Version Y)
- [3D Model](#) (IGES, Version Y)
- [3D Model](#) (STEP, Version Y)

[List all Documents](#)

Additional Information:

- [Product Line Information](#)

Related Products:

- [Tooling](#)
- [Mating Products \(9\)](#)

Product Features (Please use the Product Drawing for all design activity)

Product Type Features:

- [PCB Mounting Orientation](#) = Right Angle
- [Product Series](#) = HD 20
- [Mating Connector Lock](#) = With
- [Mating Connector Lock Type](#) = Threaded Insert, 4-40 UNC
- [PCB Mount Retention](#) = With
- [PCB Mount Retention Type](#) = Mounting Hole(s)
- [Shell Type](#) = Front Metal Shell
- [Shell Size](#) = 3
- [Footprint \(mm \[in\]\)](#) = 8.08 [.318]
- [Grounding Indents](#) = With
- [Grounding Straps](#) = With
- [PCB Mount Style](#) = Through Hole
- [Color Code](#) = None
- Sealed = No
- Profile = Standard
- Post Size (mm [in]) = 0.66 [.026]

Body Features:

- Shell Material = Steel
- Shell Plating = Tin
- Threaded Insert Material = Zinc
- Threaded Insert Plating = Clear Chromate
- Eyelet Plating = Tin

Contact Features:

- [Contact Plating, Mating Area, Material](#) = Gold (30), Gold Flash over Palladium Nickel
- [Solder Tail Contact Plating](#) = Tin-Lead over Nickel
- Contact Shape = Round
- Contact Base Material = Brass

Housing Features:

- Connector Style = Plug
- Housing Material = Thermoplastic - GF

- Mounting Hole Diameter (mm [in]) = 3.18 [.125]
- Eyelet Material = Brass

Mechanical Attachment:

- Panel Mount Retention = Without

Termination Features:

- Grounding Clips = Without
- Termination Post Length (mm [in]) = 3.18 [0.125]

Dimensions:

- PCB Thickness, Recommended (in [mm]) = 0.093 [2.36]

Configuration Features:

- Number of Positions = 25

Industry Standards:

- RoHS/ELV Compliance = Not ELV/RoHS compliant
- Lead Free Solder Processes = Wave solder capable to 260°C, Wave solder capable to 240°C, Wave solder capable to 265°C
- UL Flammability Rating = UL 94V-0

Other:

- Brand = AMP
- Comment = Plugs are preloaded with size 20 DF posted pin contacts

Corporate Information

- [About TE](#)
- [Investors](#)
- [News Room](#)
- [Supplier Portal](#)
- [Careers](#)
- [Terms & Conditions](#)
- [Privacy Policy](#)
- [AODA Accessibility Policy](#)
- [AODA Multi-Year Accessibility Plan](#)

Quick Links

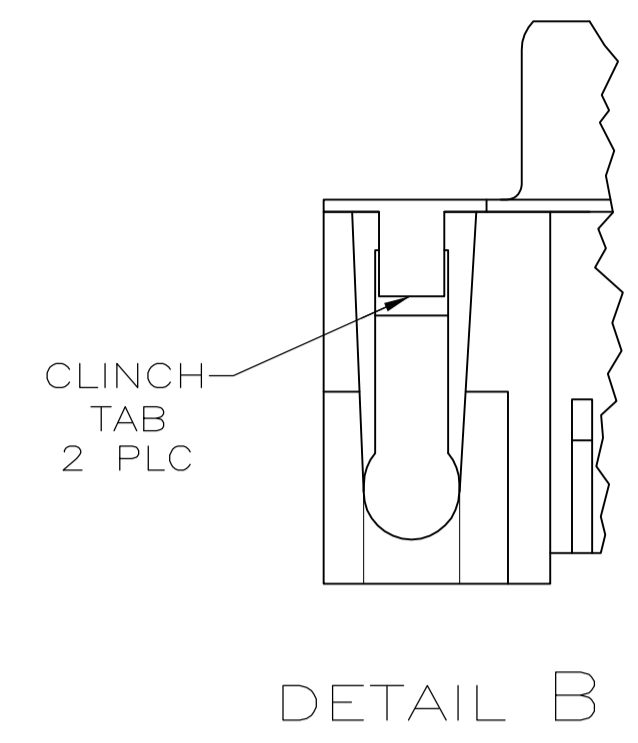
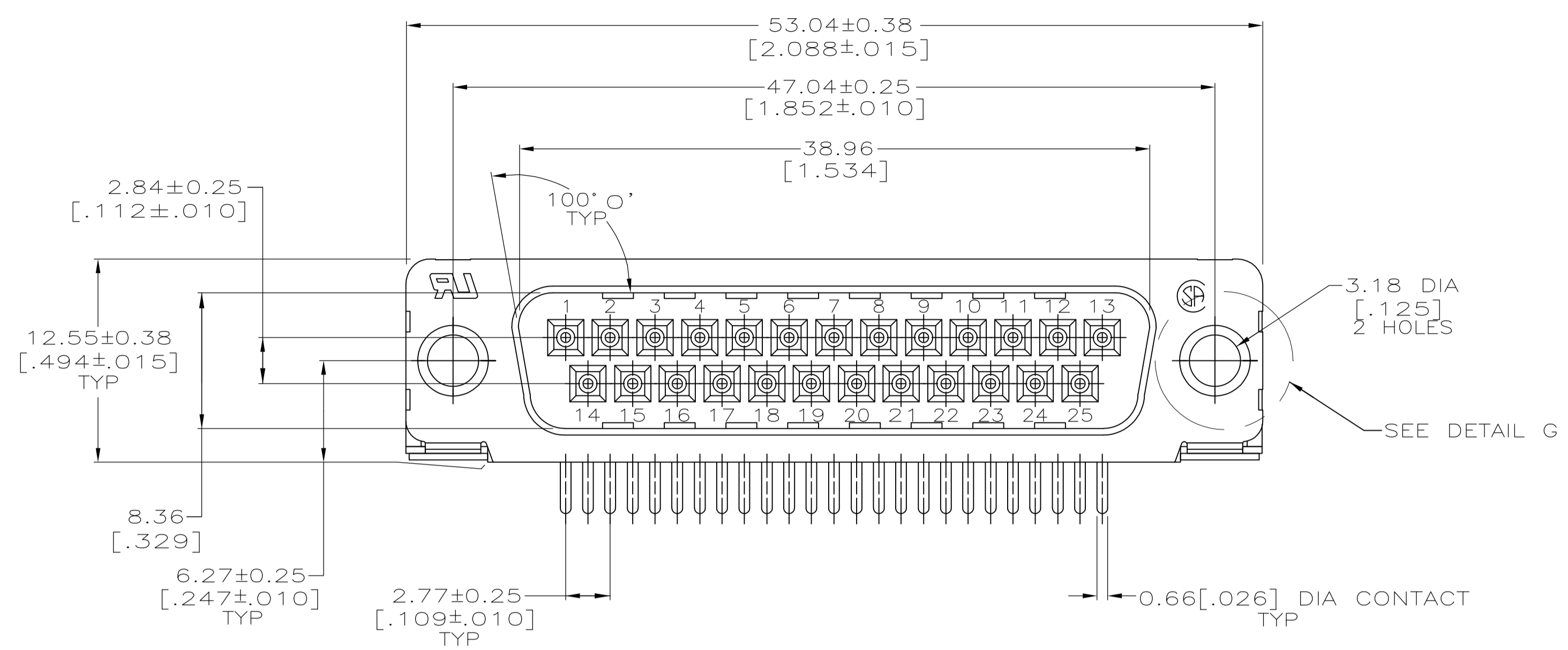
- [Distributor Inventory](#)
- [Product Cross Reference](#)
- [Documents & Drawings](#)
- [Product Compliance Support Center](#)
- [Site Map](#)

Customer Support

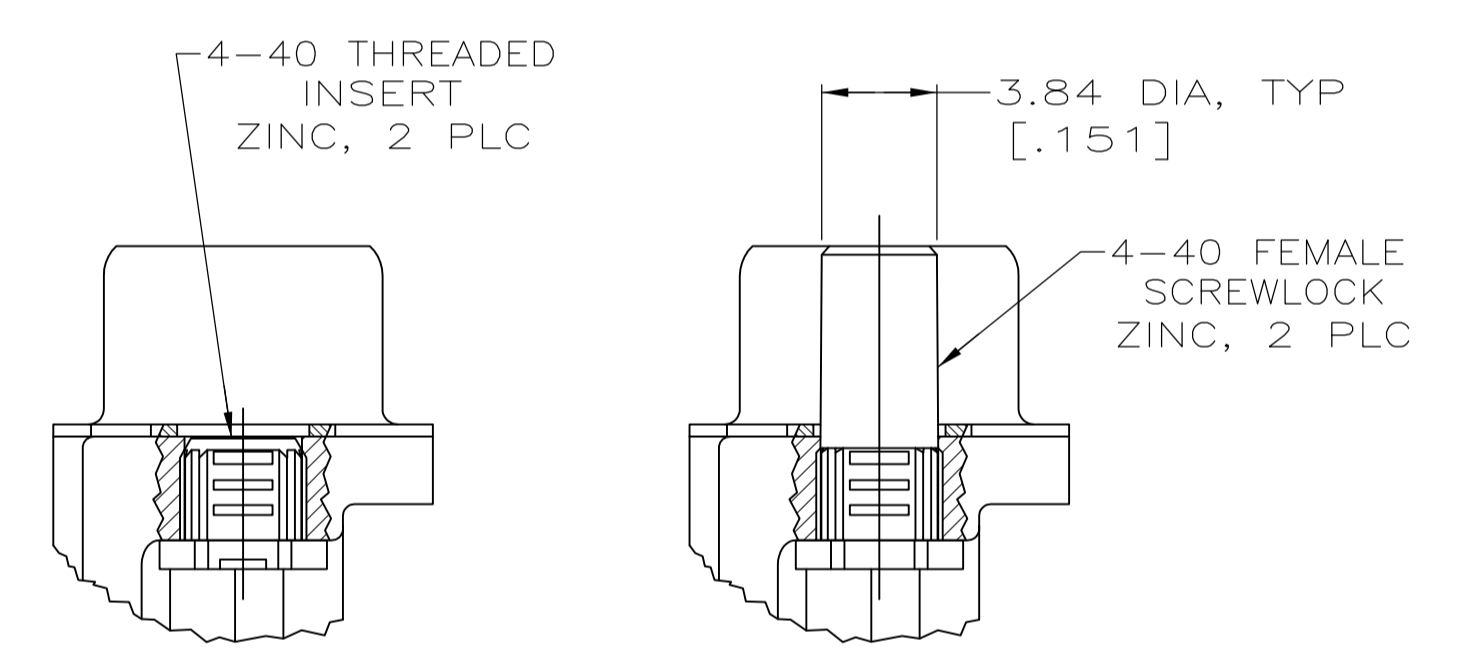
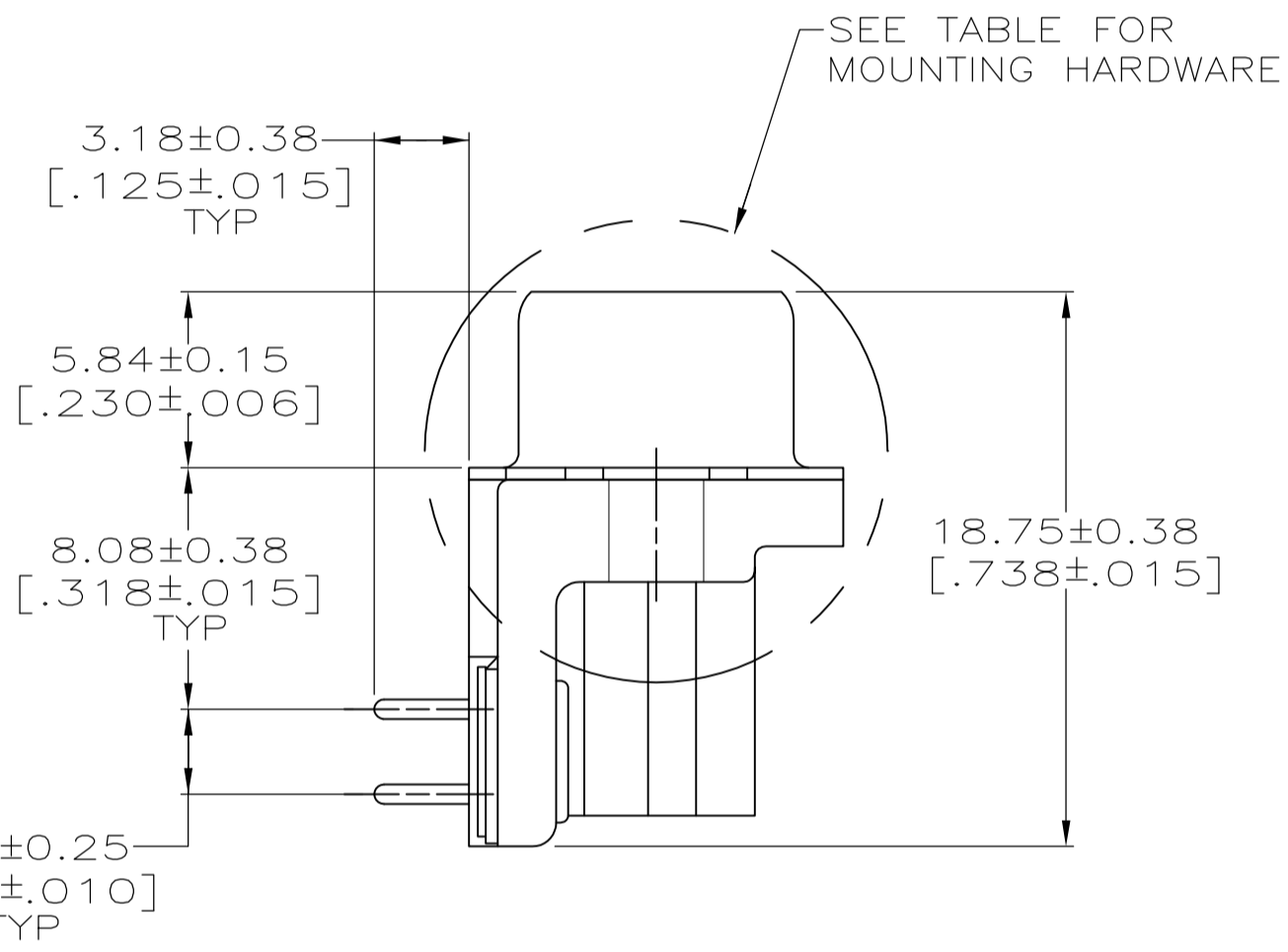
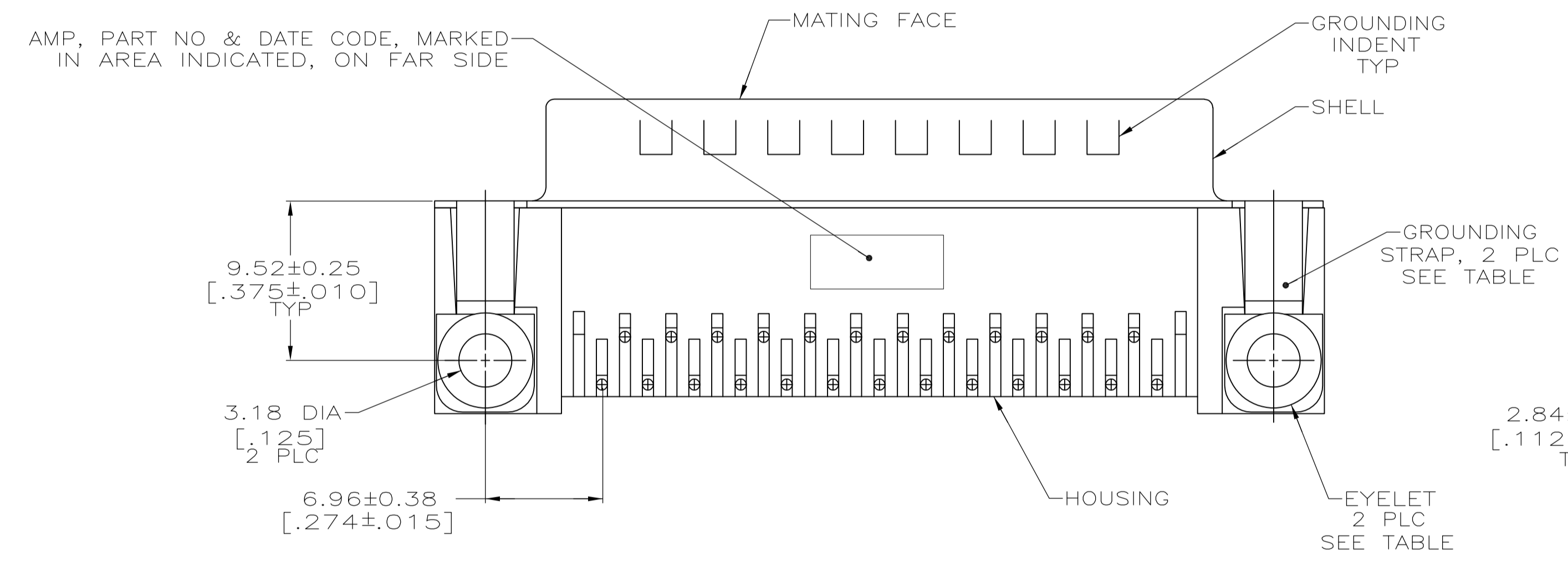
- [Email or Chat With Us](#)
- [Find a Phone Number](#)
- [Knowledge Base](#)
- [Manage Your Account](#)

Keep Me Informed

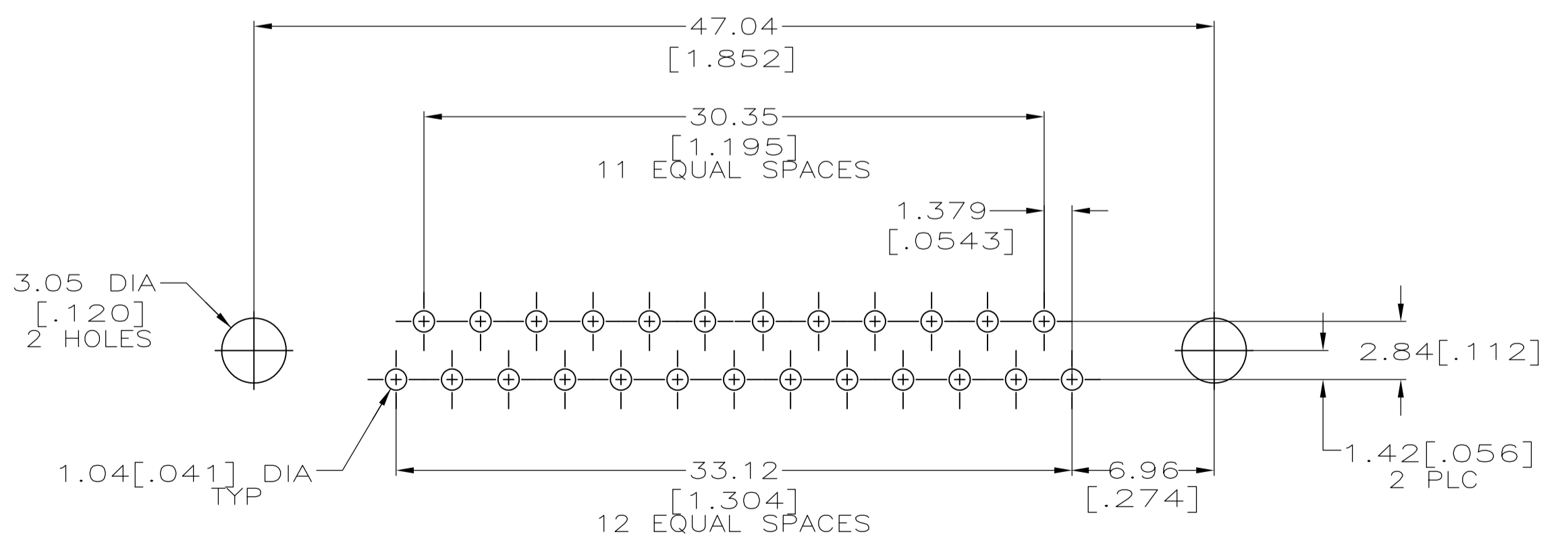




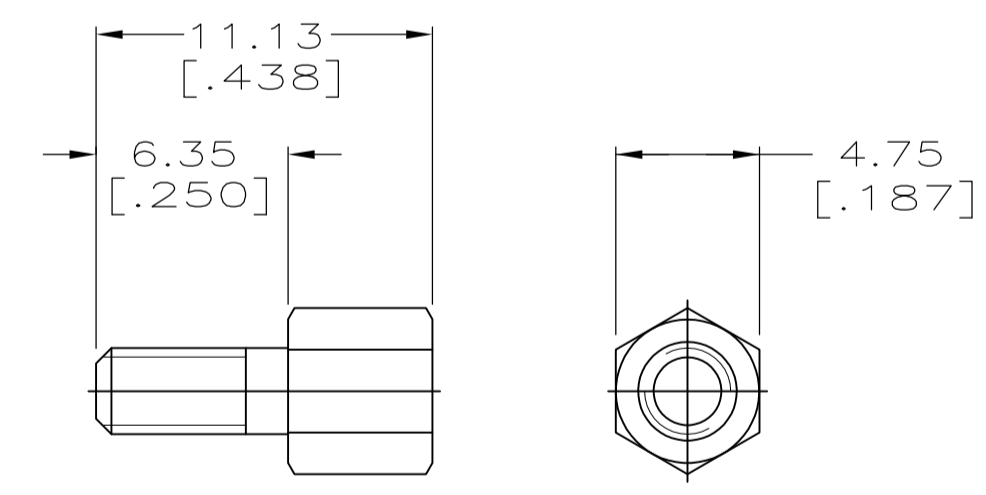
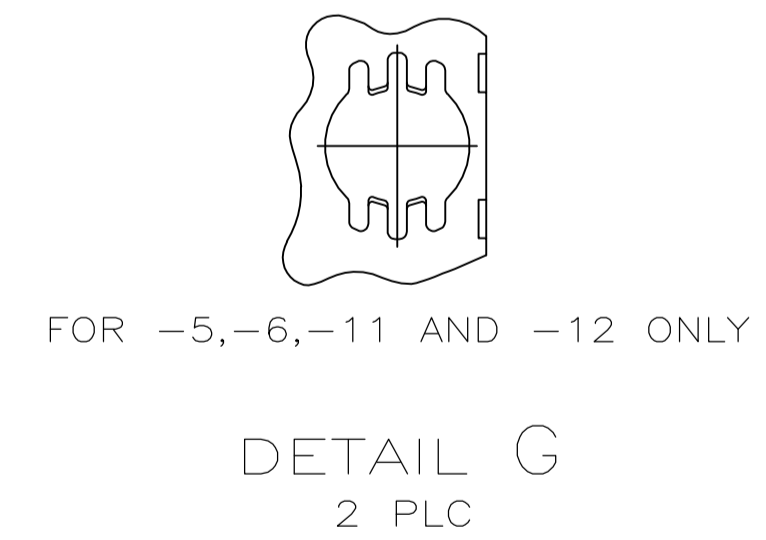
- 1 HOUSING: BLACK NYLON OR POLYESTER, FLAME RETARDANT, UL 94V-0 RATED, GLASS FILLED
 CONTACTS: BRASS
 SHELLS: CARBON STEEL
 EYELETS: BRASS
- 2 GOLD FLASH ON THE MATING SURFACES, 2.54µm[.000100] MIN TIN OR TIN-LEAD PLATE ON THE SOLDER END, 1.27µm[.000050] MIN NICKEL UNDERPLATE ON THE ENTIRE CONTACT.
- 3 0.76µm[.000030] MIN GOLD PLATE ON THE MATING SURFACES, 2.54µm[.000100] MIN TIN OR TIN-LEAD PLATE ON THE SOLDER END, 1.27µm[.000050] MIN NICKEL UNDERPLATE ON THE ENTIRE CONTACT
 -OR-
 GOLD FLASH OVER PALLADIUM-NICKEL PLATE, 0.76µm[.000030] MIN TOTAL ON THE MATING SURFACES, 2.54µm[.000100] MIN TIN OR TIN-LEAD PLATE ON THE SOLDER END, 1.27µm[.000050] MIN NICKEL UNDERPLATE ON THE ENTIRE CONTACT.
- 4 SHELLS: 2.54µm[.000100] MIN TIN OVER 1.27µm[.000050] MIN COPPER.
 EYELETS: 5.08µm[.000200] MIN TIN OVER COPPER FLASH.
 CONTACTS: SEE TABLE.
 SCREWLOCKS AND INSERTS: CLEAR CHROMATE.
- 5 SCREWLOCKS FOR 1-747238-3 ASSEMBLY WILL BE BULK PACKED AND SHIPPED WITH ASSEMBLIES.
- 6 OBSOLETE PART NUMBER.
- 7 SUPERSEDED BY 1-747238-2.
- 8 SUPERSEDED BY 747238-6.
- 9 SUPERSEDED BY 747238-3.



DETAIL D DETAIL E



RECOMMENDED P.C. BOARD MOUNTING DIMENSIONS



DETAIL F
 2 PLC

GROUNDING STRAPS	EYELETS	MOUNTING HARDWARE	CONTACT FINISH	PART NUMBER
NO SEE DETAIL B	NO	SEE DETAILS D AND F	1	1-747238-3
		SEE DETAIL E	2	1-747238-2
		SEE DETAIL D	3	1-747238-1
		-	4	1-747238-0
YES YES	YES	-	5	747238-9
		-	6	747238-8
		-	7	747238-7
		SEE DETAIL E	8	747238-6
		SEE DETAIL D	9	747238-5
-	-	-	10	747238-4
		-	11	747238-3
		-	12	747238-2
-	-	-	13	747238-1

THIS DRAWING IS A CONTROLLED DOCUMENT. DIMENSIONING AND TOLERANCING PER ASME Y14.5M-2009

DIMENSIONS: mm [INCHES]	TOLERANCES UNLESS OTHERWISE SPECIFIED:	DIN W.G. LENKER 07-NOV-89	TE Connectivity
0 PLC ± -	1 PLC ± -	CHK R. STONE 05-FEB-90	
2 PLC ± -	3 PLC ± 0.13[.005]	APVD M.D. GALLOWAY 06-FEB-90	NAME
4 PLC ± -	ANGLES ± 2°		
MATERIAL	FINISH	APPLICATION SPEC 108-40025	PRODUCT SPEC
		SIZE 114-40010	RESTRICTED TO
		WEIGHT	SCALE 4:1 SHEET 1 OF 1 REV AA
		CUSTOMER DRAWING	

PLUG ASSEMBLY, SIZE 3, 25 POSITION, RIGHT ANGLE, FRONT METAL SHELL, .318 SERIES, AMPLIMITE® HD-20

00779 ©=747238