

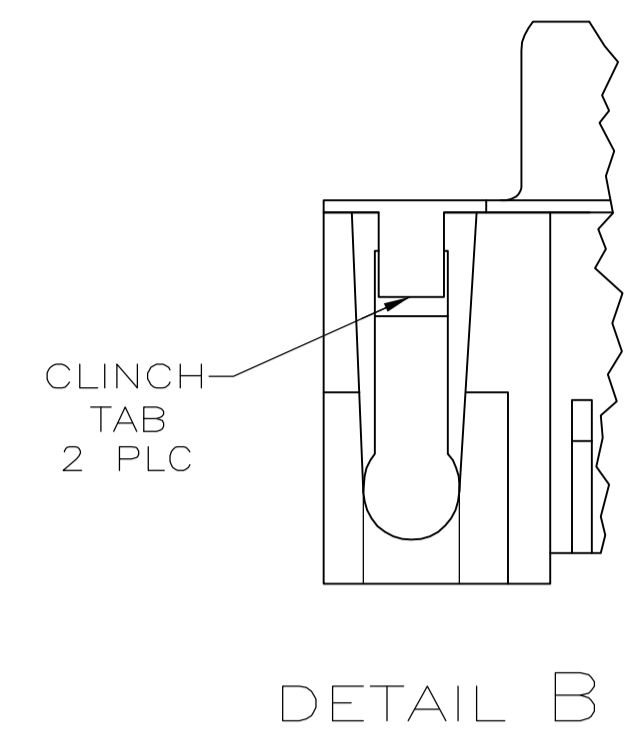
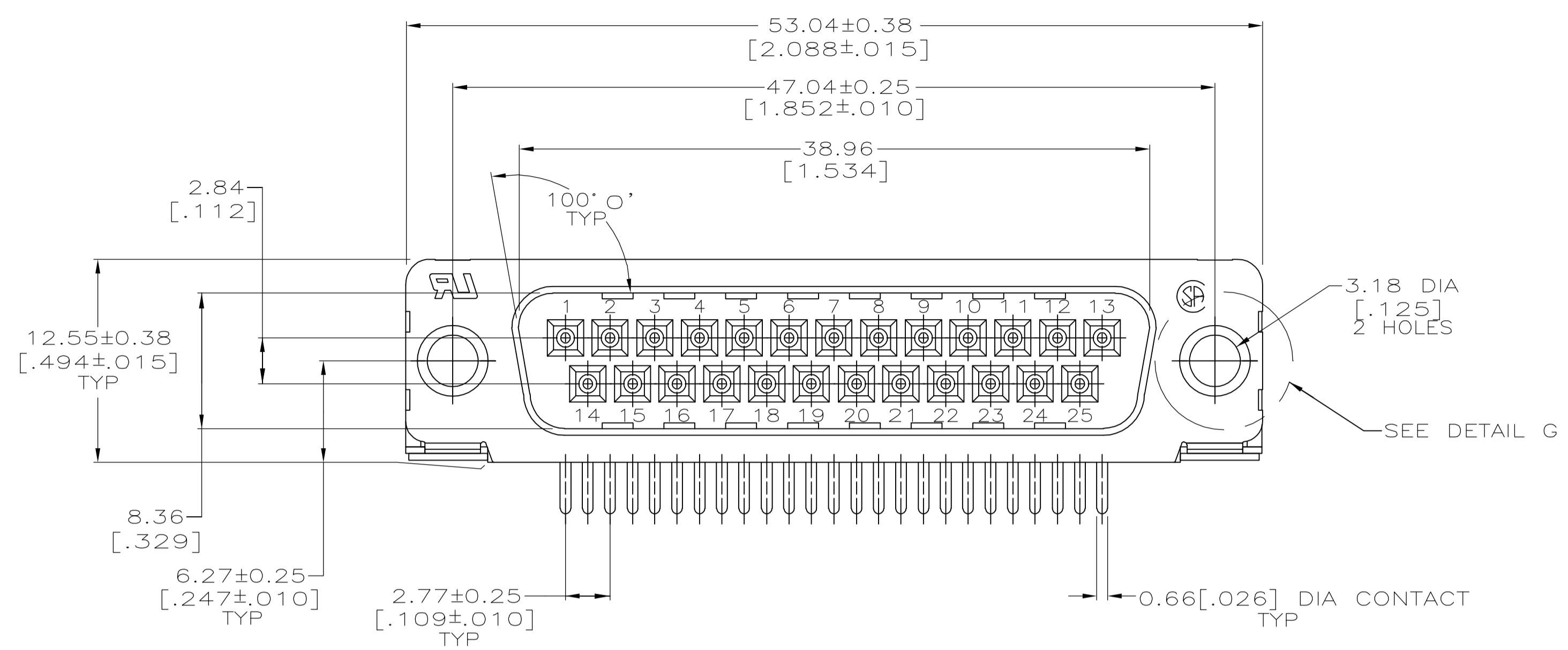
Distributed by:

**JAMECO**<sup>®</sup>  
ELECTRONICS

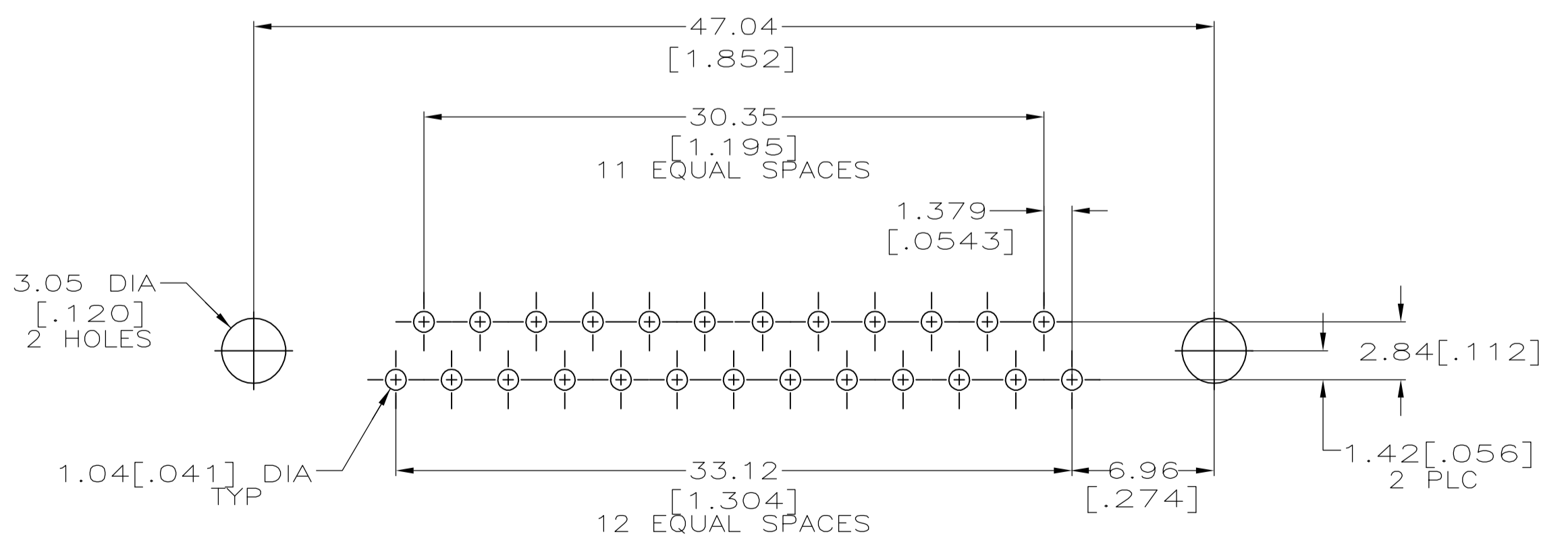
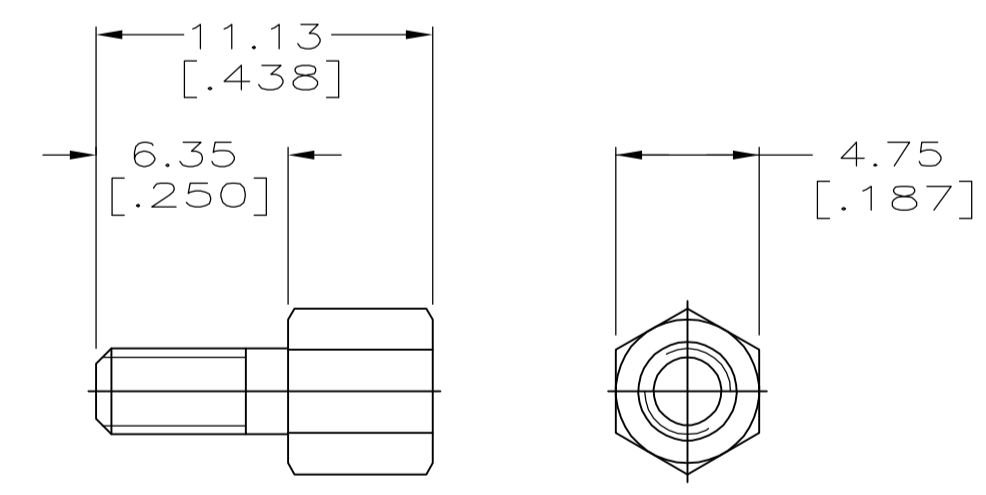
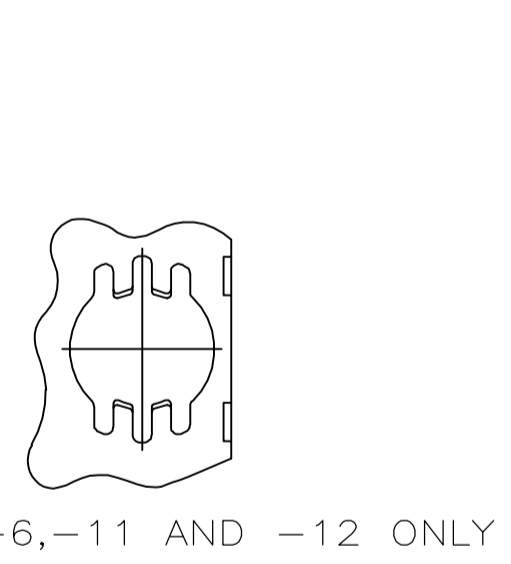
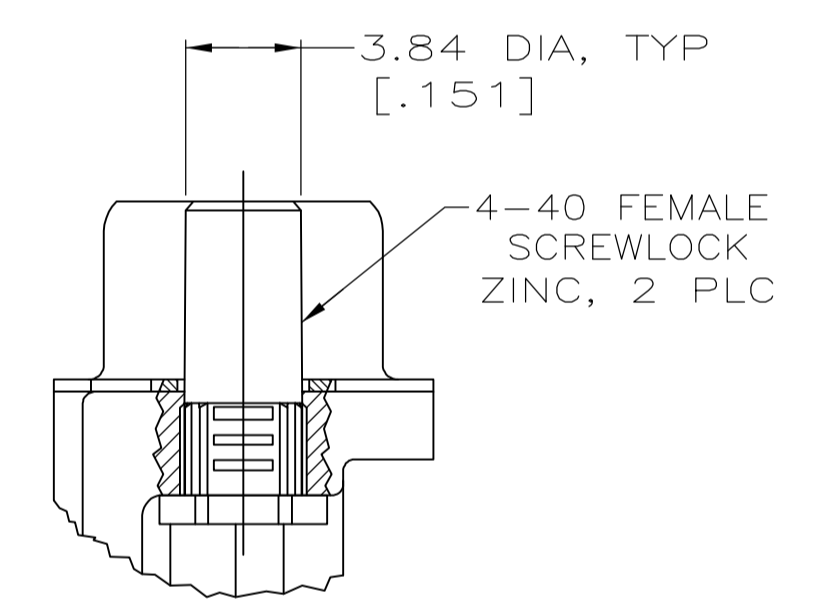
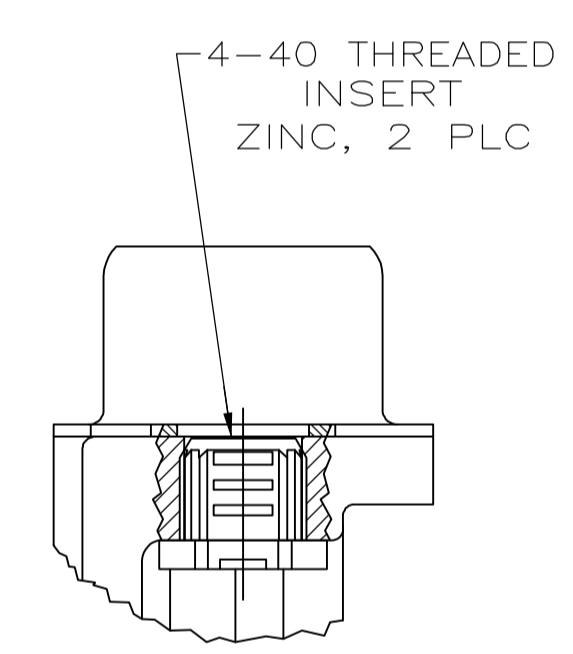
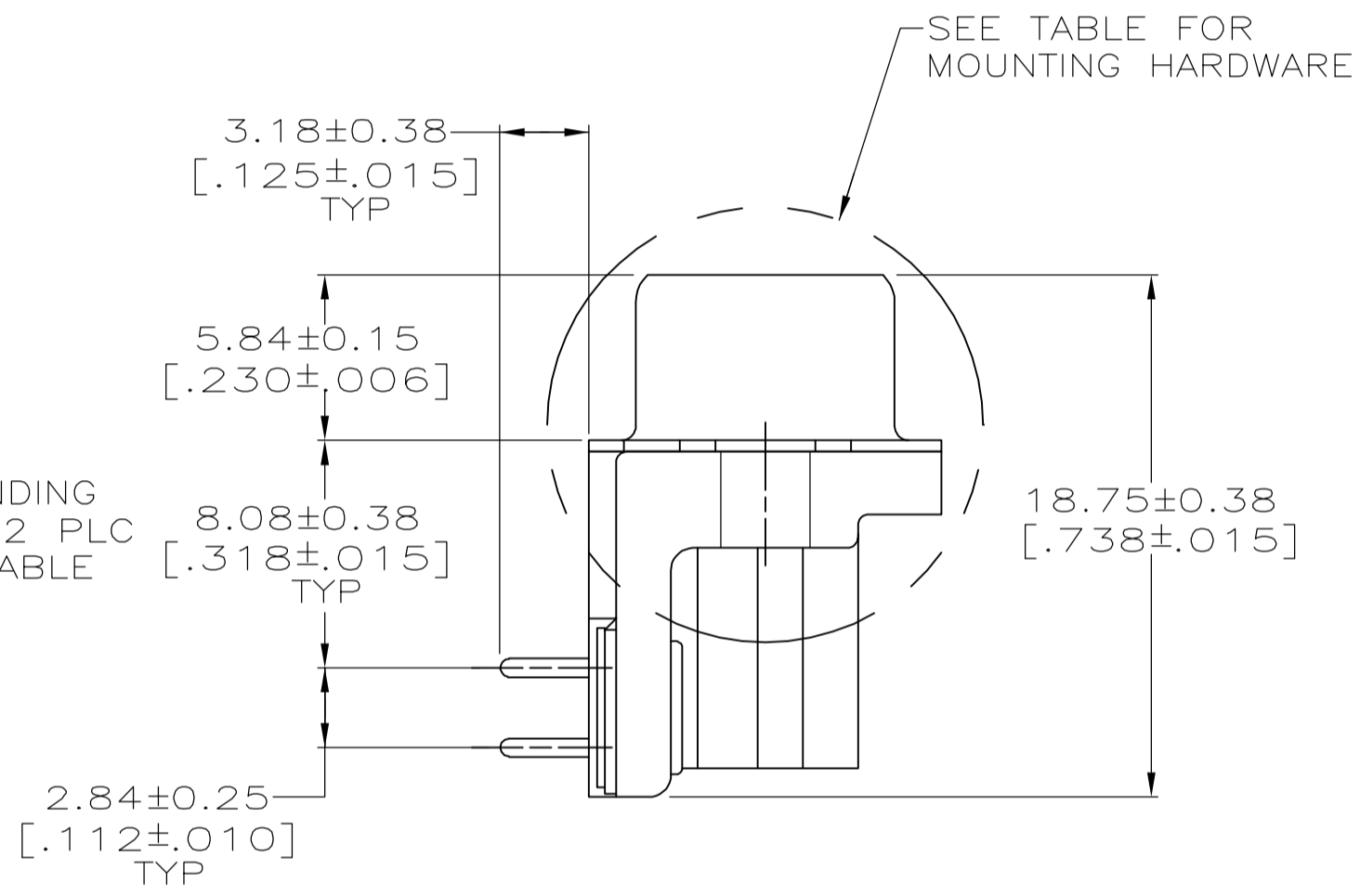
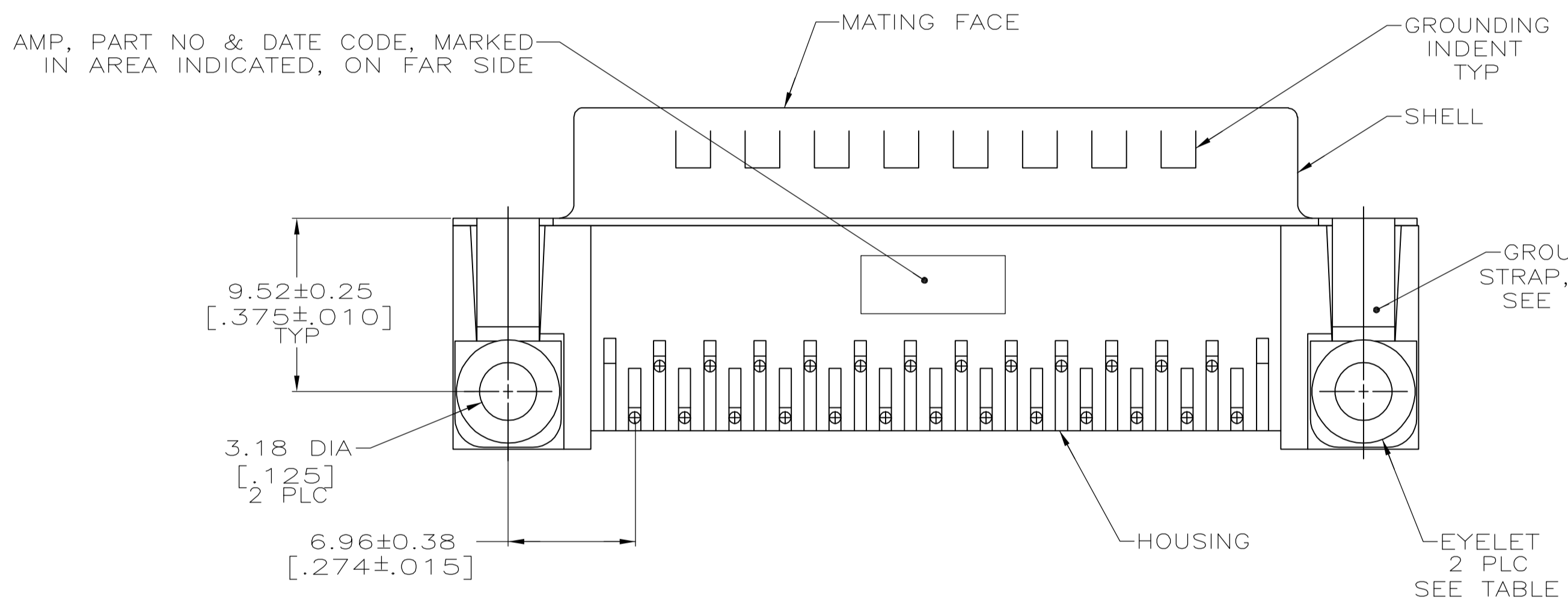
**www.Jameco.com ♦ 1-800-831-4242**

The content and copyrights of the attached  
material are the property of its owner.

Jameco Part Number 614230



- ① HOUSING: BLACK NYLON OR POLYESTER, FLAME RETARDANT, UL 94V-0 RATED, GLASS FILLED  
 CONTACTS: BRASS  
 SHELLS: CARBON STEEL  
 EYELETS: BRASS
- ② GOLD PLATING FOR LENGTH OF 3.81 [.150] MIN FROM MATING END, GOLD FLASH IN MATED AREA, 2.54µm [.000100] MIN TIN OR TIN-LEAD FOR A LENGTH OF 3.56 [.140] MIN FROM OPPOSITE END, BOTH OVER 1.27µm [.000050] MIN NICKEL.
- ③ GOLD PLATED FOR LENGTH OF 3.81 [.150] MIN FROM MATING END, 0.76µm [.000030] MIN GOLD IN MATED AREA, 2.54µm [.000100] MIN TIN OR TIN-LEAD FOR A LENGTH OF 3.56 [.140] MIN FROM OPPOSITE END, BOTH OVER 1.27µm [.000050] MIN NICKEL.  
 -OR-  
 GOLD FLASH OVER MIN PALLADIUM NICKEL FOR A LENGTH OF 3.81 [.150] MIN FROM MATING END, 0.76µm [.000030] PALLADIUM NICKEL IN MATED AREA, 2.54µm [.000100] MIN TIN OR TIN-LEAD FOR A LENGTH OF 3.56 [.140] FROM OPPOSITE END, BOTH OVER 1.27µm [.000050] MIN NICKEL.
- ④ SHELLS: 2.54µm [.000100] MIN TIN OVER 1.27µm [.000050] MIN COPPER  
 EYELETS: 5.08µm [.000200] MIN TIN OVER COPPER FLASH  
 CONTACTS: SEE TABLE  
 SCREWLOCKS AND INSERTS: CLEAR CHROMATE
- ⑤ SCREWLOCKS FOR 1-747238-3 ASSEMBLY WILL BE BULK PACKED AND SHIPPED WITH ASSEMBLIES.
- ⑥ OBSOLETE PART NUMBER.
- ⑦ SUPERSEDED BY 1-747238-2.
- ⑧ SUPERSEDED BY 747238-6.
- ⑨ SUPERSEDED BY 747238-3.



NO	NO	SEE DETAILS D AND F	①	1-747238-3
NO	NO	SEE DETAIL E	②	1-747238-2
		SEE DETAIL D	③	1-747238-1
		-	④	1-747238-0
		-	⑤	747238-9
YES	YES	-	⑥	747238-8
		SEE DETAIL E	⑦	747238-7
		SEE DETAIL D	⑧	747238-6
		-	⑨	747238-5
		-	⑩	747238-4
GROUNDING STRAPS	EYELETS	MOUNTING HARDWARE	⑪	747238-3
			⑫	747238-2
			⑬	747238-1

THIS DRAWING IS A CONTROLLED DOCUMENT.

DIMENSIONS: mm [INCHES]	TOLERANCES UNLESS OTHERWISE SPECIFIED:	DIN W.G. LENKER 07-NOV-89	tyco Electronics Tyco Electronics Corporation Harrisburg, PA 17105-3608
0 PLC ± -	1 PLC ± -	CHK R. STONE 05-FEB-90	NAME M.D. GALLOWAY
2 PLC ± -	3 PLC ± 0.13[.005]	APVD W.D. GALLOWAY 06-FEB-90	PRODUCT SPEC 108-40025
4 PLC ± -	ANGLES ± 2°	APPLICATION SPEC 114-40010	SIZE 108-40025
MATERIAL	FINISH	WEIGHT	SCALE 4:1 SHEET 1 OF 1 REV Y

CUSTOMER DRAWING