



**Have a Question?**  
Chat with a Product Information Specialist

What can we help you find?

**747252-4 Product Details**

[Share](#) [Print](#) [Email](#)



**747252-4**

TE Internal Number: 747252-4

Active

**Standard Board Mount Connectors**

Not EU RoHS or ELV Compliant (Find RoHS Compliant Alternates)

**Product Highlights:**

- 37 Positions
- Connector Style = Plug
- PCB Mounting Orientation = Right Angle
- Product Series = HD 20
- With Mating Connector Lock

[View all Features](#)

**Quick Links**

- ▶ [Pricing & Availability](#)
- ▶ [Search for Tooling](#)
- ▶ [View Mating Products \(4\)](#)
- ▶ [Product Feature Selector](#)
- ▶ [Contact Us About This Product](#)

[View 3D PDF](#)

[Add to My Part List](#)

[Request Sample](#)

[Find Similar Products](#)

[Buy Product](#)

**Documentation & Additional Information**

**Product Drawings:**

- [PLUG ASSEMBLY, SIZE 4, 37 POSITION, RIGHT ANGLE, FRO...](#) (PDF, English)

**Catalog Pages/Data Sheets:**

- None Available

**Product Specifications:**

- [AMPLIMITE HD-20 PCB Mounted Connector](#) (PDF, English)

**Application Specifications:**

- [AMPLIMITE Right-Angle Front Metal Shell Connectors](#) (PDF, English)

**Instruction Sheets:**

- None Available

**CAD Files:** (CAD Format & Compression Information)

- [2D Drawing](#) (DXF, Version V)
- [3D Model](#) (IGES, Version V)
- [3D Model](#) (STEP, Version V)

[List all Documents](#)

**Additional Information:**

- [Product Line Information](#)

**Related Products:**

- [Tooling](#)
- [Mating Products \(4\)](#)

**Product Features (Please use the Product Drawing for all design activity)**

**Product Type Features:**

- PCB Mounting Orientation = Right Angle
- Product Series = HD 20
- Mating Connector Lock = With
- Mating Connector Lock Type = Threaded Insert, 4-40 UNC
- PCB Mount Retention = With
- PCB Mount Retention Type = Mounting Hole(s)
- Shell Type = Front Metal Shell
- Shell Size = 4
- Footprint (mm [in]) = 8.08 [.318]
- Grounding Indents = With
- Grounding Straps = With
- PCB Mount Style = Through Hole
- Color Code = None
- Sealed = No
- Profile = Standard
- Post Size (mm [in]) = 0.66 [.026]
- Mounting Hole Diameter (mm [in]) = 3.18 [.125]
- Eyelet Material = Brass

**Mechanical Attachment:**

- Panel Mount Retention = Without

**Termination Features:**

- Grounding Clips = Without
- Termination Post Length (mm [in]) = 3.18 [0.125]

**Dimensions:**

- PCB Thickness, Recommended (in [mm]) = 0.003 [0.076]

**Body Features:**

- Shell Material = Steel
- Shell Plating = Tin
- Threaded Insert Material = Zinc
- Threaded Insert Plating = Clear Chromate
- Eyelet Plating = Tin

**Contact Features:**

- Contact Plating, Mating Area, Material = Gold (30), Gold Flash over Palladium Nickel
- Solder Tail Contact Plating = Tin-Lead over Nickel
- Contact Shape = Round
- Contact Base Material = Brass

**Housing Features:**

- Connector Style = Plug
- UL Flammability Rating = UL 94V-0
- Housing Material = Thermoplastic - GF

**Configuration Features:**

- Number of Positions = 37

**Industry Standards:**

- RoHS/ELV Compliance = Not ELV/RoHS compliant
- Lead Free Solder Processes = Wave solder capable to 260°C, Wave solder capable to 240°C, Wave solder capable to 265°C

**Other:**

- Brand = AMP

• PCB thickness, recommended (in [mm]) = 0.095 [2.36]

• Comment = Plugs are preloaded with size 20 DF posted pin contacts

### Corporate Information

- [About TE](#)
- [Investors](#)
- [News Room](#)
- [Supplier Portal](#)
- [Careers](#)
- [Terms & Conditions](#)
- [Privacy Policy](#)

### Quick Links

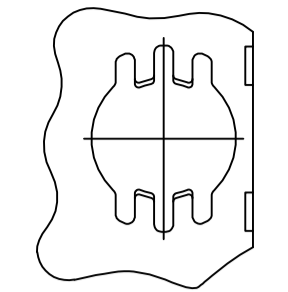
- [Distributor Inventory](#)
- [Product Cross Reference](#)
- [Documents & Drawings](#)
- [Product Compliance Support Center](#)
- [Site Map](#)

### Customer Support

- [Email or Chat With Us](#)
- [Find a Phone Number](#)
- [Knowledge Base](#)
- [Manage Your Account](#)

### Keep Me Informed

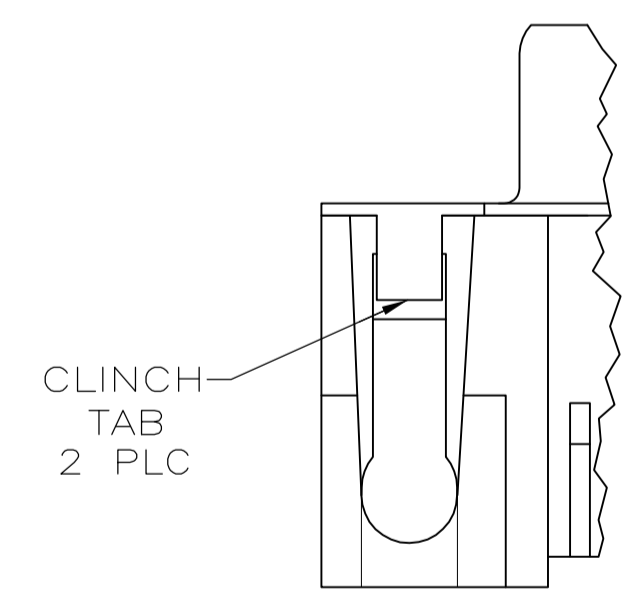
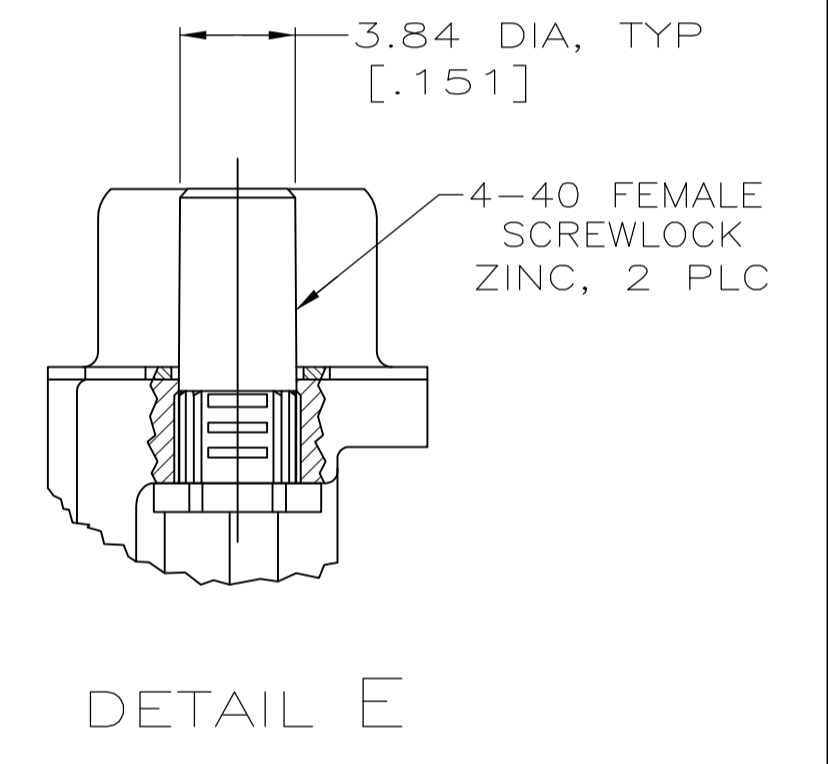
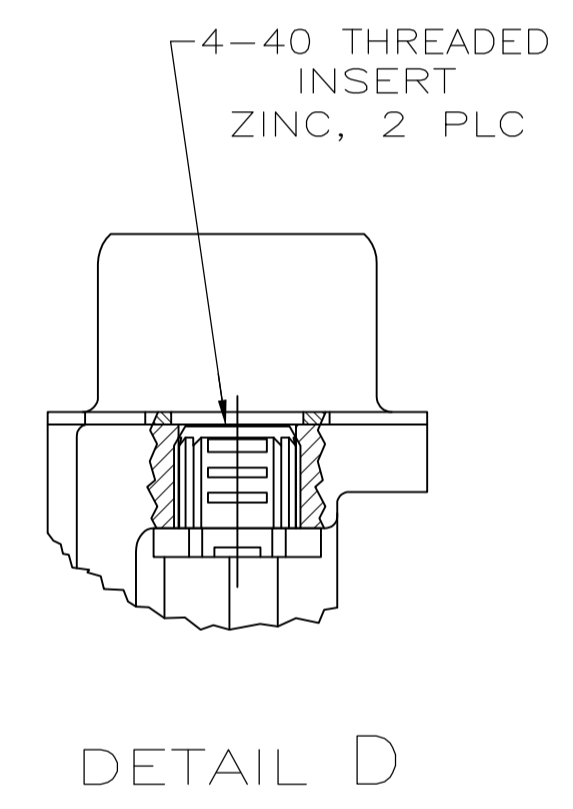
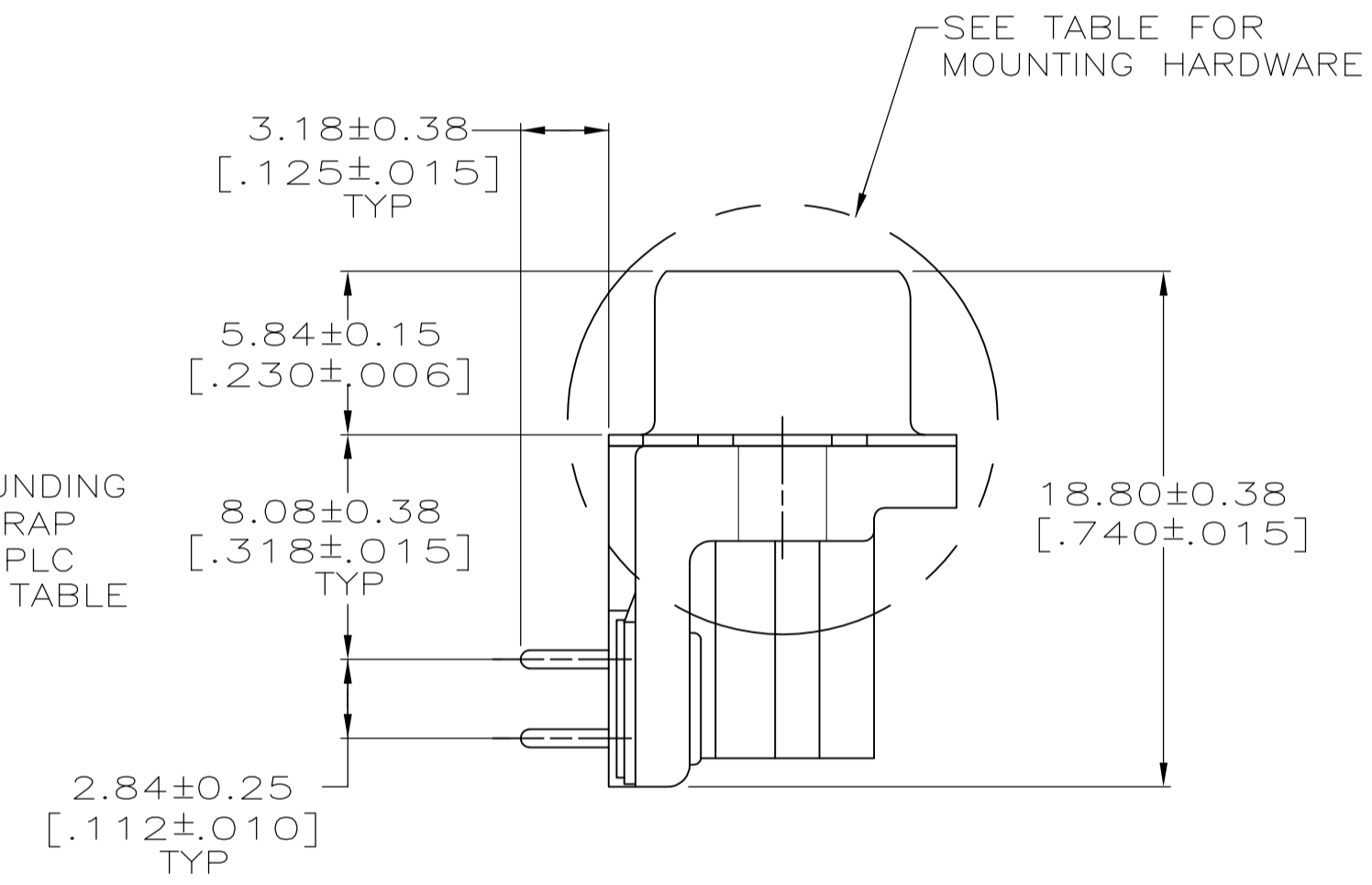
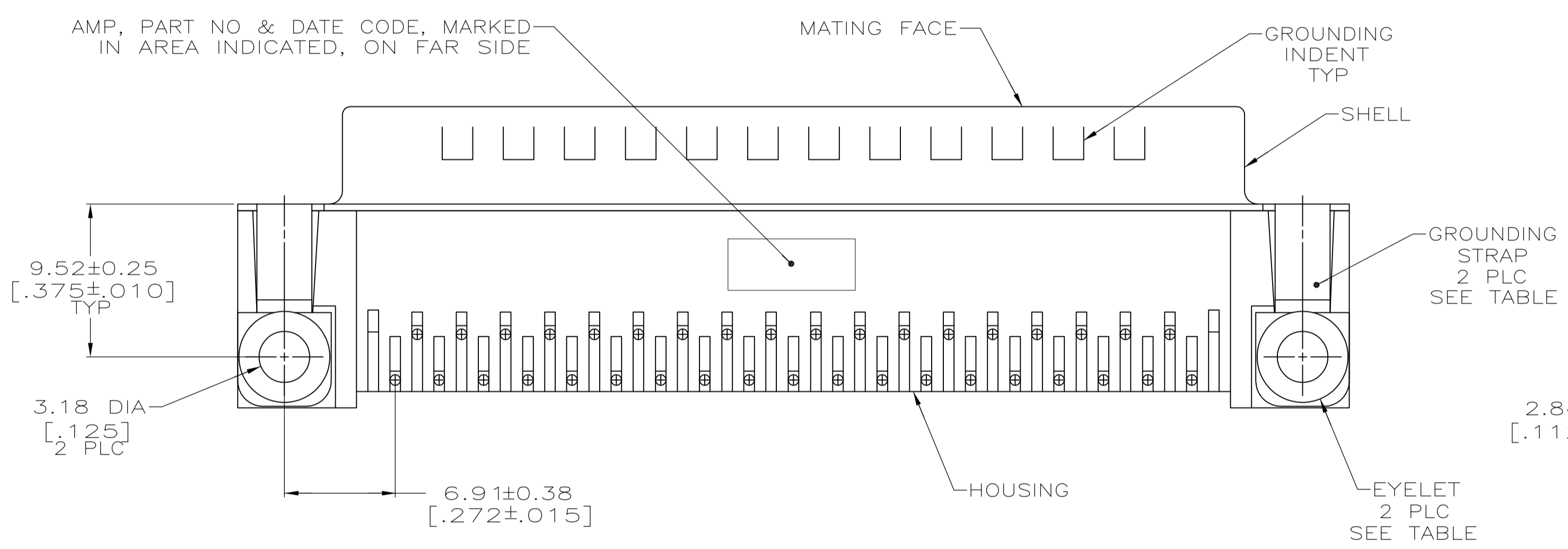
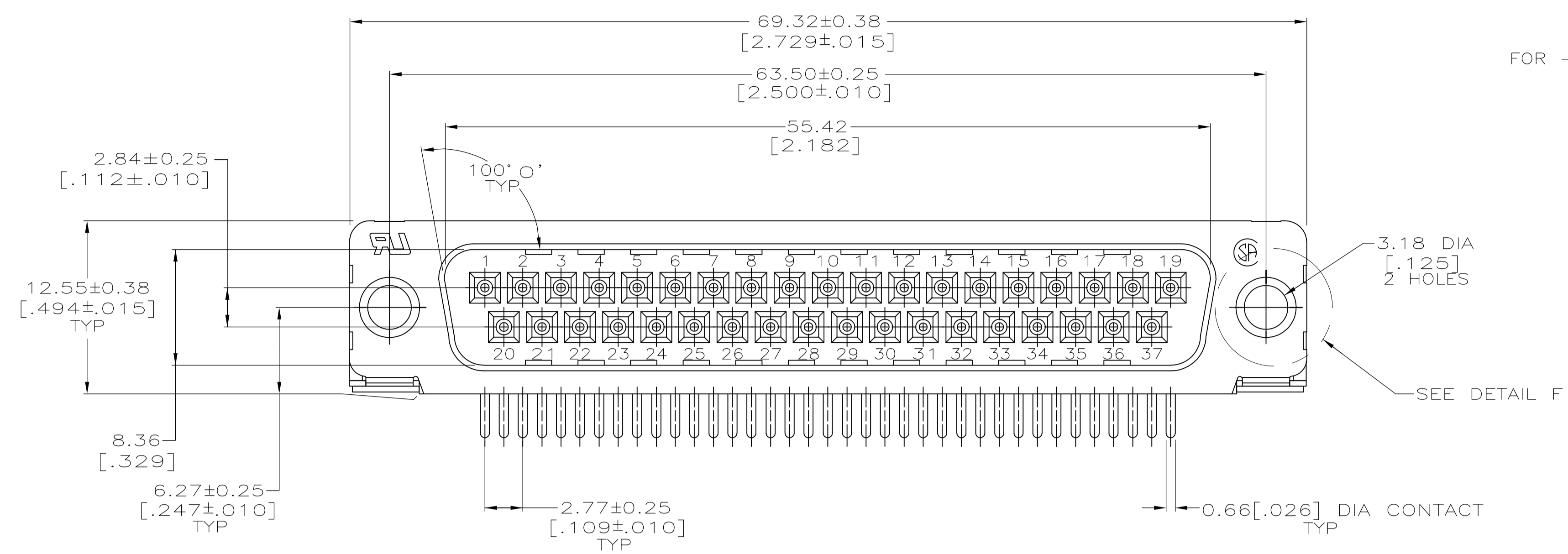




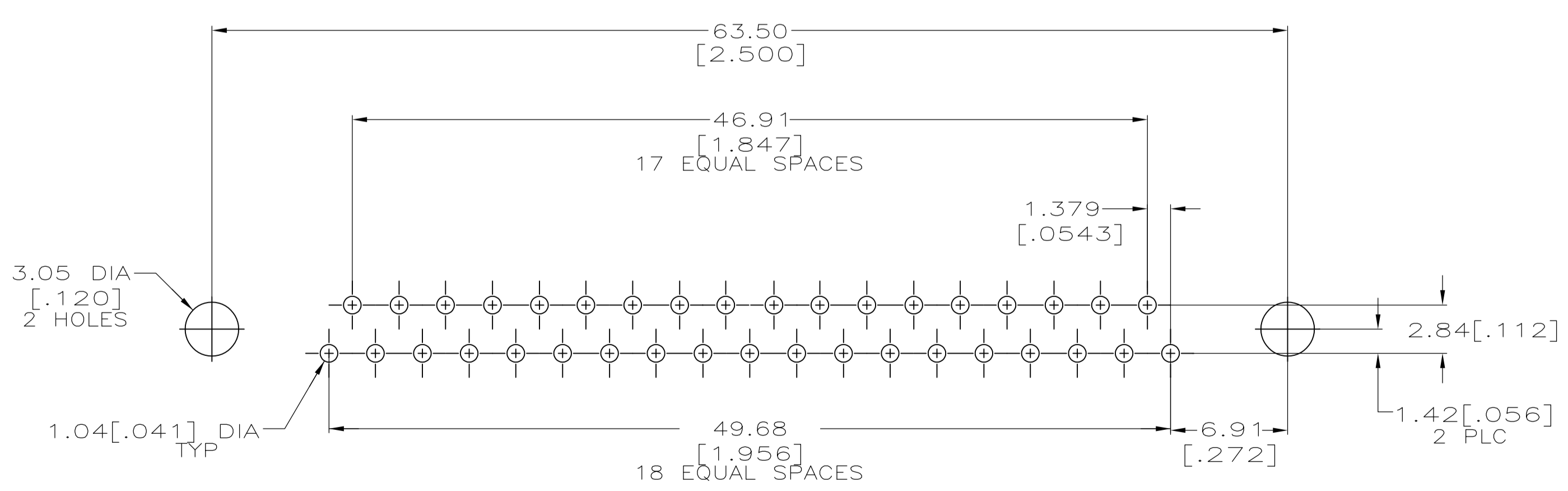
FOR -5, -6, -11 AND -12 ONLY

DETAIL F  
2 PLC

- ① HOUSING: BLACK NYLON OR POLYESTER, FLAME RETARDANT, UL 94V-0 RATED, GLASS FILLED.  
CONTACTS: BRASS.  
SHELLS: CARBON STEEL.  
EYELETS: BRASS.
- ② SHELLS: 2.54μm[.000100] MIN TIN OVER 1.27μm[.000050] MIN COPPER.  
EYELETS: 5.08μm[.000200] MIN TIN OVER COPPER FLASH.  
CONTACTS: SEE TABLE.  
SCREWLOCK AND INSERT: CLEAR CHROMATE.
- ③ GOLD FLASH ON THE MATING SURFACES, 2.54μm[.000100] MIN TIN OR TIN-LEAD PLATE ON THE SOLDER END, 1.27μm[.000050] MIN NICKEL UNDERPLATE ON THE ENTIRE CONTACT.
- ④ 0.76μm[.000030] MIN GOLD PLATE ON THE MATING SURFACES, 2.54μm[.000100] MIN TIN OR TIN-LEAD PLATE ON THE SOLDER END, 1.27μm[.000050] MIN NICKEL UNDERPLATE ON THE ENTIRE CONTACT  
-OR-  
GOLD FLASH OVER PALLADIUM-NICKEL PLATE, 0.76μm[.000030] MIN TOTAL ON THE MATING SURFACES, 2.54μm[.000100] MIN TIN OR TIN-LEAD PLATE ON THE SOLDER END, 1.27μm[.000050] MIN NICKEL UNDERPLATE ON THE ENTIRE CONTACT.
- ⑤ OBSOLETE PART NUMBER.
- ⑥ SUPERSEDED BY 747252-4.
- ⑦ SUPERSEDED BY 747252-6.
- ⑧ SUPERSEDED BY 747843-6.



DETAIL B



RECOMMENDED P.C. BOARD MOUNTING DIMENSIONS

NO SEE DETAIL B	NO	SEE DETAIL E	④	⑧	1-747252-2		
		SEE DETAIL D	④	⑧	1-747252-1		
		-	④	⑧	1-747252-0		
YES	YES	-	④	⑧	747252-9		
		SEE DETAIL E	④	⑧	747252-8		
		SEE DETAIL D	④	⑧	747252-7		
		-	④	⑧	747252-6		
		-	④	⑧	747252-5		
GROUNDING STRAPS	EYELETS	MOUNTING HARDWARE	CONTACT FINISH	PART NUMBER	④	⑧	747252-4
					④	⑧	747252-3
					④	⑧	747252-2
			④	⑧	747252-1		

THIS DRAWING IS A CONTROLLED DOCUMENT. DIMENSIONING AND TOLERANCING PER ASME Y14.5M-2009.

APPROVED: W.G. LENKER 07-NOV-89	DATE: 05-FEB-90	NAME: R. STONE
APPROVED: M.D. GALLOWAY 06-FEB-90	DATE: 06-FEB-90	NAME: M.D. GALLOWAY

PRODUCT SPEC: 108-40025  
APPLICATION SPEC: 114-40010

SCALE: 4:1 SHEET 1 OF 1 REV U

STE TE Connectivity

PLUG ASSEMBLY, SIZE 4, 37 POSITION, RIGHT ANGLE, FRONT METAL SHELL, .318 SERIES, AMPLIMITE® HD-20