

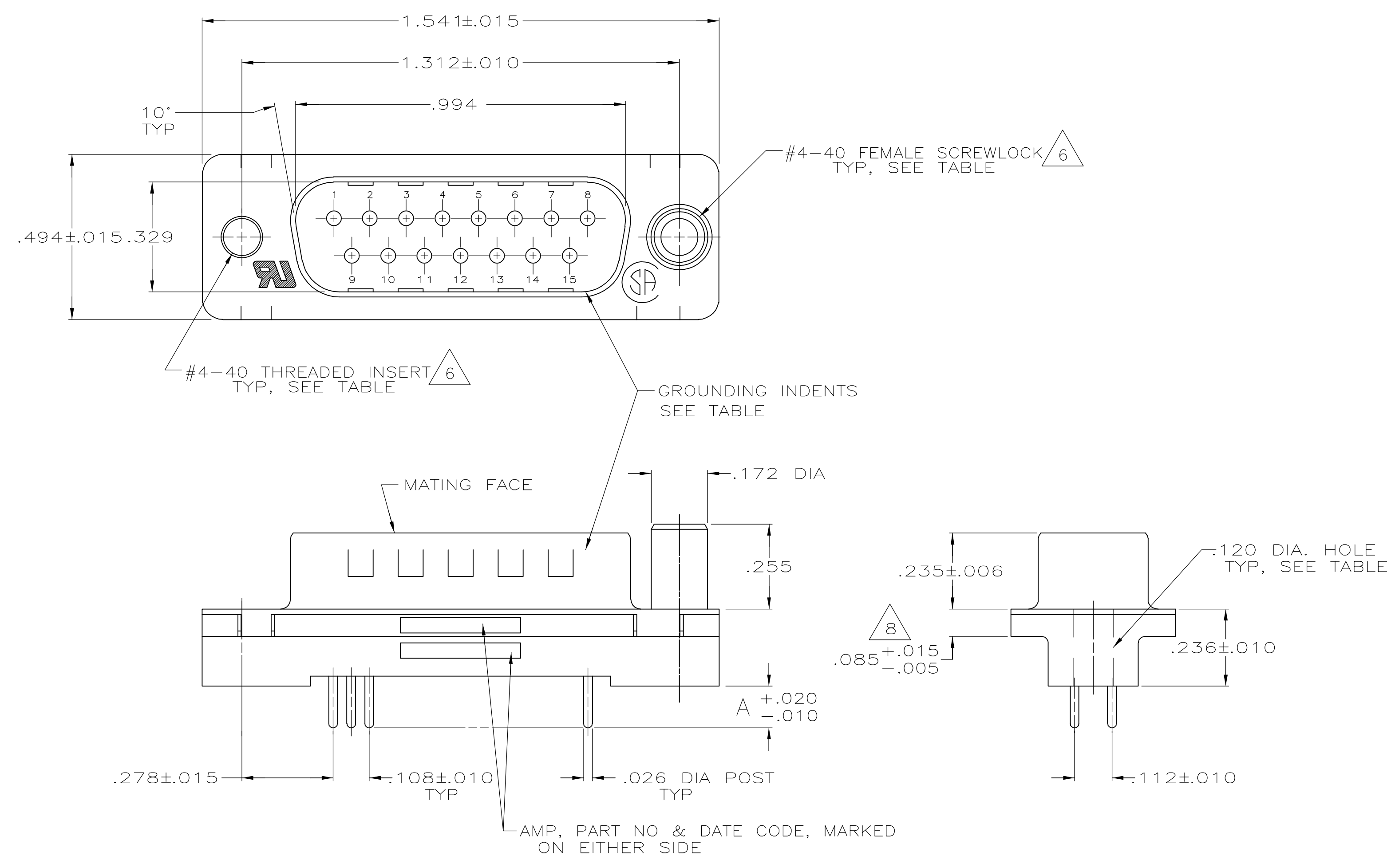
Distributed by:

JAMECO[®]
ELECTRONICS

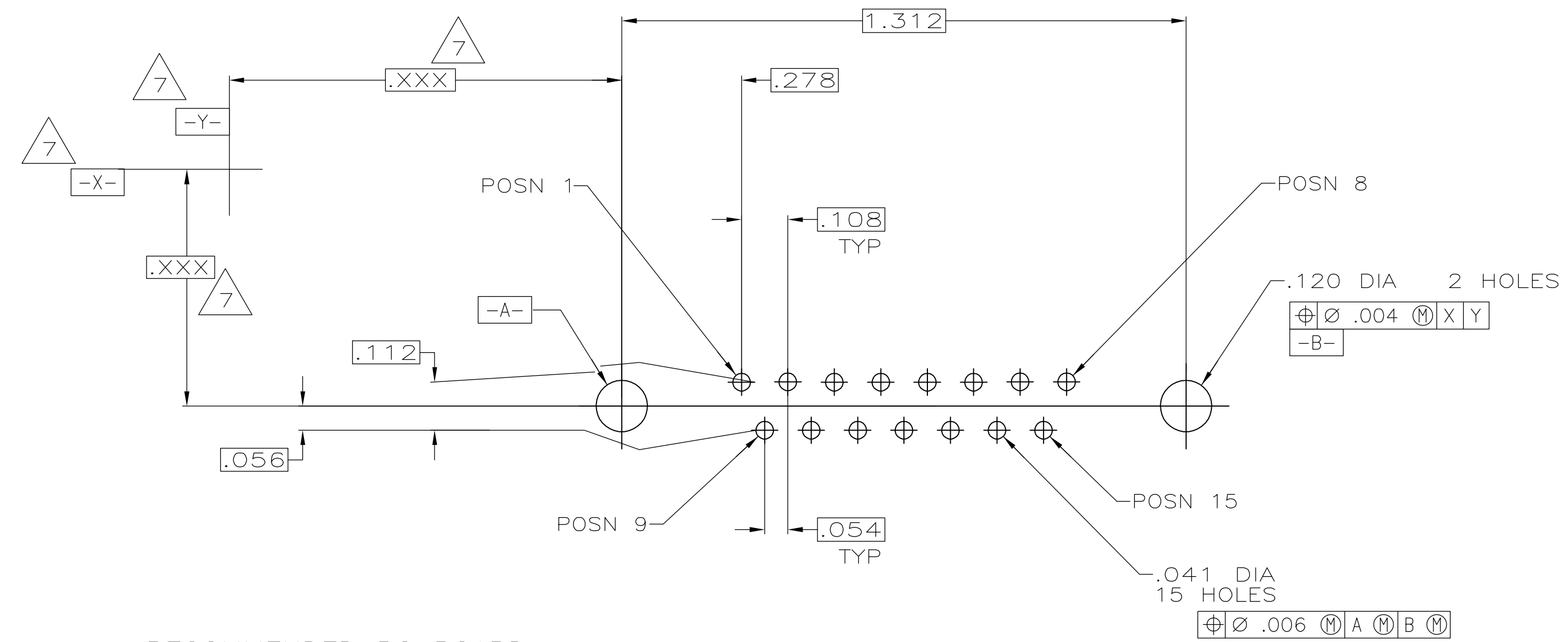
www.Jameco.com ♦ 1-800-831-4242

The content and copyrights of the attached
material are the property of its owner.

Jameco Part Number 1933970



- ① CONNECTOR MATES WITH ANY 9 POS. RECEPTACLE IN AMPLIMITE SERIES & COMPLIES WITH AMP SPEC. 108-40025 WHERE APPLICABLE.
- ② HOUSING: FLAME RETARDANT 94V-0 RATED THERMOPLASTIC, BLACK
SHELLS: STEEL
CONTACTS: BRASS
INSERTS: BRASS
SCREWLOCKS: ZINC
- ③ SHELLS: .000200 MIN TIN-LEAD OVER .000100 MIN COPPER.
INSERTS: UNPLATED.
SCREWLOCKS: UNPLATED.
CONTACTS: SEE TABLE.
- ④ GOLD PLATED FOR A LENGTH OF .150 MIN FROM MATING END, GOLD FLASH IN MATED AREA, .000100 MIN TIN OR TIN-LEAD FOR A LENGTH OF DIMENSION A FROM OPPOSITE END, ALL OVER .000050 MIN NICKEL.
- ⑤ GOLD PLATED FOR A LENGTH OF .150 FROM MATING END, .000030 MIN GOLD IN MATED AREA, .000100 MIN TIN OR TIN-LEAD FOR A LENGTH OF DIMENSION A FROM OPPOSITE END, ALL OVER .000050 MIN NICKEL.
-OR-
GOLD FLASH OVER PALLADIUM NICKEL PLATED FOR LENGTH OF .150 FROM MATING END, .000030 MIN PALLADIUM NICKEL IN MATED AREA, .000100 MIN TIN OR TIN-LEAD FOR A LENGTH OF DIMENSION A FROM OPPOSITE END, ALL OVER .000050 MIN NICKEL.
- ⑥ INSERTS & SCREWLOCKS WILL WITHSTAND 10 IN. LBS. TORQUE AND 50 LBS. PULL OUT FORCE FROM MATING FACE SIDE.
- ⑦ DATUMS AND BASIC DIMENSIONS ESTABLISHED BY CUSTOMERS.
- ⑧ .110 MAX IN SHELL TAB CLINCH AREAS.



RECOMMENDED PC BOARD MOUNTING DIMENSIONS

	OBSOLETE	NO	W/THREADED INSERTS	⑤	.125	1-747872-9
	OBSOLETE	YES	W/FEMALE SCREWLOCKS	⑤	.250	1-747872-8
	OBSOLETE	YES	W/FEMALE SCREWLOCKS	④	.250	1-747872-7
		YES	W/FEMALE SCREWLOCKS	⑤	.170	1-747872-6
	SUPERSEDED BY 1-747872-6	YES	W/FEMALE SCREWLOCKS	④	.170	1-747872-5
	SUPERSEDED BY 1-747872-6	YES	W/FEMALE SCREWLOCKS	⑤	.125	1-747872-4
	OBSOLETE	YES	W/FEMALE SCREWLOCKS	④	.125	1-747872-3
	OBSOLETE	YES	W/THREADED INSERTS	⑤	.250	1-747872-2
	OBSOLETE	YES	W/THREADED INSERTS	④	.250	1-747872-1
	OBSOLETE	YES	W/THREADED INSERTS	⑤	.170	1-747872-0
	OBSOLETE	YES	W/THREADED INSERTS	④	.170	747872-9
		YES	W/THREADED INSERTS	⑤	.125	747872-8
	OBSOLETE	YES	W/THREADED INSERTS	④	.125	747872-7
	OBSOLETE	YES	W/.120 DIA. HOLE	⑤	.250	747872-6
	OBSOLETE	YES	W/.120 DIA. HOLE	④	.250	747872-5
		YES	W/.120 DIA. HOLE	⑤	.170	747872-4
	OBSOLETE	YES	W/.120 DIA. HOLE	④	.170	747872-3
	SUPERSEDED BY 747872-4	YES	W/.120 DIA. HOLE	⑤	.125	747872-2
	OBSOLETE	YES	W/.120 DIA. HOLE	④	.125	747872-1

GROUNDING INDENTS	REMARKS	CONTACT FINISH	DIM A	PART NUMBER

THIS DRAWING IS A CONTROLLED DOCUMENT.		DWN: S. WELDON 12-25-85	Tyco Electronics Corporation	
DIMENSIONS: INCHES		CHK: C. RICHARD 12-25-85	Harrisburg, PA 17105-3608	
TOLERANCES UNLESS OTHERWISE SPECIFIED:		APVD: R. BRANDT 12-2-85	NAME	
0 PLC	± -	PRODUCT SPEC		
1 PLC	± -	APPLICATION SPEC		
2 PLC	± -	114-40023		
3 PLC	± .005	SIZE: 114-40023		
4 PLC	± -	WEIGHT: -		
ANGLES	± z	MATERIAL: -		
FINISH		SCALE: NTS		SHEET: 1 OF 1
CUSTOMER DRAWING		REV: 1		REV: K