



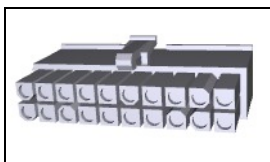
Have a Question?
Chat with a Product Information Specialist

What can we help you find?

[Products](#) [Industries](#) [Resources](#) [About TE](#) [My Account](#) [Innovation](#) [Support Center](#)

770585-1 Product Details

[Share](#) [Print](#) [Email](#)



770585-1

TE Internal Number: 770585-1

Active

[View 3D PDF](#)

.163" Centerline, 600 V, 9.5 A max.

Always EU RoHS/ELV Compliant (Statement of Compliance)

Product Highlights:

- Mini-Universal MATE-N-LOK Product Line
- Wire-to-Wire
- Applies To Wire/Cable
- Connector
- Glow Wire Rating = Standard Part - Not Glow Wire

[View all Features](#)

Quick Links

- ▶ [Pricing & Availability](#)
- ▶ [Search for Tooling](#)
- ▶ [View Mating Products \(12\)](#)
- ▶ [View Contacts \(85\)](#)
- ▶ [Product Feature Selector](#)
- ▶ [Contact Us About This Product](#)

[Add to My Part List](#) [Request Sample](#) [Find Similar Products](#) [Buy Product](#)

Documentation & Additional Information

Product Drawings:

- [PLUG, 20 CIRCUIT, MINI UNIVERSAL MATE-N-LOK\(TM\)](#) (PDF, English)

Catalog Pages/Data Sheets:

- [1-1773458-0_MINI_UNIVERSAL_MATE_N_LOK_CONNECTOR_SYST...](#) (PDF, English)
- [SOFT_SHELL_PIN_AND_SOCKET_CONNECTORS_CATALOG](#) (PDF, English)

Product Specifications:

- None Available

Application Specifications:

- [Mini-Universal MATE-N-LOK Connectors](#) (PDF, English)

Instruction Sheets:

- [Mini-Universal MATE-N-LOK Connectors](#) (PDF, English)

CAD Files: (CAD Format & Compression Information)

- [2D Drawing](#) (DXF, Version J)
- [3D Model](#) (IGES, Version J)
- [3D Model](#) (STEP, Version J)

[List all Documents](#)

Additional Information:

- [Product Line Information](#)

Related Products:

- [Tooling](#)
- [Mating Products \(12\)](#)
- [Contacts \(85\)](#)

Product Features (Please use the Product Drawing for all design activity)

Product Type Features:

- Product Line = Mini-Universal MATE-N-LOK
- Product Type = Connector
- Connector Type = Housing
- PCB Mount Retention = Without
- Sealed = No
- Strain Relief = Without
- UL File Number = E28476
- CSA File Number = LR 7189

Mechanical Attachment:

- Contact Retention = Without
- Mating Retention Type = Locking Latch
- Panel Mount Retention = Without

Electrical Characteristics:

- Operating Voltage Reference = AC/DC
- Operating Voltage (VAC) = 600
- Operating Voltage (VDC) = 600

Body Features:

- Used With = Mini-Universal MATE-N-LOK Cap Housing
- Mating Retention = With
- Row-to-Row Spacing (mm [in]) = 4.14 [0.163]
- Assembly Integration Feature = Without

Contact Features:

- Contact Type = Socket
- Contact Layout = Dual Row
- Shunts/Shorting Bars = Without

Configuration Features:

- Number of Rows = 2
- Number of Positions = 20

Industry Standards:

- [RoHS/ELV Compliance](#) = RoHS compliant, ELV compliant
- [Lead Free Solder Processes](#) = Not relevant for lead free process
- RoHS/ELV Compliance History = Always was RoHS compliant
- VDE Tested = Yes
- Agency/Standard = CSA, UL
- UL Rating = Recognized
- CSA Rating = Certified

Environmental:

- Operating Temperature (°C [°F]) = -20 - +105 [-4 - +221]

Conditions for Usage:

- Applies To = Wire/Cable
- Glow Wire Rating = Standard Part - Not Glow Wire

Operation/Application:

- Application Use = Wire-to-Wire

Packaging Features:

- Packaging Method = Package
- Packaging Quantity = 1

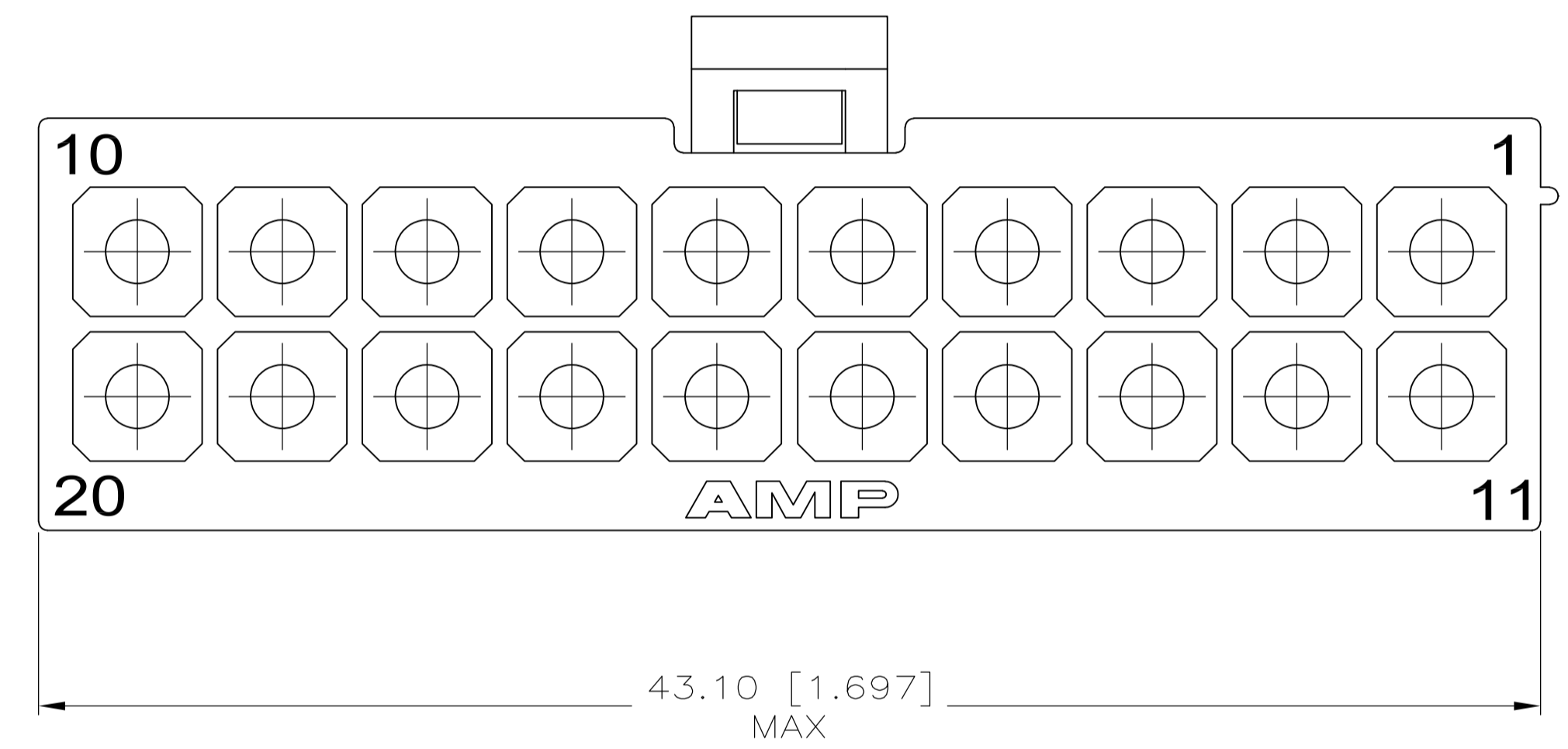
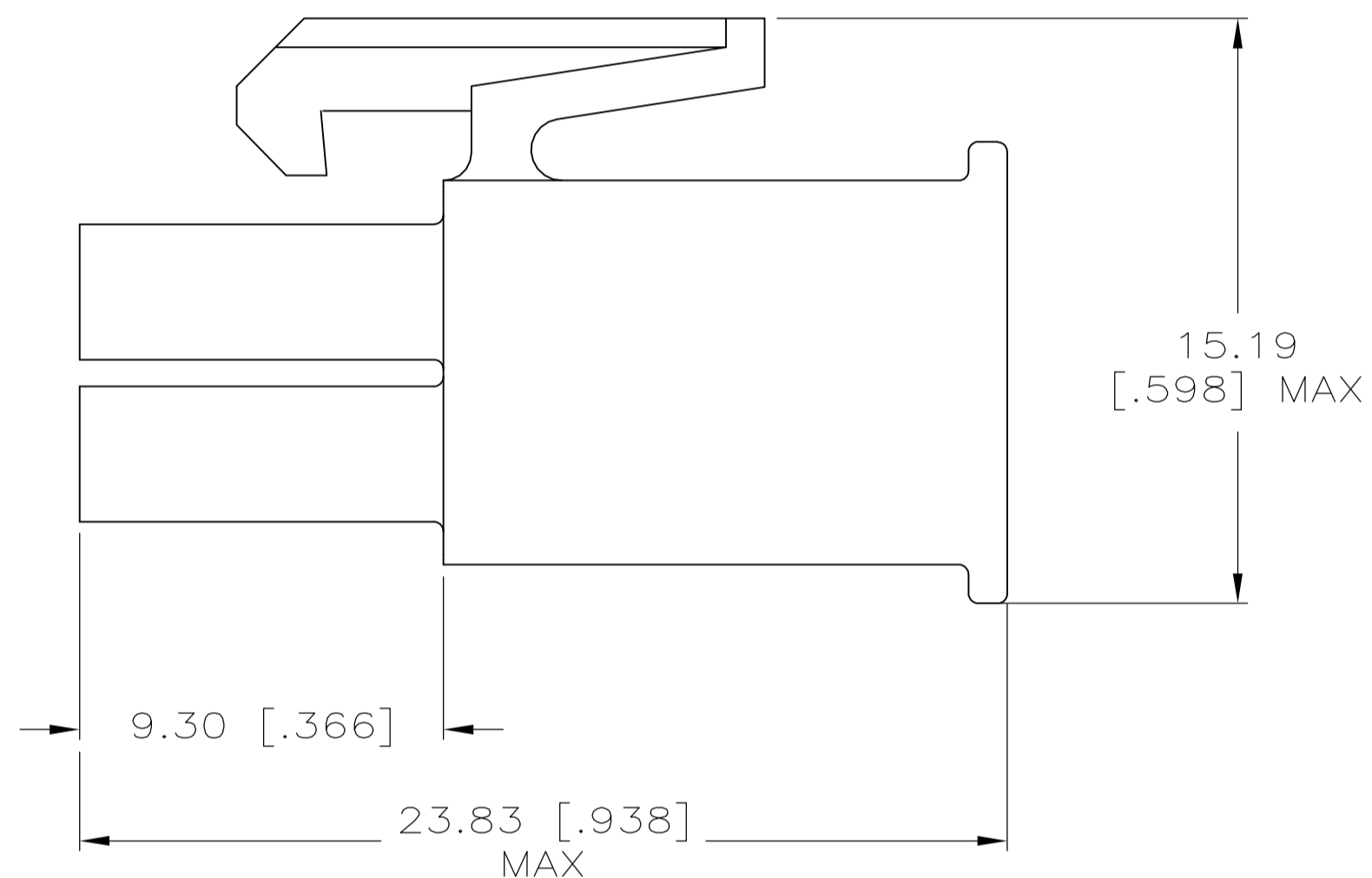
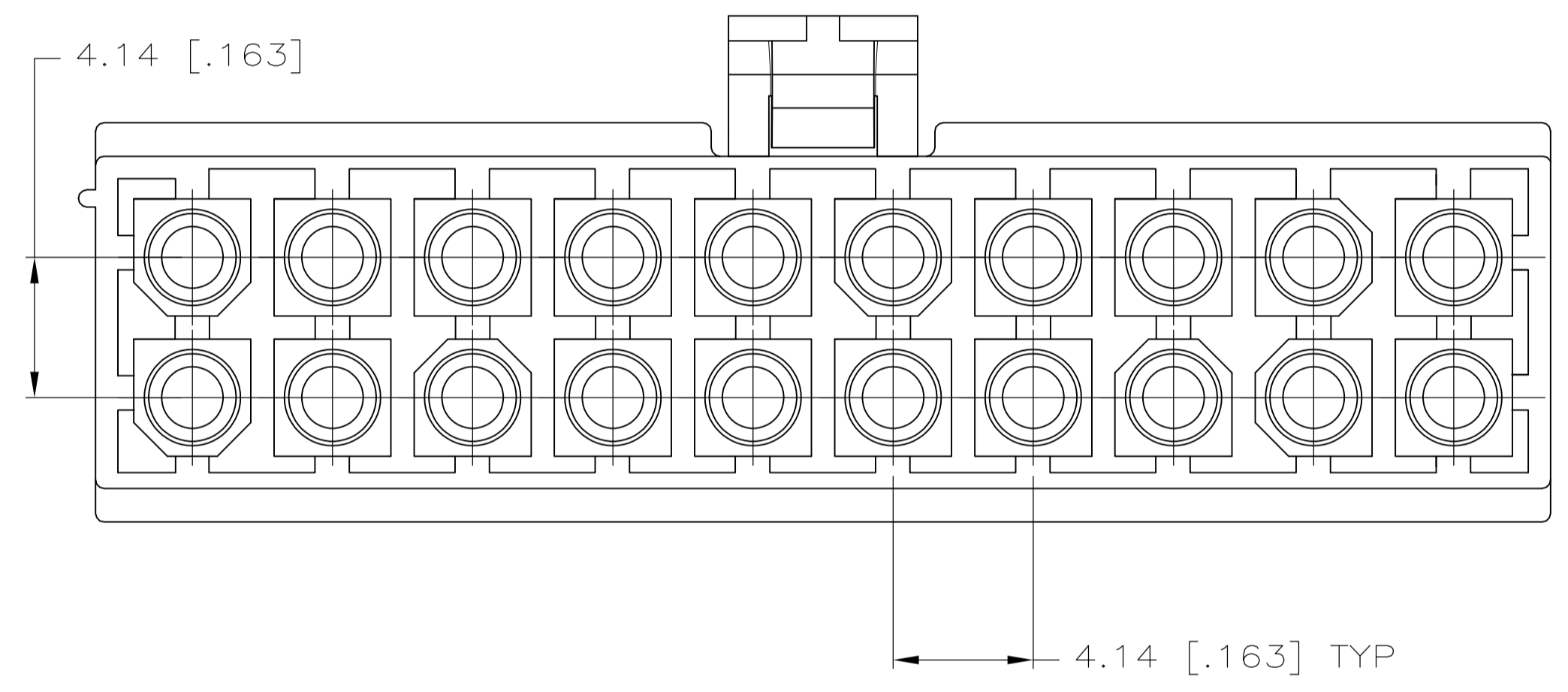
Other:

- Brand = AMP

- Multiple Contact Types = Without

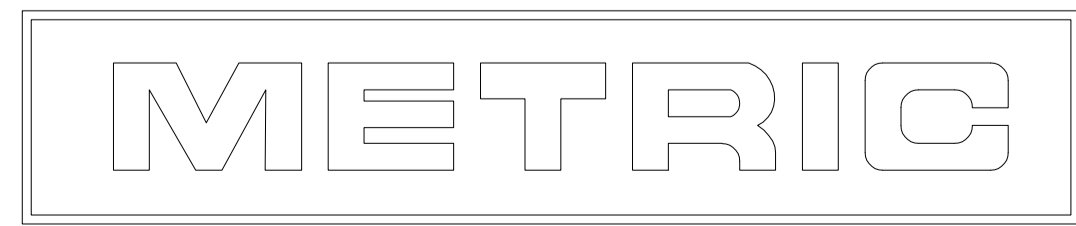
Housing Features:

- Connector Style = Plug
- Housing Material = Nylon 66/6
- Housing Color = Natural
- Mating Alignment = With
- Mating Alignment Type = Chamfered Edges
- Centerline (mm [in]) = 4.14 [0.163]
- UL Flammability Rating = UL 94V-0



1. INDIVIDUAL CORING FEATURES AROUND BASES OF SILOS MAY NOT BE PRESENT IN ALL LOCATIONS SHOWN.

770585-1
PART NUMBER



THIS DRAWING IS A CONTROLLED DOCUMENT.		DWN S. HOOVER 12-MAY-2004	TE Connectivity
DIMENSIONS: mm [INCHES]		CHK C. JONES 12-MAY-2004	
TOLERANCES UNLESS OTHERWISE SPECIFIED:		APVD C. JONES	NAME PLUG, 20 CIRCUIT, MINI UNIVERSAL MATE-N-LOK(TM)
0. PLC ±	1. PLC ±	PRODUCT SPEC	APPLICATION SPEC
2. PLC ±	3. PLC ±	SIZE	CAGE CODE
4. PLC ±	ANGLES ±	DRAWING NO	RESTRICTED TO
FINISH ±		WEIGHT	A1 00779 C=770585
MATERIAL NYLON, UL 94V-0 WHITE		CUSTOMER DRAWING	SCALE 4:1 SHEET 1 of 1 REV J1