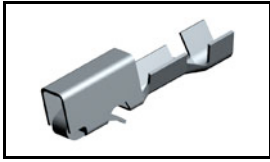


770601-2 Product Details

[Share](#) [Print](#) [Email](#)




770601-2

TE Internal Number: 770601-2

 Active

[View 3D PDF](#)

MTA, CST, CST-100 II and SL Contacts

 Always EU RoHS/ELV Compliant
(Statement of Compliance)

Product Highlights:

- CST Product Line
- Applies To Wire/Cable
- Contact Type = Receptacle
- Contact Configuration = Standard
- Contact - Rated Current = 5.52 A

[View all Features](#)

Quick Links

- ▶ [Pricing & Availability](#)
- ▶ [Search for Tooling](#)
- ▶ [Product Feature Selector](#)
- ▶ [Contact Us About This Product](#)

[Add to My Part List](#)

[Request Sample](#)

[Find Similar Products](#)

[Buy Product](#)

Documentation & Additional Information

Product Drawings:

- [RECEPTACLE, CST-100](#) (PDF, English)

Catalog Pages/Data Sheets:

- None Available

Product Specifications:

- [.100 Inch Centerline Crimp-Snap Connectors](#) (PDF, English)

Application Specifications:

- [CST-100 Connectors for Crimp Snap Terminals](#) (PDF, English)

Instruction Sheets:

- [CST-100 and CST-100 II Receptacles Visual Training ...](#) (PDF, English)
- [CST-100 Receptacles Visual Training Aid \(Contact Ins...](#) (PDF, English)
- [CST-100 and CST-100 II Receptacles Visual Training A...](#) (PDF, English)
- [CST-100 Receptacles Visual Training Aid \(Lance Position\)](#) (PDF, English)

CAD Files: (CAD Format & Compression Information)

- [2D Drawing](#) (DXF, Version N)
- [3D Model](#) (IGES, Version N)
- [3D Model](#) (STEP, Version N)

[List all Documents](#)

Additional Information:

- [Product Line Information](#)

Additional Product Images:

- [Product Photo](#)

Related Products:

- [Tooling](#)

Product Features (Please use the Product Drawing for all design activity)

Product Type Features:

- Product Line = CST
- Wire/Cable Type = Discrete Wire

Mechanical Attachment:

- Contact Retention Type = Locking Lance
- Contact Retention = With

Electrical Characteristics:

- Contact - Rated Current (A) = 5.52
- Operating Voltage Reference = AC
- Operating Voltage (VAC) = 250

Termination Features:

Industry Standards:

- [RoHS/ELV Compliance](#) = RoHS compliant, ELV compliant
- [Lead Free Solder Processes](#) = Not relevant for lead free process
- [RoHS/ELV Compliance History](#) = Always was RoHS compliant

Environmental:

- Operating Temperature (°C [°F]) = -55 - +105 [-67 - +221]

Conditions for Usage:

- Applies To = Wire/Cable

- Wire/Cable Size (mm²) = 0.13 – 0.33
- Wire/Cable Size (AWG) = 22 – 26
- [Termination Method to Wire/Cable](#) = Crimp

Body Features:

- Wire Type = Stranded

Contact Features:

- Contact Type = Receptacle
- Contact Configuration = Standard
- Contact Base Material = Phosphor Bronze
- Contact Plating, Mating Area, Material = Gold
- Contact Plating, Mating Area, Thickness (µm [µin]) = 0.76 [29.92]
- Contact Style = Box
- Underplate Material = Nickel
- Underplate Material Thickness (µm [µin]) = 1.27 [50.000]

- Accepts Wire Insulation Diameter, Range (mm [in]) = 0.89 – 1.65 [0.035 – 0.065]
- For Use With = CST-100 Housings

Packaging Features:

- Packaging Method = Reel
- Packaging Quantity = 5,500

Other:

- Brand = AMP
- Comment = Gold Flash over Palladium Nickel or Gold (30) over Nickel

Corporate Information

- [About TE](#)
- [Investors](#)
- [News Room](#)
- [Supplier Portal](#)
- [Careers](#)
- [Terms & Conditions](#)
- [Privacy Policy](#)
- [AODA Accessibility Policy](#)
- [AODA Multi-Year Accessibility Plan](#)

Quick Links

- [Distributor Inventory](#)
- [Product Cross Reference](#)
- [Documents & Drawings](#)
- [Product Compliance Support Center](#)
- [Site Map](#)

Customer Support

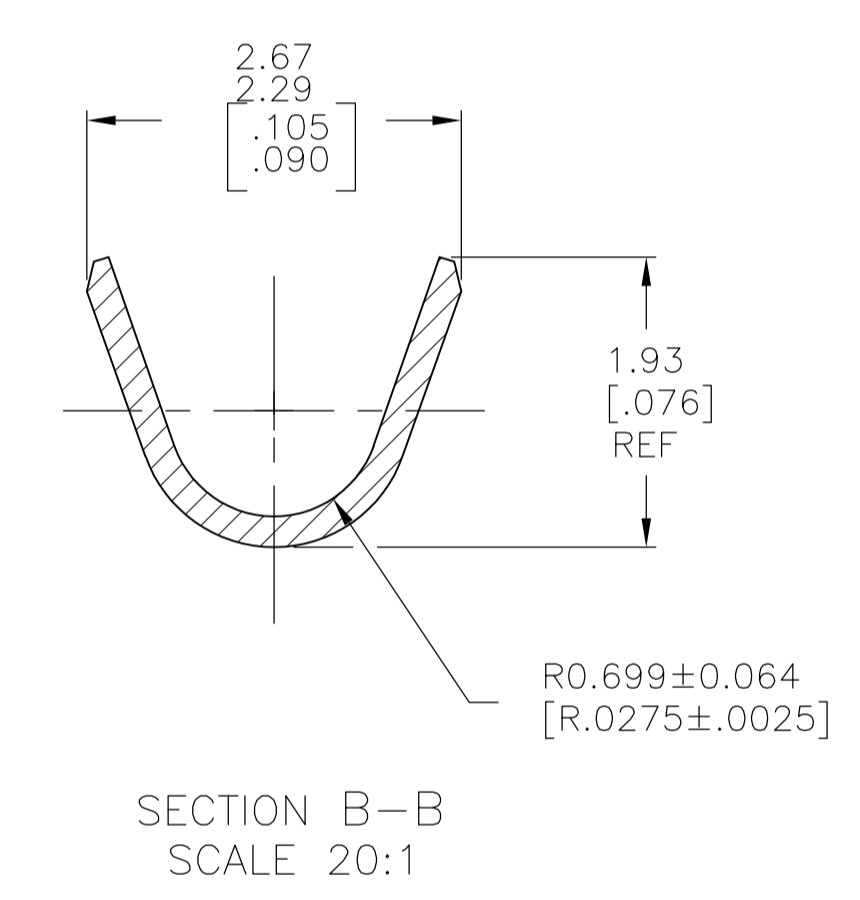
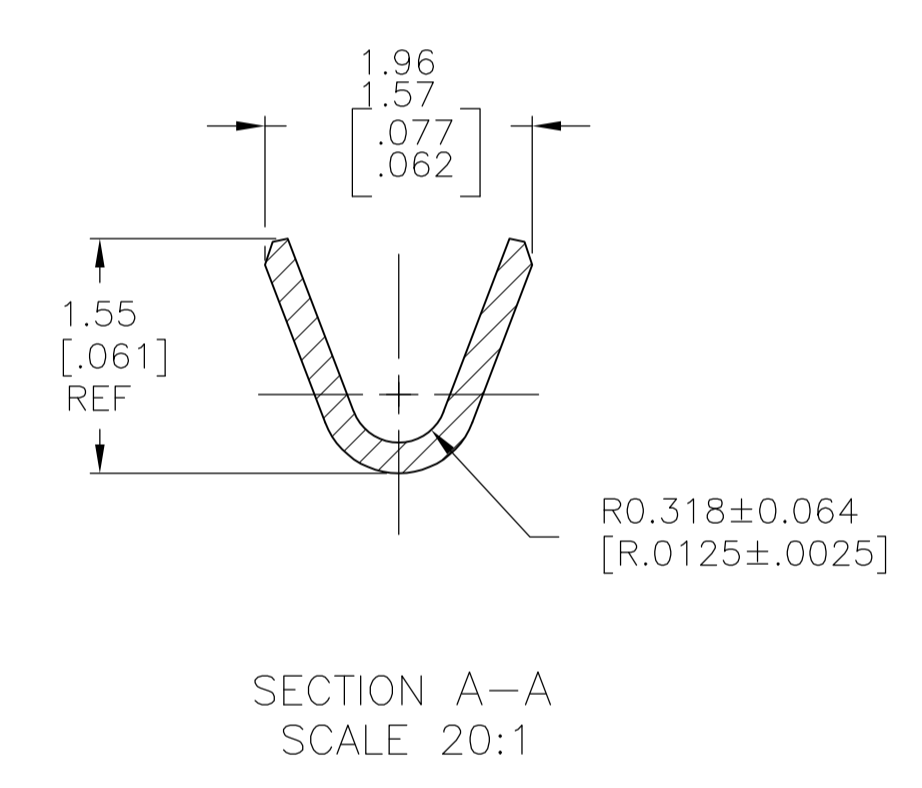
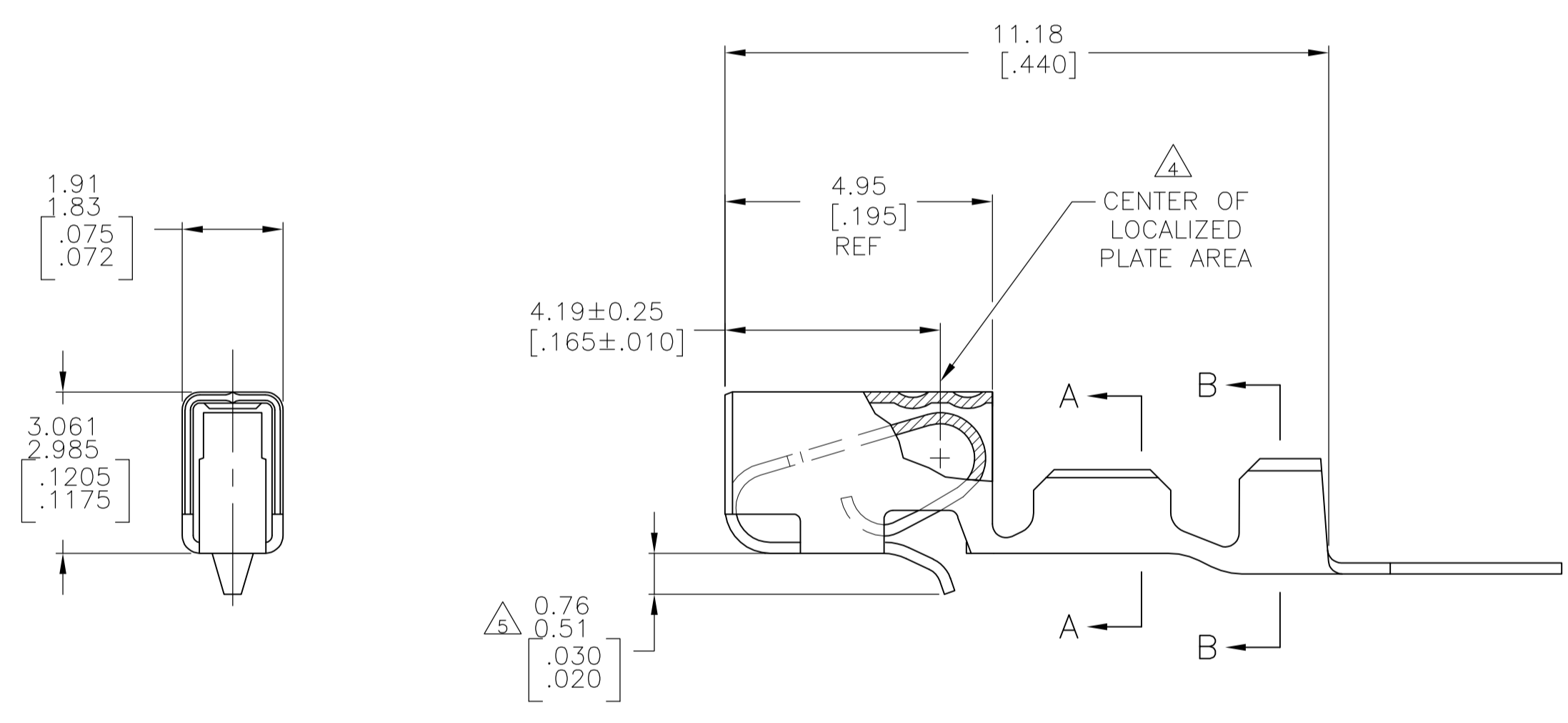
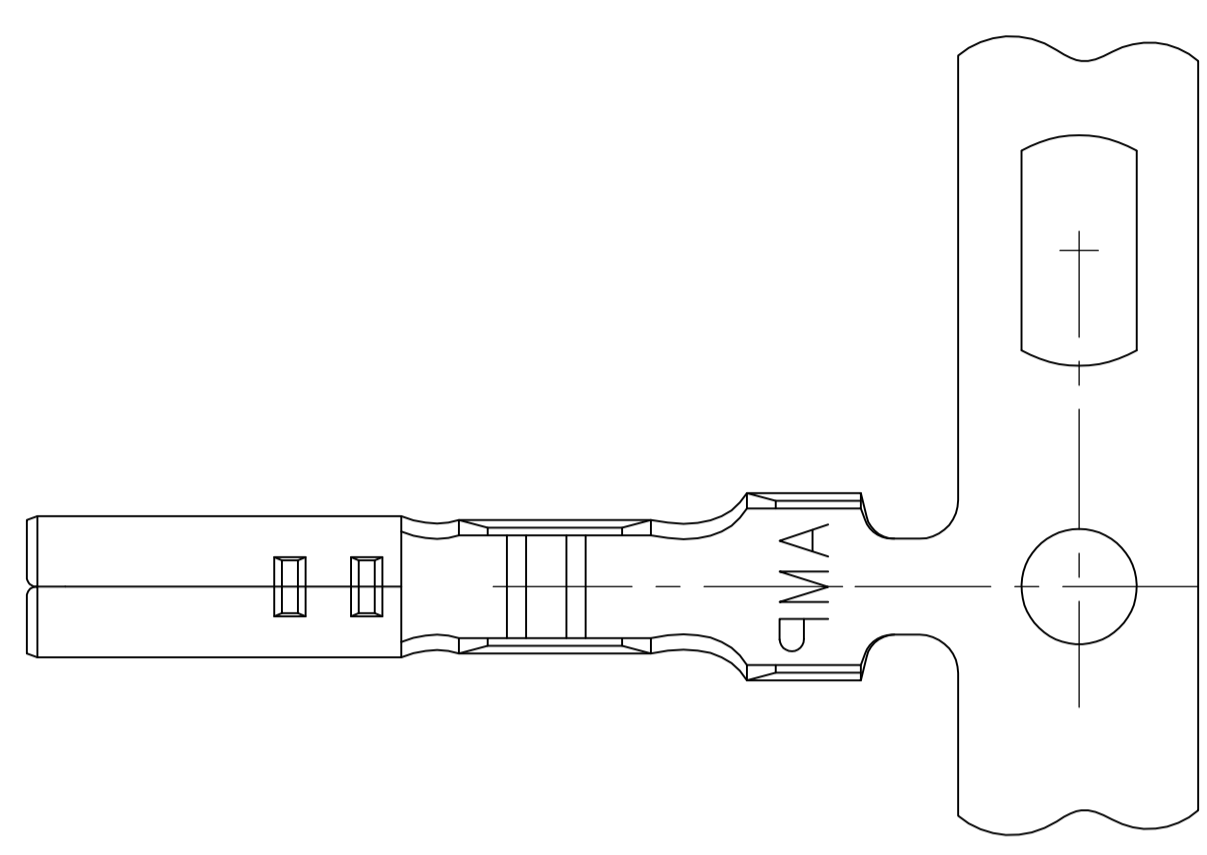
- [Email or Chat With Us](#)
- [Find a Phone Number](#)
- [Knowledge Base](#)
- [Manage Your Account](#)

Keep Me Informed



| LOC | | DIST | | REVISIONS | | | |
|-----|-------------|---------------|-----------|-----------|-----|------|--|
| GP | 00 | REV | DATE | BY | CHK | APPV | |
| N | REVISED PER | ECR-14-000447 | 16JAN2014 | NK | TM | | |

- 1 WIRE RANGE: 0.13-0.35 mm² (26-22 AWG).
- 2 INSULATION RANGE: 0.89-1.65 [.035-.065] DIA. LARGER SIZES OF 1.68-1.91 [.066-.075] DIA INSULATION REQUIRES WIRE AND CRIMP EVALUATION FROM AMP INCORPORATED.
- 3 DIMENSIONS IN BRACKETS ARE IN INCHES.
- 4 0.00076 [.000030] MIN THK GOLD STRIPES IN LOCALIZED PLATE AREA ON BEAM AND DIMPLE OVER 0.00127 [.000050] MIN THK NICKEL OVER ENTIRE CONTACT
-OR-
GOLD FLASH OVER PALLADIUM-NICKEL STRIPES, .00076 [.000030] MIN THK TOTAL IN LOCALIZED PLATE AREA ON BEAM AND DIMPLE OVER .00127 [.000050] MIN NICKEL OVER ENTIRE CONTACT.
- 5 AFTER PACKAGING AND SHIPMENT, A LANCE HEIGHT 0.46-0.71 [.018-.030] IS PERMISSABLE.
- 6 PRE-TIN MAY OR MAY NOT HAVE NICKEL UNDERPLATE.



| |
|----------------|
| 770601-2 |
| PRE-TIN FINISH |
| 770601-1 |
| PART NUMBER |

| | | | | |
|--|---------------------|--------------------------|---------------------------|--------------------|
| THIS DRAWING IS A CONTROLLED DOCUMENT. | | DWG: K. WHITAKER 17FEB05 | RECEPTACLE, CST-100 | |
| DIMENSIONS: mm [INCHES] | | CHK: D. ROSSI 17FEB05 | TE Connectivity | |
| TOLERANCES UNLESS OTHERWISE SPECIFIED: | | APPV: D. ROSSI 17FEB05 | NAME: RECEPTACLE, CST-100 | |
| 0 PLC ± - | 1 PLC ± - | PRODUCT SPEC | | |
| 2 PLC ± - | 3 PLC ± 0.13 [.005] | APPLICATION SPEC | | |
| 4 PLC ± - | ANGLES ± - | SIZE: A1 | | |
| MATERIAL: 0.198 PH BRZ | FINISH: SEE TABLE | WEIGHT: - | CAGE CODE: 00779 | DRAWING NO: 770601 |
| CUSTOMER DRAWING | | SCALE: 10:1 | SHEET: 1 OF 1 | REV: N |